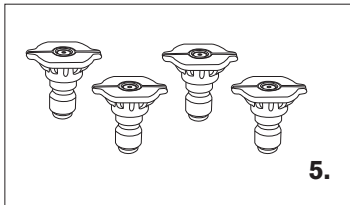
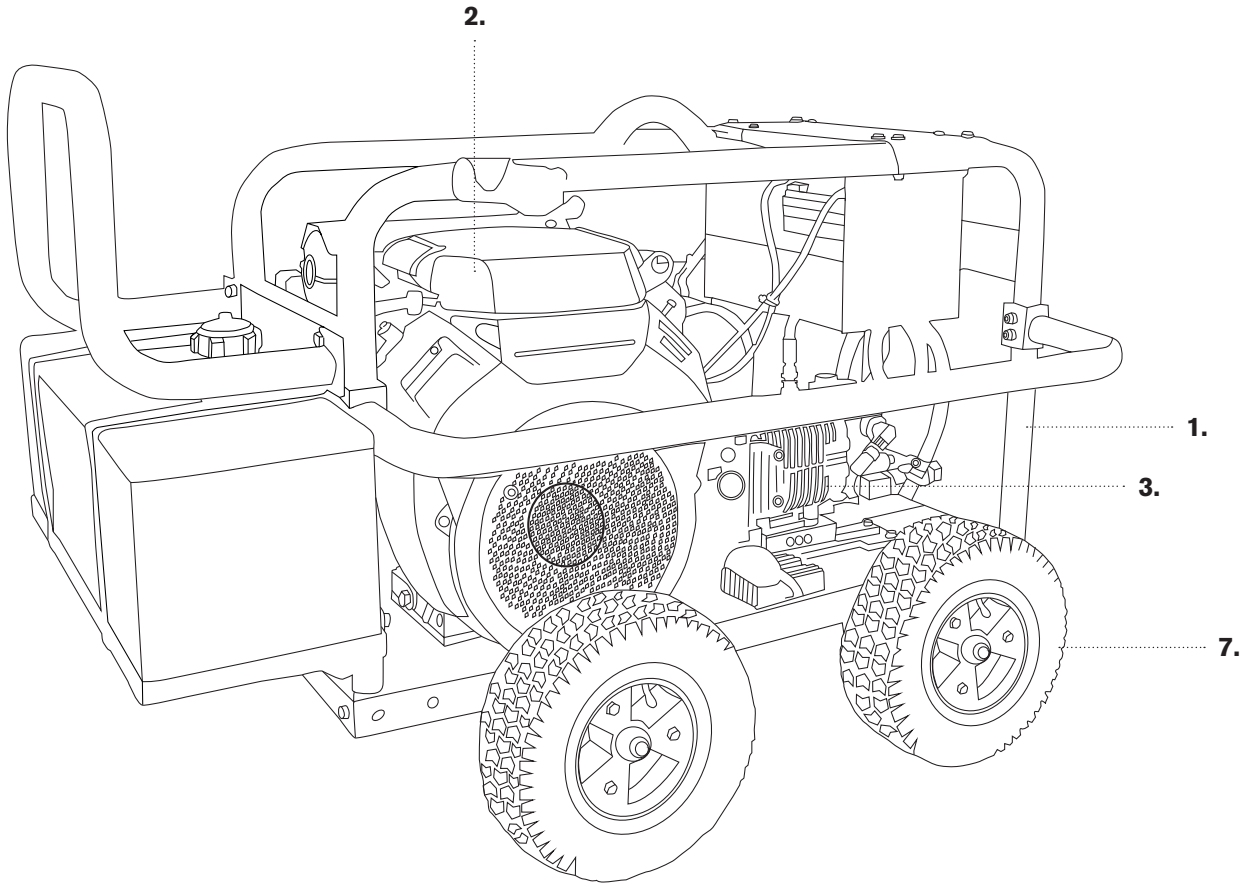


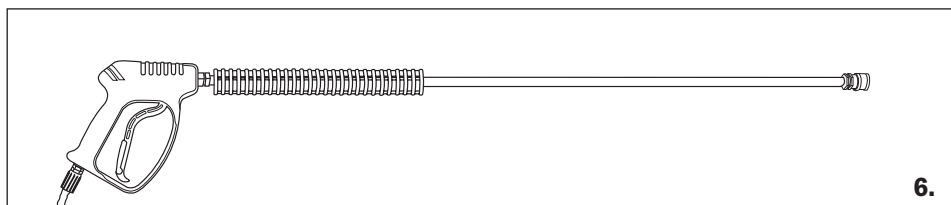
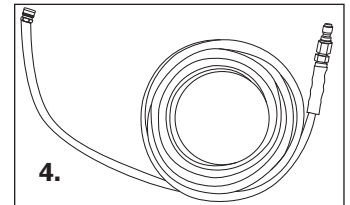


PRESSURE WASHER BREAKDOWN

PE-5024HWEBGEN



| REF # | DESCRIPTION | PART # |
|-------|------------------------|----------------|
| 1 | Roll Cage Frame | 85.600.204 |
| 2 | Engine - Honda GX690 | Not For Resale |
| 3 | Pump - General TSP1819 | 85.139.028B |
| 4 | Hose - 50' x 3/8" | 85.238.251 |
| 5 | Nozzle Set | 85.210.045 |
| 6 | Gun & Wand | 85.205.026 |
| 7 | Wheels | 85.660.020F |





PRESSURE WASHER BREAKDOWN PE-5024HWEBGEN

GENERAL PUMP A member of the Interpump Group

FEATURES

- Compact, High Pressure
- Oversized roller bearings
- Fully anodized crankcase
- Innovative new seal design extends seal life
- New plunger design improves “thermal shock” resistance
- New valve cap design improves hydrostatic performance
- Also available in “L” left-handed versions

66 Series, TSP

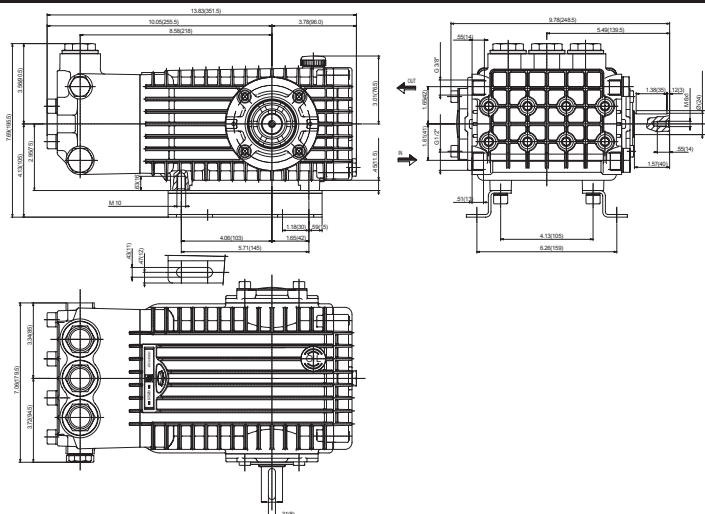
High Pressure Triplex Plunger Pump



SPECIFICATIONS

| Pump Model | TSP1621 | TSP1819 | TSP1821 |
|-----------------------------|---------------------|-----------|-----------|
| Maximum GPM | 4.3 | 5.0 | 5.5 |
| Maximum PSI | 5800 | 5000 | |
| Horsepower | 17.1 BHP | 17.1 BHP | 19.0 BHP |
| Maximum RPM | 1450 | | |
| Inlet PSI Maximum (Minimum) | 125 PSI (2.6 in Hg) | | |
| Plunger Bore (mm) | .629 (16) | .708 (18) | .708 (18) |
| Plunger Stroke (mm) | .826 (21) | .748 (19) | .826 (21) |
| Oil Capacity | 31.0 oz | | |
| Maximum Fluid Temperature | 165°F | | |
| Inlet Port Thread | 1/2" BSP-F | | |
| Discharge Port Thread | 3/8" BSP-F | | |
| Shaft Diameter (mm) | .945 (24) | | |
| Weight lb(kg) | 40.7 (18.5) | | |
| Dimensions | 13.8 x 9.8 x 7.7 in | | |

DIMENSIONS



TRIPLEX

TRIPLEX

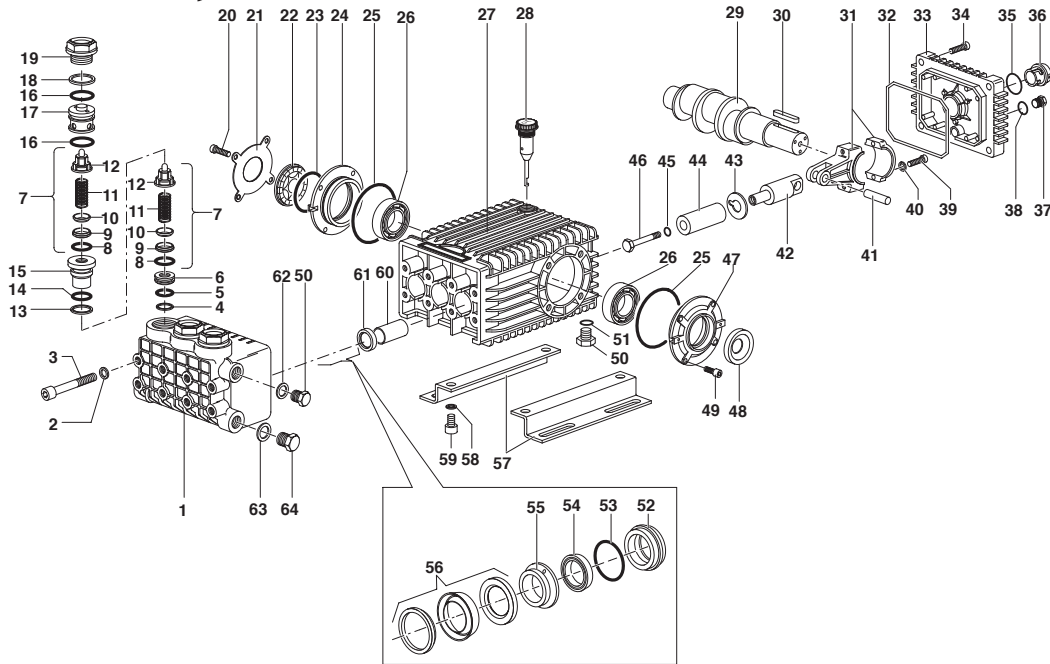




PRESSURE WASHER BREAKDOWN PE-5024HWEBGEN

66 Series, TSP

GENERAL PUMP A member of the Interpump Group



REPAIR KITS

| ITEM | PART NO. | DESCRIPTION | QTY. | ITEM | PART NO. | DESCRIPTION | QTY. | ITEM | PART NO. | DESCRIPTION | QTY. |
|------|----------|-----------------------|------|------|----------|---------------------------|------|------|----------|-----------------------------|------|
| 1. | 66121041 | Manifold 16mm | 1 | 24. | 66150122 | Side Cover | 2 | 46. | 66219566 | Plunger Bolt | 3 |
| | 66121141 | Manifold 18mm | 1 | 25. | 701147 | O-ring 67.95 x 2.62 | 2 | 47. | 66150022 | Side Cover, PTO | 1 |
| 2. | 96710400 | Washer M10 | 8 | 26. | 91838000 | Bearing | 1 | 48. | 90164800 | Seal, Shaft 30 x 55 x 7 | 1 |
| 3. | 99382000 | Headbolt M10 x 120 | 8 | 27. | 66010022 | Crankcase | 1 | 49. | 99303900 | Screw M8 x 16 | 4 |
| 4. | 90511800 | Anti-ext ring | 3 | 28. | 98210600 | Dipstick, vented | 1 | 50. | 98210000 | Plug 3/8 x 13 | 2 |
| 5. | 90359600 | O-ring 18.77 x 1.78 | 3 | 29. | 66020435 | Crankshaft TSP1621 | 1 | 51. | 90383300 | O-ring 13.95 x 2.62 | 1 |
| 6. | 66210270 | Spacer M12 | 3 | | 66020035 | Crankshaft TSP1819 | | 52. | 66080270 | Seal Retainer 16mm | 3 |
| 7. | 36712101 | Valve Assy., Complete | 6 | 30. | 91489200 | Key | 1 | | 66090370 | Seal Retainer 18mm | |
| 8. | 90384100 | O-ring 17.13 x 2.62 | 6 | 31. | 66030001 | Connecting Rod | 3 | 53. | 90361600 | O-ring 34.65 x 1.78 | 3 |
| 9. | 36200366 | Valve Seat | 6 | 32. | 90392200 | O-ring 133.02 x 2.62 | 1 | 54. | 90263000 | LP Seal 16mm | 3 |
| 10. | 36203266 | Valve Poppet | 6 | 33. | 66160000 | Cover, Crankcase | 1 | | 90265000 | LP Seal 18mm | |
| 11. | 94737600 | Valve Spring | 6 | 34. | 99188400 | Screw M6 x 20 | 4 | 55. | 66216270 | Intermediate Ring 16mm | 3 |
| 12. | 36202551 | Valve Guide | 6 | 35. | 90405100 | O-ring 26.58 x 3.53 | 1 | | 99216370 | Intermediate Ring 18mm | |
| 13. | 90511500 | Anti-ext ring | 3 | 36. | 63210051 | Sightglass, Bayonet style | 1 | 56. | 90263200 | HP Seal 16mm | 3 |
| 14. | 90384300 | O-ring 17.86 x 2.62 | 3 | 37. | 98204100 | Plug, G1/4" x 9 | 1 | | 90265400 | HP Seal 18mm | |
| 15. | 66210166 | Bushing | 3 | 38. | 90358500 | O-ring 10.82 x 1.78 | 1 | 57. | 47200074 | Pump Rail | 2 |
| 16. | 90385700 | O-ring 23.81 x 2.62 | 6 | 39. | 99309900 | Screw M8 x 35 | 6 | 58. | 96710600 | Washer M10 | 4 |
| 17. | 66210070 | Plug 19mm | 3 | 40. | 96701400 | Locking Washer M8 | 6 | 59. | 99364400 | Screw M10 x 18 | 4 |
| 18. | 90516500 | Anti-ext ring | 3 | 41. | 97740500 | Wrist Pin | 3 | 60. | 90912600 | Guide Bushing | 3 |
| 19. | 66130141 | Valve Cap | 3 | 42. | 66050064 | Piston Guide | 3 | 61. | 90162500 | Seal, Pl. Rod 22 x 32 x 5.5 | 3 |
| 20. | 99306900 | Screw M8 x 25 | 4 | 43. | 96710100 | Flinger Washer | 3 | 62. | 96738000 | Gasket, Aluminum 3/8" | 1 |
| 21. | 66150274 | Cover | 1 | 44. | 66040209 | Plunger 16 x 54 | 3 | 63. | 96751400 | Gasket, Aluminum 1/2" | 1 |
| 22. | 44211801 | Spacer, Sightglass | 1 | | 66040309 | Plunger 18 x 54 | | 64. | 98217600 | Plug, G1/2" x 10 | 1 |
| 23. | 90409700 | O-ring 55.56 x 3.53 | 1 | 45. | 701013 | O-ring 10.82 x 1.78 | 3 | | | | |

REPAIR KITS

| Kit | K02 | K03 | K150 | K174 | K175 | K161 | K176 |
|-------|-----|-----|------------------|-------|----------------|-------|----------------|
| Bore | All | All | All | 16mm | | 18mm | |
| Items | 61 | 48 | 8,9,10,11,12 (7) | 54,56 | 52,53,54,55,56 | 54,56 | 52,53,54,55,56 |
| Qty | 1 | 1 | 1 | 1 | 3 | 1 | 3 |

TORQUE SPECS*

| Item | N-M | Ft-lbs |
|------|-----|--------|
| 3 | 45 | 33.2 |
| 19 | 130 | 95.9 |
| 20 | 20 | 14.8 |
| 34 | 10 | 7.4 |
| 37 | 20 | 14.8 |
| 39 | 20 | 14.8 |
| 46** | 20 | 14.8 |
| 49 | 20 | 14.8 |
| 50 | 40 | 29.5 |
| 59 | 40 | 29.5 |

*Decrease torque by 20% if threads are lubricated.

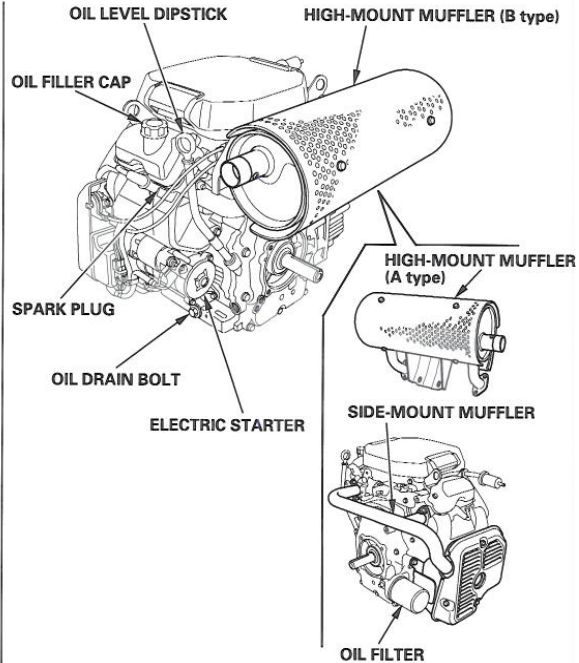
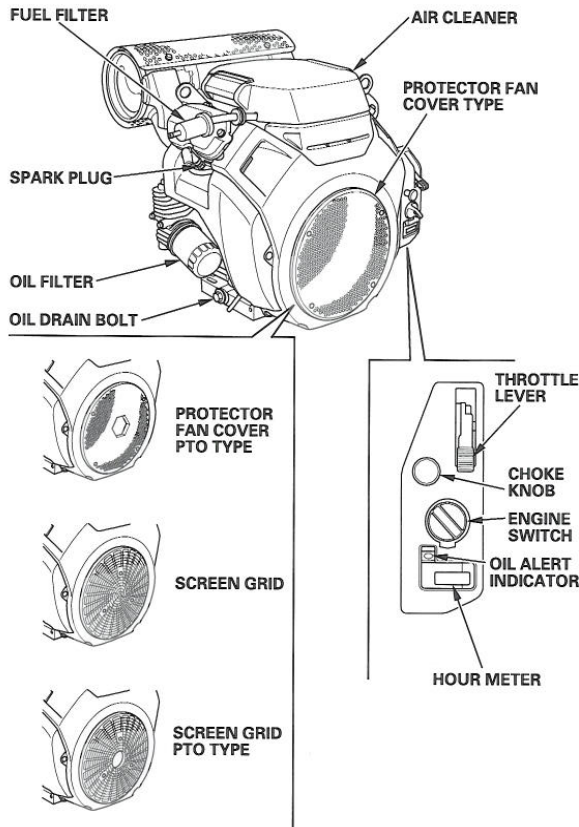
** Use Loc-tite 542





PRESSURE WASHER BREAKDOWN PE-5024HWEBGEN

COMPONENT & CONTROL LOCATION



FEATURES

Oil Alert® System (applicable types)

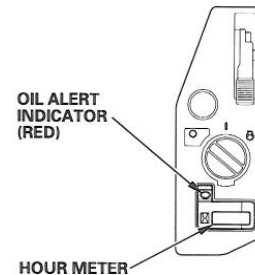
"Oil Alert is a registered trademark in the United States"

The Oil Alert system is designed to prevent engine damage caused by an insufficient amount of oil in the crankcase. Before the oil level in the crankcase can fall below a safe limit, the Oil Alert indicator (red) comes on and the Oil Alert system will automatically stop the engine (the engine switch will remain in the ON position).

If the engine stops and will not restart, check the engine oil level (see page 8) before troubleshooting in other areas.

Hour Meter

After starting the engine, the elapsed time of the engine in use will be count. It will not count the elapsed time of the engine operation by just turning the engine switch ON.



Fuel-cut Solenoid

The engine is equipped with a fuel-cut solenoid that allows fuel to flow to the carburetor main jet when the engine switch is in the ON or START position and stops the flow of fuel to the main jet when the engine switch is in the OFF position.

The engine must be connected to the battery to energize the fuel-cut solenoid, allowing the engine to run. If the battery is disconnected, fuel flow to the carburetor will stop.