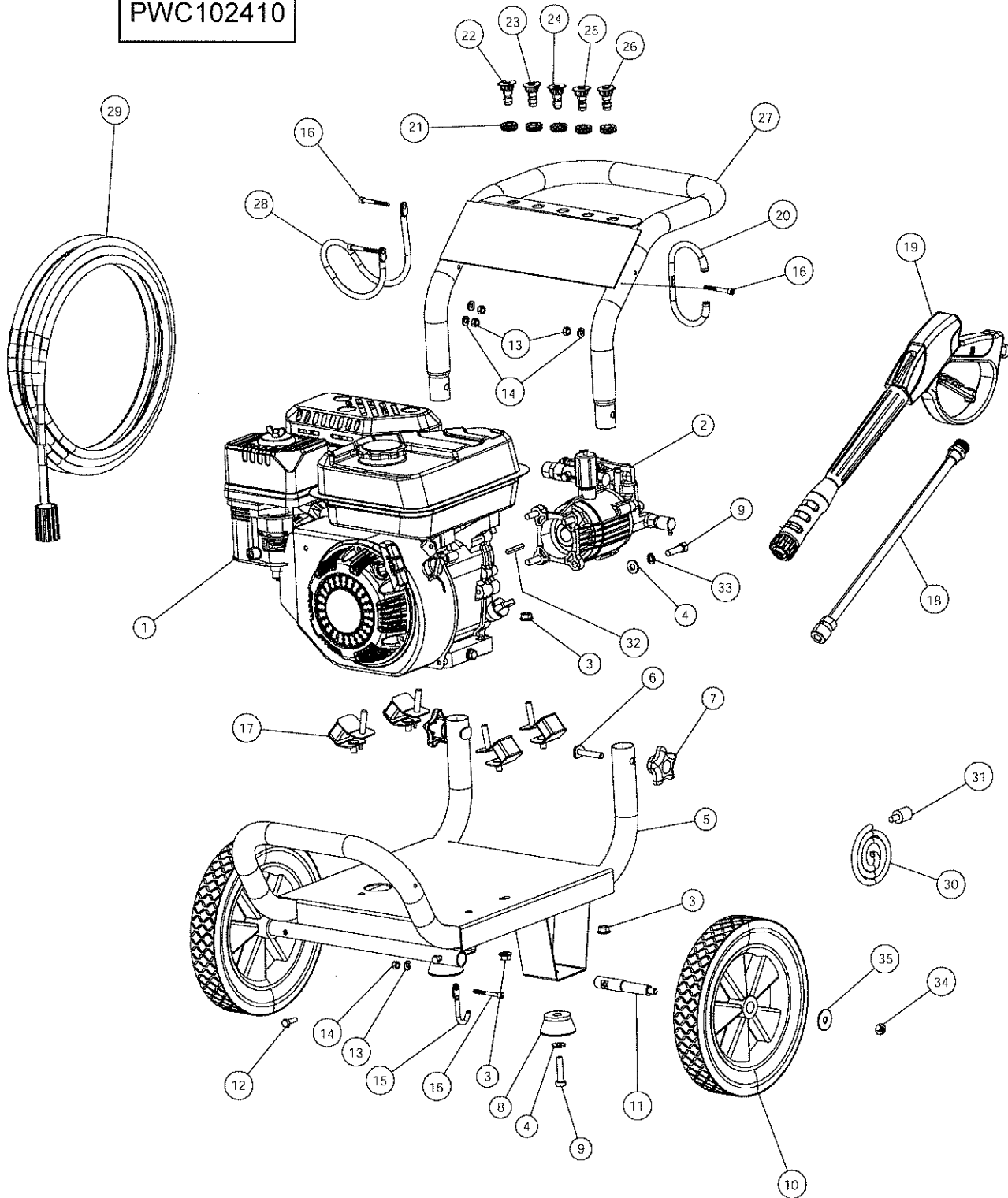


2410.01 - FLYRIVER w/ AR PUMP

PARTS DRAWING / SCHEMA DES PIÉCES / DIAGRAMA DE PIEZAS

PW0102410
PWC102410



PARTS LIST / LISTE DES PIÈCES / LISTA DE PIEZAS

| REF. NO. | PART NO. | DESCRIPTION | DESCRIPTION | DESCRIPCION | QTY |
|----------|----------|----------------------------|------------------------------------|--|-----|
| 1 | Note A | Engine | Moteur | Motor | 1 |
| 2 | 0067880 | Pump RMV2.2G24 | Pompe | Bomba | 1 |
| 3 | Note B | Flange Nut M8 | Ecrou | Tuerca | 10 |
| 4 | Note B | Washer flat M8 | Rondelle plate | Arandela plana | 6 |
| 5 | 0067881 | Frame | Cadre | Marco | 1 |
| 6 | Note B | Bolt M8 x 45 | Boulon | Perno | 2 |
| 7 | 0067533 | Knob | Bouton | Perilla | 2 |
| 8 | 0067534 | Rubber foot | Pied | Pie | 2 |
| 9 | Note B | Bolt M8 x 25 | Boulon | Perno | 6 |
| 10 | 0067882 | Wheel | Roue | Rueda | 2 |
| 11 | 0067883 | Axle | Essieu | Eje | 2 |
| 12 | Note B | Bolt M6 x 18 | Boulon | Perno | 2 |
| 13 | Note B | Nyloc Nut M6 | Ecrou autofreiné | Tuerca de nyloc | 4 |
| 14 | Note B | Washer flat M6 | Rondelle plate | Arandela plana | 4 |
| 15 | 0067537 | Wand hook | Crochet | Gancho | 1 |
| 16 | Note B | Bolt M6 x 45 | Boulon | Perno | 4 |
| 17 | 0067538 | Isolator | Sectionneur | Aislador | 4 |
| 18 | 0067539 | Assy, wand & quick connect | Baguette et branchement rapide | Ensamblado de varilla de pulverización | 1 |
| 19 | 0067884 | Gun | Pistolet | Pistola | 1 |
| 20 | 0067541 | Wand hook | Crochet | Gancho | 1 |
| 21 | 0057705 | Grommet | Anneau | Arandela aislante | 5 |
| 22 | 0067542 | Nozzie Black | Buse Noir | Boquilla Negra | 1 |
| 23 | 0067543 | Nozzie Red | Buse Rouge | Boquilla Roja | 1 |
| 24 | 0067544 | Nozzie Yellow | Buse Jaune | Boquilla Amarilla | 1 |
| 25 | 0067545 | Nozzie White | Buse Pâle | Boquilla Blanco | 1 |
| 26 | 0067546 | Nozzie Green | Buse Vert | Boquilla Verde | 1 |
| 27 | 0067885 | Handle | Poignée | Mango | 1 |
| 28 | 0067548 | Hose hook | Crochet | Gancho | 1 |
| 29 | 0067549 | Hose | Tuyau | Manguera | 1 |
| 30 | 0057701 | Chemical Hose | Tuyau pour les produits chimiques | Manguera de sustancia quimica | 1 |
| 31 | 0057700 | Chemical Filter | Filtre pour les produits chimiques | Sustancia quimica filtro | 1 |
| 32 | 0000047 | Key SQ 3/16 x 1.75 | Touche | Tecla | 1 |
| 33 | Note B | Washer lock M8 | Rondelle serrure | Arandela mechon | 4 |
| 34 | Note B | Nyloc Nut M8 | Ecrou autofreiné | Tuerca be nyloc | 2 |
| 35 | Note B | Washer flat 22 x 8.5 | Rondelle plate | Aranela plana | 2 |

Note A: Pramac America, LLC will not provide engines as replacement parts. Engines are covered through the engine manufacturer's warranty. Consult the accompanying engine manual or contact our service department for assistance.

Note B: These are standard parts available at your local hardware store.

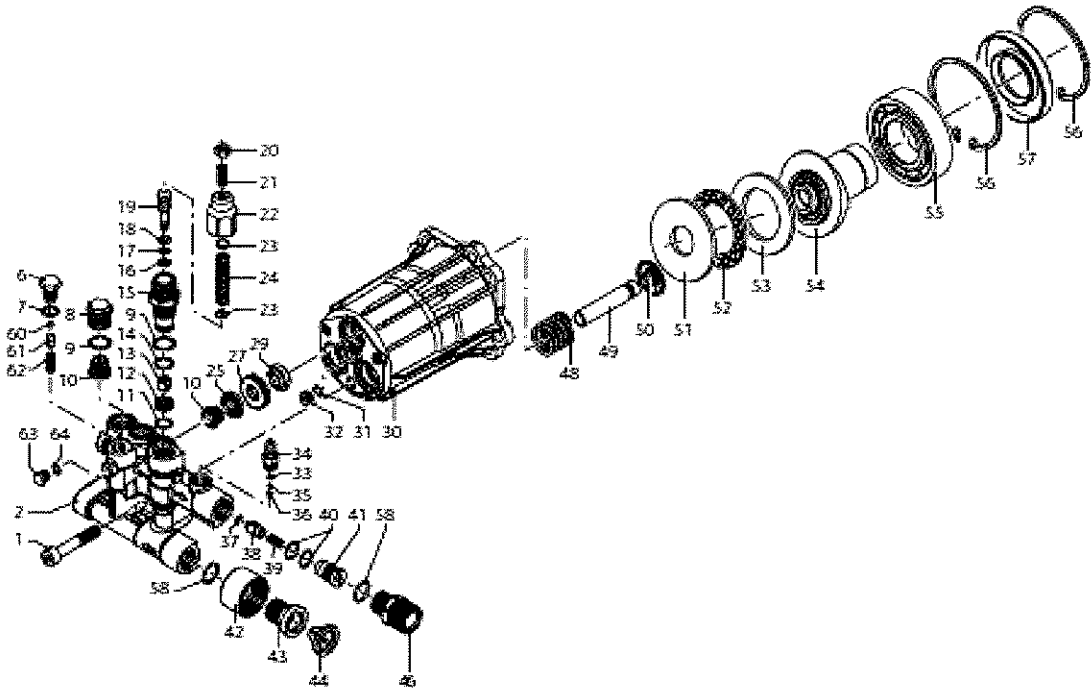
Remarque A: Pramac America, LLC ne fournit pas de moteurs dans ses pièces de rechange. Le moteur est couvert par la garantie du fabricant. Consulter le manuel du moteur inclus ou contacter notre service après-vente pour toute assistance.

Remarque B: Ces pièces sont des pièces standard disponibles dans les quincailleries.

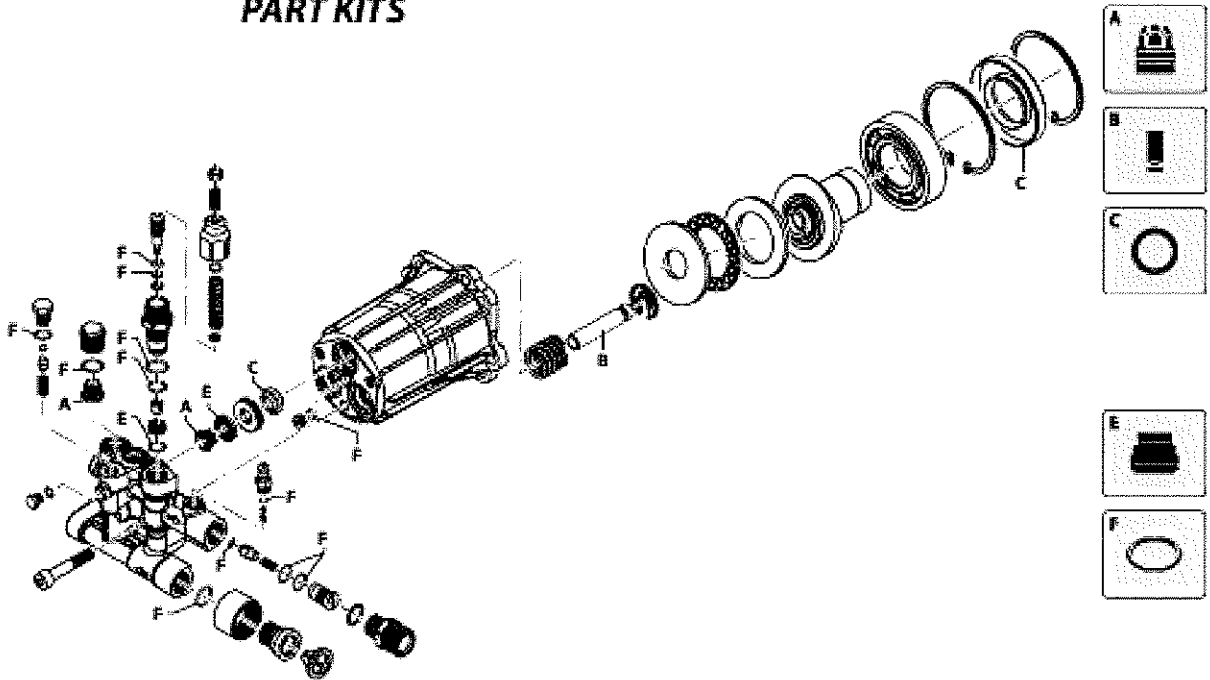
Nota A: Pramac America, LLC no proporcionará motores como piezas de repuesto. Los motores están cubiertos por medio de la garantía del fabricante del motor. Consulte el manual adjunto del motor o comuníquese con nuestro departamento de servicio para recibir asistencia al respecto.

Nota B: Estas son piezas estándar disponibles en su ferretería local.

PUMP / POMPE / BOMBA
PARTS DRAWING / SCHEMA DES PIÈCES / DIAGRAMA DE PIEZAS



PART KITS



PUMP / POMPE / BOMBA
PARTS LIST / LISTE DES PIÈCES / LISTA DE PIEZAS

| REF | PART NO. | DESCRIPTION | DESCRIPTION | DESCRIPCION | QTY |
|-----|----------|-----------------------|-----------------------|-------------------------|-----|
| | | Pump RMV2.2G24 | Pompe | Bomba | |
| A | 0067886 | Valves Kit | Jeu de Soupapes | Juego de Válvulas | |
| B | 0065010 | Pistons Kit | Jeu de Pistons | Juego de Pistóns | |
| C | 0067887 | Oil Seals Kit | Jeu de Joints l'eau | Juego de Sello del agua | |
| E | 0065011 | Water Seals Kit | Jeu de Joints l'eau | Juego de Sello del agua | |
| F | 0065013 | O-Rings Kit | Jeu de Joints torique | Juego de Anillo tórico | |
| 1 | | Screw | Vis | Tornillo | 3 |
| 2 | | Pump head | Tête de pompe | Cabeza de bomba | 1 |
| 6 | | Plug | Bouchon | Tapón | 1 |
| 7 | | O-Ring (7.66 x 1.78) | Joint torique | Anillo tórico | 1 |
| 8 | | Plug | Bouchon | Tapón | 3 |
| 9 | | O-Ring (14 x 1.78) | Joint torique | Anillo tórico | 4 |
| 10 | | Complete valve | Soupape | Válvula | 6 |
| 11 | | O-Ring (9 x 1) | Joint torique | Anillo tórico | 1 |
| 12 | | Seat | Siège | Asiento | 1 |
| 13 | | By-pass jet | Jet | Jet | 1 |
| 14 | | O-Ring (10.82 x 1.78) | Joint torique | Anillo tórico | 1 |
| 15 | | Piston guide | Guide | Gulá | 1 |
| 16 | | Ring | Segment | Anillo | 1 |
| 17 | | O-Ring (6.07 x 1.78) | Joint torique | Anillo tórico | 1 |
| 18 | | O-Ring (6.02 x 2.62) | Joint torique | Anillo tórico | 1 |
| 19 | | Piston | Piston | Pistón | 1 |
| 20 | | Nut | Écrou | Tuerca | 1 |
| 21 | | Grub screw | Vis | Tornillo | 1 |
| 22 | | Handle insert | Pièce rapportée | Inserto | 1 |
| 23 | | Plate spring | Plaque | Placa | 2 |
| 24 | | Spring | Ressort | Resorte | 1 |
| 25 | | Gasket | Joint | Empaquetadura | 3 |
| 27 | | Bushing | Bague | Buje | 3 |
| 29 | | Seal | Joint | Sello | 3 |
| 30 | | Housing | Corps | Compartimiento | 1 |
| 31 | | O-Ring (6.75 x 1.78) | Joint torique | Anillo tórico | 1 |
| 32 | | Oil plug | Bouchon | Tapón | 1 |
| 33 | | O-Ring (4.48 x 1.78) | Joint torique | Anillo tórico | 1 |
| 34 | | Hose tail | Queue | Cola | 1 |
| 35 | | Ball | Balle | Pelota | 1 |
| 36 | | Spring | Ressort | Resorte | 1 |
| 37 | | O-Ring (4 x 2.5) | Joint torique | Anillo tórico | 1 |
| 38 | | Jet | Jet | Jet | 1 |
| 39 | | Spring | Ressort | Resorte | 1 |
| 40 | | O-Ring (8.73 x 1.78) | Joint torique | Anillo tórico | 2 |
| 41 | | Detergent injector | Injecteur | Inyector | 1 |
| 42 | | Suction fitting 3/4" | Raccord de succion | Adaptador de succión | 1 |
| 43 | | Suction fitting | Raccord de succion | Adaptador de succión | 1 |
| 44 | | Filter | Filtre | Filtro | 1 |
| 46 | | Outlet fitting | Raccord de sortie | Adaptador de salida | 1 |
| 48 | | Spring | Ressort | Resorte | 3 |
| 49 | | Piston | Piston | Pistón | 3 |
| 50 | | Ring | Segment | Anillo | 3 |
| 51 | | Thrust bearing | Roulement | Cojinete | 1 |
| 52 | | Complete cage | Cage | Jaula | 1 |
| 53 | | Thrust bearing | Roulement | Cojinete | 1 |
| 54 | | Hollow shaft | Arbre | Túnel | 1 |
| 55 | | Bearing | Roulement | Cojinete | 1 |
| 56 | | Circlip | Anneau de retenue | Anillo retenedor | 2 |
| 57 | | Seal | Joint | Sello | 1 |
| 58 | | O-Ring (14 x 2) | Joint torique | Anillo tórico | 2 |
| 60 | | Ball | Balle | Pelota | 1 |
| 61 | | Seat | Siège | Asiento | 1 |
| 62 | | Spring | Ressort | Resorte | 1 |
| 63 | | Plug | Bouchon | Tapón | 1 |
| 64 | | Washer | Rondelle | Arandela | 1 |