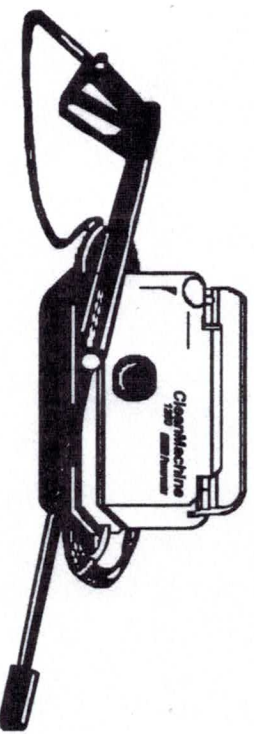


Coleman *Powermate*

Operator's Manual



IMPORTANT

Please make certain that everyone who uses the Coleman Powermate Pressure Washer thoroughly reads and understands these instructions prior to operation.

Clean Machine 1250
ELECTRIC PRESSURE WASHER

IMPORTANT SAFETY INSTRUCTIONS

Safety precautions are essential when any electrical or mechanical equipment is involved. These precautions are necessary when using, storing, and servicing electromechanical equipment. Using this equipment with the respect and caution demanded will considerably lessen the possibilities of personal injury. If safety precautions are overlooked or ignored, personal injury or property damage may occur.

The following symbols shown below are used extensively throughout this manual. Always heed these precautions, as they are essential when using any electrical or mechanical equipment.



This warning symbol identifies specific instructions or procedures which if not correctly followed could result in personal injury or death.



This caution symbol identifies specific instructions or procedures which, if not strictly observed, could result in damage to, or destruction of equipment.

This unit was designed for specific applications. It should not be modified and/or used for any application other than which it was designed. If there are any questions regarding its application, *write or call*. Do not use this unit until you have been advised. For more information, call Customer Service at 1-800-445-1805.



When using this product basic precautions should always be followed, including the following:

1. Read this manual carefully - **know your equipment**. Consider the applications, limitations, and the potential hazards specific to your unit.
2. Outlets with a third prong ground are required. Do not use without grounded prong.
3. Do not touch plug or outlet with wet hands.
4. Avoid accidental starts. Move switch on unit to "OFF" position before connecting or disconnecting cord to electrical outlets.
5. Water spray must never be directed towards any electric wiring or directly towards the pressure washer machine itself or fatal electric shock may occur.
6. Never carry your pressure washer by the cord. Do not pull on cord to disconnect from outlet.
7. To prevent damage, the cord should not be crushed, placed next to sharp objects nor near a heat source.
8. This product is provided with a Ground Fault Interrupter built into the power cord plug. If replacement of the plug or cord is needed, use only identical replacement parts.

9. Stay alert, watch what you are doing.
10. Follow maintenance instructions specified in this manual.
11. Check power cords before using. Damaged cords can reduce performance of pressure washer or cause a fatal electric shock.
12. The narrow pin point stream is very powerful. It is not recommended for use on painted surfaces, wood surfaces or items attached with an adhesive backing.
13. Keep operating area clear of all persons.
14. To reduce the risk of injury, close supervision is necessary when this product is used near children.
15. Always use both hands when operating pressure washer to maintain complete control of the wand.
16. Do not touch nozzle or water spray while operating.
17. Wear safety goggles while operating.
18. Disconnect power plug from the outlet when not in use and prior to the detaching of the high pressure hose.
19. Only Clean Machine Pressure Washer hoses and nozzles should be used.
20. Never tie knots or kink the high pressure hose as damage could result.
21. Prior to starting the pressure washer in cold weather, be sure ice has not formed in any part of the equipment.
22. Carefully observe all chemical instructions and warnings before using. Only Coleman Powermate Pressure Washer chemicals are recommended. Other chemicals may be harmful to people, the environment or damage your pressure washer.
23. The pressure washer should not be used in areas where gas vapors may be present. An electric spark could cause an explosion or fire.
24. To minimize the amount of water getting into the pressure washer, the unit should be placed as far as possible from the cleaning site during operation.
25. To prevent accidental discharge, the spray gun should be secured by locking trigger when not in use.
26. Do not operate this product when fatigued or under the influence of alcohol or drugs.
27. To allow free air circulation, the pressure washer should NOT be covered during operation.
28. Know how to stop the product and bleed pressure quickly. Be thoroughly familiar with the controls.
29. Do not over reach or stand on unstable support. Keep good footing and balance at all times.
30. **"WARNING - Risk of Injection or Injury - Do not direct discharge stream at persons."**

31. **GROUNDING INSTRUCTIONS** - This product must be grounded. If it should malfunction or breakdown, grounding provides a path of least resistance for electric current to reduce the risk of electric shock. This product is equipped with a cord having an equipment-grounding conductor and a grounding plug. The plug must be plugged into an appropriate outlet that is properly installed and grounded in accordance with all local codes and ordinances.



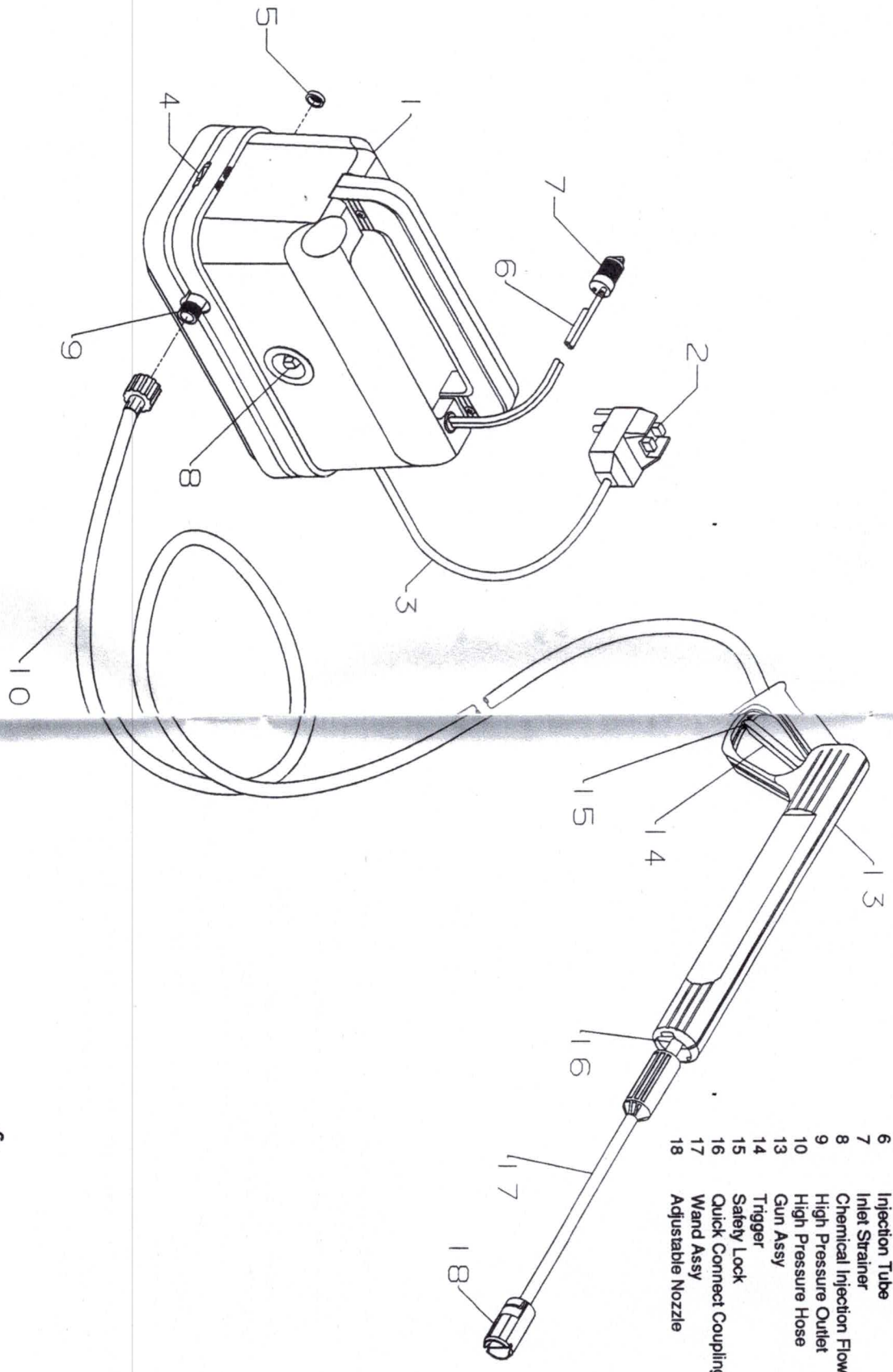
WARNING

WARNING: Improper connection of the equipment-grounding conductor can result in a risk of electrocution. Check with a qualified electrician or service person if you are in doubt as to whether the outlet is properly grounded. Do not modify the plug provided with the product -- if it will not fit the outlet, have a proper outlet installed by a qualified electrician. Do not use any type of adaptor with this product.

"SAVE THESE INSTRUCTIONS"

PRESSURE WASHER COMPONENTS

REF. NO.	DESCRIPTION
1	Motor and Pump in Case
2	Electrical Plug with GFCI
3	Power Supply Cord
4	On/Off Switch
5	Filter Washer
6	Injection Tube
7	Inlet Strainer
8	Chemical Injection Flow Regulator
9	High Pressure Outlet
10	High Pressure Hose
13	Gun Assy
14	Trigger
15	Safety Lock
16	Quick Connect Coupling
17	Wand Assy
18	Adjustable Nozzle



3.4 Power Supply Connection

The pressure washer is factory-equipped with an electrical cord and a Ground Fault Circuit Interrupter (GFCI) power plug. This cord should only be connected to an electrical outlet installed in accordance with local safety regulations. **NOTE: The power supply must be 120V, 60 hz and a minimum 15 amp circuit.**

If the circuit being used is already supplying power to other loads, it may be necessary, to disconnect those loads to allow a full 15 amps of current to be drawn without tripping the supply circuit breaker.



WARNING

WARNING: Test GFCI before each use. DO NOT use pressure washer if test below fails.

GFCI Test Procedures:

1. Plug GFCI into power receptacle.
2. Press reset button.
3. Press test button. Red indicator on reset button should appear.
4. Press reset button again for use.

NOTE: The GFCI must be reset each time the pressure washer is connected to an electrical outlet. Reset by simply pushing the reset button on the GFCI power plug. (See page 7 for diagram.)

WARNING -

- A. **Connect only to properly grounded outlet. Do not remove grounding pin.**
- B. **Inspect cord before using. Do not use if cord is damaged.**
- C. **Keep all connections dry and off the ground.**
- D. **Do not touch plug with wet hands.**
- E. **The pressure washer is provided with a ground-fault circuit interrupter built into the power plug. If replacement of the plug or cord is needed, use only identical replacement parts. Contact Customer Service for proper replacement parts.**



WARNING

Extension cords are not recommended unless they are plugged into a receptacle protected by a ground fault circuit interrupter. Any extension cord used should be 14 AWG and no longer than 50 feet to prevent excessive voltage loss. Use only extension cords intended for outdoor use. These extension cords are identified by a marking "Acceptable for use with outdoor appliances; store indoors when not in use."

4.0 OPERATING INSTRUCTIONS

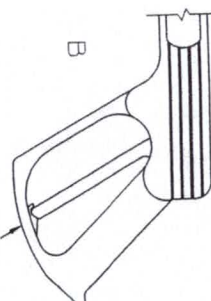
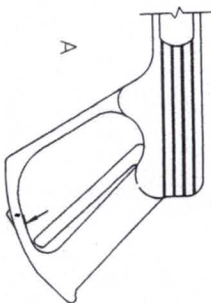


WARNING

WARNING: Risk of Injection or Injury. Do not direct discharge stream at persons.

4.1 Start-up procedure

1. Make sure water supply is connected and turned on.
2. Make sure the unit is plugged in and the GFCI HAS BEEN RESET.
3. Release gun safety if locked.



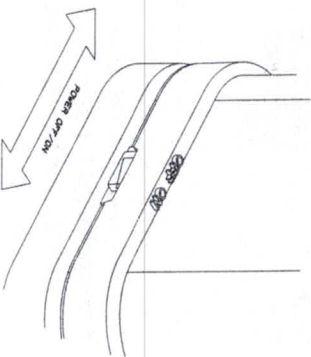
- a. Safety lock "unlocked"
 - b. Safety lock "locked"
4. To allow air to escape from the hose, squeeze trigger on the gun until there is a steady stream of water coming from the nozzle.
 5. Move power on/off switch on pressure washer to "ON" position. (See drawing below.)
 6. Squeeze gun trigger and pressure washer will be activated.

NOTE: Each time the gun trigger is released, the unit will completely shut off. The unit will also not operate if the water supply from the garden hose is shut off. These are safety features built into the pressure washer to prevent damage to the pump.



WARNING

WARNING: Always turn power on/off switch on the unit to the "OFF" position when the pressure washer is not in use.





CAUTION: To prevent damage to the wand/gun assembly when not in use, store in cavity provided in the pressure washer case.

4.2 Adjustable Spray Nozzle

The adjustable spray nozzle can adjust spray from fan to pencil point. The spray is adjusted by turning the nozzle.



CAUTION: The pencil point spray adjustment is very aggressive. We recommend that for most cleaning applications, a twenty degree (20°) spray angle be used to avoid damage to the surface being sprayed.

NOTE: The pressure of the spray on the surface you are cleaning increases as you move the wand closer to the surface.

To increase angle to a fan spray, turn counterclockwise.



To decrease angle to pencil point spray, turn clockwise.



4.3 Use Of Chemical

This pressure washer is intended for use only with the following Coleman Powermate chemicals.

ITEM	PART NO.
Soap	PA0650008
Wax	PA0650009
Degreaser	PA0650010

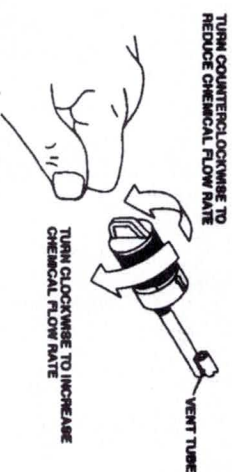


CAUTION: The use of any other chemical may cause damage to the pressure washer or clog the injection system. Coleman Powermate assumes no responsibility for any damages caused by chemicals injected through this pressure washer.

- NOTE:**
1. Vent tube must remain open.
 2. Adjustable strainer may prevent flow if set to the minimum position.

1. Visually inspect strainer at the end of the injection tube to verify that it is not clogged and not turned off.
2. Set chemical injection flow rate accordingly.

CHEMICAL INJECTOR STRAINER



3. Open a container of Coleman Powermate Pressure Washer Chemical and place next to the unit.
4. Insert the injection tube into the container all the way to the bottom.
5. Turn on chemical injection pump.



4.4 Cleaning Techniques

When cleaning with the pressure washer, many cleaning tasks can be solved with water alone, but for most tasks it is advantageous to use a detergent also. A detergent ensures a quick soaking of the dirt allowing the high pressure water to penetrate and remove the dirt more effectively.

Coleman Powermate Pressure Washer Chemicals are specially formulated to be used with your pressure washer.

Application Of Soap Or Degreaser

1. Apply the solution to a DRY work surface. **NOTE: WETTING THE SURFACE FIRST IS NOT RECOMMENDED, AS IT DILUTES THE DETERGENT AND REDUCES ITS CLEANING ABILITY.** On a vertical surface, apply horizontally from side to side starting from the bottom to avoid streaking.

2. Allow chemical to remain on the surface for a short time before rinsing.



CAUTION: Damage may occur to painted surface if chemical is allowed to dry on the surface. Wash and rinse a small section at a time. Avoid working on hot surfaces or in direct sunlight.

3. Rinse with clean water under high pressure. On a vertical surface, first rinse from the bottom up, then rinse from the top down. Hold nozzle 6 to 8 inches from the work surface at a 45° angle using the flat spray as a peeling tool rather than a scrub brush.

NOTE: Insure that the chemical injection system is completely clean prior to switching from one chemical to another.

Application Of Wax

1. Immediately after cleaning, apply Coleman Powermate Pressure Washer Wax. Place injection tube in container of wax.
 2. Apply the wax sparingly in an even layer. Apply to wet surfaces from the bottom up for even distribution and to avoid streaking.
 3. Remove the suction tube from the wax bottle and rinse off the surplus wax.
- NOTE: IF SURPLUS WAX IS NOT REMOVED, A HAZY FINISH MAY RESULT.**
4. Wipe dry to reduce water spotting.

When you have completed use of the chemical injection system, remove tube from container, continue to run and flush clean water through the tube until it is thoroughly cleaned. After injection system is thoroughly cleaned, turn "OFF" the chemical injection pump.



CAUTION

- CAUTION:** 1. Failure to flush the injection system properly will cause the injection system to become clogged and inoperable.
2. Failure to turn Injection pump off when not in use may cause damage to the pump.

4.5 End Of Operation

- Stop the unit by moving the on/off switch to the off position.
- Disconnect electrical plug.
- Turn off water and depressurize unit by squeezing trigger on the gun.



CAUTION

WARNING: Turn off water supply and squeeze trigger to depressurize the unit. Failure to do so could result in personal injury due to discharge of high pressure water.

- Disconnect the high pressure discharge hose and the water inlet hose.

5.0 USER MAINTENANCE

5.1 Connections

Connections on pressure washer hoses, gun and spray wand should be cleaned regularly and lubricated with grease to prevent leakage and damage to the o-rings.

5.2 NOZZLE

Clogging of the nozzle causes the pump pressure to be too high and cleaning is immediately required.

1. Separate the wand from the gun.
2. Clear the nozzle with the nozzle cleaner.



WARNING: The nozzle cleaner must only be used when the spray wand is disconnected from the gun or personal injury could result.



CAUTION

3. Flush the nozzle backwards with water.
4. Reconnect the wand to the gun.

Restart the pressure washer and depress the trigger on the spray gun. If the pressure is still too high, repeat above steps or refer to the Trouble Shooting Section of this manual.

5.3 Lubrication

The pressure washer is designed with a permanent lubrication system. Conventional oil check and oil changes are not necessary.

5.4 Inlet Water Screen

The pressure washer is equipped with a water inlet screen to protect the pump. This screen is located inside of the garden hose adapter.



CAUTION

CAUTION: If the screen is not kept clean, it will restrict the flow of water to the pressure washer and may cause damage to the pump.

Remove the screen and backflush to remove foreign matter. Replace immediately.



WARNING

CAUTION: Do not damage the screen while removing or cleaning. Any foreign particles entering the pump may damage the pump.

5.5 Cooling System

The air vents, located in and around the pressure washer, must be kept clean and free of any obstructions to ensure proper air cooling of the motor during operation.



WARNING: Prevent water from penetrating the vents of the pressure washer to minimize the risk of damage to the machine and to reduce the risk of shock to the operator.

6.0 MOVING AND STORAGE INSTRUCTIONS



CAUTION: Always store your pressure washer in a location where the temperature will not fall below 32° F. The pump in this machine is susceptible to permanent damage if frozen. **FREEZE DAMAGE IS NOT COVERED BY THE WARRANTY.**

If you must store your pressure washer in a location where the temperature is below 32° F, you can minimize the chance of damage to your machine by utilizing the following procedure:

1. Turn knob on the chemical injection strainer to maximum injection position.
2. Insert strainer into a jug of undiluted antifreeze.
3. Reduce the water inlet flow rate at the garden hose spicket to a level which will still allow the flow switch to activate.
4. Engage the chemical injection pump.
5. Run the pressure washer for a short period of time to allow the antifreeze to coat the internal pressure washer components.

7.0 TROUBLESHOOTING

Problem	Possible Cause	Correction
Motor will not start or stops while operating.	GFCI tripped or not reset. Circuit breaker tripped or fuse blown in circuit fuse box. Loose or disconnected plug. Tripped pressure washer thermal switch. Water supply interrupted.	Turn off unit. Press GFCI reset button firmly after it has been connected to the electrical supply. Disconnect all other loads on the same circuit and reset circuit breaker or replace fuse. Reconnect plug. Allow to cool and restart unit. Check garden hose.
Circuit breaker trips or fuse blown in fuse box.	Circuit overload. Extension cord too long or wire size too small. Nozzle partially blocked.	Check that the circuit is rated 15 amps or greater. Disconnect all loads on the circuit. Use proper extension cord as recommended in Operator's Manual. Clean nozzle as instructed in Section 5.2.
GFCI trips repeatedly.	Incorrect voltage. Internal short.	See Section 3.4. Call Coleman Powermate Customer Service Depart.
Water leaking from bottom of pump.	A small amount of leakage is normal.	If excessive leaking, occurs call Coleman Powermate Customer Service Department.
Unit does not stop when trigger is released.	Flow switch not operating properly.	Call Coleman Powermate Customer Service Depart.

TROUBLESHOOTING Continued . . .

Problem	Possible Cause	Correction
Motor running but pump not building maximum pressure or has irregular pressure.	Unit has been stored in freezing temperatures. Water inlet screen clogged. Kink in garden hose. Wand nozzle worn out. Air in pump.	Thaw out unit completely including hose, gun and wand. Clean screen. See Section 5.4. Straighten hose. Call Coleman Powermate Customer Service Depart. Let pressure washer run with gun trigger open until steady stream of water is released.
No Intake of chemicals.	Suction or discharge valves clogged or worn out.	Call Coleman Powermate Customer Service Depart.
	By-pass valve not operating effectively.	Call Coleman Powermate Customer Service Depart.
	Tube cracked or split.	Call Coleman Powermate Customer Service Depart.
Trigger will not move	Chemical pump not engaged.	See Section 4.3.
	Injection tube strainer clogged.	Clean strainer.
	Dried chemicals in injector	Dissolve by running warm water through the injection tube.
Trigger will not move	Gun safety lock engaged.	Release safety lock.

8.0 TECHNICAL DATA

Model	Clean Machine 1250
Part number	PW0751250
Pump pressure	1250 p.s.i.
Electrical requirement	120 v., 15 amps., 60 hz.
Electric cord	35 ft.
High pressure hose	30 ft.
Flow rate at 1250 p.s.i.	1.6 g.p.m.
Minimum fuse	15 amp
Pressure of Inlet water	20 - 100 p.s.i.
Injection rate	Variable
Inlet water	Cold Tap Water
Nozzle spray angle	0 - 60°

PARTS LIST
MODEL PW0751250

REF. NO.	PART NO.	DESCRIPTION
1	0051149	Handle Assembly
2	0051125	Isolator, Pump (4)
3	0051218	Gun Assy
4	0051177	Wand Assy
5	0051208	Inlet Strainer
6	0000427	Filter Washer

