

Mfg. No: 1051-1
580.762201, 2,200 PSI Craftsman



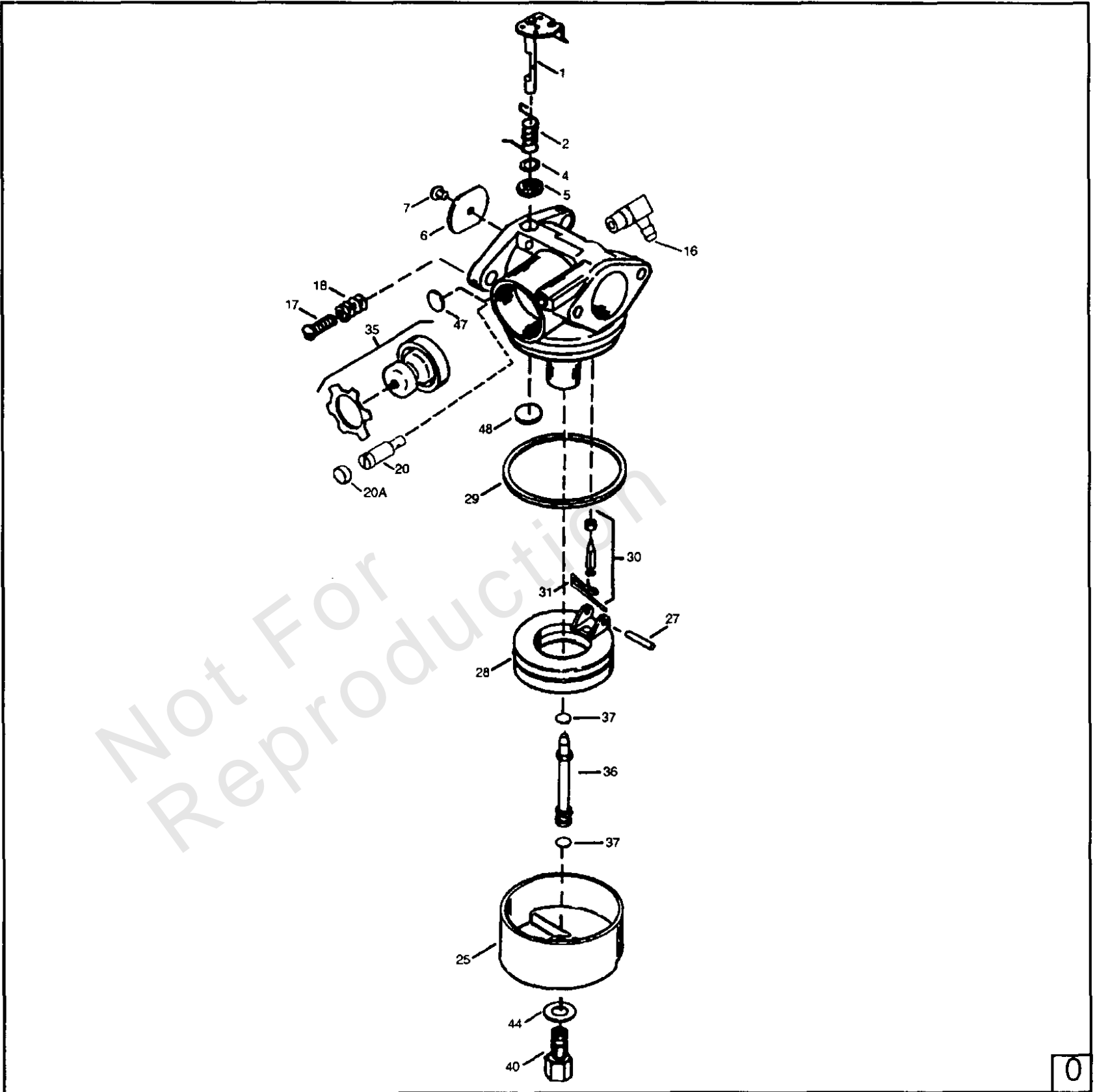
| Model Components | Page |
|----------------------------------|------|
| Carburetor..... | 4 |
| Main Unit..... | 6 |
| Pump & Crankcase Assemblies..... | 10 |
| Rewind Starter..... | 14 |
| Torque Specification Chart..... | 16 |

Not For
Reproduction

Carburetor

Note: Unless noted otherwise, use the standard torque specifications

Mfg. No: 1051-1



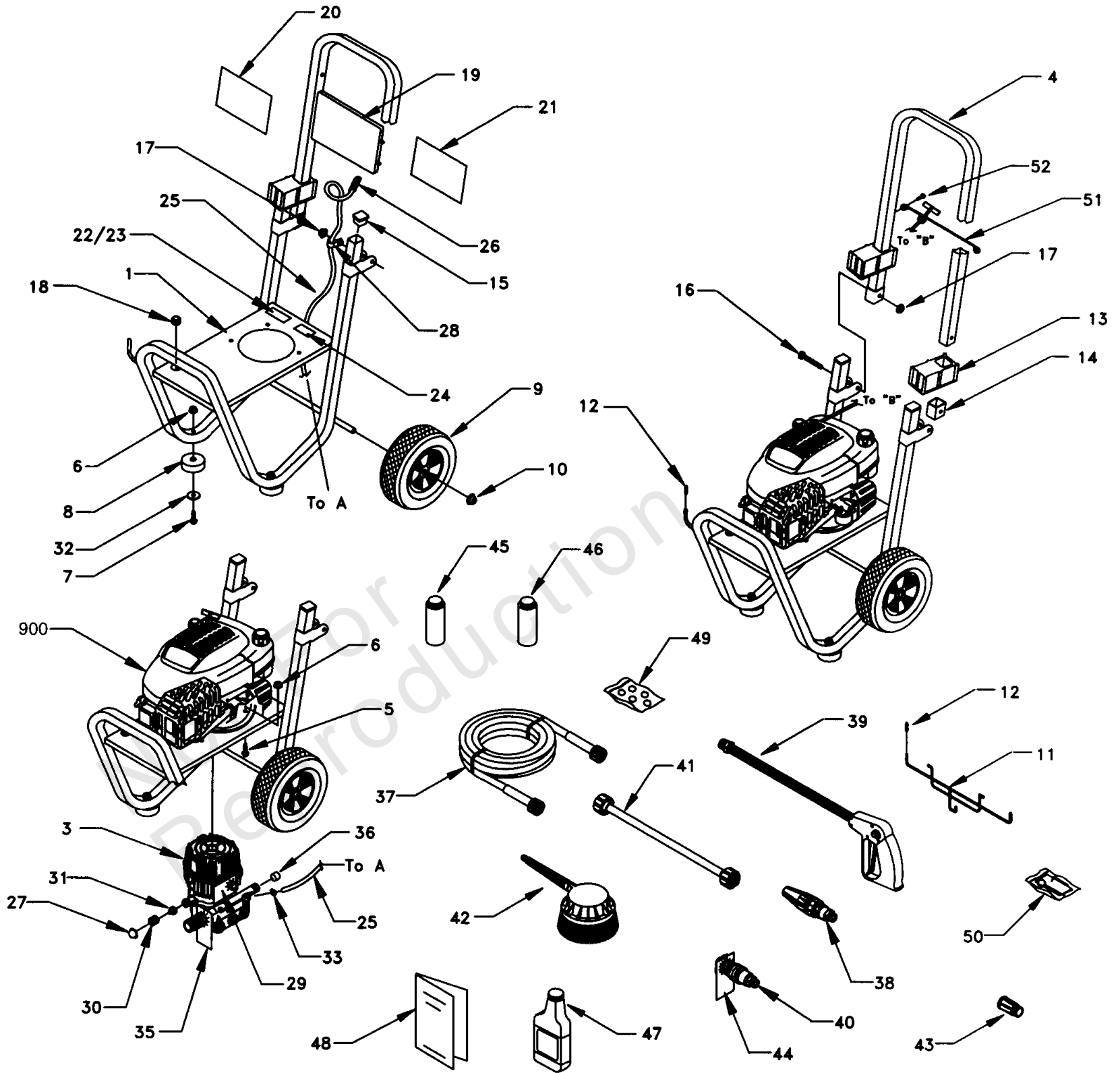
Carburetor

| REF NO | PART NO | QTY | DESCRIPTION |
|--------|---------|-----|---|
| 0 | 640147 | 1 | Carburetor -(Incl. 184 of Engine Parts List) |
| 1 | 631615 | 1 | Throttle Shaft & Lever Assembly |
| 2 | 631767 | 1 | Throttle Return Spring |
| 4 | 631184 | 1 | Dust Seal Washer |
| 5 | 631183 | 1 | Dust Seal -(Throttle) |
| 6 | 640070 | 1 | Throttle Shutter |
| 7 | 650506 | 1 | Shutter Screw |
| 16 | 631807 | 1 | Fuel Fitting |
| 17 | 651025 | 1 | Throttle Crack Screw/Idle Speed Screw |
| 18 | 630766 | 1 | Tension Spring |
| 20 | 640016 | 1 | Idle Restrictor Screw |
| 20A | 640053 | 1 | Idle Restrictor Screw Cap |
| 25 | 631867 | 1 | Float Bowl |
| 27 | 631024 | 1 | Float Shaft |
| 28 | 632019 | 1 | Float |
| 29 | 631028 | 1 | Float Bowl "O" Ring |
| 30 | 631021 | 1 | Inlet Needle, Seat, & Clip -(Incl. 31) |
| 31 | 631022 | 1 | Spring Clip |
| 35 | 36045A | 1 | Primer Bulb/Retainer Ring |
| 36 | 632745 | 1 | Main Nozzle Tube |
| 37 | 632547 | 1 | Main Nozzle Tube |
| | ----- | 2 | "O" Ring |
| 40 | 640083 | 1 | High Speed Bowl Nut |
| 44 | 27110 | 1 | Bowl Nut Washer |
| 47 | 630748 | 1 | Welch Plug, Idle Mixture Well |
| 48 | 631027 | 1 | Welch Plug, Atmospheric Vent |

Main Unit

Note: Unless noted otherwise, use the standard torque specifications

Mfg. No: 1051-1



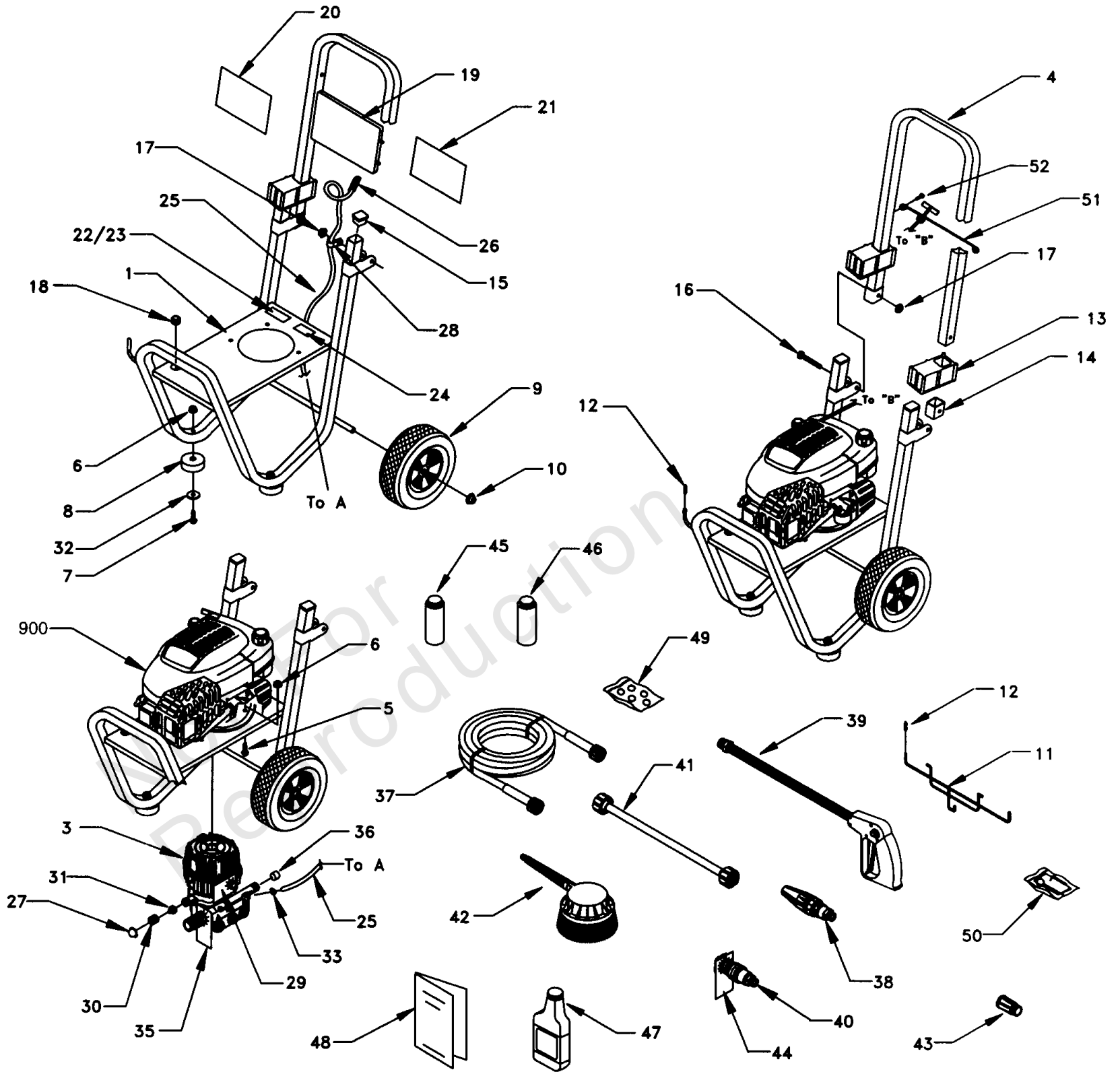
Main Unit

| REF NO | PART NO | QTY | DESCRIPTION |
|--------|---------|-----|---|
| 1 | EB2528 | 1 | BASE, VSPW |
| 2 | ~NSP | 1 | ENGINE, Tecumseh OHV 6.75HP, 143.986714 |
| 3 | ~NSP | 1 | PUMP, Medium Frame |
| 4 | EB2534 | 1 | HANDLE |
| 5 | 39414 | 3 | HHCS, M8 x 35 |
| 6 | 52858 | 5 | NUT, M8 Locking Flange |
| 7 | 39287 | 2 | HHCS, M8 x 45 |
| 8 | 27007 | 2 | MOUNT, Rubber Foot |
| 9 | B2142 | 2 | WHEEL 2" x 9" Black Mag |
| 10 | 75402 | 2 | PUSHNUT, 1/2" |
| 11 | B2168 | 1 | HANGER, Hose |
| 12 | B1460 | 3 | CAP, Vinyl |
| 13 | B1779 | 2 | COVER, Hinge |
| 14 | B2347 | 2 | CAP, End |
| 15 | 46476 | 2 | CAPLUG |
| 16 | 51767 | 2 | HHCS, M6 - 1.0 x 45 |
| 17 | 52857 | 2 | NUT, M6 Locking Flange |
| 18 | 92235 | 1 | GROMMET, Turbo Nozzle |
| 19 | B1631A | 1 | BILLBOARD |
| 20 | 82623 | 1 | DECAL, Craftsman 2200 PSI |
| 21 | B2626 | 1 | DECAL, Instructions |
| 22 | 91373 | 1 | DECAL, Data |
| 23 | 79552 | 1 | OVERLAMINATE |
| 24 | 96307 | 1 | DECAL, 1-800 # |
| 25 | A1040B | 1 | HOSE, Chemical |
| 26 | A1041 | 1 | FILTER, Chemical Hose |
| 27 | A1408 | 1 | CAP, Garden Hose Inlet |
| 28 | B1232 | 1 | CLAMP, Hose 7/16" |
| 29 | B1288 | 1 | TAG, Breather Cap |
| 30 | 21782 | 1 | QUICK DISCONNECT, Female |
| 31 | 21781 | 1 | QUICK DISCONNECT, Male |
| 32 | 50190 | 2 | WASHER, M8 Flat |
| 33 | 48031 | 1 | CLAMP, Hose 3/16" |
| 35 | 97054 | 1 | TAG, Pressure Adjust |
| 36 | 97100 | 1 | CAP, High Pressure |
| 37 | B1969 | 1 | HOSE, 1/4" x 25' |
| 38 | B1974G | 1 | TURBO, Nozzle |
| 39 | B2370 | 1 | GUN, High Pressure |
| 40 | 95587E | 1 | NOZZLE, Adjustable |
| 41 | 97123 | 1 | WAND, Extension |
| 42 | 88176A | 1 | BRUSH, Rotating |
| 43 | 88935 | 1 | ADAPTER, Brush |
| 44 | 97566 | 1 | TAG, Nozzle |
| 45 | B1736 | 1 | WASH, Vehicle/Boat |
| 46 | B1736A | 1 | WASH, House/Multi Purpose |
| 47 | 96382 | 1 | OIL, Engine SAE 30 |
| 48 | B3370 | 1 | MANUAL, Owners |
| 49 | B2730 | 1 | KIT, O-Ring Maintenance |
| 50 | 97009 | 1 | KIT, Nozzle Cleaning |
| 51 | B3073 | 1 | GUIDE, Recoil Rope |
| 52 | 20441 | 2 | SCREW, Self Drill 1/4" x 3/4" |

Main Unit

Note: Unless noted otherwise, use the standard torque specifications

Mfg. No: 1051-1



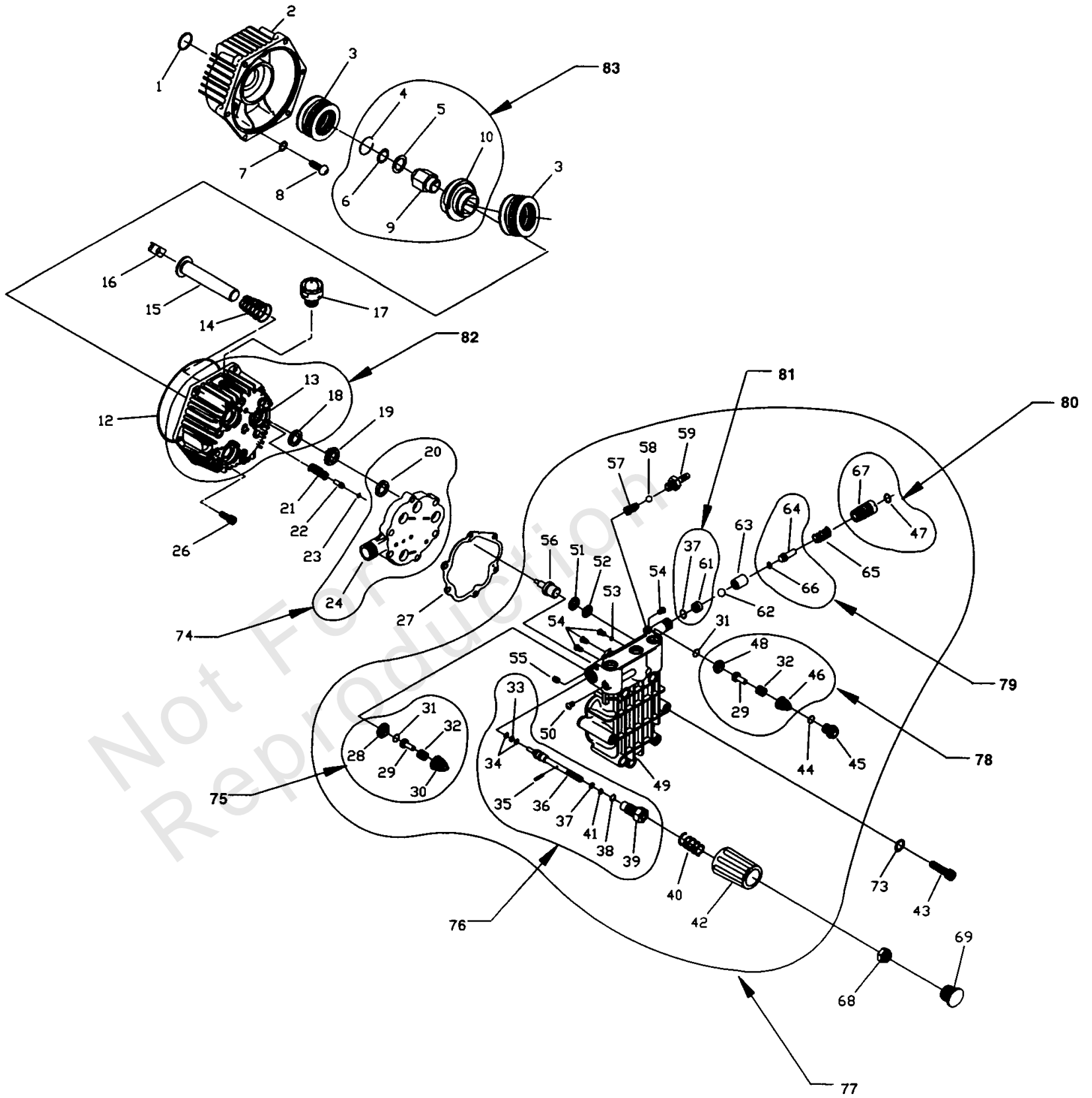
Main Unit

| REF NO | PART NO | QTY | DESCRIPTION |
|--------|---------|-----|---|
| 900 | ----- | | UNKNOWN |
| | 7175187 | | Garden Hose Quick Connect -Optional Accessories, Not Illustrated |
| | 7175197 | | Accessory Quick Connect Kit -Optional Accessories, Not Illustrated |
| | 7175199 | | Rotating Brush -Optional Accessories, Not Illustrated |
| | 7176430 | | Floor/Siding Brush -Optional Accessories, Not Illustrated |
| | 7176431 | | Utility Brush -Optional Accessories, Not Illustrated |
| | 7175115 | | Replacement Hose -Optional Accessories, Not Illustrated |
| | 7176450 | | 25' Extension Hose -Optional Accessories, Not Illustrated |
| | 7176451 | | 50' Extension Hose -Optional Accessories, Not Illustrated |
| | 7175116 | | O Ring Kit -Optional Accessories, Not Illustrated |
| | 7176486 | | Medium Duty Turbo Nozzle -Optional Accessories, Not Illustrated |
| | 7176400 | | House wash -Optional Accessories, Not Illustrated |
| | 7176401 | | Deckwash -Optional Accessories, Not Illustrated |
| | 7176402 | | Vehicle / Boat Wash -Optional Accessories, Not Illustrated |
| | 7176403 | | Deck Wash -Optional Accessories, Not Illustrated |

Pump & Crankcase Assemblies

Note: Unless noted otherwise, use the standard torque specifications

Mfg. No: 1051-1



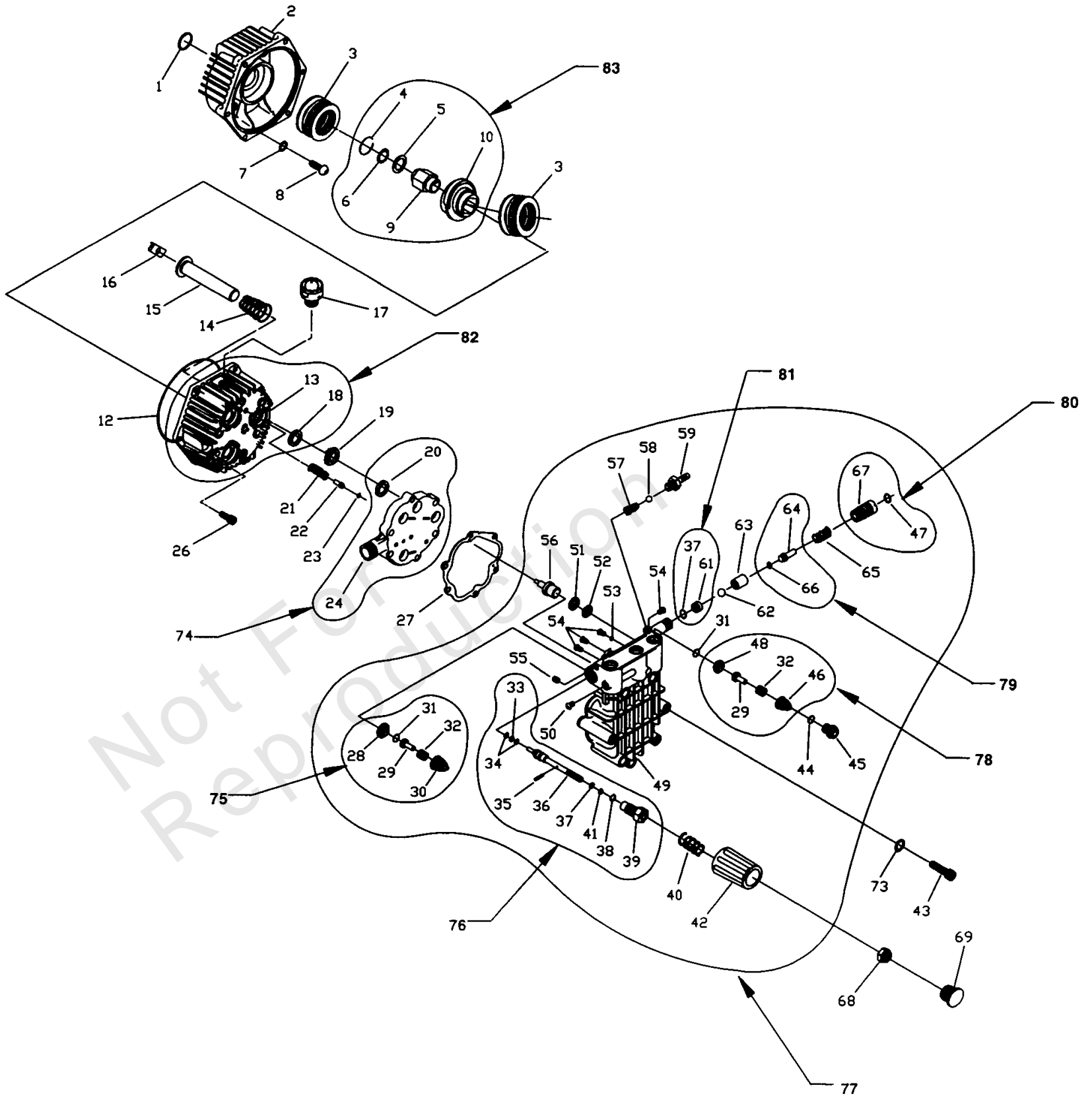
Pump & Crankcase Assemblies

| REF NO | PART NO | QTY | DESCRIPTION |
|--------|---------|-----|---|
| 1 | B2218 | 1 | O-RING, 1.625" x 0.103 |
| 2 | B2260 | 1 | ADAPTER, Engine |
| 3 | 96542 | 2 | BEARING, Eng. Adptr. Roller Thrust 4x4 |
| 4 | 97675 | 1 | O-RING, Cam Retainer |
| 5 | 97570 | 1 | WASHER, Thrust |
| 6 | 95524 | 1 | WASHER, Retainer |
| 7 | B2217 | 4 | O-RING, 0.239 ID x 0.070 |
| 8 | B2261B | 4 | SCREW, Button Hd 5/16 - 24 x 3/4" Lg |
| 9 | 95435 | 1 | ADAPTER, Engine Shaft 3/4" |
| 10 | 97671V | 1 | CAM, Axial 6.0 Lift |
| 12 | 93790 | 1 | O-RING, Crankcase 113.97 x 119.21 x 2.62 |
| 13 | 97568A | 1 | CRANKCASE, Pump |
| 14 | 96400 | 3 | SPRING, Piston Return |
| 15 | 99427 | 3 | ASSEMBLY, Ceramic Piston & Cap |
| 16 | 94944 | 3 | SHOE, Piston Pivot |
| 17 | 99735 | 1 | ASSEMBLY, Breather |
| 18 | 93680 | 3 | SEAL, Oil Piston |
| 19 | 93668 | 3 | SPACER, Pilot |
| 20 | 93667 | 3 | SEAL, U - Cup ELF |
| 21 | 93652 | 1 | SPRING, Thermal Relief Actuator |
| 22 | 95416 | 1 | PISTON, Thermal Relief Actuator |
| 23 | 93876 | 1 | O-RING, Decal Relief 2.9 x 6.5 x 1.78 |
| 24 | A1320 | 1 | SPACER, Inlet Plate |
| 26 | 40945 | 6 | SCREW, SHC M6 x 1.0 x 20 mm Lg |
| 27 | A2069 | 1 | GASKET, Head |
| 28 | A2062 | 3 | SEAT, Check Valve Inlet |
| 29 | A2060 | 6 | POPPET, Check Valve |
| 30 | 97931 | 3 | CAGE, Check Valve Inlet |
| 31 | B2640 | 6 | O-RING, Chk Valve 12.4 x 15.96 x 1.78 |
| 32 | 97929 | 6 | SPRING, Check Valve Outlet |
| 33 | 97843 | 1 | O-RING, 9.25 x 12.81 x 1.78 |
| 34 | A2017 | 2 | PAR-BACK, Backup Ring |
| 35 | A1719 | 1 | PIN, 2.0 Dia. Spindle |
| 36 | B3184 | 1 | SPINDLE, Pressure Regulator |
| 37 | 93656 | 2 | O-RING, Spindle 6 x 10 x 1.78 |
| 38 | A3829 | 1 | O-RING, Retainer Nut 14 x 17.56 x 1.78 |
| 39 | A1712 | 1 | NUT, Retainer - Spindle |
| 40 | A1716 | 1 | SPRING, Unloader |
| 41 | A2016 | 1 | PAR-BACK, Backup Ring |
| 42 | B3117 | 1 | HANDLE, Unloader |
| 43 | A2013 | 6 | BOLT, Head M8 x 1.25 x 70mm Lg |
| 44 | 97840 | 3 | O-RING, Chk Valve Cap 15.6 x 19.16 x 1.78 |
| 45 | 97841 | 3 | CAP, Outlet Port |
| 46 | 20002 | 3 | CAGE, Check Valve Outlet |
| 47 | A3805 | 1 | O-RING, Venturi 10.82 x 14.38 x 1.78 |
| 48 | A2217 | 3 | SEAT, Check Valve Outlet |
| 49 | A1318 | 1 | CYLINDER, Head |
| 50 | B1758 | 1 | PLUG, Button M8 x 1.25 x 8 mm |
| 51 | 96053 | 3 | SEAL, High Pressure |
| 52 | 96015 | 3 | RING, Bearing |
| 53 | A1717 | 1 | MAGNET, Ball Deflector |

Pump & Crankcase Assemblies

Note: Unless noted otherwise, use the standard torque specifications

Mfg. No: 1051-1



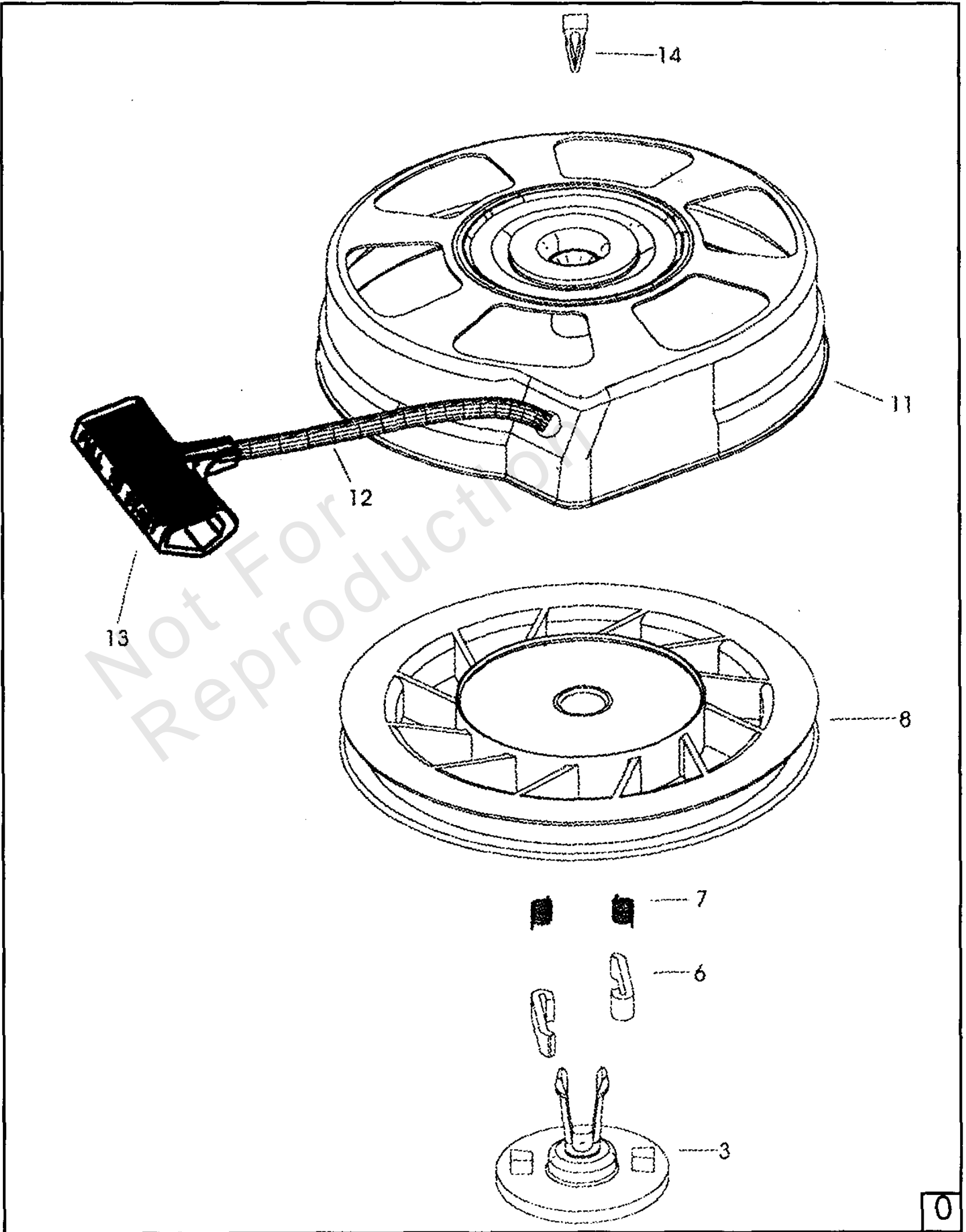
Pump & Crankcase Assemblies

| REF NO | PART NO | QTY | DESCRIPTION |
|--------|---------|-----|------------------------------------|
| 54 | B1757 | 4 | PLUG, Button M6 x 1.0 x 8mm |
| 55 | A1718 | 1 | SET SCREW, M8 - 1.25 x 8mm |
| 56 | 93644 | 1 | ACTUATOR, Thermal Relief |
| 57 | 95380 | 1 | SPRING, Chemical Injector |
| 58 | 95379 | 1 | BALL, 5.5 dia. Chemical Injector |
| 59 | A1575 | 1 | BARB HOSE, Brass with Nylon Insert |
| 61 | A1713 | 1 | SEAT, Ball Unloader |
| 62 | A2015 | 1 | BALL, Stainless Steel 9/32 Dia. |
| 63 | A2503 | 1 | SEAT, Trapped Line Pressure |
| 64 | A2756 | 1 | VALVE, Shuttle Piston |
| 65 | 89138 | 1 | SPRING, Check Valve |
| 66 | 21123 | 1 | O-RING, 3.68 x 7.24 x 1.78 cs |
| 67 | A1714 | 1 | VENTURI, Chemical |
| 68 | A2014 | 1 | SET SCREW, M6 - 1.0 x 8mm |
| 69 | B2241 | 1 | CAP, Plastic |
| 73 | B2665 | 6 | WASHER |
| 74 | B2015 | 0 | SPACER PLATE ASSEMBLY |
| 75 | B3100 | 0 | INLET CHECK VALVE ASSEMBLY |
| 76 | B3185 | 0 | UNLOADER SPINDLE ASSEMBLY |
| 77 | B3183 | 0 | PUMP HEAD ASSEMBLY |
| 78 | A2034 | 0 | OUTLET CHECK VALVE ASSEMBLY |
| 79 | B1879 | 0 | TRAPPED LINE PRESSURE CHECK VALVE |
| 80 | B2151 | 0 | VENTURE ASSEMBLY |
| 81 | B2152 | 0 | BALL SEAT ASSEMBLY |
| 82 | B2016 | 0 | CRANKCASE ASSEMBLY |
| 83 | B3328 | 0 | AXIAL CAM ASSEMBLY |

Rewind Starter

Note: Unless noted otherwise, use the standard torque specifications

Mfg. No: 1051-1



Rewind Starter

| REF NO | PART NO | QTY | DESCRIPTION |
|--------|---------|-----|---|
| 0 | 590739 | 1 | Rewind Starter |
| 3 | 590740 | 1 | Retainer |
| 6 | 590616 | 2 | Starter Dog |
| 7 | 590617 | 2 | Dog Spring |
| 8 | 590618A | 1 | Pulley & Rewind Spring Ass'y |
| 11 | 59063B | 1 | Starter Housing Ass'y -(40 degree grommet) |
| 12 | 590535 | 1 | Starter Rope -(Length 98" x 9/64" dia.) |
| 13 | 590701 | 1 | Starter Handle |
| 14 | 590741 | 1 | Locking Tab |

Not For Reproduction

Hardware Identification & Torque Specifications

| Torque Specification Chart | | | | | | | | |
|--|-----------|------|-----------|------|------------|------|------------|------|
| FOR STANDARD METRIC MACHINE HARDWARE (Tolerance ± 20%) | | | | | | | | |
| Property Class | 5.6 | | 8.8 | | 10.9 | | 12.9 | |
| | Class 5.6 | | Class 8.8 | | Class 10.9 | | Class 12.9 | |
| Size Of Hardware | in/lbs | Nm. | in/lbs | Nm. | in/lbs | Nm. | in/lbs | Nm. |
| | ft/lbs | | ft/lbs | | ft/lbs | | ft/lbs | |
| M3 | 5.88 | .56 | 13.44 | 1.28 | 19.2 | 1.80 | 22.92 | 2.15 |
| M4 | 13.44 | 1.28 | 30.72 | 2.90 | 43.44 | 4.10 | 52.56 | 4.95 |
| M5 | 26.4 | 2.50 | 60.96 | 5.75 | 5.97 | 8.10 | 7.15 | 9.7 |
| M6 | 44.64 | 4.3 | 7.3 | 9.9 | 10.3 | 14 | 12.1 | 16.5 |
| M7 | 5.2 | 7.1 | 12.1 | 16.5 | 16.9 | 23 | 19.9 | 27 |
| M8 | 7.7 | 10.5 | 17.7 | 24 | 25 | 34 | 29 | 40 |
| M10 | 15 | 21 | 35 | 48 | 50 | 67 | 59 | 81 |
| M12 | 26 | 36 | 61 | 83 | 86.2 | 117 | 103 | 140 |
| M14 | 42 | 58 | 101 | 132 | 136 | 185 | 162 | 220 |
| M16 | 64 | 88 | 147 | 200 | 210 | 285 | 250 | 340 |
| M18 | 89 | 121 | 202 | 275 | 287 | 390 | 346 | 470 |
| M20 | 126 | 171 | 290 | 390 | 405 | 550 | 486 | 660 |
| M22 | 169 | 230 | 390 | 530 | 559 | 745 | 656 | 890 |
| M24 | 217 | 295 | 497 | 375 | 708 | 960 | 840 | 1140 |
| M27 | 320 | 435 | 733 | 995 | 1032 | 1400 | 1239 | 1680 |
| M30 | 435 | 590 | 995 | 1350 | 1401 | 1900 | 1681 | 2280 |
| M33 | 590 | 800 | 1349 | 1830 | 1902 | 2580 | 2278 | 3090 |
| M36 | 759 | 1030 | 1740 | 2360 | 2441 | 3310 | 2935 | 3980 |
| M39 | 988 | 1340 | 2249 | 3050 | 3163 | 4290 | 3798 | 5150 |

| Torque Specification Chart | | | | | | |
|---|-------------|-------|-------------|-------|-------------|---------|
| FOR STANDARD MACHINE HARDWARE (Tolerance ± 20%) | | | | | | |
| Hardware Grade | No Marks | | SAE Grade 5 | | SAE Grade 8 | |
| | SAE Grade 2 | | SAE Grade 5 | | SAE Grade 8 | |
| Size Of Hardware | in/lbs | Nm. | in/lbs | Nm. | in/lbs | Nm. |
| | ft/lbs | | ft/lbs | | ft/lbs | |
| 8-32 | 19 | 2.1 | 30 | 3.4 | 41 | 4.6 |
| 8-36 | 20 | 2.3 | 31 | 3.5 | 43 | 4.9 |
| 10-24 | 27 | 3.1 | 43 | 4.9 | 60 | 6.8 |
| 10-32 | 31 | 3.5 | 49 | 5.5 | 68 | 7.7 |
| 1/4-20 | 66 | 7.6 | 8 | 10.9 | 12 | 16.3 |
| 1/4-28 | 76 | 8.6 | 10 | 13.6 | 14 | 19.0 |
| 5/16-18 | 11 | 15.0 | 17 | 23.1 | 25 | 34.0 |
| 5/16-24 | 12 | 16.3 | 19 | 25.8 | 29 | 34.0 |
| 3/8-16 | 20 | 27.2 | 30 | 40.8 | 45 | 61.2 |
| 3/8-24 | 23 | 31.3 | 35 | 47.6 | 50 | 68.0 |
| 7/16-14 | 30 | 40.8 | 50 | 68.0 | 70 | 95.2 |
| 7/16-20 | 35 | 47.6 | 55 | 74.8 | 80 | 108.8 |
| 1/2-13 | 50 | 68.0 | 75 | 102.0 | 110 | 149.6 |
| 1/2-20 | 55 | 74.8 | 90 | 122.4 | 120 | 163.2 |
| 9/16-12 | 65 | 88.4 | 110 | 149.6 | 150 | 204.0 |
| 9/16-18 | 75 | 102.0 | 120 | 163.2 | 170 | 231.2 |
| 5/8-11 | 90 | 122.4 | 150 | 204.0 | 220 | 299.2 |
| 5/8-18 | 100 | 136 | 180 | 244.8 | 240 | 326.4 |
| 3/4-10 | 160 | 217.6 | 260 | 353.6 | 386 | 525.0 |
| 3/4-16 | 180 | 244.8 | 300 | 408.0 | 420 | 571.2 |
| 7/8-9 | 140 | 190.4 | 400 | 544.0 | 600 | 816.0 |
| 7/8-14 | 155 | 210.8 | 440 | 598.4 | 660 | 897.6 |
| 1-8 | 220 | 299.2 | 580 | 788.8 | 900 | 1,244.0 |
| 1-12 | 240 | 326.4 | 640 | 870.4 | 1,000 | 1,360.0 |

The guides and ruler furnished below are designed to help you select the appropriate hardware.



Nut, M8

Thread Diameter (mm)

Inside Diameter (in) Threads per inch

Nut, 1/2-16



Screw, M8- 1.25 x 25

Thread Diameter (mm) Distance between threads (mm) Body Length (mm)

Body Diameter Threads per inch Body Length (in)

Screw, 1/2- 16 x 2



Standard Hardware Sizing

When a washer or nut is identified as 1/2" (M8), this is the *Nominal size*, meaning the *inside diameter* is 1/2 inch (8mm metric thread diameter); if a second number is present it represents the *threads per inch* (distance between threads).

When bolt or capscrew is identified as 1/2 - 16 x 2" (M8 - 1.25 x 50), this means the *Nominal size*, or body diameter is 1/2 inch (8mm metric thread diameter), the second number, 16, represents the *threads per inch*, (*distance between threads*). The final number is the body length of the bolt or screw, 2 inches (50mm).

NOTES

- These torque values are to be used for all hardware excluding: locknuts, self-tapping screws, thread forming screws, sheet metal screws and socket head setscrews.
- Recommended seating torque values for locknuts:
 - for prevailing torque locknuts - use 65% of grade 5 torques.
 - for flange whizlock nuts and screws - use 135% of grade 5 torques.
- Unless otherwise noted on assembly drawings, all torque values must meet this specification.

Common Hardware Types

Hex Head Capscrew



Washer



Carriage Bolt



Hex Nut

Wrench & Fastener Size Guide

| | | | | |
|----------------------------------|----------------------------------|----------------------------------|--|---------------------------------|
| | | | | |
| 1/4" Bolt or Nut Wrench—7/16" | 5/16" Bolt or Nut Wrench—1/2" | 3/8" Bolt or Nut Wrench—9/16" | 7/16" Bolt or Nut Wrench (Bolt)—5/8" Wrench (Nut)—11/16" | 1/2" Bolt or Nut Wrench—3/4" |
| M6 Bolt or Nut Wrench—10mm | M8 Bolt or Nut Wrench—13mm | M10 Bolt or Nut Wrench—17mm | M12 Bolt or Nut Wrench—19mm | M14 Bolt or Nut Wrench—22mm |

CRAFTSMAN®