

Spare parts list
(5.958-596.0) Spare parts list K 670 M *CDN

Table of contents

Spare parts list K 670 M *CDN (5.958-596.0)	6
10 Individual parts (0.102-600.0).....	7
11 Individual parts cover (0.102-707.0).....	8
12 Bottom part (0.102-601.0).....	11
13 Hose reel (0.102-331.0).....	13
14 Cable vat (0.102-602.0).....	15
20 Pump set (0.107-594.0).....	17
21 Cylinder head (0.107-595.0).....	19
100 PUMP SET COMPLETE (2.883-883.0).....	21
22 Piston (0.107-596.0).....	22
100 PUMP SET COMPLETE (2.883-883.0).....	24
30 Motor (0.112-508.0).....	25
31 Ventilation (0.112-509.0).....	26
32 Transmission (0.112-510.0).....	28
40 Accessories (0.147-879.0).....	30
Hand trigger gun (0.148-121.0).....	31
42 Hand trigger gun (0.105-842.0).....	33
43 Hand trigger gun (0.110-015.0).....	35
3 Spare part set O-Ring seal 5x (2.880-296.0).....	37
44 Jet pipe (0.147-880.0).....	38
50 Electric control box (0.126-973.0).....	40

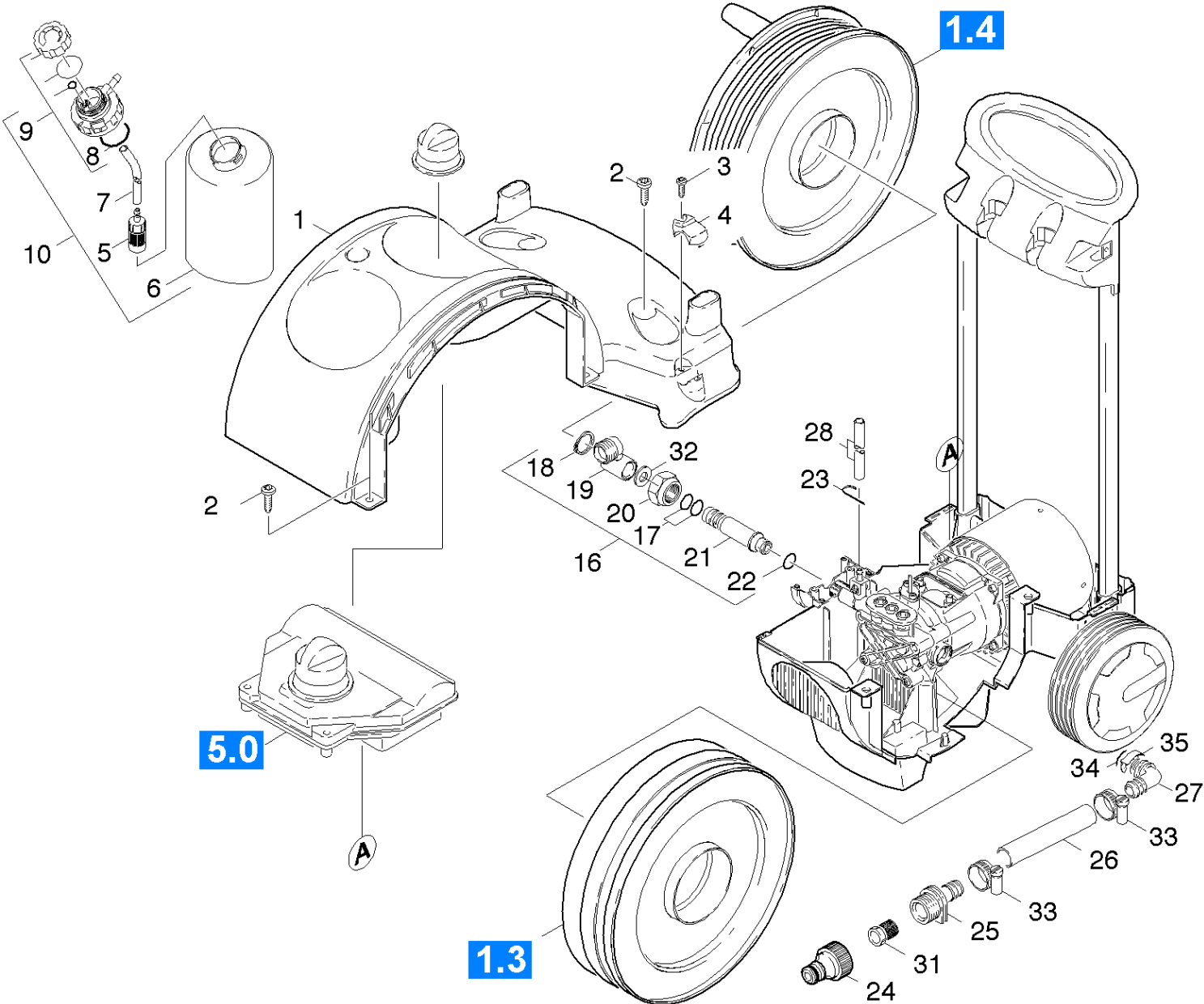
Spare parts list K 670 M *CDN (5.958-596.0)

Pos	Material #	Name	from ser.nr.	up to ser.nr.
10	0.102-600.0	Individual parts	0000000000	0000000000
20	0.107-594.0	Pump set	0000000000	0000000000
30	0.112-508.0	Motor	0000000000	0000000000
40	0.147-879.0	Accessories	0000000000	0000000000
50	0.126-973.0	Electric control box	0000000000	0000000000

10 Individual parts (0.102-600.0)

Pos	Material #	Name	Qty.	Unit	from ser.nr.	up to ser.nr.
11	0.102-707.0	Individual parts cover	1.000	ST	0000000000	0000000000
12	0.102-601.0	Bottom part	1.000	ST	0000000000	0000000000
13	0.102-331.0	Hose reel	1.000	ST	0000000000	0000000000
14	0.102-602.0	Cable vat	1.000	ST	0000000000	0000000000

11 Individual parts cover (0.102-707.0)

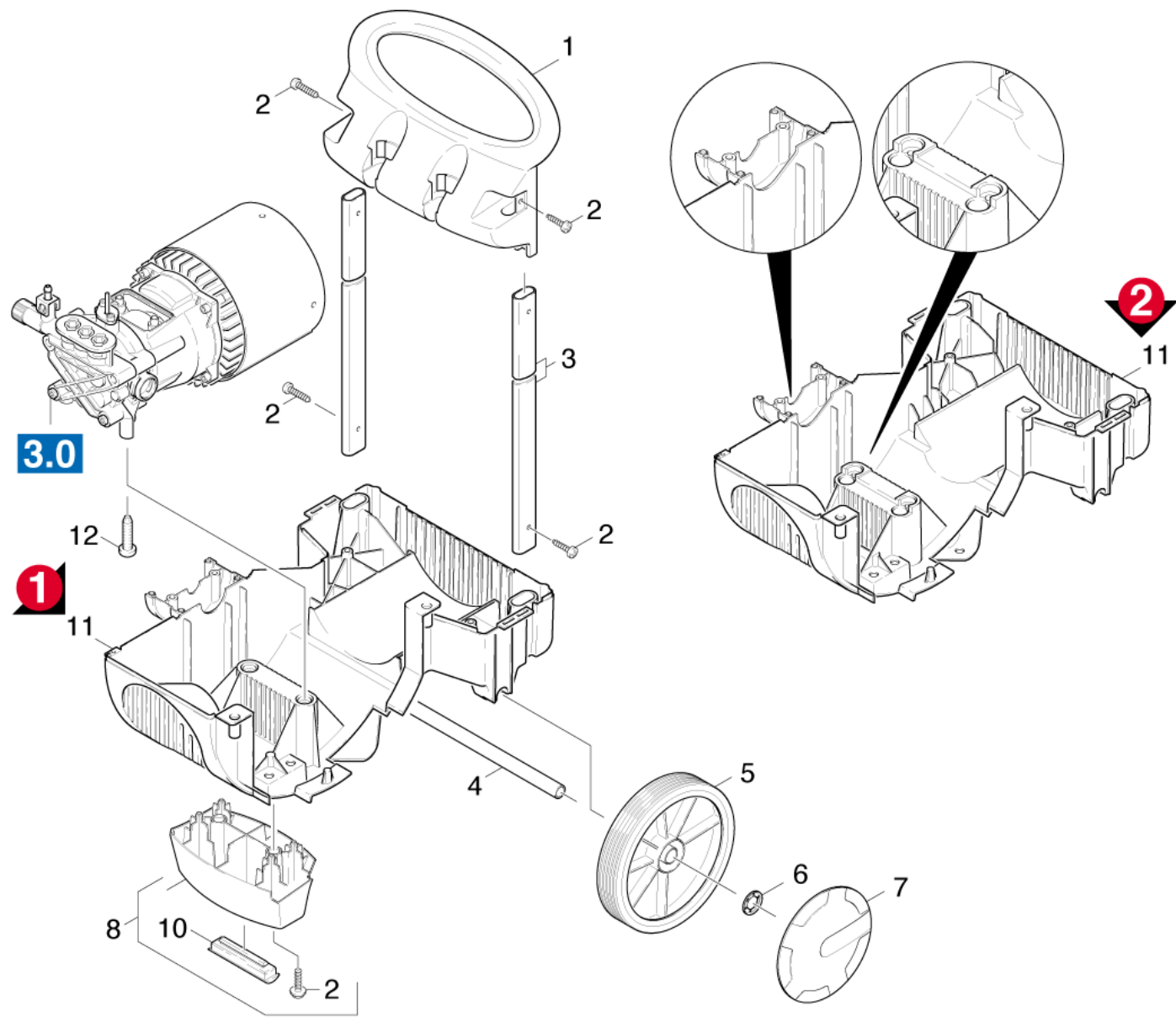


11 Individual parts cover (0.102-707.0)

ET/VT (spare/wear parts)	Pos	Material #	Name	Qty.	Unit	from ser.nr.	up to ser.nr.	Footnote text
	1	5.033-318.0	Chassis top part neutrally	1.000	ST	0000000000	0000000000	
X-X	2	7.303-112.0	Screw 6x20 -10.9-R2R (In6Rd)	6.000	ST	0000000000	0000000000	
X	3	7.303-129.0	Screw 4x16 -10.9-R2R (K-In6Rd)	1.000	ST	0000000000	0000000000	
	4	5.394-521.0	Covering cap E-KABEL	1.000	ST	0000000000	0000000000	
X	5	5.731-652.0	Filter with weight	1.000	ST	0000000000	0000000000	
	6	5.071-115.0	Tank cleaning agents	1.000	ST	0000000000	0000000000	
	7	6.388-216.0	Hose DN 5	1.000	M	0000000000	0000000000	TO ORDER AS CUT GOODS
	8	6.362-740.0	O-Ring seal 34,60X 2,62	1.000	ST	0000000000	0000000000	
X-X	9	4.063-807.0	Cover tank cleaning agents	1.000	ST	0000000000	0000000000	
	10	4.071-120.0	Tank cleaning agents complete	1.000	ST	0000000000	0000000000	
	16	4.401-080.0	Rotary bushing	1.000	ST	0000000000	0000000000	
	17	6.363-027.0	O-Ring seal complete 1ST.-R.	2.000	ST	0000000000	0000000000	
	18	7.343-306.0	Lock washer 12-St-A2E DIN 6799	1.000	ST	0000000000	0000000000	
	19	5.401-240.0	Rotary bushing	1.000	ST	0000000000	0000000000	
	20	7.383-113.0	Union nut BLL-15-St-A2K DIN3870	1.000	ST	0000000000	0000000000	
	21	5.105-288.0	Hollow shaft	1.000	ST	0000000000	0000000000	
X-X	22	6.362-151.0	O-Ring d. 10 x 2 NBR 70	1.000	ST	0000000000	0000000000	
X-X	23	6.641-463.0	Cable tape	1.000	ST	0000000000	0000000000	
X-X	24	6.465-031.0	Connection 3/4	1.000	ST	0000000000	0000000000	
X-X	25	5.789-007.0	Connection piece	1.000	ST	0000000000	0000000000	
	26	6.390-456.0	Piece of tube DN15	1.000	ZST	0000000000	0000000000	TO ORDER AS CUT GOODS
	27	5.443-452.0	Angle bushing	1.000	ST	0000000000	0000000000	
X	28	6.390-426.0	Hose DN 5	1.000	M			TO ORDER AS CUT GOODS
X-X	31	6.414-252.0	Strainer	1.000	ST	0000000000	0000000000	
	32	7.343-052.0	Shim ring 16x22x1-St2K50 DIN 988	1.000	ST	0000000000	0000000000	

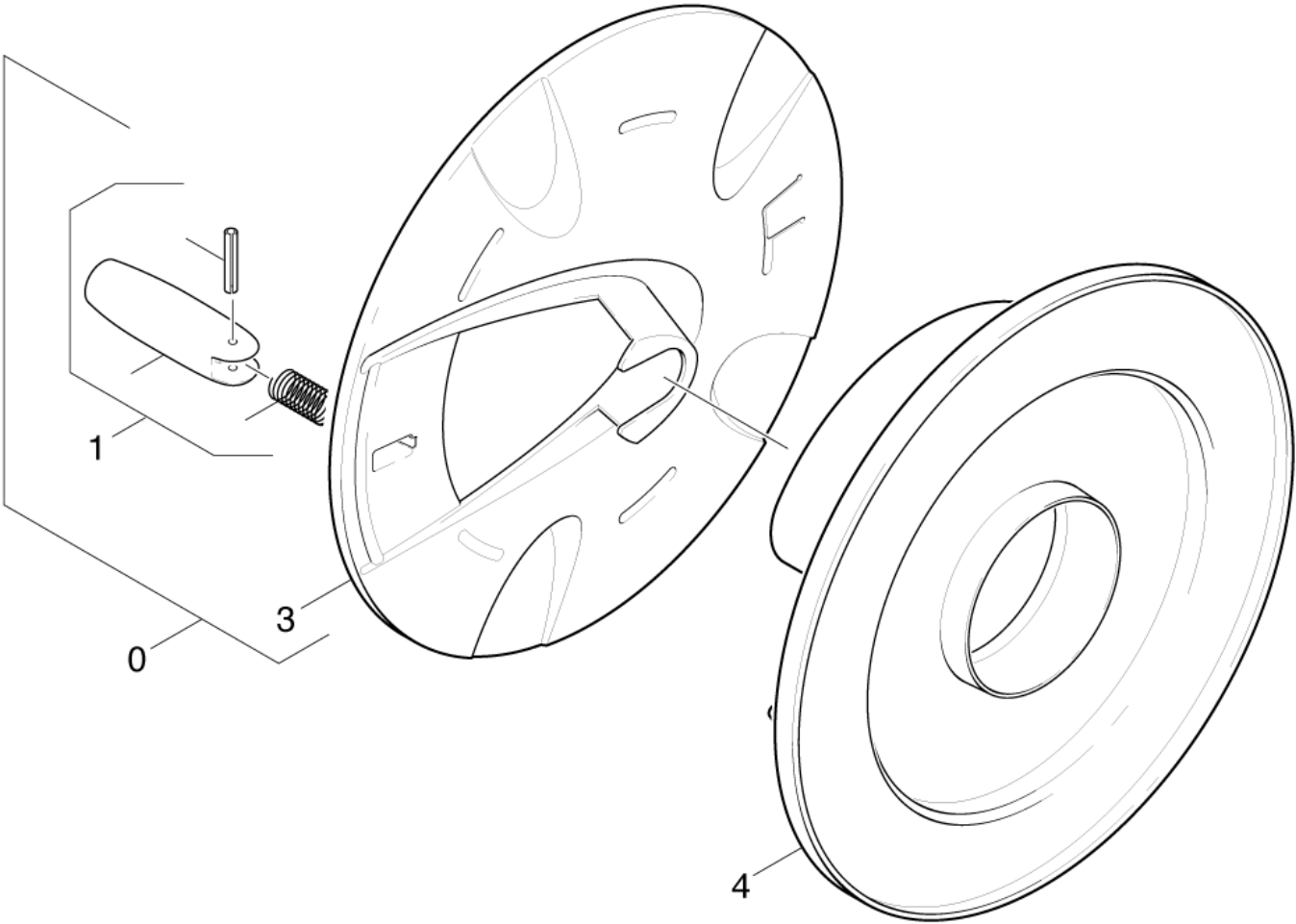
11 Individual parts cover (0.102-707.0)

ET/VT (spare/wear parts)	Pos	Material #	Name	Qty.	Unit	from ser.nr.	up to ser.nr.	Footnote text
X-X	33	6.388-547.0	Hose clip	2.000	ST	0000000000	0000000000	
X-X	34	6.363-038.0	O-Ring seal 13X3 NBR 70	1.000	ST	0000000000	0000000000	
X	35	6.343-186.0	Locking ring	1.000	ST	0000000000	0000000000	



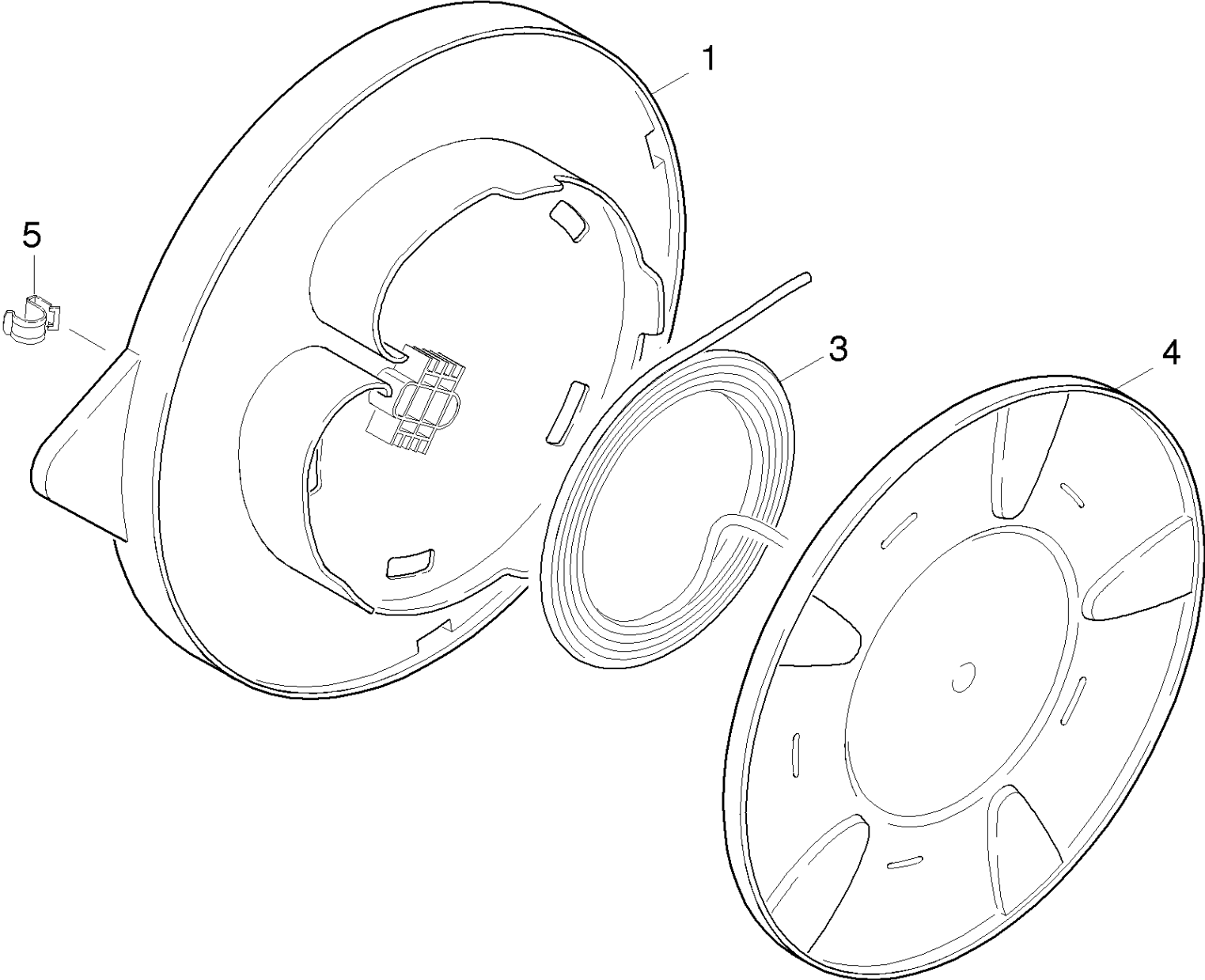
12 Bottom part (0.102-601.0)

ET/VT (spare/wear parts)	Pos	Material #	Name	Qty.	Unit	from ser.nr.	up to ser.nr.	var. information
	1	5.321-625.0	Handhold	1.000	ST	0000000000	0000000000	
	2	9.086-157.0	Screw 5x30	6.000	ST	0000000000	0000000000	
	3	5.029-419.0	Tube K670M	2.000	ST	0000000000	0000000000	
	4	5.105-309.0	Axle L=359	1.000	ST	0000000000	0000000000	
X-X	5	6.435-766.0	Wheel D180	2.000	ST	0000000000	0000000000	
X-X	6	6.343-168.0	Lock washer	2.000	ST	0000000000	0000000000	
	7	6.435-385.0	Wheel cab zinc yellow	2.000	ST	0000000000	0000000000	
	8	2.883-955.0	Conversion kit outrigger complete	1.000	ST	0000000000	0000000000	
	10	5.057-054.0	Support	1.000	ST	0000000000	0000000000	
	11	5.031-824.0	Chassis bottom part	1.000	ST	0000000000	0000000000	VERSION 2
	11	5.031-568.0	Chassis bottom part -K670M	1.000	ST	0000000000	0000000000	VERSION 1
	12	7.306-094.0	Screw M6x25 -8.8-R3R (In6Rd)	2.000	ST	0000000000	0000000000	



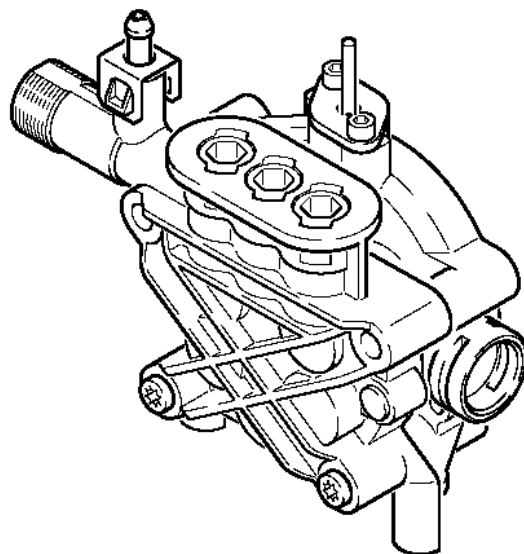
13 Hose reel (0.102-331.0)

Pos	Material #	Name	Qty.	Unit	from ser.nr.	up to ser.nr.
0	4.060-417.0	Cover with handhold	1.000	ST	0000000000	0000000000
1	2.883-996.0	Spare part set handhold complete	1.000	ST	0000000000	0000000000
3	5.060-730.0	Cover hose reel	1.000	ST	0000000000	0000000000
4	5.776-003.0	Hose reel HD	1.000	ST	0000000000	0000000000



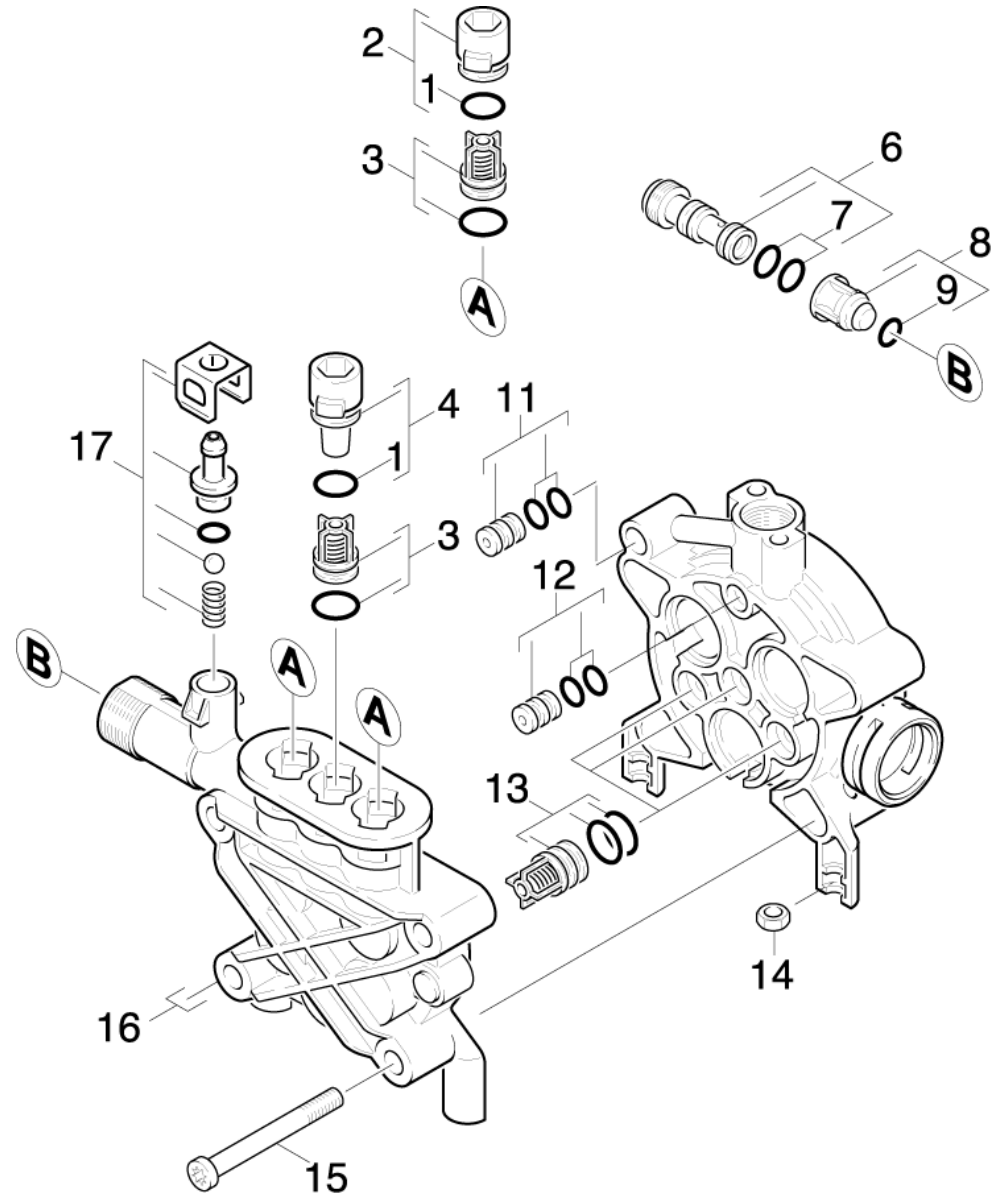
14 Cable vat (0.102-602.0)

Pos	Material #	Name	Qty.	Unit	from ser.nr.	up to ser.nr.
1	5.605-260.0	Housing cable vat	1.000	ST	0000000000	0000000000
3	6.647-528.0	Cable with plug *DI	1.000	ST	0000000000	0000000000
4	5.605-258.0	Cover cable vat	1.000	ST	0000000000	0000000000
5	6.373-743.0	Clip	2.000	ST	0000000000	0000000000



20 Pump set (0.107-594.0)

Pos	Material #	Name	Qty.	Unit	from ser.nr.	up to ser.nr.
21	0.107-595.0	Cylinder head	1.000	ST	0000000000	0000000000
22	0.107-596.0	Piston	1.000	ST	0000000000	0000000000

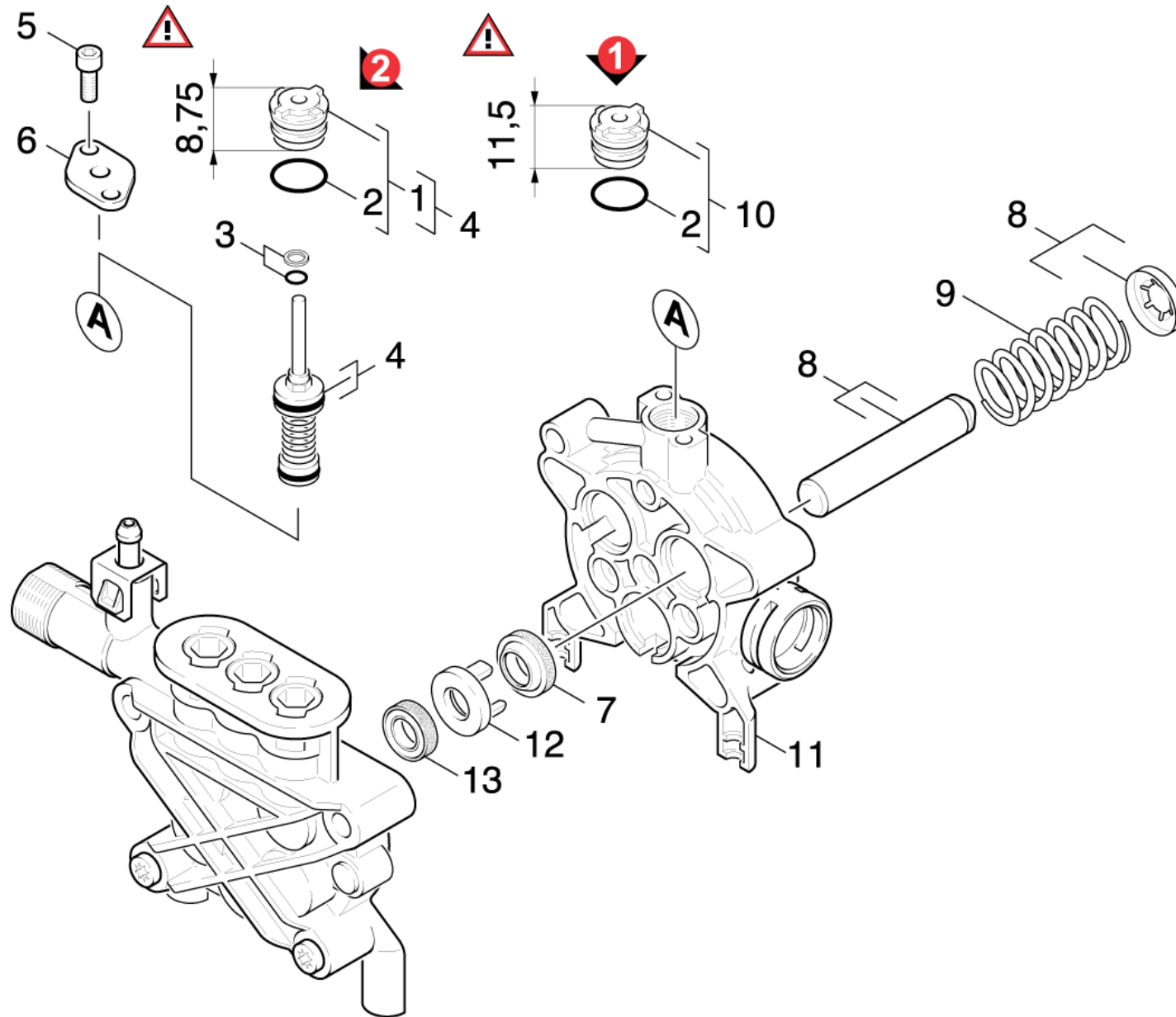


21 Cylinder head (0.107-595.0)

ET/VT (spare/wear parts)	Pos	Material #	Name	Qty.	Unit	from ser.nr.	up to ser.nr.
X	1	6.363-273.0	O-Ring seal 11,0 x 2,0	3.000	ST	0000000000	0000000000
	2	4.132-010.0	Valve plug complete	2.000	ST	0000000000	0000000000
X-X	3	2.884-873.0	Valve (3 Stueck)	1.000	ST	0000000000	0000000000
	4	4.132-011.0	Valve plug complete	1.000	ST	0000000000	0000000000
X	6	4.769-034.0	Nozzle insert only for replacement	1.000	ST	0000000000	0000000000
X-X	7	6.362-384.0	O-Ring seal 9,0 x 1,5	2.000	ST	0000000000	0000000000
X-X	8	4.584-022.0	Valve pin complete	1.000	ST	0000000000	0000000000
X-X	9	6.362-851.0	O-Ring seal 4 x 2 NBR 90	1.000	ST	0000000000	0000000000
	11	4.030-070.0	Throttle complete	1.000	ST	0000000000	0000000000
	12	4.030-125.0	Joining piece only for replacement	1.000	ST	0000000000	0000000000
X-X	13	2.884-877.0	Valve (3 Stueck)	1.000	ST	0000000000	0000000000
	14	7.311-003.0	Hexagon nut M6 -8-A2E ISO 4032	2.000	ST	0000000000	0000000000
	15	7.306-154.0	Screw M8x75 -8.8-A3R (In6Rd)	4.000	ST	0000000000	0000000000
	16	5.550-331.0	Cylinder head	1.000	ST	0000000000	0000000000
	17	2.883-258.0	Spare part set neutrally	1.000	ST	0000000000	0000000000
	100	2.883-883.0	PUMP SET COMPLETE	1.000	ST	0000000000	0000000000

100 PUMP SET COMPLETE (2.883-883.0)

ET/VT (spare/wear parts)	Pos	Material #	Name	Qty.	Unit
	10	4.030-045.0	Joining piece only for replacement	1.000	ST
	20	4.030-069.0	Moulded part complete only for replaceme	1.000	ST
	30	4.030-070.0	Throttle complete	1.000	ST
	40	4.132-010.0	Valve plug complete	2.000	ST
	50	4.132-011.0	Valve plug complete	1.000	ST
X	60	4.580-307.0	Pressure valve complete	3.000	ST
X-X	70	4.580-308.0	Suction valve complete	3.000	ST
	80	4.580-361.0	Excess-current complete only for replace	1.000	ST
	90	5.063-755.0	Cover excess-current	1.000	ST
X	100	5.115-674.0	Washer	3.000	ST
	110	6.288-088.0	Grease Molikote 55 M	1.000	ST
	120	6.303-194.0	Self-tapping screw M6X16-8.8-A2E	2.000	ST
	130	6.303-265.0	Self-tapping screw M6x20	2.000	ST
X	140	6.362-852.0	O-Ring seal complete 3,69	1.000	ST
X-X	150	6.365-394.0	Grooved ring	3.000	ST
	160	7.311-003.0	Hexagon nut M6 -8-A2E ISO 4032	2.000	ST



22 Piston (0.107-596.0)

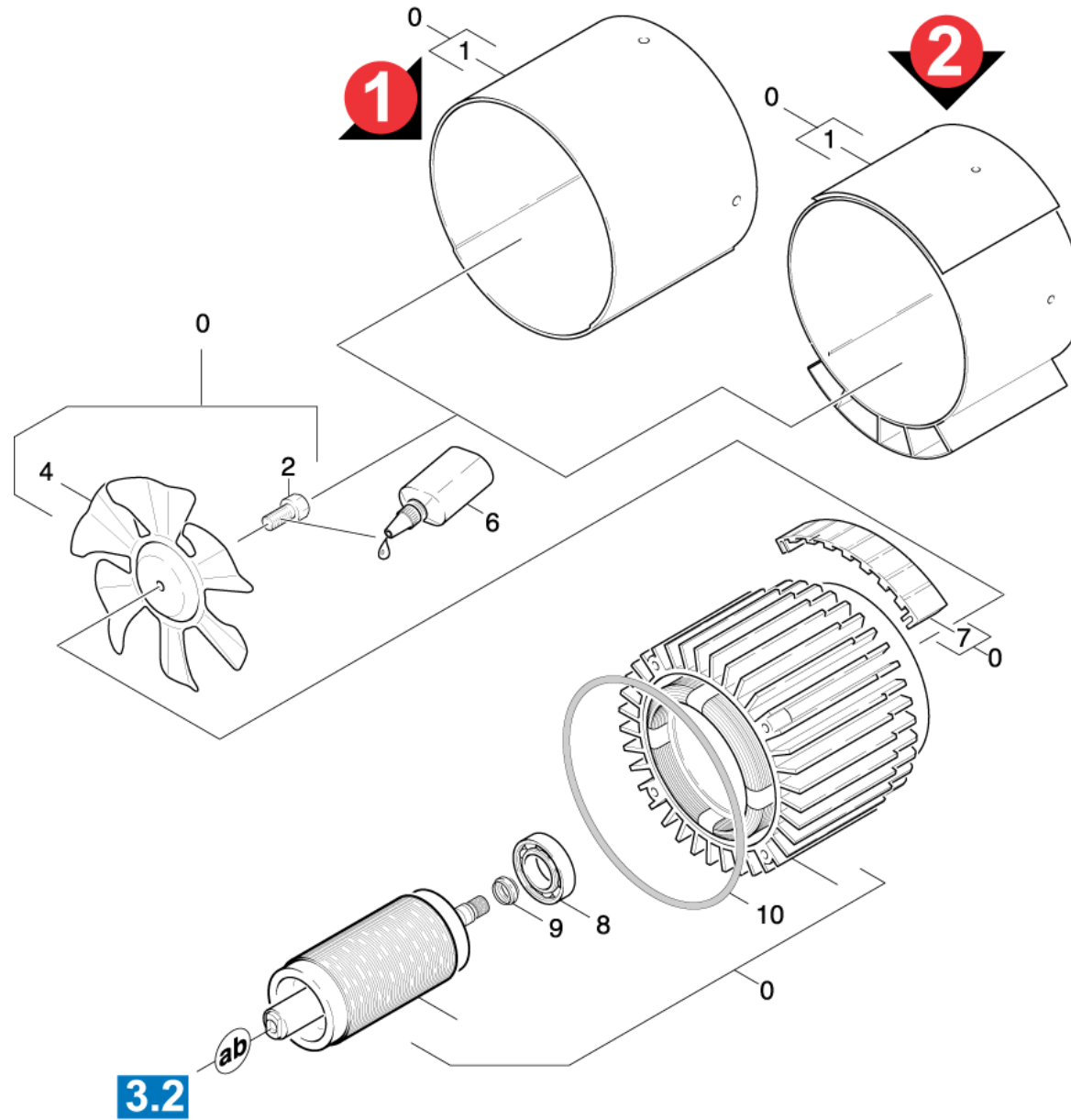
ET/VT (spare/wear parts)	Pos	Material #	Name	Qty.	Unit	from ser.nr.	up to ser.nr.	var. information
	1	4.030-123.0	Moulded part complete only for replaceme	1.000	ST	0000000000	0000000000	VERSION 2
X-X	2	6.362-169.0	O-Ring seal 12,0 X 2,0	1.000	ST	0000000000	0000000000	
X	3	6.362-852.0	O-Ring seal complete 3,69	1.000	ST	0000000000	0000000000	
X-X	4	4.580-666.0	Excess-current complete D5,7 PUR	1.000	ST	0000000000	0000000000	
	5	7.303-048.0	Screw M6x20 -St-R3R (In6Rd)	2.000	ST	0000000000	0000000000	
	6	5.064-127.0	Cover	1.000	ST	0000000000	0000000000	
X-X	7	6.365-393.0	Oil sealing 12x20x4/6	3.000	ST	0000000000	0000000000	
	8	4.553-173.0	Piston complete	1.000	ST	0000000000	0000000000	
X-X	9	5.332-391.0	Pressure spring	3.000	ST	0000000000	0000000000	
	10	4.030-069.0	Moulded part complete only for replaceme	1.000	ST	0000000000	0000000000	VERSION 1
	11	5.060-733.0	Piston guidance	1.000	ST	0000000000	0000000000	
X	12	5.115-674.0	Washer	3.000	ST	0000000000	0000000000	
X-X	13	6.365-394.0	Grooved ring	1.000	ST	0000000000	0000000000	
	100	2.883-883.0	PUMP SET COMPLETE	1.000	ST			

100 PUMP SET COMPLETE (2.883-883.0)

ET/VT (spare/wear parts)	Pos	Material #	Name	Qty.	Unit
	10	4.030-045.0	Joining piece only for replacement	1.000	ST
	20	4.030-069.0	Moulded part complete only for replaceme	1.000	ST
	30	4.030-070.0	Throttle complete	1.000	ST
	40	4.132-010.0	Valve plug complete	2.000	ST
	50	4.132-011.0	Valve plug complete	1.000	ST
X	60	4.580-307.0	Pressure valve complete	3.000	ST
X-X	70	4.580-308.0	Suction valve complete	3.000	ST
	80	4.580-361.0	Excess-current complete only for replace	1.000	ST
	90	5.063-755.0	Cover excess-current	1.000	ST
X	100	5.115-674.0	Washer	3.000	ST
	110	6.288-088.0	Grease Molikote 55 M	1.000	ST
	120	6.303-194.0	Self-tapping screw M6X16-8.8-A2E	2.000	ST
	130	6.303-265.0	Self-tapping screw M6x20	2.000	ST
X	140	6.362-852.0	O-Ring seal complete 3,69	1.000	ST
X-X	150	6.365-394.0	Grooved ring	3.000	ST
	160	7.311-003.0	Hexagon nut M6 -8-A2E ISO 4032	2.000	ST

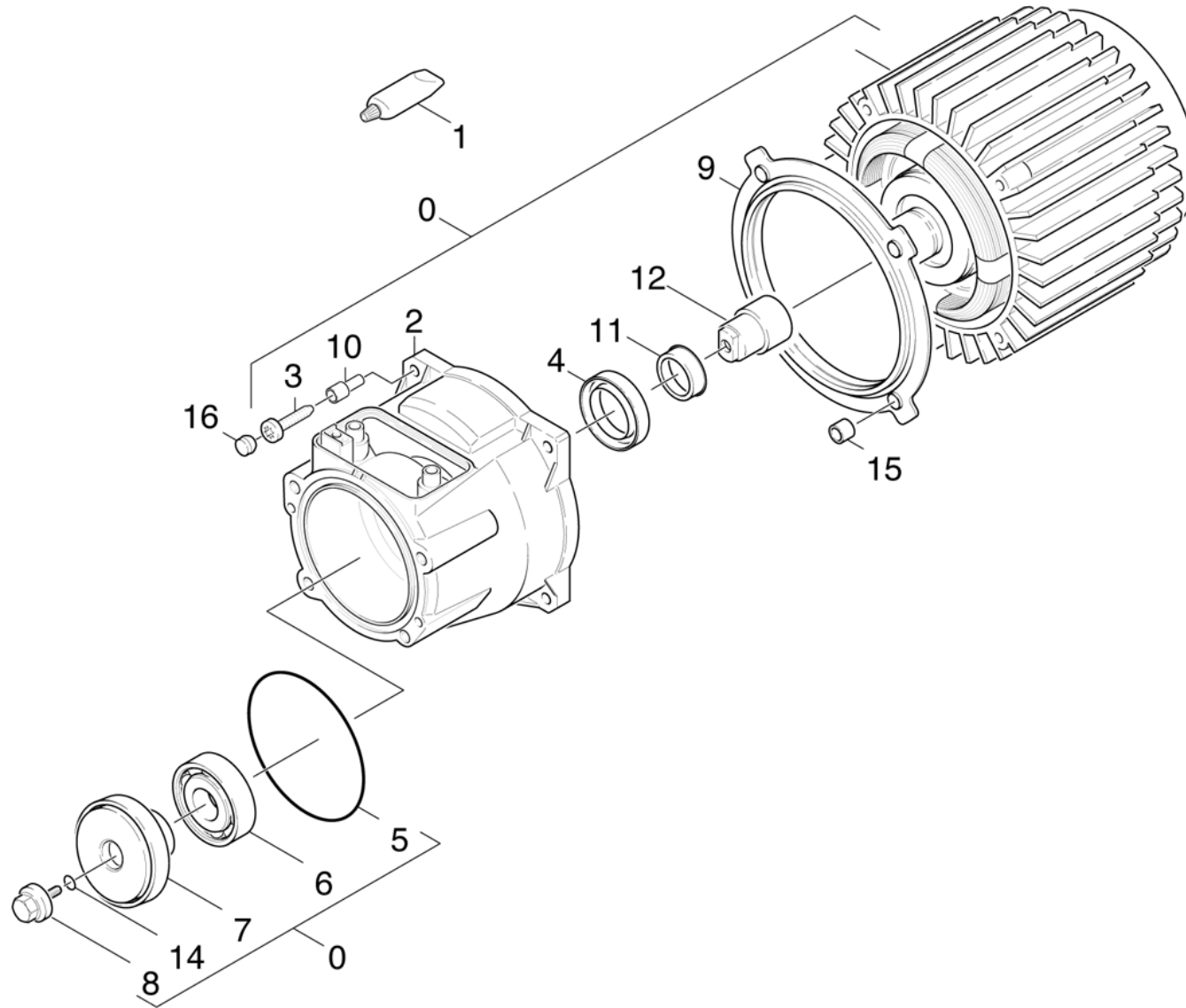
30 Motor (0.112-508.0)

Pos	Material #	Name	Qty.	Unit	from ser.nr.	up to ser.nr.
31	0.112-509.0	Ventilation	1.000	ST	0000000000	0000000000
32	0.112-510.0	Transmission	1.000	ST	0000000000	0000000000



31 Ventilation (0.112-509.0)

Pos	Material #	Name	Qty.	Unit	from ser.nr.	up to ser.nr.	var. information
0	4.623-472.0	Motor complete only for replacement DI	1.000	ST	0000000000	0000000000	VERSION 2
0	4.623-464.0	Motor complete only for replacement DI	1.000	ST	0000000000	0000000000	VERSION 1
1	5.692-052.0	AIR CIRCULATION	1.000	ST	0000000000	0000000000	VERSION 2
1	5.692-037.0	Air circulation	1.000	ST	0000000000	0000000000	VERSION 1
2	9.086-170.0	Hexagonal head screw M 8x16	1.000	ST	0000000000	0000000000	
4	5.600-061.0	Blower wheel	1.000	ST	0000000000	0000000000	
6	6.869-066.0	Metal bonding agent 25ML	1.000	ST	0000000000	0000000000	
8	7.401-128.0	Ball bearing 6202-2RS -Wälzl.St DIN 625	1.000	ST	0000000000	0000000000	
9	6.343-218.0	Tolerance ring 15x6	1.000	ST	0000000000	0000000000	
10	5.363-590.0	Joint ring	1.000	ST	0000000000	0000000000	

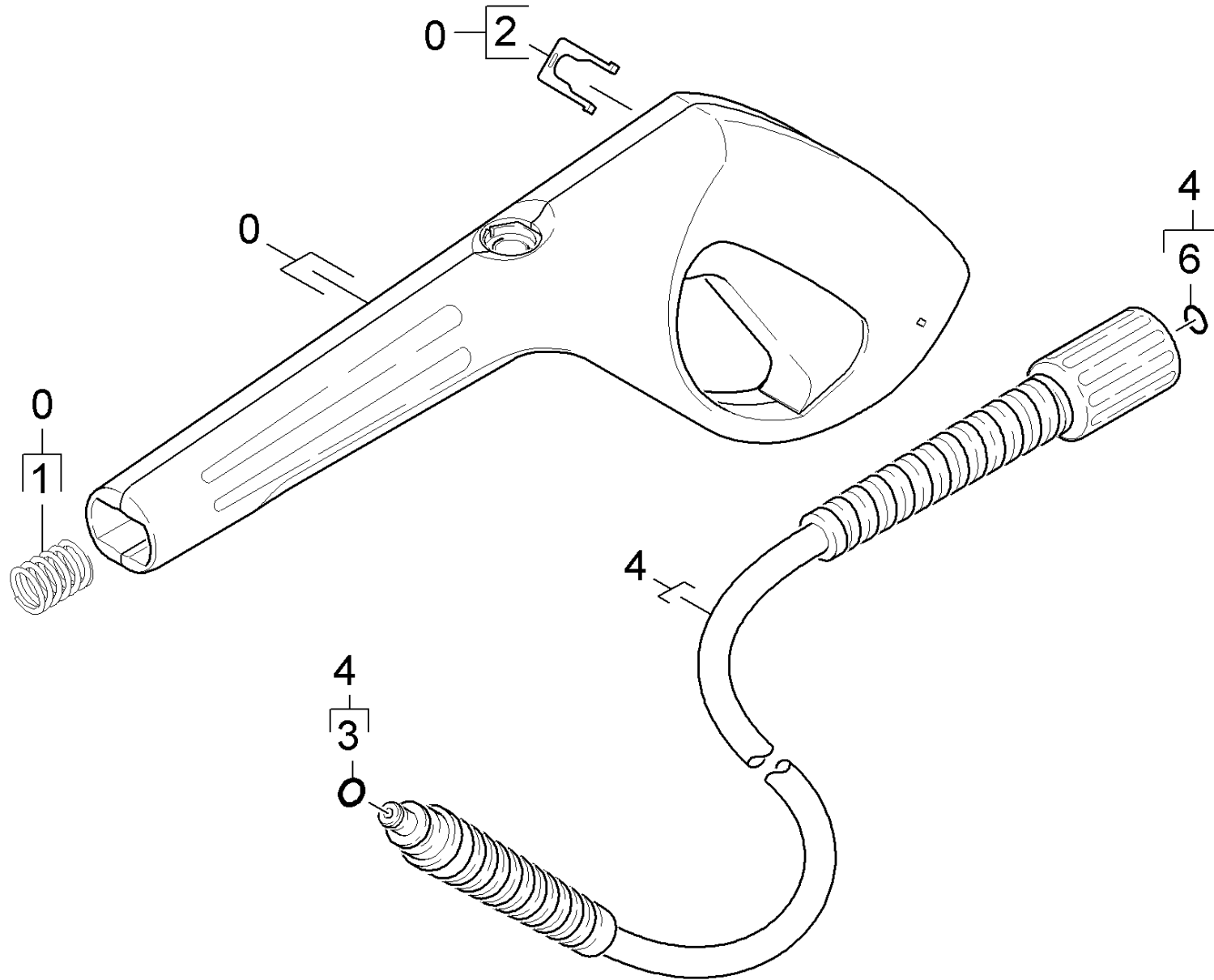


32 Transmission (0.112-510.0)

ET/VT (spare/wear parts)	Pos	Material #	Name	Qty.	Unit	from ser.nr.	up to ser.nr.	var. information
	0	4.623-464.0	Motor complete only for replacement DI	1.000	ST	0000000000	0000000000	VERSION 1
	0	4.623-472.0	Motor complete only for replacement DI	1.000	ST	0000000000	0000000000	VERSION 2
	1	6.964-092.0	Viscous oil 50ml	1.000	ST	0000000000	0000000000	
	2	5.093-092.0	Bearing plate A-SEITE	1.000	ST	0000000000	0000000000	
	3	6.303-214.0	Self-tapping screw M 5x30-ST-A2K (In6Rd)	4.000	ST	0000000000	0000000000	
	4	7.367-018.0	Radial shaft seal ring A26x37x7 -NBR DI	1.000	ST	0000000000	0000000000	
X	5	6.362-471.0	O-Ring seal 80,0 X 3,0 -NBR 70	1.000	ST	0000000000	0000000000	
	6	7.401-155.0	Ball bearing 6304-WAELZLAGERST DIN 625	1.000	ST	0000000000	0000000000	
	7	6.401-221.0	Wobble plate	1.000	ST	0000000000	0000000000	
	8	5.305-249.0	Screw	1.000	ST	0000000000	0000000000	
	9	5.031-315.0	Ring insulating	1.000	ST	0000000000	0000000000	
	10	5.031-097.0	Sleeve insulating	4.000	ST	0000000000	0000000000	
	11	5.112-536.0	Bushing	1.000	ST	0000000000	0000000000	
	12	5.112-534.0	Sleeve insulating	1.000	ST	0000000000	0000000000	
X-X	14	6.362-383.0	O-Ring seal 6,0 X 2,0	1.000	ST	0000000000	0000000000	
	15	6.347-093.0	Sleeve 8x1	4.000	ST	0000000000	0000000000	
	16	6.368-284.0	Plug	4.000	ST	0000000000	0000000000	

40 Accessories (0.147-879.0)

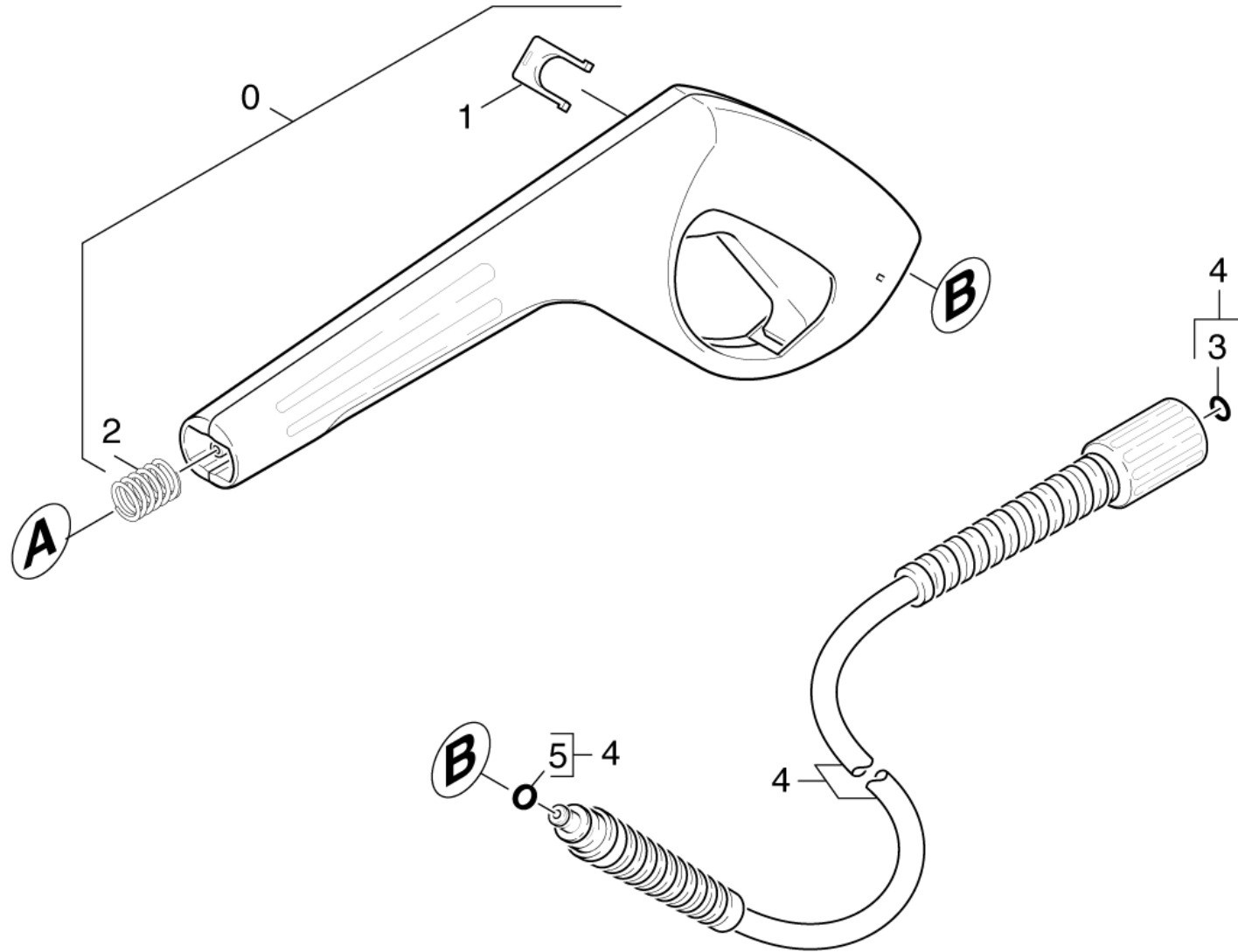
Pos	Material #	Name	Qty.	Unit	from ser.nr.	up to ser.nr.	var. information
41	0.148-121.0	Hand trigger gun	1.000	ST	0000000000	0000000000	VERSION 1
42	0.105-842.0	Hand trigger gun	1.000	ST			VERSION 2
43	0.110-015.0	Hand trigger gun	1.000	ST			VERSION 3
44	0.147-880.0	Jet pipe	1.000	ST	0000000000	0000000000	



Hand trigger gun (0.148-121.0)

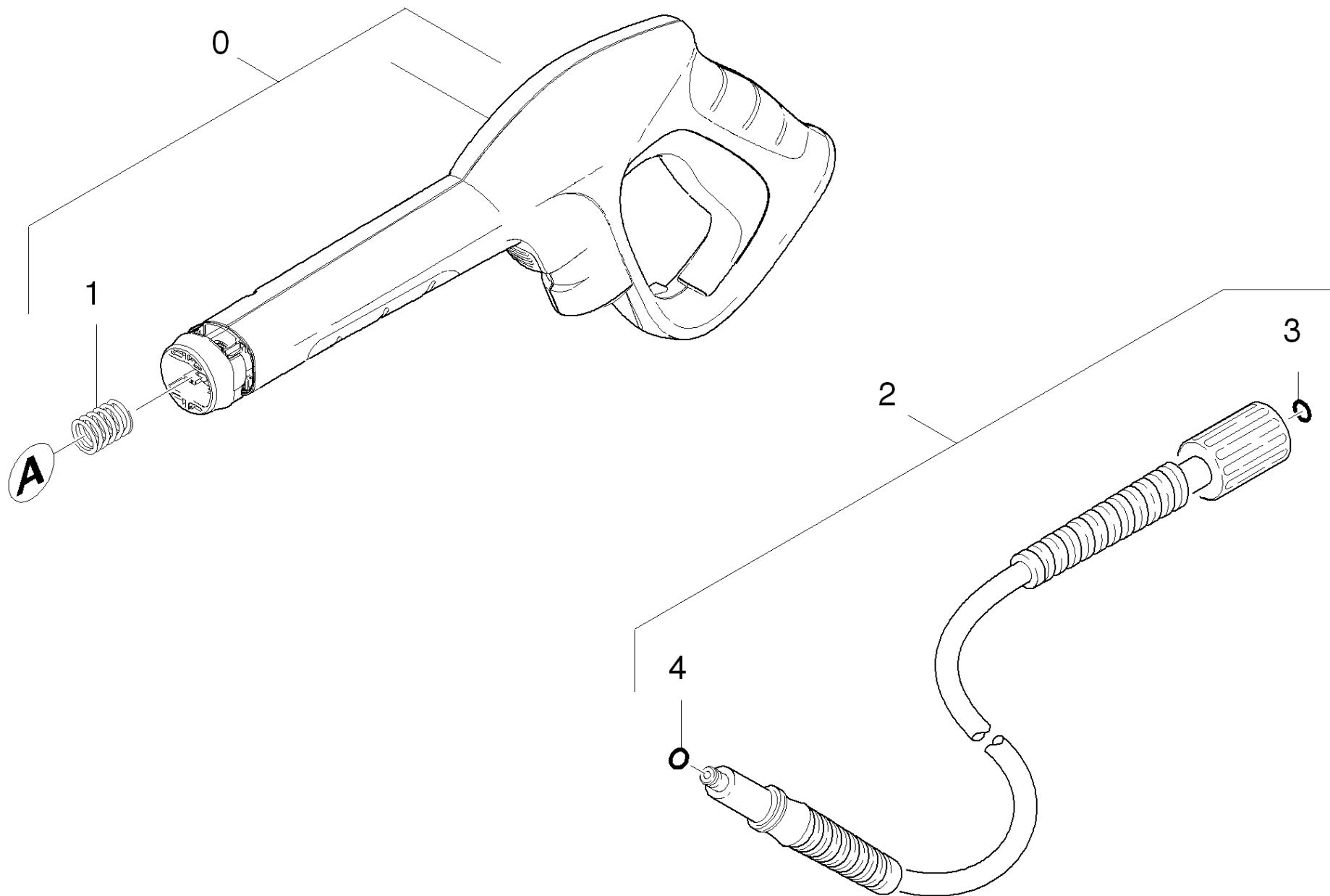
Material #	Name
-------------------	-------------

6.362-957.0	O-Ring seal 10,0 X 2,0-EPDM 85-90
-------------	-----------------------------------



42 Hand trigger gun (0.105-842.0)

ET/VT (spare/wear parts)	Pos	Material #	Name	Qty.	Unit	from ser.nr.	up to ser.nr.
	0	7.777-999.0	Stockpiling discontinued	1.000	ST	0000000000	0000000000
X-X	1	5.037-140.0	Clamp	1.000	ST	0000000000	0000000000
	2	5.332-464.0	Pressure spring	1.000	ST	0000000000	0000000000
X-X	3	2.880-154.0	O-Ring kit	1.000	ST	0000000000	0000000000
X-X	4	6.390-463.0	High pressure hose 9/16MPa	1.000	ST	0000000000	0000000000
X-X	5	6.363-198.0	O-Ring seal 6x2 90 shore PUR	1.000	ST	0000000000	0000000000

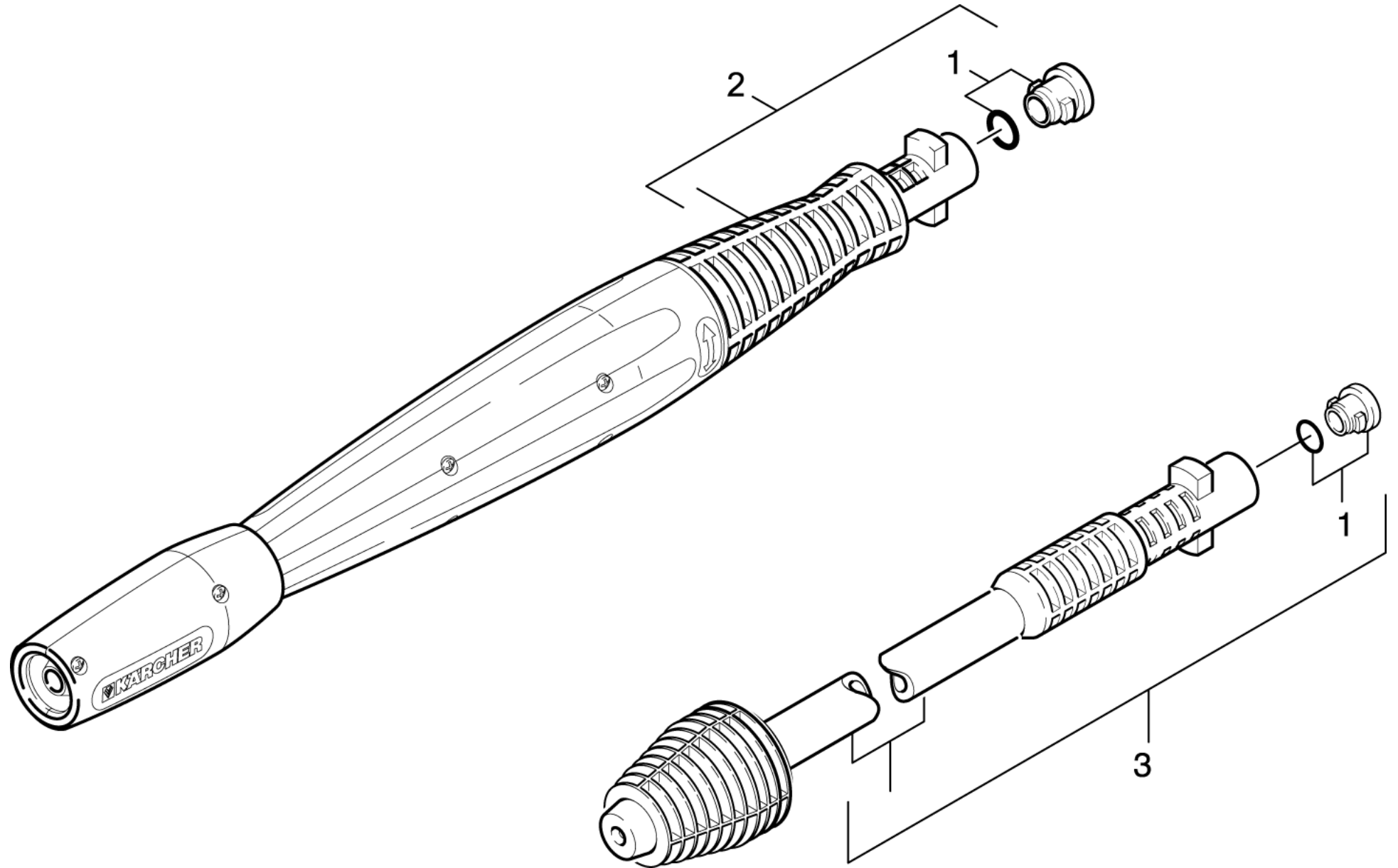


43 Hand trigger gun (0.110-015.0)

ET/VT (spare/wear parts)	Pos	Material #	Name	Qty.	Unit
X-X	0	2.642-172.0	Pistol best 2K verpackt	1.000	ST
	1	5.332-464.0	Pressure spring	1.000	ST
X-X	2	2.641-706.0	High pressure hose 16MPa/9m 60°C, verp.	1.000	ST
X-X	3	2.880-296.0	Spare part set O-Ring seal 5x	1.000	ST
X-X	4	6.363-410.0	O-Ring seal 5,7x1,78 NBR 90Shore	1.000	ST

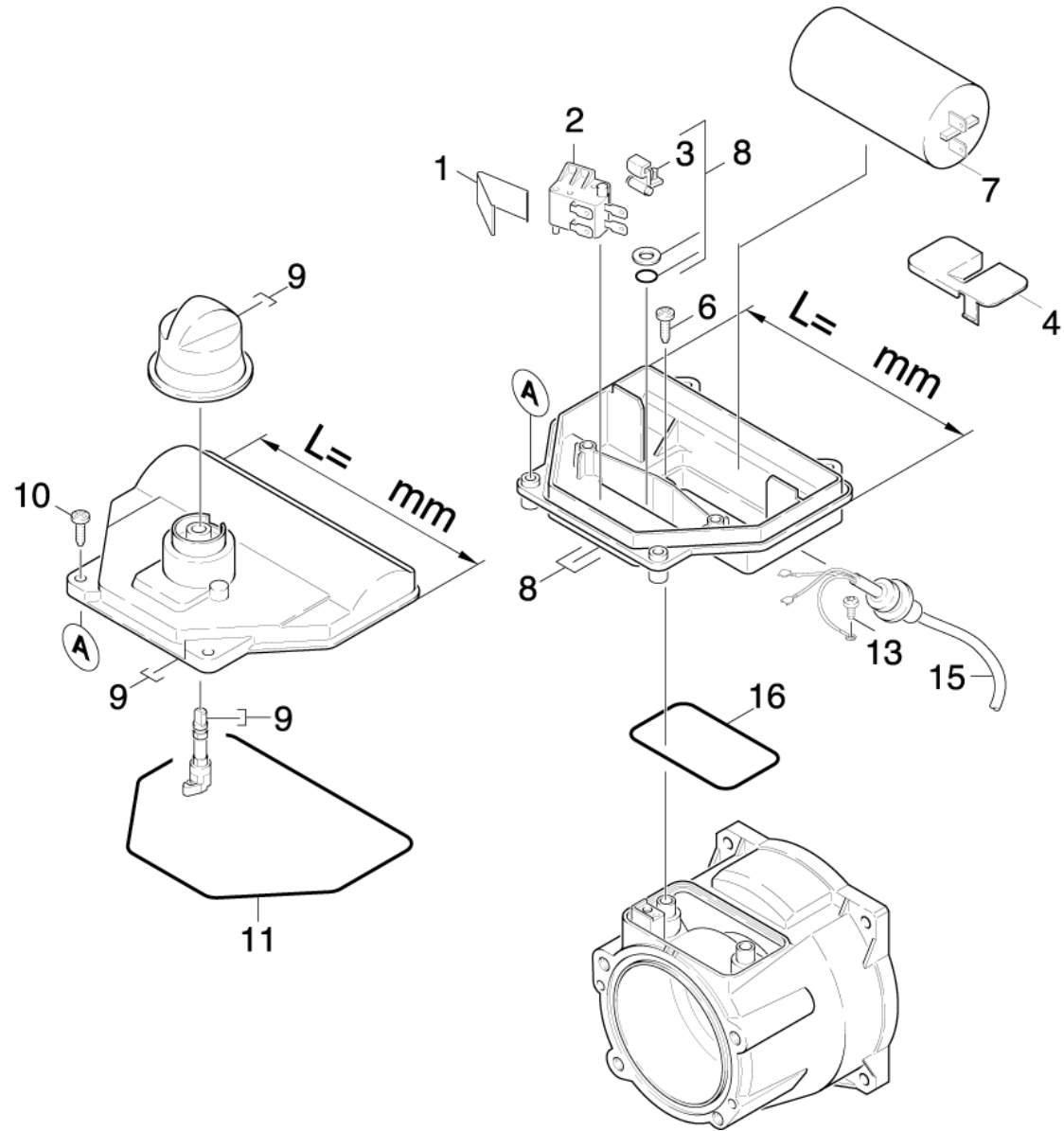
3 Spare part set O-Ring seal 5x (2.880-296.0)

Pos	Material #	Name	Qty.	Unit
10	6.362-957.0	O-Ring seal 10,0 X 2,0-EPDM 85-90	5.000	ST



44 Jet pipe (0.147-880.0)

ET/VT (spare/wear parts)	Pos	Material #	Name	Qty.	Unit	from ser.nr.	up to ser.nr.
X-X	1	2.640-729.0	O-Ring seal set	4.000	ST	0000000000	0000000000
	2	4.760-527.0	VPS K5 0287	1.000	ST	0000000000	0000000000
	3	4.764-211.0	Dirt blaster 0295 St	1.000	ST	0000000000	0000000000



50 Electric control box (0.126-973.0)

ET/VT (spare/wear parts)	Pos	Material #	Name	Qty.	Unit	from ser.nr.	up to ser.nr.	var. information	Footnote text
	1	5.337-027.0	Plate spring	1.000	ST	0000000000	0000000000		
X-X	2	6.631-946.0	Micro switch	1.000	ST	0000000000	0000000000		
	3	4.047-003.0	Rocker switch complete	1.000	ST	0000000000	0000000000		
	4	5.031-312.0	Covering cap	1.000	ST	0000000000	0000000000		
	6	7.303-048.0	Screw M6x20 -St-R3R (In6Rd)	2.000	ST	0000000000	0000000000		
X	7	6.661-237.0	Capacitor 70µF	1.000	ST	0000000000	0000000000		
	8	4.800-852.0	Electric box complete	1.000	ST	0000000000	0000000000	L=138MM	VERSION 2
	8	4.800-846.0	Electric box complete	1.000	ST	0000000000	0000000000	L=158MM	VERSION 1
	9	4.063-788.0	Cover electric box only for replacement	1.000	ST	0000000000	0000000000	L=138MM	VERSION 2
	9	4.063-667.0	Cover electric box only for replacement	1.000	ST	0000000000	0000000000	L=158MM	VERSION 1
	10	6.303-125.0	Screw 5x20-Sonder In6Rd+Spitze	4.000	ST	0000000000	0000000000		
	11	6.273-194.0	Cord cellular rubber	1.000	ST	0000000000	0000000000		TO ORDER AS CUT GOODS
	13	7.303-031.0	Screw M4x10 -St-P2R (In6Rd)	1.000	ST	0000000000	0000000000		
	15	6.647-528.0	Cable with plug *DI	1.000	ST	0000000000	0000000000		
	16	6.362-887.0	O-Ring seal 65,0 X 2,5	1.000	ST	0000000000	0000000000		