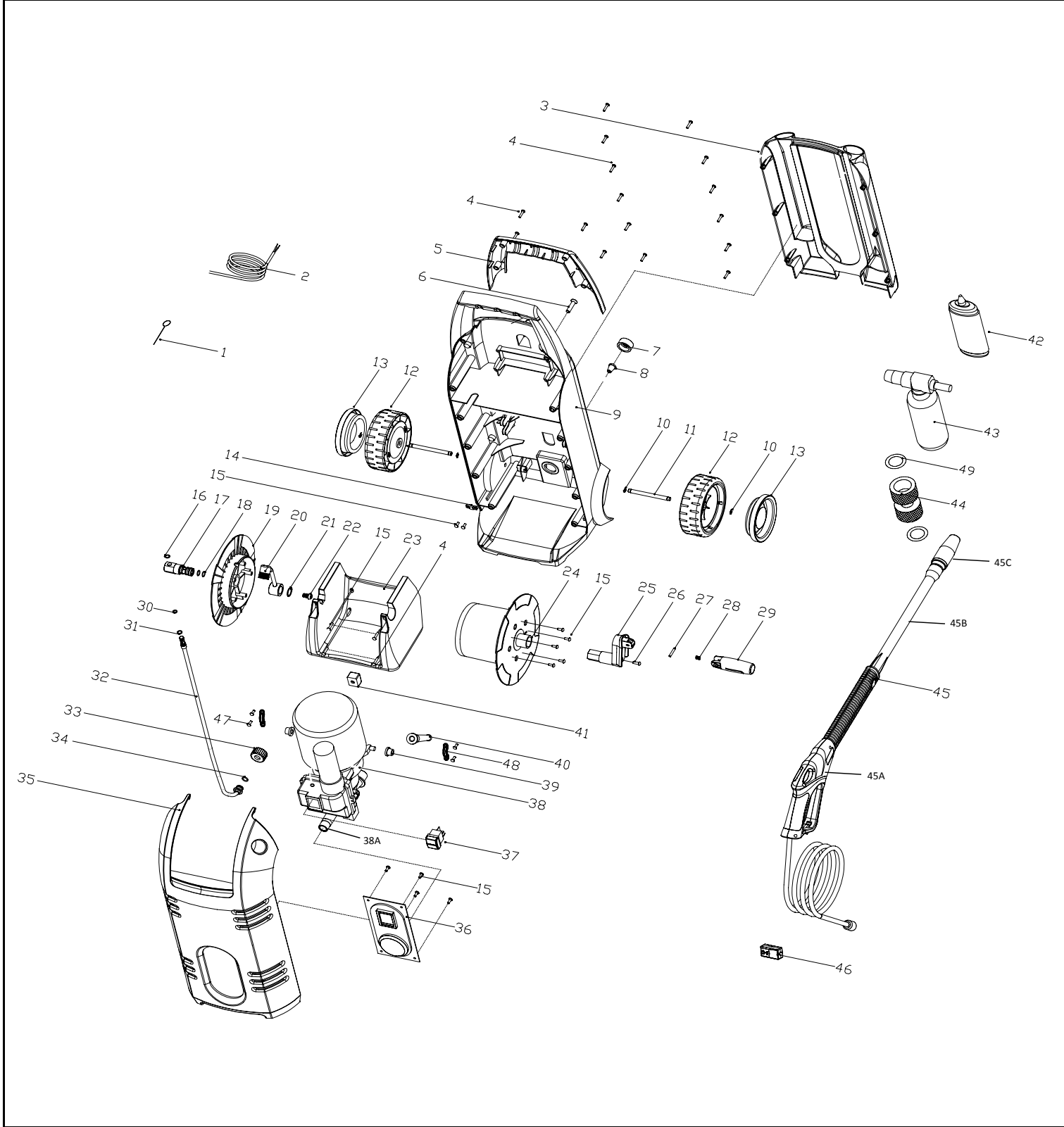




SERVICE SPARE PARTS LIST

SPECIFY MODEL NO. WHEN ORDERING PARTS		DATE	REVISED DATE
High Pressure Washer		11/23/2007	11/23/2007
MODEL NO.	FH180A		V2



**High Pressure Washer
FH180A**

PARTS LIST

8/11/2009

No.	Parts No.	Description	Q	P Code
1	6197-160A02	CLEANING PROBE	1	140
2	7011-170A01	POWER CORD	1	140
3	7123-170A01	TOOL STORAGE	1	140
4	6SDABB04-20	SCREW	18	140
5	6068-160A01	HANDLE	1	140
6	7SVAB-08-35	SCREW	1	140
7	7154-140A04	INLET COVER	1	140
8	7183-140A02	FILTER	1	140
9	7003-170A02	HOUSING, AFTER	1	140
10	6080-160A01	SPRING	4	140
11	7177-170A01	WHEEL SHAFT	2	140
12	6137-160A01	WHEEL	2	140
13	6017-BQ0103	WHEEL COVER	2	140
14	7043-140A01	CORD CLAMP	1	140
15	6SDABB04-12	SCREW	13	140
16	6CC-08	C RING	1	140
17	7081-170A01	CONNECTOR	1	140
18	6076-160A11	RUBBER PLUG	2	140
19	6122-160A02	TURNTABLE (L)	1	140
20	7228-170C01	JOINT ASS'Y	1	140
21	6CC-18	C RING	1	140
22	6SDACM08-13	SCRE	1	140
23	6072-160A01	BASE	1	140
24	6122-160A01	TURNTABLE (R)	1	140
25	6190-160A01	ROCKER-BAR	1	140
26	6SDABB05-15	SCREW	1	140
27	6PC04-25	PIN	1	140
28	6024-160A01	SPRING	1	140
29	6196-160A01	HANDLE	1	140
30	6076-160A05	RUBBER PLUG	1	140
31	6076-160A04	RUBBER PLUG	1	140
32	7228-170C02	JOINT ASS'Y	1	140
33	6105-160A01	COVER, OUTPUT WATER	1	140
34	7076-170A01	RUBBER PLUG	1	140

35	7003-170A01	HOUSING, FRONT	1	140
36	6043-160A04	FACEPLATE	1	140
37	7022-140A04	SWITCH	1	140
38	7228-180A03	MOTOR & HIGH PRESSURE PUMP ASS'Y	1	140
38A	7200-140A02	WATER INLET	1	140
39	7014-170A01	STAND, MOTOR	2	2
40	6059-855001	CORD GUARD	1	1
41	6014-160A01	PLASTIC SPACER	1	1
42	7229-AT1401	GLUE	1	1
43	7228-140C03	WASHING JAR ASS'Y	1	1
44	7154-180A01	COUPLER	1	1
45	7228-180B01	WASH MACHINE HAND ASS'Y, 6M	1	1
45A	7196-180B01	HOSE TTIGGER ASS'Y	1	1
45B	7200-140D55	WAND	1	1
45C	7200-140D53	NOZZLE	1	1
46	7247-180A02	CIRCUIT-BREAKER	1	1
47	7SLABB04-16	SCREW	4	4
48	7158-180001	PLATE	2	2
49	7076-180001	WASHER	2	2