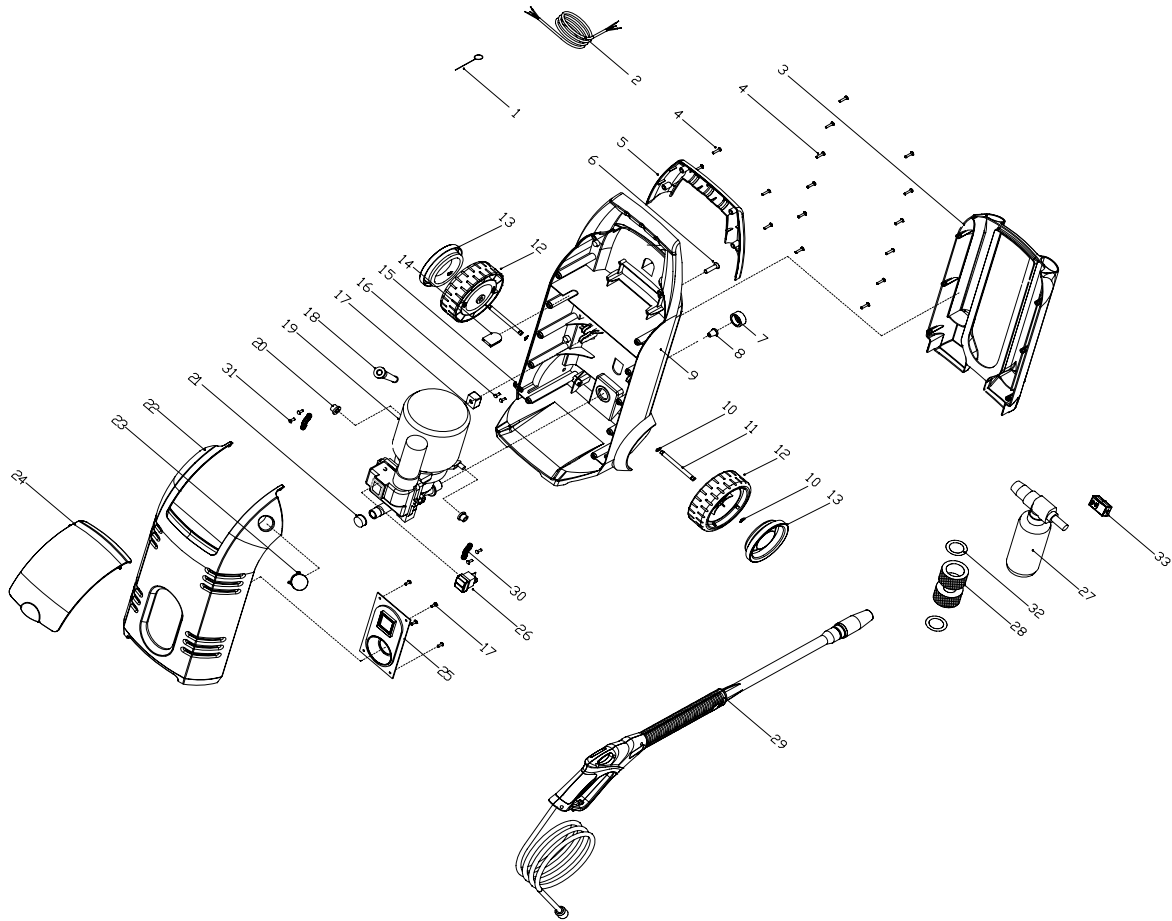




SERVICE SPARE PARTS LIST

SPECIFY MODEL NO. WHEN ORDERING PARTS		DATE	REVISED DATE
High Pressure Washer		11/23/2007	11/23/2007
MODEL NO.	FH180B		V1



**High Pressure Washer
FH180B**

PARTS LIST

6/2/2009

No.	Parts No.	Description	Q	P Code
1	6197-160A02	CLEANING PROBE	1	140
2	7011-170A01	POWER CORD	1	140
3	7123-170A01	TOOL STORAGE	1	140
4	6SDABB04-20	SCREW	16	140
5	6068-160A01	HANDLE	1	140
6	7SVAB-08-35	SCREW	1	140
7	7154-140A04	INLET COVER	1	140
8	7183-140A02	FILTER	1	140
9	7003-170A02	HOUSING, AFTER	1	140
10	6080-160A01	SPRING	4	140
11	7177-170A01	WHEEL SHAFT	2	140
12	6137-160A01	WHEEL	2	140
13	6017-BQ0103	WHEEL COVER	2	140
14	6013-160B01	RUBBER PLUG	1	140
15	7043-140A01	CORD CLAMP	1	140
16	6SDABB04-12	SCREW	6	140
17	6014-160A01	PLASTIC SPACER	1	140
18	6059-855001	CORD GUARD	1	140
19	7228-180A01	MOTOR & HIGH PRESSURE PUMP ASS'Y	1	140
19A	7200-140A02	WATER INLET	1	140
20	7014-170A01	STAND, MOTOR	2	140
21	7067-140A05	COVER, OUTPUT WATER	1	140
22	7003-170A01	HOUSING, FRONT	1	140
23	6056-160B01	KNOB, FRONT HOUSING	1	140
24	6107-160B01	COVER	1	140
25	6043-160A03	FACEPLATE	1	140
26	7022-140A04	SWITCH	1	140
27	7228-140C03	WASHING JAR ASS'Y	1	140
28	7154-180A01	COUPLER	1	140
29	7228-180B01	WASH MANCHINE HAND ASS'Y	1	140
29A	7196-180B01	HOSE AND TRIGGER ASS'Y	1	140
29B	7200-140D55	WAND	1	140
29C	7200-140D53	NOZZLE	1	140

30	7SLABB04-16	SCREW	4	140
31	7158-180001	PLATE	2	140
32	7076-180001	WASHER	2	140
33	7247-180A02	CIRCUIT-BREAKER	1	140