



***Performance Under Pressure***

PARTS LIST FOR  
***CA-3504-0MHB***  
(AFTER SERIAL #10168073)

|                      |                               |
|----------------------|-------------------------------|
| Engine Oil Grade:    | SAE 10W-30                    |
| Engine Oil Capacity: | 37 oz.                        |
| Pump Oil Grade:      | Mi-T-M Pump Oil #AW-4085-0016 |
| Pump Oil Capacity:   | 18.5 oz.                      |
| Nozzle Size:         | 3.5                           |

This Parts Listing has been compiled for your benefit. You can be assured your Mi-T-M Cold Water Pressure Washer was constructed and designed with quality and performance in mind using over 25 years experience in the pressure washer business. Each component has been rigorously tested to insure the highest level of acceptance.

The contents of this Parts Listing are based on the latest product information available at the time of publication. Mi-T-M reserves the right to make changes in price, color, materials, equipment, specifications or models at any time without notice.

**WARNING**

THIS IS A PROFESSIONAL HIGH PRESSURE, COLD WATER PRESSURE WASHER. CAUTION SHOULD BE OBSERVED WHEN USING OR REPAIRING THIS UNIT! READ AND FOLLOW THE SAFETY WARNINGS LISTED BELOW BEFORE ATTEMPTING ANY REPAIRS ON THIS PRESSURE WASHER!

**SAFETY WARNINGS**

1. NEVER alter or modify the equipment. Be sure any accessory items and system components being used will withstand the pressure developed. Use only genuine Mi-T-M parts for repair of your pressure washer. Failure to do so can cause hazardous operating conditions and will VOID warranty.
2. NEVER make adjustments on machinery while the unit is connected to the engine without first removing the ignition cable from the spark plug. Turning over the machinery by hand during adjustment or cleaning might start the engine and machinery with it, causing serious injury to the operator.
3. Know how to stop and bleed pressures quickly. Be thoroughly familiar with controls.
4. Before servicing the unit, turn unit off, relieve the water pressure and allow the unit to cool down. Do not make repairs while the unit is running. Service in a clean, dry, flat area. Block the wheels to prevent the unit from moving. Be especially careful to properly dispose of any flammable materials.
5. After testing the machine, DO NOT leave the pressurized unit unattended. Shut off the unit and release trapped pressure before leaving.

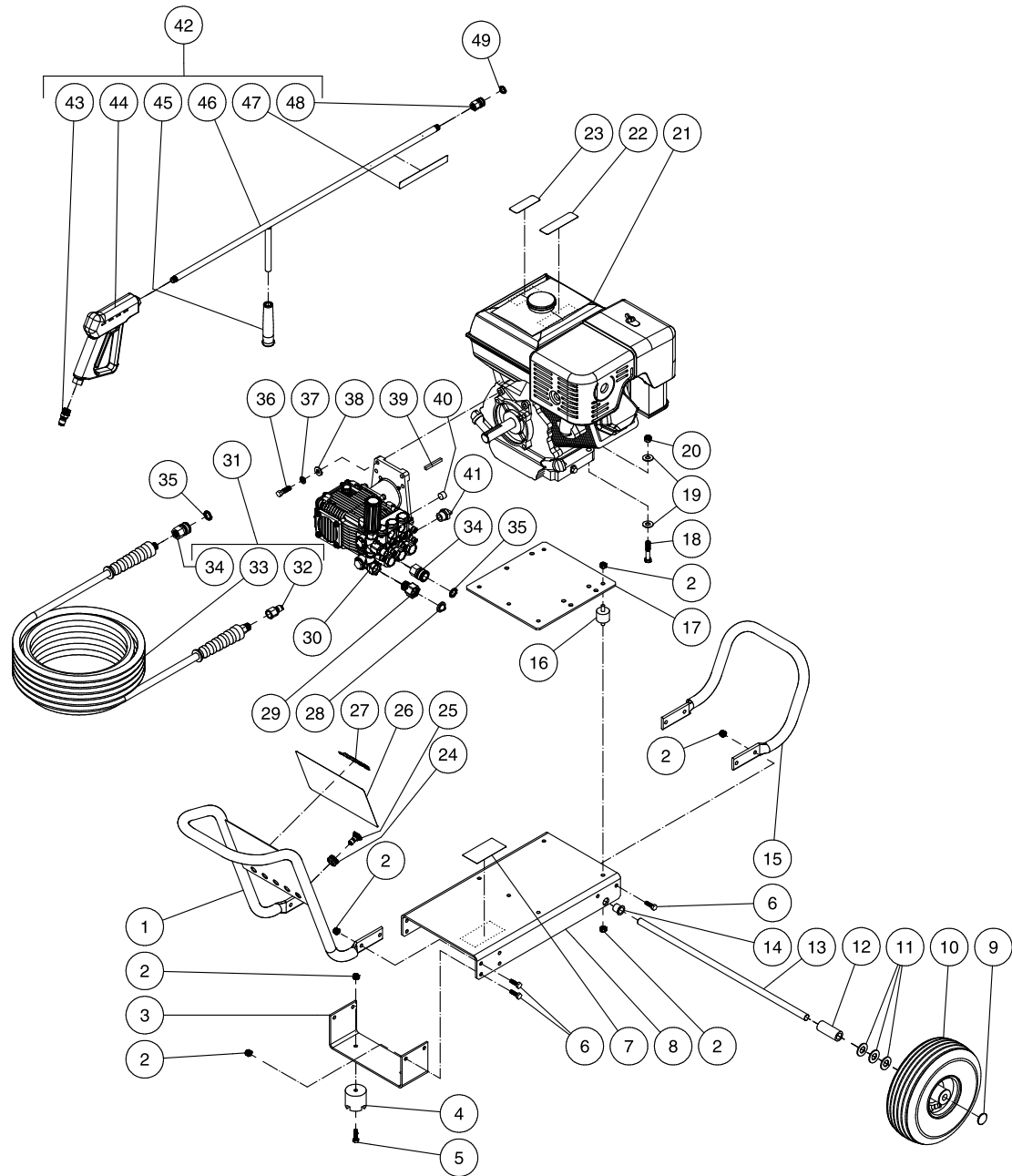
**Table of Contents**

**SPECIFICATIONS.....3**  
**FRAME ASSEMBLY FOR CA-3504-0MHB (AFTER SERIAL #10168073) .....4**  
**PUMP ASSEMBLY (3-0266) .....6**  
**UNLOADER ASSEMBLY (8-0533) .....8**  
**GUN ASSEMBLY (16-0001) .....10**

## SPECIFICATIONS

| MODEL NUMBER                           | CA-3504-0MHB                                       |
|--|--|
| <b>Operating Pressure (PSI/Bar):</b>   | 3500/241.3   |
| <b>High Pressure Nozzle:</b>           | 3.5  |
| <b>Water Volume (GPM/lpm):</b>         | 3.3/12.5   |
| <b>Engine:</b>                         | Honda  |
| Horsepower                             | 13.0   |
| Engine Type                            | 4 Stroke, Overhead Valve, Single Cylinder          |
| Oil Type                               | SAE 10W-30   |
| Oil Capacity (oz./liters)              | 37/1.1   |
| Low Oil Protection                     | Oil Alert™   |
| Fuel Type                              | Unleaded Gasoline 86 Octane Minimum                |
| Fuel Capacity (gallon/ liters)         | 1.7/6.5  |
| Starting                               | Recoil   |
| Maximum No Load RPM                    | 3600 (+/- 100) RPM                                 |
| <b>Pump:</b>                           | Direct Driven, Oil Bath, Triplex Piston            |
| Oil Type                               | Mi-T-M Pump Oil #AW-4085-0016                      |
| Oil Capacity (oz./liters)              | 18.5/6   |
| Plungers                               | Ceramic  |
| Manifold                               | Forged Brass                                       |
| Valves                                 | Stainless Steel                                    |
| Unloader                               | Adjustable   |
| Thermal Relief Valve                   | Relieves heated water during unloader bypass stage |
| <b>Unit Net Weight (lbs/Kg)</b>        | 125/57   |
| <b>Unit Shipping Weight (lbs/Kg)</b>   | 175/79.5   |
| <b>Unit Net Dimension (in/cm)</b>      | 42.5Lx23.5Wx25H/108Lx60Wx63.5H                     |
| <b>Unit Shipping Dimension (in/cm)</b> | 39.5Hx25Wx31.5H/100.5Lx63.5Wx80H                   |

# FRAME ASSEMBLY FOR CA-3504-0MHB (AFTER SERIAL #10168073)

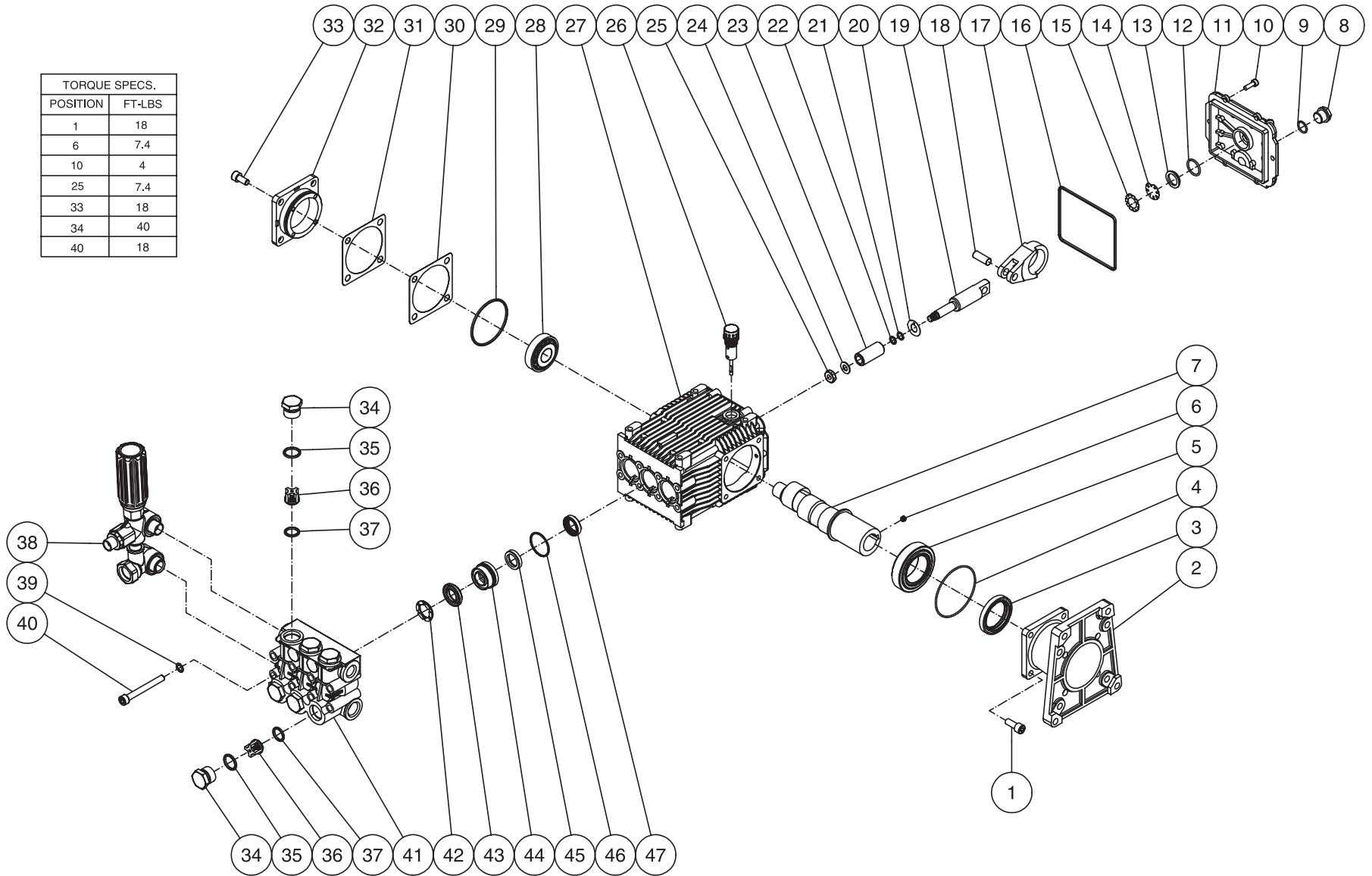


CA-3504-0MHB-020205-DLG

| FRAME ASSEMBLY FOR CA-3504-0MHB (AFTER SERIAL #10168073) |   |          |      |                                 |   |          |      |
|--|---|----------|------|---------------------------------|---|----------|------|
| REF. #   | DESCRIPTION                                 | PART #   | QTY. | REF. #                          | DESCRIPTION                                     | PART #   | QTY. |
| 1  | Front Handle Assembly                       | 7-0182   | 1    | 26                              | Decal- Warning/Caution/Operation (See 34-9014)  | N/A Sep. | 1    |
| 2  | Locknut                                     | 30-0157  | 22   | 27                              | Decal- 3500 Die Cut                             | 34-0909  | 1    |
| 3  | Support Bracket                             | 56-0054  | 1    | 28                              | Inlet Filter Washer w/ Screen                   | 19-0001  | 1    |
| 4  | Isolator                                    | 14-0008  | 2    | 29                              | Garden Hose Swivel                              | 23-0095  | 1    |
| 5  | Bolt  | 27-0068  | 2    | 30                              | Pump  | 3-0266   | 1    |
| 6  | Bolt  | 27-0067  | 12   | 31                              | Pressure Hose Assembly (Inc. 32-34)             | 851-0338 | 1    |
| 7  | Decal- Data Plate                           | N/A      | 1    | 32                              | Quick Connect Plug                              | 17-0006  | 1    |
| 8  | Baseplate                                   | 5-0207   | 1    | 33                              | Hose  | 15-0209  | 1    |
| 9  | Hub Cap                                     | 33-0018  | 2    | 34                              | Quick Connect Socket                            | 17-0004  | 2    |
| 10   | Wheel                                       | 14-0017  | 2    | 35                              | O-ring  | 25-0123  | 2    |
| 11   | Washer                                      | 28-0008  | 6    | 36                              | Bolt  | 27-0118  | 4    |
| 12   | Axle Spacer                                 | 62-0189  | 2    | 37                              | Lockwasher                                      | 29-0008  | 4    |
| 13   | Axle  | 20-0748  | 1    | 38                              | Washer  | 28-0022  | 4    |
| 14   | Bushing                                     | 62-0175  | 2    | 39                              | Key   | 43-0078  | 1    |
| 15   | Rear Handle                                 | 7-0183   | 1    | 40                              | Plug  | 23-0244  | 1    |
| 16   | Vibration Isolator                          | 14-0097  | 4    | 41                              | Thermal Relief Valve                            | 22-0005  | 1    |
| 17   | Isolation Plate                             | 56-0053  | 1    | 42                              | Gun/Wand Assembly (Inc. 43-48)                  | 851-0095 | 1    |
| 18   | Bolt  | 27-0121  | 4    | 43                              | Quick Connect Plug                              | 17-0005  | 1    |
| 19   | Flatwasher                                  | 28-0023  | 8    | 44                              | Trigger Gun                                     | 16-0001  | 1    |
| 20   | Locknut                                     | 30-0159  | 4    | 45                              | Wand Grip                                       | 7-0002   | 1    |
| 21   | Engine- 13.0 HP Honda                       | 1-0086   | 1    | 46                              | Wand w/Handle                                   | 16-0418  | 1    |
| 22   | Decal- Warning: Risk of Burns (See 34-9014) | N/A Sep. | 1    | 47                              | Decal- Warning: Risk of Injection (See 34-9014) | N/A Sep. | 1    |
| 23   | Decal- Caution: Risk of Fire (See 34-9014)  | N/A Sep. | 1    | 48                              | Quick Connect Socket                            | 17-0001  | 1    |
| 24   | Grommet                                     | 33-0001  | 5    | 49                              | O-ring  | 25-0122  | 1    |
| 25   | Nozzle- 0003.5                              | 18-0257  | 1    |                                 | Decal Kit (Inc. 22-23, 26, 47)                  | 34-9014  |      |
| -  | Nozzle- 1503.5                              | 18-0258  | 1    | *Must Order in One Foot Lengths |   |          |      |
| -  | Nozzle- 2503.5                              | 18-0259  | 1    |                                 |   |          |      |

# PUMP ASSEMBLY (3-0266)

| TORQUE SPECS. |        |
|---------------|--------|
| POSITION      | FT-LBS |
| 1             | 18     |
| 6             | 7.4    |
| 10            | 4      |
| 25            | 7.4    |
| 33            | 18     |
| 34            | 40     |
| 40            | 18     |

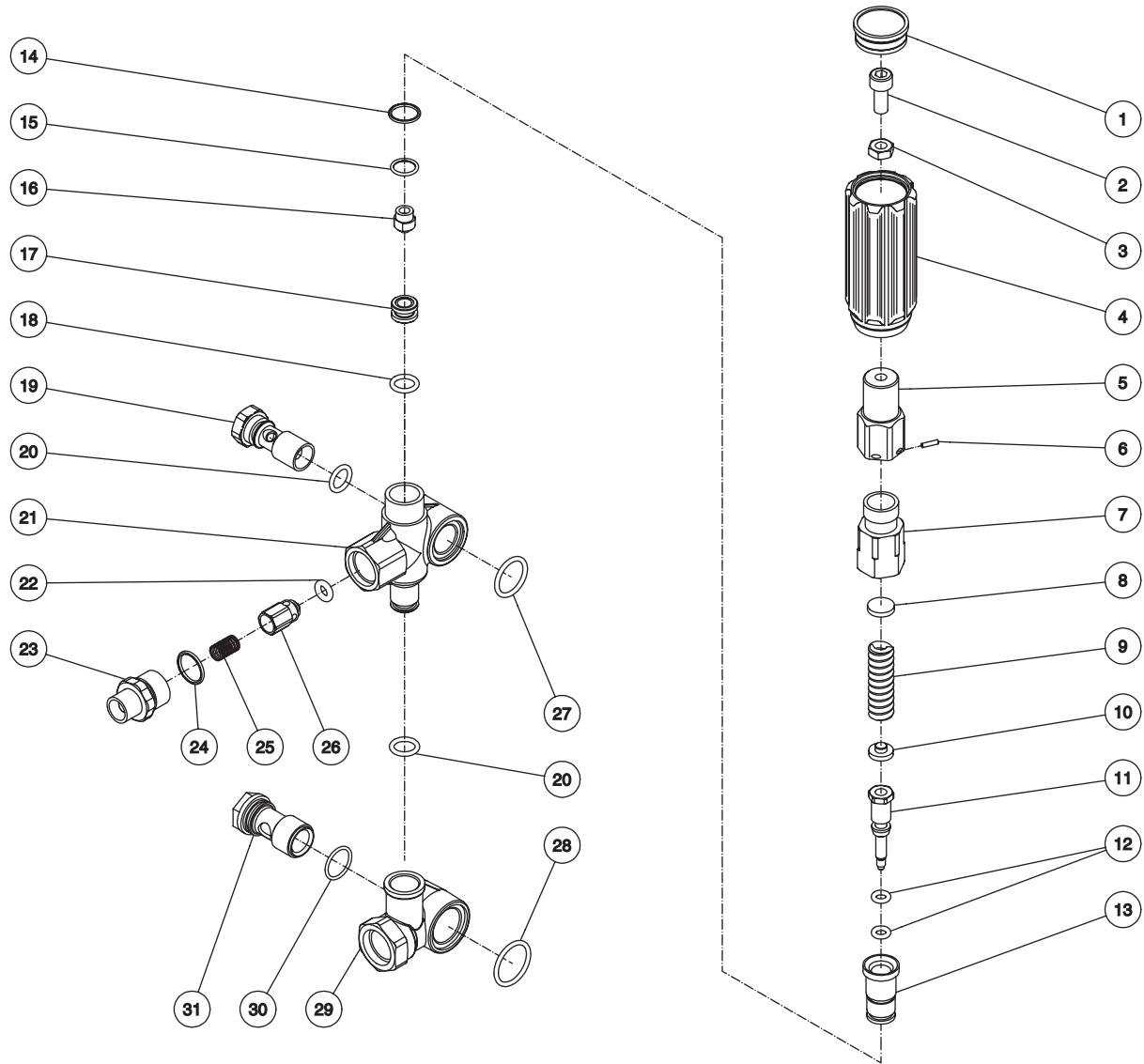


3-0266-032405-JJF

## PUMP ASSEMBLY (3-0266)

| REF. # | DESCRIPTION     | PART #  | QTY. | REF. # | DESCRIPTION                   | PART #   | QTY. | REF. # | DESCRIPTION                                      | PART #   | QTY. |
|--------|-----------------|---------|------|--------|-------------------------------|----------|------|--------|--|----------|------|
| 1      | Screw           | 27-8432 | 4    | 19     | Plunger Rod                   | 46-0699  | 3    | 37     | O-ring   | 25-0386  | 6    |
| 2      | Pump Flange     | 46-0714 | 1    | 20     | Washer                        | 46-0700  | 3    | 38     | Unloader Assembly                                | 8-0533   | 1    |
| 3      | Oil Seal        | 26-0194 | 1    | 21     | Back-up Ring                  | 25-0404  | 3    | 39     | Lockwasher                                       | 29-0154  | 8    |
| 4      | O-ring          | 25-0397 | 1    | 22     | O-ring                        | 25-0382  | 3    | 40     | Screw  | 27-8440  | 8    |
| 5      | Bearing         | 48-0062 | 1    | 23     | Piston                        | 46-0701  | 3    | 41     | Manifold   | 46-1186  | 1    |
| 6      | Screw           | 27-8886 | 1    | 24     | Washer / Gasket               | 26-0191  | 3    | 42     | Support Ring (See 70-0178)                       | N/A Sep. | 3    |
| 7      | Crankshaft      | 46-0959 | 1    | 25     | Nut                           | 30-6020  | 3    | 43     | V-Packing (See 70-0177)                          | N/A Sep. | 3    |
| 8      | Plug            | 39-0086 | 1    | 26     | Oil Dipstick                  | 39-0090  | 1    | 44     | Packing Retainer                                 | 46-0708  | 3    |
| 9      | O-ring          | 25-0325 | 1    | 27     | Pump Crankcase                | 46-0811  | 1    | 45     | Low Pressure Seal (See 70-0177)                  | N/A Sep. | 3    |
| 10     | Screw           | 27-8885 | 6    | 28     | Bearing                       | 48-0072  | 1    | 46     | O-ring   | 25-0384  | 3    |
| 11     | Pump            | 46-0719 | 1    | 29     | O-ring                        | 25-0380  | 1    | 47     | Oil Seal   | 46-0931  | 3    |
| 12     | O-ring          | 25-0370 | 1    | 30     | Shim- 0.2mm (Qty. Varies 1-3) | 46-0705  | 1    |        | Oil Seals Kit (Inc. 3, 4, 16, 29, 47)            | 70-0337  |      |
| 13     | Oil Sight Glass | 46-0670 | 1    | 31     | Shim- 0.1mm (Qty. Varies 1-3) | 46-0704  | 1    |        | Piston Kit (Inc. 3 each 20-25)                   | 70-0352  |      |
| 14     | Oil Reflector   | 46-0824 | 1    | 32     | Bearing Cap                   | 46-0703  | 1    |        | High Pressure Seals Kit (Inc. 3 each 43, 45, 46) | 70-0177  |      |
| 15     | Spring Retainer | 46-0671 | 1    | 33     | Screw                         | 27-8884  | 4    |        | Support Ring Kit (Inc. 3 each 42)                | 70-0178  |      |
| 16     | O-ring          | 25-0398 | 1    | 34     | Valve Cap                     | 39-0095  | 6    |        | Valve Kit (Inc. 6 each 36, 37)                   | 70-0179  |      |
| 17     | Connecting Rod  | 46-0922 | 3    | 35     | O-ring                        | 25-0160  | 6    |        |  |          |      |
| 18     | Piston Pin      | 46-0698 | 3    | 36     | Complete Valve (See 70-0179)  | N/A Sep. | 6    |        |  |          |      |

# UNLOADER ASSEMBLY (8-0533)



8-0533-102104-JJF



## UNLOADER ASSEMBLY (8-0533)

| REF. # | DESCRIPTION     | PART #  | QTY. | REF. # | DESCRIPTION  | PART #  | QTY. |
|--------|-----------------|---------|------|--------|--|---------|------|
| 1      | Unloader Cap    | 7-0142  | 1    | 17     | Seat   | 8-0529  | 1    |
| 2      | Screw           | 27-8433 | 1    | 18     | O-ring   | 25-0527 | 1    |
| 3      | Nut             | 30-3025 | 1    | 19     | Bolt   | 8-0531  | 1    |
| 4      | Unloader Knob   | 7-0141  | 1    | 20     | O-ring   | 25-0388 | 2    |
| 5      | Unloader        | 8-0476  | 1    | 21     | Unloader Body  | 8-0530  | 1    |
| 6      | Unloader Pin    | 8-0478  | 1    | 22     | O-ring   | 25-0437 | 1    |
| 7      | Spring Guide    | 8-0523  | 1    | 23     | Adapter Nipple   | 24-0159 | 1    |
| 8      | Upper Plate     | 8-0524  | 1    | 24     | O-ring   | 25-0372 | 1    |
| 9      | Unloader Spring | 49-0132 | 1    | 25     | Unloader Check Valve Spring                                      | 49-0123 | 1    |
| 10     | Lower Plate     | 8-0525  | 1    | 26     | Unloader Check Valve   | 8-0454  | 1    |
| 11     | Piston          | 8-0526  | 1    | 27     | O-ring   | 25-0528 | 1    |
| 12     | O-ring          | 25-0526 | 2    | 28     | O-ring   | 25-0519 | 1    |
| 13     | Piston Guide    | 8-0527  | 1    | 29     | Bypass Housing   | 8-0532  | 1    |
| 14     | O-ring          | 25-0510 | 1    | 30     | O-ring   | 25-0389 | 1    |
| 15     | O-ring          | 25-0407 | 1    | 31     | Bolt   | 8-0517  | 1    |
| 16     | Bypass Jet      | 8-0528  | 1    |        | Unloader Repair Kit (Inc. 12, 14-15, 18, 20, 22, 24, 27, 28, 30) | 70-0341 |      |