



***Performance Under Pressure***

PARTS LIST FOR  
***CBA-3004-0MHB***  
(AFTER SERIAL #10239171)

|                      |                               |
|----------------------|-------------------------------|
| Engine Oil Grade:    | SAE 10W-30                    |
| Engine Oil Capacity: | 37 oz.                        |
| Pump Oil Grade:      | Mi-T-M Pump Oil #AW-4085-0016 |
| Pump Oil Capacity:   | 15 oz.                        |
| Nozzle Size:         | 4.0                           |

This Parts Listing has been compiled for your benefit. You can be assured your Mi-T-M Cold Water Pressure Washer was constructed and designed with quality and performance in mind using over 25 years experience in the pressure washer business. Each component has been rigorously tested to insure the highest level of acceptance.

The contents of this Parts Listing are based on the latest product information available at the time of publication. Mi-T-M reserves the right to make changes in price, color, materials, equipment, specifications or models at any time without notice.

### **WARNING**

THIS IS A PROFESSIONAL HIGH PRESSURE, COLD WATER PRESSURE WASHER. CAUTION SHOULD BE OBSERVED WHEN USING OR REPAIRING THIS UNIT! READ AND FOLLOW THE SAFETY WARNINGS LISTED BELOW BEFORE ATTEMPTING ANY REPAIRS ON THIS PRESSURE WASHER!

### **SAFETY WARNINGS**

1. NEVER alter or modify the equipment. Be sure any accessory items and system components being used will withstand the pressure developed. Use only genuine Mi-T-M parts for repair of your pressure washer. Failure to do so can cause hazardous operating conditions and will VOID warranty.
2. NEVER make adjustments on machinery while the unit is connected to the engine without first removing the ignition cables from the spark plugs. Turning over the machinery by hand during adjustment or cleaning might start the machinery, causing serious injury to the operator.
3. Know how to stop and bleed pressures quickly. Be thoroughly familiar with controls.
4. Before servicing the unit, turn unit off, relieve the water pressure and allow the unit to cool down. Do not make repairs while the unit is running. Service in a clean, dry, flat area.
5. After testing the machine, DO NOT leave the pressurized unit unattended. Shut off the unit and release trapped pressure before leaving.

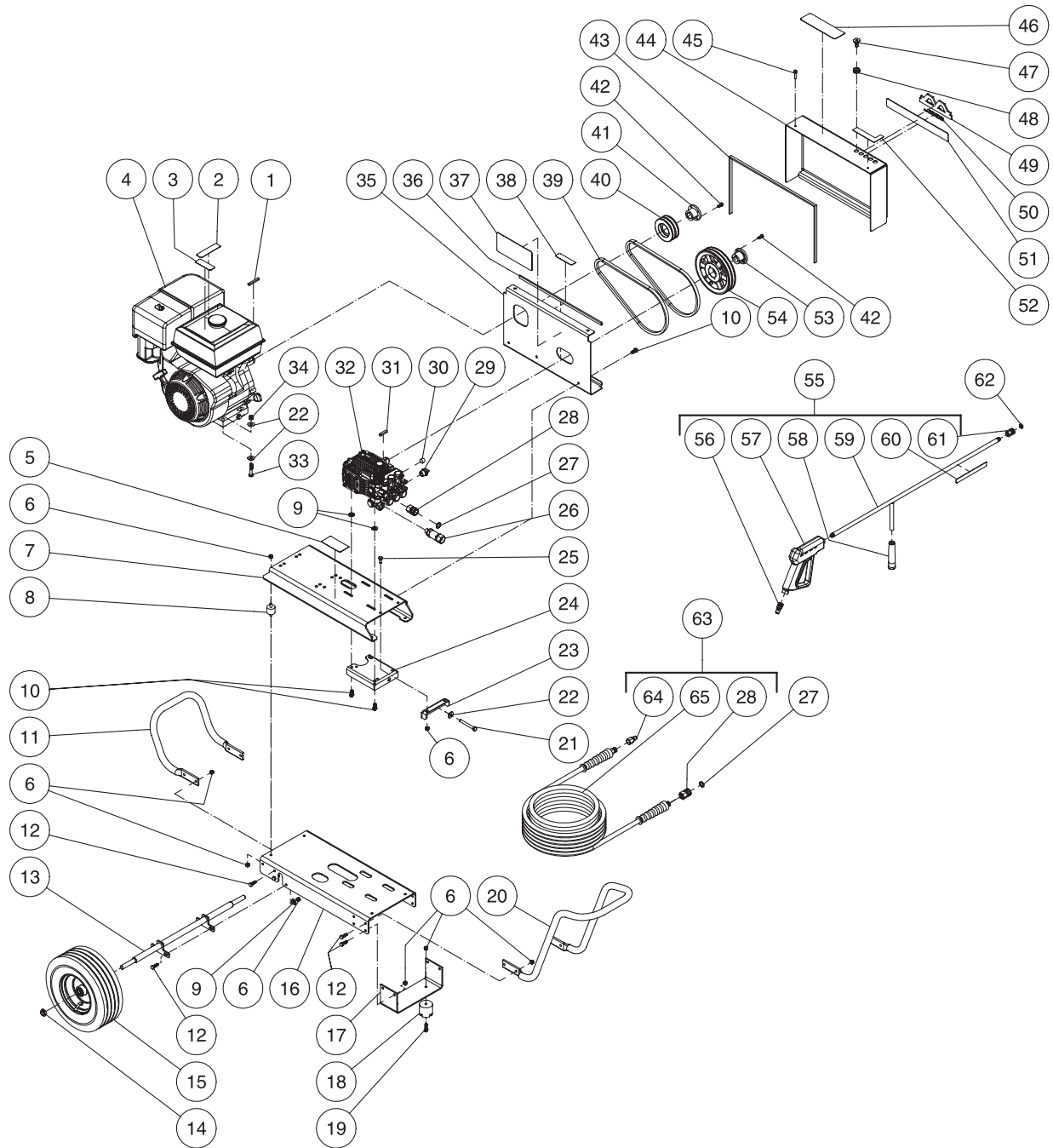
### **Table of Contents**

|  |           |
|--|-----------|
| <b>SPECIFICATIONS</b> .....                          | <b>3</b>  |
| <b>FRAME ASSEMBLY (AFTER SERIAL #10239171)</b> ..... | <b>4</b>  |
| <b>PUMP ASSEMBLY (3-0268)</b> .....                  | <b>6</b>  |
| <b>UNLOADER ASSEMBLY (8-0533)</b> .....              | <b>8</b>  |
| <b>GUN ASSEMBLY (16-0001)</b> .....                  | <b>10</b> |

## SPECIFICATIONS

|  |  |
|--|--|
| <b>MODEL NUMBER</b>                    | <b>CBA-3004-0MHB</b>                               |
| <b>Operating Pressure (PSI/Bar):</b>   | 3000 / 206.8                                       |
| <b>High Pressure Nozzle:</b>           | 4.0  |
| <b>Water Volume (GPM/lpm):</b>         | 3.5 / 13.2   |
| <b>Engine:</b>                         | Honda  |
| Horsepower                             | 11.0   |
| Engine Type                            | 4 Stroke, Overhead Valve, Single Cylinder          |
| Oil Type                               | SAE 10W 30   |
| Oil Capacity (oz./liters)              | 37 / 1.1   |
| Low Oil Protection                     | Oil Alert™   |
| Fuel Type                              | Unleaded Gasoline 86 Octane Minimum                |
| Fuel Capacity (gallon/ liters)         | 1.7 / 6.5  |
| Starting                               | Recoil   |
| Maximum No Load RPM                    | 3600   |
| <b>Pump:</b>                           | Belt Driven, Oil Bath, Triplex Piston              |
| Oil Type                               | Mi-T-M Pump Oil #AW-4085-0016                      |
| Oil Capacity (oz./liters)              | 15 / .44   |
| Plungers                               | Ceramic  |
| Manifold                               | Forged Brass                                       |
| Valves                                 | Stainless Steel                                    |
| Unloader                               | Adjustable   |
| Thermal Relief Valve                   | Relieves heated water during unloader bypass stage |
| <b>Unit Net Weight (Lbs/kg)</b>        | 150 / 68   |
| <b>Unit Shipping Weight (Lbs/kg)</b>   | 204 / 92.5   |
| <b>Unit Net Dimension (In/cm)</b>      | 46.5L x 28W x 27.5H /118L x 71W x 70H              |
| <b>Unit Shipping Dimension (In/cm)</b> | 48L x 30W x 34H /122L x 76W x 86H                  |

# FRAME ASSEMBLY (AFTER SERIAL #10239171)



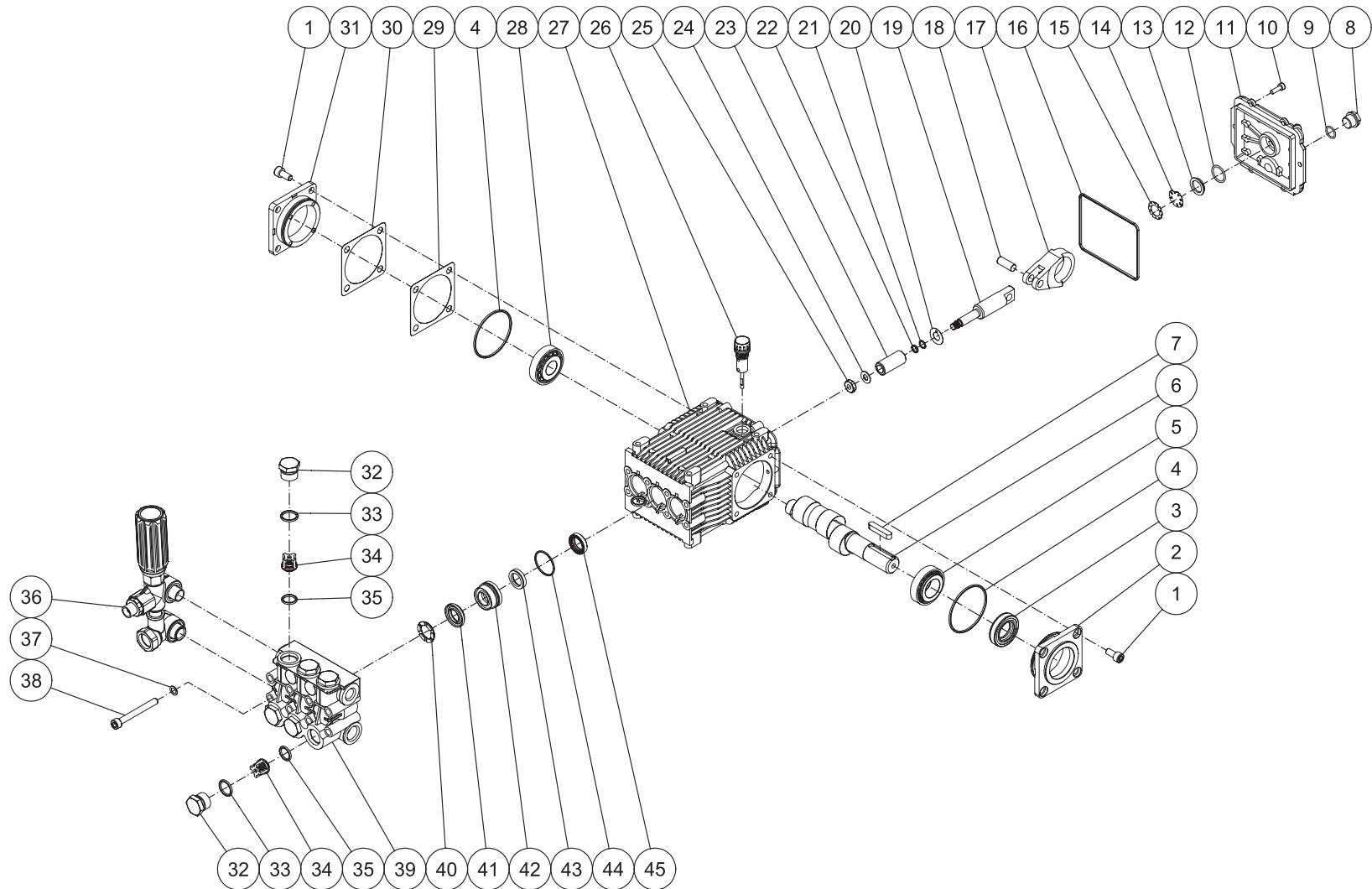
CBA-3004-0MHB-011706-JJT

## FRAME ASSEMBLY (AFTER SERIAL #10239171)

| REF # | DESCRIPTION                                 | PART #     | QTY | REF # | DESCRIPTION                                      | PART #   | QTY | REF # | DESCRIPTION                                     | PART #     | QTY |
|-------|---|------------|-----|-------|--|----------|-----|-------|---|------------|-----|
| 1     | Key   | 43-0078    | 1   | 24    | Tension Bracket                                  | 21-0220  | 1   | 47    | Nozzle- 0004                                    | 18-0028    | 1   |
| 2     | Decal- Warning: Risk of Burns (See 34-9017) | N/A Sep.   | 1   | 25    | Bolt   | 27-0066  | 2   | -     | Nozzle- 1504                                    | 18-0029    | 1   |
| 3     | Decal- Caution: Risk of Fire (See 34-9017)  | N/A Sep.   | 1   | 26    | Inlet Filter                                     | 19-0206  | 1   | -     | Nozzle- 2504                                    | 18-0030    | 1   |
| 4     | Engine- Honda 11 HP                         | 1-0039     | 1   | 27    | O-ring   | 25-0123  | 2   | -     | Nozzle- 4004                                    | 18-0031    | 1   |
| 5     | Decal- Data Plate                           | N/A        | 1   | 28    | Quick Connect Socket                             | 17-0004  | 2   | 48    | Grommet   | 33-0001    | 5   |
| 6     | Locknut                                     | 30-0157    | 28  | 29    | Thermal Relief Valve                             | 22-0005  | 1   | 49    | Decal- Mi-T-M Small Logo                        | 62-0086    | 1   |
| 7     | Isolation Plate                             | 5-0223     | 1   | 30    | Plug   | 23-0244  | 1   | 50    | Decal- White Die Cut 3000PSI                    | 34-0775    | 1   |
| 8     | Isolator                                    | 14-0097    | 4   | 31    | Key w/ Pump                                      | 43-0091  | 1   | 51    | Decal- Mi-T-M Stripe                            | 34-0502    | 1   |
| 9     | Washer                                      | 28-0022    | 8   | 32    | Pump   | 3-0268   | 1   | 52    | Decal- Nozzles 0, 15, 25, 40                    | 34-0500    | 1   |
| 10    | Bolt  | 27-9524    | 7   | 33    | Bolt   | 27-0121  | 4   | 53    | Bushing   | 9-0017     | 1   |
| 11    | Rear Handle                                 | 7-0183     | 1   | 34    | Locknut  | 30-0159  | 4   | 54    | Sheave  | 10-0035    | 1   |
| 12    | Bolt  | 27-0067    | 16  | 35    | Beltguard Back                                   | 6-0106   | 1   | 55    | Gun/Wand Assembly (Inc. 55-61)                  | 851-0095   | 1   |
| 13    | Axle Bracket                                | 20-0864A01 | 1   | 36    | Edging *(Two Feet Required)                      | 33-0433  | 1   | 56    | Quick Connect Plug                              | 17-0005    | 1   |
| 14    | Jam Nut                                     | 30-0117    | 2   | 37    | Decal- Warning/Caution (See 34-9017)             | N/A Sep. | 1   | 57    | Trigger Gun                                     | 16-0001    | 1   |
| 15    | Wheel                                       | 14-0006    | 2   | 38    | Decal- Warning: Beltguard in Place (See 34-9017) | N/A Sep. | 1   | 58    | Wand Grip                                       | 7-0002     | 1   |
| 16    | Baseplate                                   | 5-0222     | 1   | 39    | Drive Belt                                       | 11-0031  | 2   | 59    | Wand  | 16-0120A01 | 1   |
| 17    | Support Bracket                             | 56-0054    | 1   | 40    | Sheave   | 10-0074  | 1   | 60    | Decal- Warning: Risk of Injection (See 34-9017) | N/A Sep.   | 1   |
| 18    | Isolator                                    | 14-0008    | 2   | 41    | Bushing  | 9-0005   | 1   | 61    | Quick Connect Socket                            | 17-0001    | 1   |
| 19    | Bolt  | 27-0068    | 2   | 42    | Bolt   | 27-0015  | 4   | 62    | O-ring  | 25-0122    | 1   |
| 20    | Front Handle                                | 7-018201   | 1   | 43    | Edging *(Four Feet Required)                     | 33-0433  | 1   | 63    | Hose Assembly (Inc. 28, 64-65)                  | 851-0007   | 1   |
| 21    | Bolt  | 27-0576    | 1   | 44    | Beltguard Cover                                  | 6-0107   | 1   | 64    | Quick Connect Plug                              | 17-0006    | 1   |
| 22    | Flatwasher                                  | 28-0023    | 9   | 45    | Bolt   | 27-8898  | 2   | 65    | Hose  | 15-0003    | 1   |
| 23    | Tension Bracket                             | 21-0218    | 1   | 46    | Decal- Operation (See 34-9017)                   | N/A Sep. | 1   |       | Safety Decal Kit (Inc. 2-3, 37, 38, 46, 60)     | 34-9017    |     |

\*Must Order in One Foot Lengths

# PUMP ASSEMBLY (3-0268)

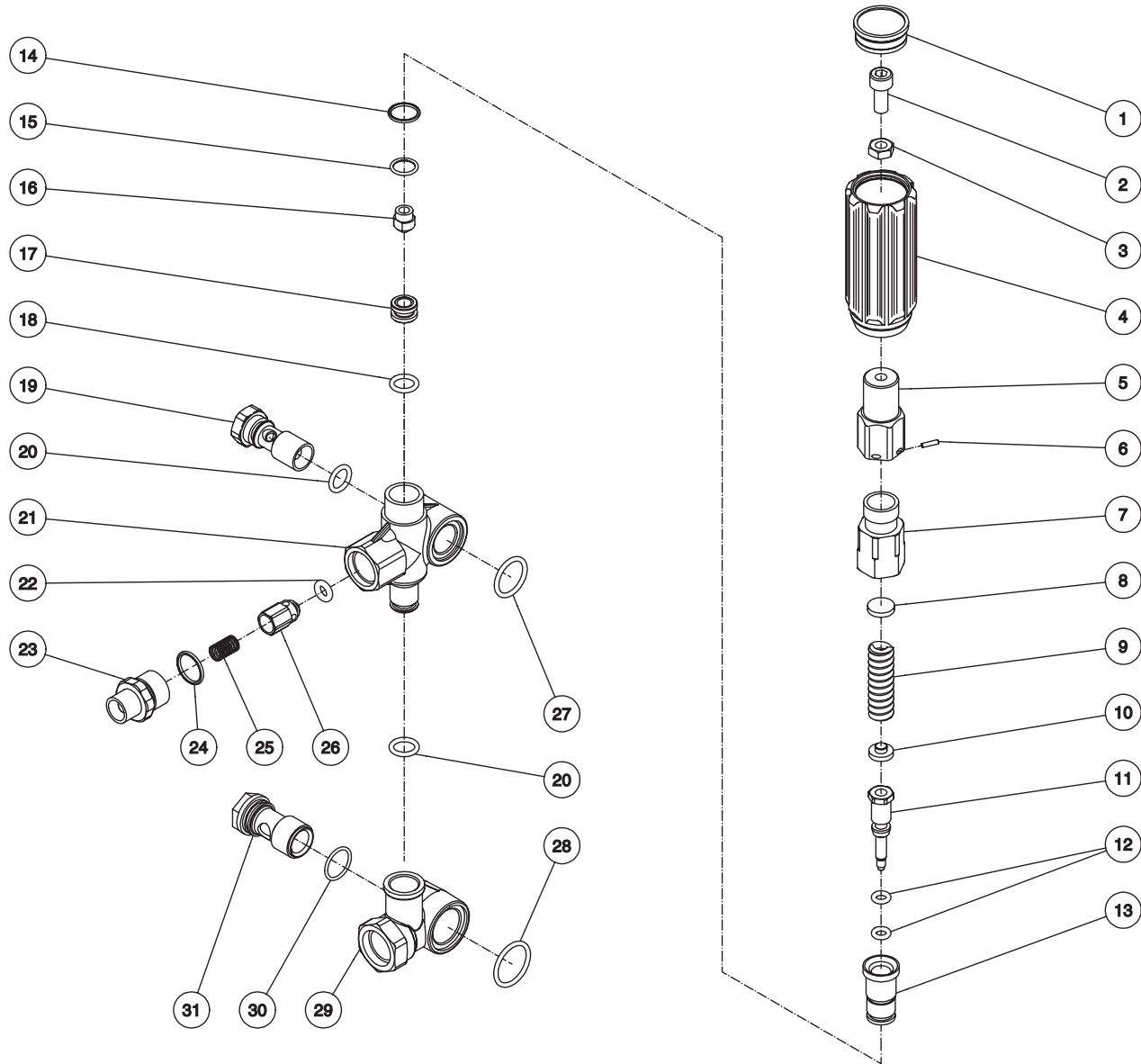


3-0268-100708-CH

## PUMP ASSEMBLY (3-0268)

| REF. # | DESCRIPTION     | PART #  | QTY. | REF. # | DESCRIPTION                           | PART #   | QTY. | REF. # | DESCRIPTION                                      | PART #   | QTY. |
|--------|-----------------|---------|------|--------|---------------------------------------|----------|------|--------|--|----------|------|
| 1      | Screw           | 27-8884 | 8    | 18     | Piston Pin                            | 46-0698  | 3    | 35     | O-ring   | 25-0386  | 6    |
| 2      | Pump Shaft      | 46-0691 | 1    | 19     | Plunger Rod                           | 46-0699  | 3    | 36     | Unloader   | 8-0533   | 1    |
| 3      | Oil Seal        | 26-0188 | 1    | 20     | Washer                                | 46-0700  | 3    | 37     | Lockwasher                                       | 29-0154  | 8    |
| 4      | O-ring          | 25-0380 | 2    | 21     | Back Ring                             | 25-0404  | 3    | 38     | Screw  | 27-8440  | 8    |
| 5      | Bearing         | 48-0061 | 2    | 22     | O-ring                                | 25-0382  | 3    | 39     | Manifold   | 46-1186  | 1    |
| 6      | Crankshaft      | 46-1103 | 1    | 23     | Piston                                | 46-0701  | 3    | 40     | Support Ring (See 70-0178)                       | N/A Sep. | 3    |
| 7      | Key             | 43-0091 | 1    | 24     | Washer / Gasket                       | 26-0191  | 3    | 41     | V-Packing (See 70-0177)                          | N/A Sep. | 3    |
| 8      | Plug            | 39-0086 | 1    | 25     | Nut                                   | 30-6020  | 3    | 42     | Packing Retainer                                 | 46-0708  | 3    |
| 9      | O-ring          | 25-0325 | 1    | 26     | Oil Dipstick                          | 39-0090  | 1    | 43     | Low Pressure Seal (See 70-0177)                  | N/A Sep. | 3    |
| 10     | Screw           | 27-8885 | 6    | 27     | Pump Crankcase                        | 46-1198  | 1    | 44     | O-ring   | 25-0384  | 3    |
| 11     | Pump            | 46-0719 | 1    | 28     | Bearing                               | 46-0072  | 1    | 45     | Oil Seal   | 46-0931  | 3    |
| 12     | O-ring          | 25-0370 | 1    | 29     | Shim - 0.2mm (Qty. vaires 1-3)        | 46-0705  | 1    |        | High Pressure Seals Kit (Inc. 3 each 41, 43, 44) | 70-0177  |      |
| 13     | Oil Sight Glass | 46-0670 | 1    | 30     | Shim - 0.1mm (Qty. vaires 1-3)        | 46-0704  | 1    |        | Support Ring Kit (Inc. 3 each 40)                | 70-0178  |      |
| 14     | Oil Reflector   | 46-0824 | 1    | 31     | Bearing Cap                           | 46-0703  | 1    |        | Valve Kit (Inc. 6 each 34, 35)                   | 70-0319  |      |
| 15     | Spring Retainer | 46-0671 | 1    | 32     | Valve Cap                             | 39-0095  | 6    |        | Oil Seals Kit (Inc. 3, 4, 16, 45)                | 70-0321  |      |
| 16     | O-ring          | 25-0398 | 1    | 33     | O-ring                                | 25-0160  | 6    |        | Piston Kit (Inc. 3 each 20-25)                   | 70-0352  |      |
| 17     | Connecting Rod  | 46-0896 | 3    | 34     | Complete Valve Assembly (See 70-0319) | N/A Sep. | 6    |        |  |          |      |

# UNLOADER ASSEMBLY (8-0533)



8-0533-102104-JJF



## UNLOADER ASSEMBLY (8-0533)

| REF. # | DESCRIPTION     | PART #  | QTY. | REF. # | DESCRIPTION  | PART #  | QTY. |
|--------|-----------------|---------|------|--------|--|---------|------|
| 1      | Unloader Cap    | 7-0142  | 1    | 17     | Seat   | 8-0529  | 1    |
| 2      | Screw           | 27-8433 | 1    | 18     | O-ring   | 25-0527 | 1    |
| 3      | Nut             | 30-3025 | 1    | 19     | Bolt   | 8-0531  | 1    |
| 4      | Unloader Knob   | 7-0141  | 1    | 20     | O-ring   | 25-0388 | 2    |
| 5      | Unloader        | 8-0476  | 1    | 21     | Unloader Body  | 8-0530  | 1    |
| 6      | Unloader Pin    | 8-0478  | 1    | 22     | O-ring   | 25-0437 | 1    |
| 7      | Spring Guide    | 8-0523  | 1    | 23     | Adapter Nipple   | 24-0159 | 1    |
| 8      | Upper Plate     | 8-0524  | 1    | 24     | O-ring   | 25-0372 | 1    |
| 9      | Unloader Spring | 49-0132 | 1    | 25     | Unloader Check Valve Spring                                      | 49-0123 | 1    |
| 10     | Lower Plate     | 8-0525  | 1    | 26     | Unloader Check Valve   | 8-0454  | 1    |
| 11     | Piston          | 8-0526  | 1    | 27     | O-ring   | 25-0528 | 1    |
| 12     | O-ring          | 25-0526 | 2    | 28     | O-ring   | 25-0519 | 1    |
| 13     | Piston Guide    | 8-0527  | 1    | 29     | Bypass Housing   | 8-0532  | 1    |
| 14     | O-ring          | 25-0510 | 1    | 30     | O-ring   | 25-0389 | 1    |
| 15     | O-ring          | 25-0407 | 1    | 31     | Bolt   | 8-0517  | 1    |
| 16     | Bypass Jet      | 8-0528  | 1    |        | Unloader Repair Kit (Inc. 12, 14-15, 18, 20, 22, 24, 27, 28, 30) | 70-0341 |      |