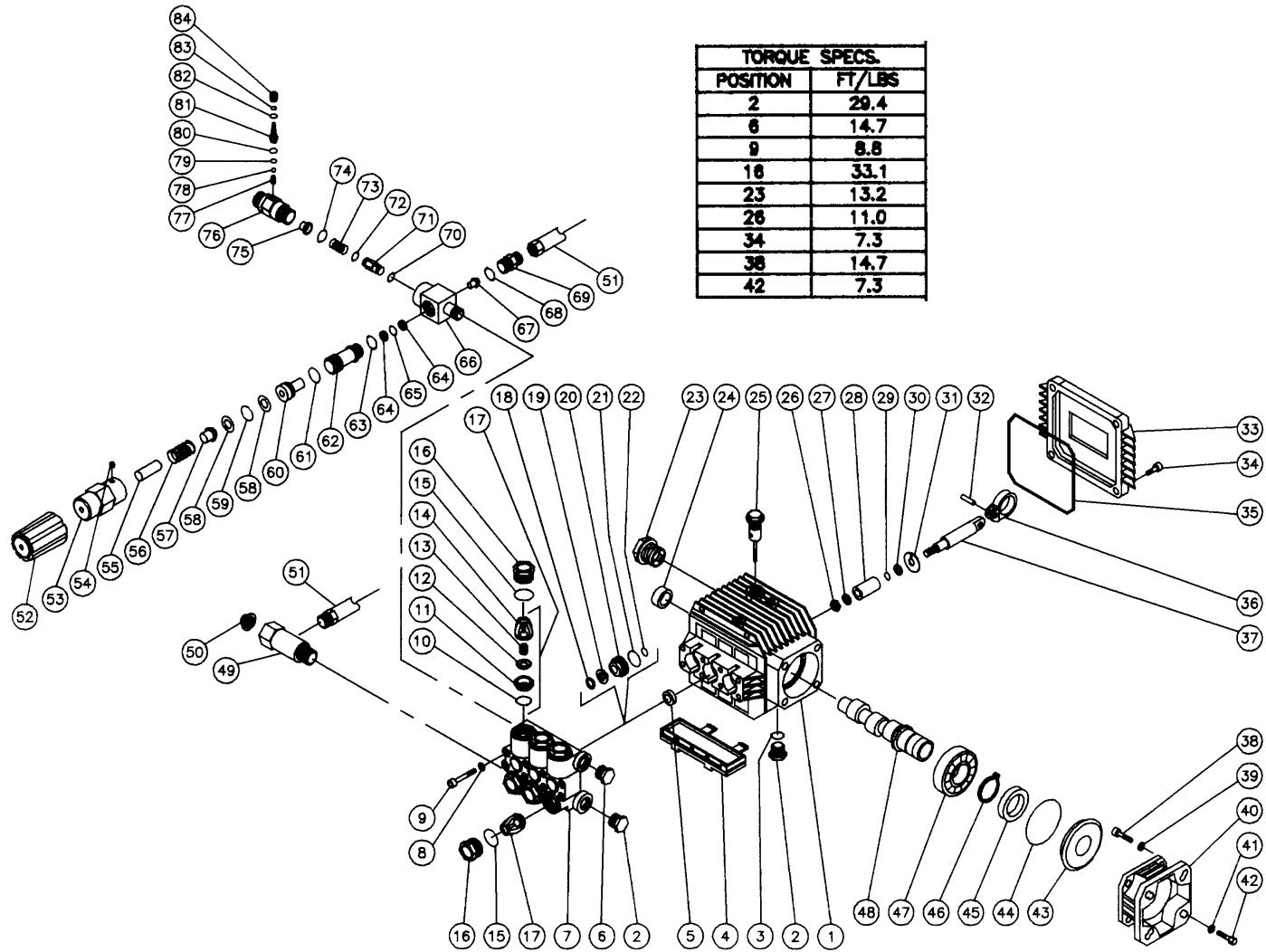


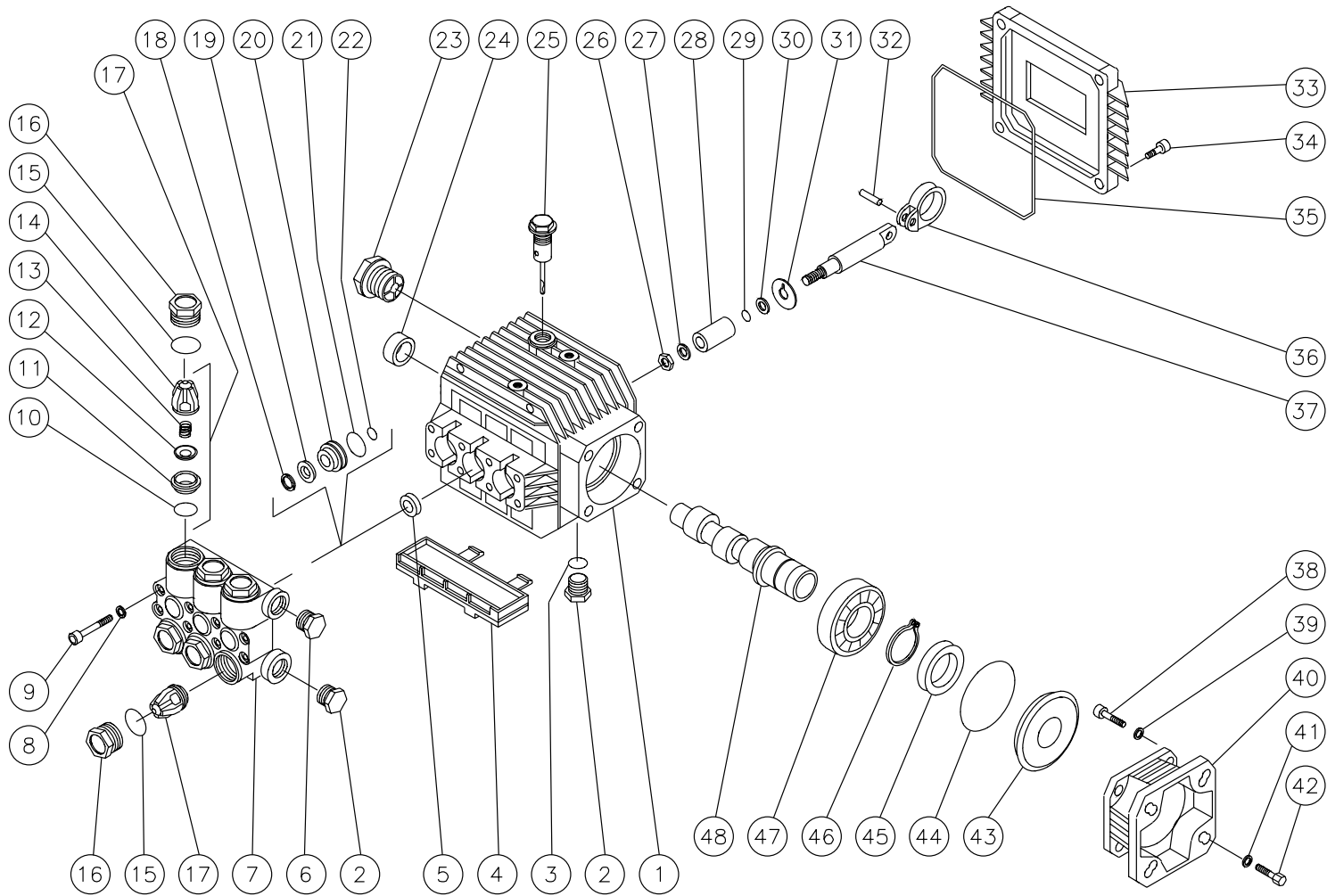
# OLD PUMP ASSEMBLY FOR CD-1504 (3-0128) & CD-2003 (3-0122) SERIES



OMPMP015-022295-BAR

OLD PUMP ASSEMBLY FOR CD-1504 (3-0128) & CD-2003 (3-0122) SERIES											
REF. #	DESCRIPTION	PART #	QTY.	REF. #	DESCRIPTION	PART #	QTY.	REF. #	DESCRIPTION	PART #	QTY.
1	Crankcase	46-0221	1	34	Bolt	27-8409	4	64	Back-up Ring (See 70-0109 or 70-0114)	N/A Sep.	2
2	Hex Plug	39-0018	1	35	O-ring	25-0332	1	65	O-ring (See 70-0109 or 70-0114)	N/A Sep.	1
3	O-ring	25-0052	1	36	Connecting Rod	46-0152	3	66	Unloader Body	8-0296	1
4	Drip Pan	46-0229	1	37	Piston Guide	46-0149	3	67	Ball Piston (See 70-0109 or 70-0114)	N/A Sep.	1
5	Oil Seal	26-0111	3	38	Bolt	27-0846	4	68	O-ring (See 70-0109 or 70-0114)	N/A Sep.	1
6	Hex Plug	39-0017	1	39	Lockwasher	29-0154	4	69	By-pass Seat (See 70-0109 or 70-0114)	N/A Sep.	1
7	Manifold- Brass	46-0163	1	40	Flange	38-0021	1	70	O-ring (See 852-0087)	N/A Sep.	1
8	Lockwasher	29-0153	8	41	Lockwasher	29-0153	4	71	Backflow Check	8-0300	1
9	Bolt	27-8406	8	42	Bolt	27-8409	4	72	O-ring (See 852-0087)	N/A Sep.	1
10	O-ring (See 70-0009)	N/A Sep.	6	43	Spacer	46-0087	1	73	Check Spring (See 852-0087)	N/A Sep.	1
11	Valve Seat (See 70-0009)	N/A Sep.	6	44	O-ring	25-0060	1	74	O-ring	25-0216	1
12	Valve Plate (See 70-0009)	N/A Sep.	6	45	Oil Seal	26-0126	1	75	Injector Orifice	50-0069	1
13	Valve Spring (See 70-0009)	N/A Sep.	6	46	Snap Ring	46-0245	1	76	Injector	50-0071	1
14	Valve Cage (See 70-0009)	N/A Sep.	6	47	Bearing	48-0024	1	77	Spring (See 852-0086)	N/A Sep.	1
15	O-ring	25-0012	6	48	Crankshaft (CD-1504)	46-0329	1	78	Ball (See 852-0086)	N/A Sep.	1
16	Valve Plug	39-0035	6	-	Crankshaft (CD-2003)	46-0233	1	79	O-ring (See 852-0086)	N/A Sep.	1
17	Valve Assembly (See 70-0009)	N/A Sep.	6	49	Inlet Fitting	23-0148	1	80	O-ring (See 852-0086)	N/A Sep.	1
18	Head Ring (See 70-0009)	N/A Sep.	6	50	Filter	19-0001	1	81	Hose Barb	50-0070	1
19	V-Packing (See 70-0009)	N/A Sep.	6	51	By-pass Hose	15-0094	1	82	O-ring	25-0329	1
20	V-Packing Retainer	46-0158	3	52	Plastic Adjustable Knob	7-0096	1	83	O-ring	25-0328	1
21	O-ring	25-0141	3	53	Adjustable Knob (CD-1504)	7-0081	1	84	Adjustment Knob	8-0384	1
22	O-ring	25-0128	1	-	Adjustable Knob (CD-2003)	7-0109	1		Valve Kit (Inc. 6 each 10-14)	70-0009	
23	Oil Level Indicator	46-0114	1	54	Stop Adjusting Knob (See 70-0109 or 70-0114)	N/A Sep.	1		V-Packing Kit (Inc. 3 each 18, 19, 21, 22)	70-0024	
24	Needle Bearing	48-0019	1	55	Spring Guide	8-0386	1		Unloader Check Valve Kit (Inc. 70, 72, 73)	852-0087	
25	Oil Dipstick	46-0143	1	56	Spring (CD-1504)	49-0068	1		Unloader Repair Kit for 1500PSI (Inc. 54, 56, 58, 59, 61, 64, 65, 67-69)	70-0109	
26	Nut	46-0168	3	-	Spring (CD-2003)	49-0106	1		Unloader Repair Kit for 2000PSI (Inc. 54, 56, 58, 59, 61, 64, 65, 67-69)	70-0114	
27	Washer	46-0166	3	57	Spring Seat	8-0309	1		Complete Injector- 1500PSI	50-0067	
28	Plunger	46-0148	3	58	Back-up Ring (See 70-0109 or 70-0114)	N/A Sep.	2		Complete Injector- 2000PSI	50-0066	
29	O-ring	25-0045	3	59	O-ring (See 70-0109 or 70-0114)	N/A Sep.	1		Injector Repair Kit (Inc. 77-80)	852-0086	
30	Back-up Ring	25-0143	3	60	Piston	8-0315	1		Seal Kit (Inc. 3 each 5)	70-0015	
31	Washer	46-0167	3	61	O-ring (See 70-0109 or 70-0114)	N/A Sep.	1		Complete Unloader- 1500PSI	8-0314	
32	Piston Connecting Rod Pin	43-0044	3	62	Barrell Stem Retainer	23-0147	1		Complete Unloader- 2000PSI	8-0385	
33	Crankcase Cover	46-0151	1	63	O-ring	25-0211	1				

# NEW PUMP ASSEMBLY FOR CD-1504 (3-0128) & CD-2003 (3-0122) SERIES



TORQUE SPECS.	
POSITION	FT-LBS
2	29.4
6	14.7
9	8.8
16	33.1
23	13.2
26	11.0
34	7.3
38	14.7
42	7.3

3-0090-110399-RD

## NEW PUMP ASSEMBLY FOR CD-1504 (3-0092) &amp; CD-2004 (3-0092) SERIES

REF. #	DESCRIPTION	PART #	QTY.	REF. #	DESCRIPTION	PART #	QTY.	REF. #	DESCRIPTION	PART #	QTY.
1	Crankcase	46-0221	1	19	V-Packing (See 70-0024)	N/A Sep.	3	37	Piston Guide	46-0149	3
2	Plug	39-0018	2	20	V-Packing Retainer	46-0158	3	38	Bolt	27-0846	4
3	O-ring	25-0052	1	21	O-ring	25-0141	3	39	Lockwasher	29-0154	4
4	Drip Pan	46-0229	1	22	O-ring	25-0128	3	40	Flange	38-0021	1
5	Oil Seal	26-0111	3	23	Oil Level Indicator	46-0114	1	41	Lockwasher	29-0153	4
6	Plug	39-0017	1	24	Bearing	48-0019	1	42	Bolt	27-8409	4
7	Manifold	46-0163	1	25	Oil Dip Stick	46-0143	1	43	Spacer	46-0087	1
8	Lockwasher	29-0153	8	26	Nut	46-0168	3	44	O-ring	25-0060	1
9	Head Bolt	27-8406	8	27	Washer	46-0166	3	45	Oil Seal	26-0126	1
10	O-ring (See 70-0009)	N/A Sep.	6	28	Plunger	46-0148	3	46	Snap Ring	46-0245	1
11	Valve Seat (See 70-0009)	N/A Sep.	6	29	O-ring	25-0045	3	47	Bearing	48-0024	1
12	Valve Plate (See 70-0009)	N/A Sep.	6	30	Back-up Ring	25-0143	3	48	Crankshaft- 3-0090	46-0233	1
13	Valve Spring (See 70-0009)	N/A Sep.	6	31	Washer	46-0167	3	-	Crankshaft- 3-0092	46-0329	1
14	Valve Cage (See 70-0009)	N/A Sep.	6	32	Connecting Rod	43-0044	3		Valve Kit (Includes 10-14, 17)	70-0009	
15	O-ring	25-0012	6	33	Crankcase Cover	46-0151	1		V-Packing Kit (Includes 18-19, 21-22)	70-0024	
16	Valve Cap	39-0035	6	34	Bolt	27-8409	4		V-Packing Assembly (18-22)	70-0023	
17	Valve Assembly (Includes 10-14) (See 70-0009)	N/A Sep.	6	35	O-ring Cover	25-0332	1				
18	Head Ring (See 70-0024)	N/A Sep.	3	36	Connecting Rod	46-0152	3				