

Mi-T-M® CORPORATION ■ Peosta, IA 52068

ILLUSTRATED PARTS LIST

FOR PRESSURE WASHER MODEL:

CW-2004-0ME1

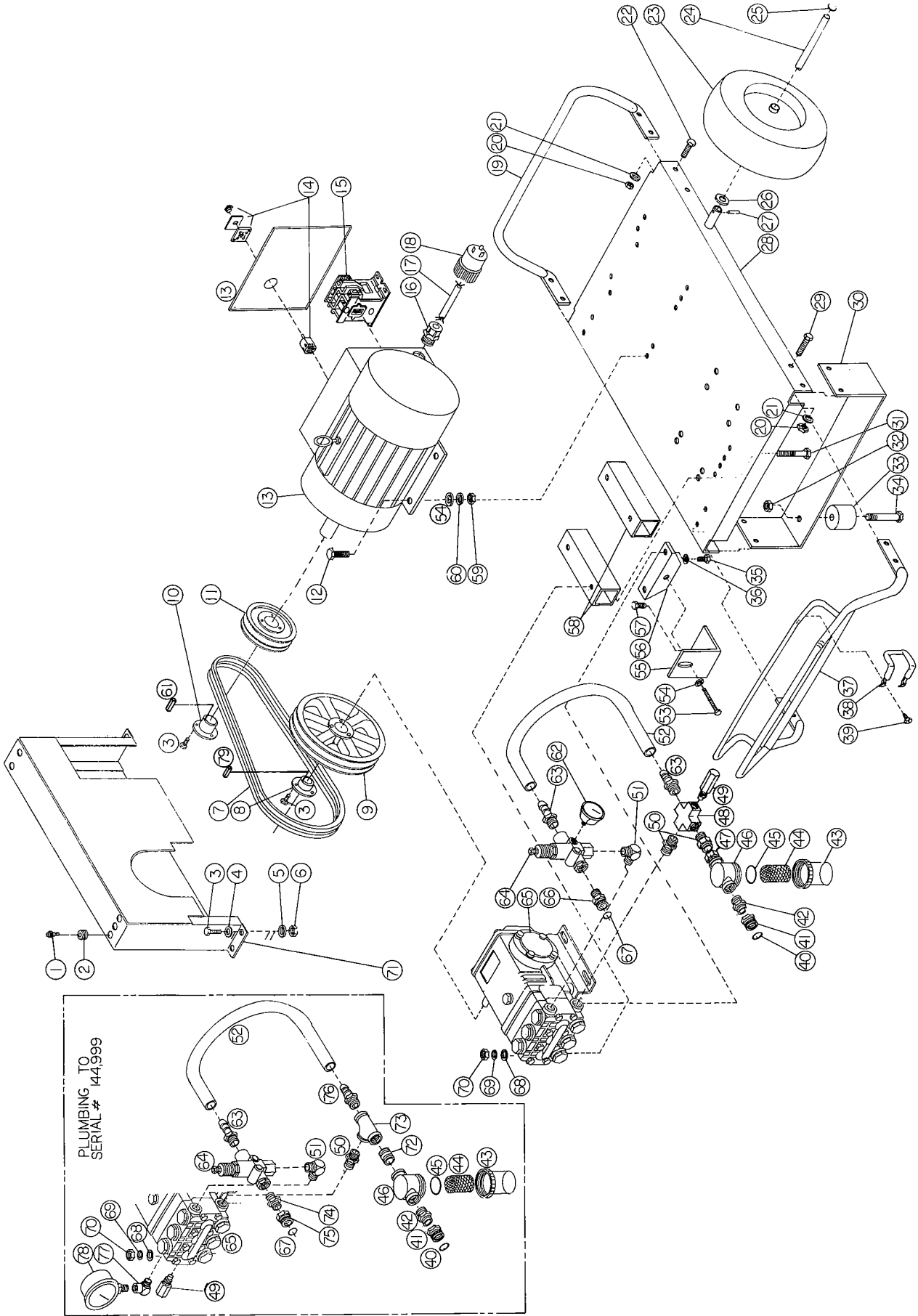
(SERIAL #000001-)

<u>CW-2004-0ME1 PARTSLISTING KEY</u>	
PUMP PART#:	3-0007
GEAR REDUCTION PART#:	NA
UNLOADER PART #:	8-0031
GUN/WAND ASSEMBLY PART #:	851-0095
GUN PART #:	16-0001

SPECIFICATIONS:

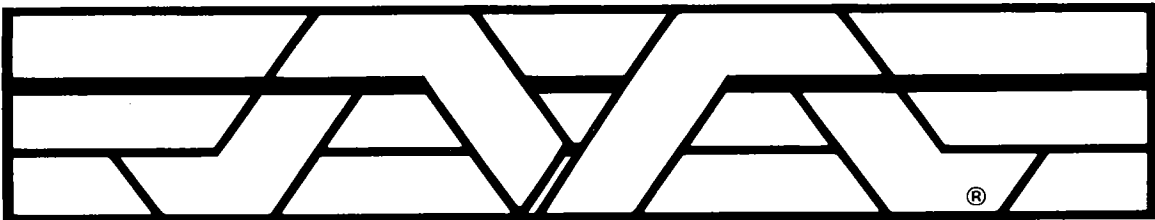
MAXIMUM PRESSURE.....2000 PSI
 MAXIMUM FLOW..... 3.8 GPM
 NOZZLE SIZE#5.5
 PUMP OIL CAPACITY..... 33.8 OZ.
 PUMP OIL GRADE..... SAE #30W NON-DET

MODEL CW-2004-0ME1



MODEL CW-2004-0ME1

Ref. No.	Description	Part No.	Ref. No.	Description	Part No.
1	Nozzle, 00055	18-0035	40	Garden hose gasket	26-0001
1	Nozzle, 15055	18-0041	41	Garden hose swivel	23-0021
1	Nozzle, 25055	18-0062	42	Hex nipple	23-0026
1	Nozzle, 40055	18-0132	43	Strainer bowl	19-0025
2	Grommet	33-0001	44	Stainless steel screen	19-0015
3	Bolt	27-0015	45	Strainer gasket	26-0072
4	Flatwasher	28-0002	46	Strainer cap	19-0024
5	Lockwasher	29-0006		Strainer complete (includes items 43-46)	19-0004
6	Hex nut	30-0002	47	Hex bushing	23-0023
7	Belts	11-0028	48	Cross-all female	23-0071
8	Pump bushing	9-0017	49	Heat dump valve	22-0005
9	Pump sheave	10-0042	50	Hex nipple	23-0012
10	Motor bushing	9-0010	51	Elbow	24-0003
11	Motor sheave	10-0026	52	Bypass hose	15-0035
12	Bolt	27-0118	53	Bolt	27-0576
13	Motor	2-0009	54	Flatwasher	28-0023
14	Switch	22-0122	55	Tightener brace angle	13-0003
15	Contractor	32-0038	56	Tightener angle with nut	13-0050
16	Cord connector	32-0040	57	Bolt	27-0117
17	Power cord (10 feet required)*	32-0022	58	Pump mounts	13-0028
18	Male plug	32-0029	59	Hex nut	30-0006
19	Rear handle	7-0011	60	Lockwasher	29-0008
20	Hex nut	30-0004	61	Key-motor shaft	43-0039
21	Lockwasher	29-0007	62	Pressure gauge	22-0106
22	Bolt	27-0066	63	Hose lock barb	23-0007
23	Wheel	14-0006	64	Unloader valve complete	8-0031
24	Axle	20-0060	65	Pump complete	3-0007
25	Hub cap	33-0018	66	Quick connect	17-0029
26	Flatwasher	28-0008	67	O-ring	25-0123
27	Roll pin	43-0002	68	Flatwasher	28-0005
28	Base plate	5-0061	69	Lockwasher	29-0009
29	Bolt	27-0067	70	Hex nut	30-0008
30	Underbracket	13-0042	71	Beltguard	6-0002
31	Bolt	27-0173	72	Close nipple	23-0003
32	Hex Nut	30-0157	73	Tee	23-0009
33	Isolator	14-0008	74	Hex nipple	23-0018
34	Bolt	27-0068	75	Quick connect	17-0004
35	Bolt	27-8471	76	Hose barb	23-0008
36	Lockwasher	29-0055	77	Elbow	24-0004
37	Front handle	7-0010	78	Pressure gauge	22-0007
38	Wand holder	20-0181	79	Key, pump shaft	43-0028
39	Bolt	27-3061		*Order in 1 foot lengths.	



Mi-T-M[®] CORPORATION