

Mi-T-M® CORPORATION ■ Peosta, IA 52068

# ILLUSTRATED PARTS LISTING

FOR PRESSURE WASHER MODEL(S):

CW-2205-0MB0

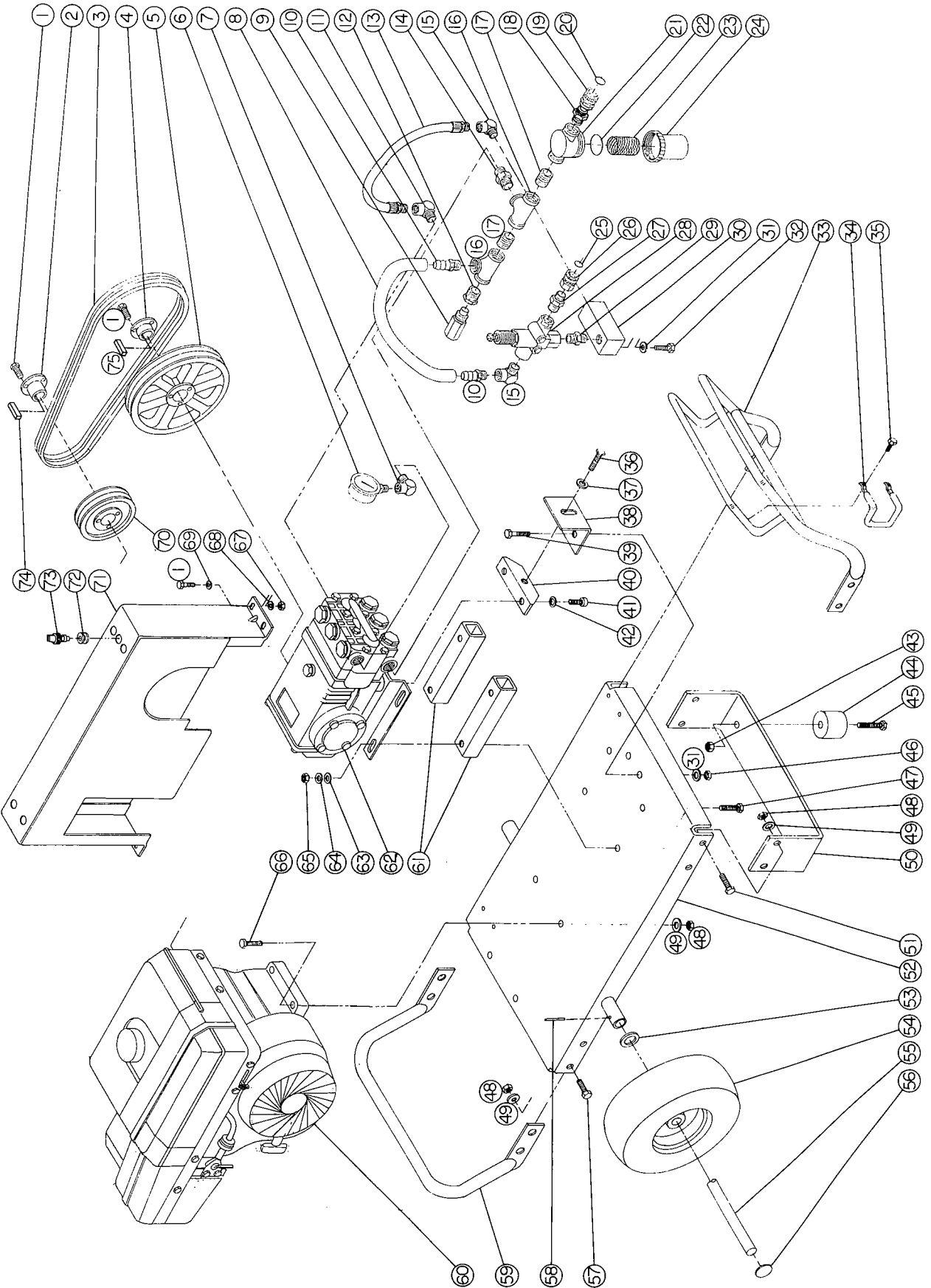
(SERIAL #000001- )

<b>CW-2205-0MB0 PARTS LISTING KEY</b>	
PUMP PART#:	3-0008
GEAR REDUCTION PART#:	NA
UNLOADER PART #:	8-0031
GUN/WAND ASSEMBLY PART #:	851-0095
GUN PART #:	16-0001

## SPECIFICATIONS:

MAXIMUM PRESSURE ..... 2200 PSI  
 MAXIMUM FLOW ..... 4.5 GPM  
 NOZZLE SIZE ..... #6  
 PUMP OIL CAPACITY ..... 33.8 OZ.  
 PUMP OIL GRADE ..... SAE #30W NON-DET  
 ENGINE OIL CAPACITY ..... 40 OZ.  
 ENGINE OIL GRADE ..... #30-SE-SC-SF-SD  
 FUEL TANK CAPACITY ..... 160 OZ.  
 RECOMMENDED FUEL ..... LEAD FREE

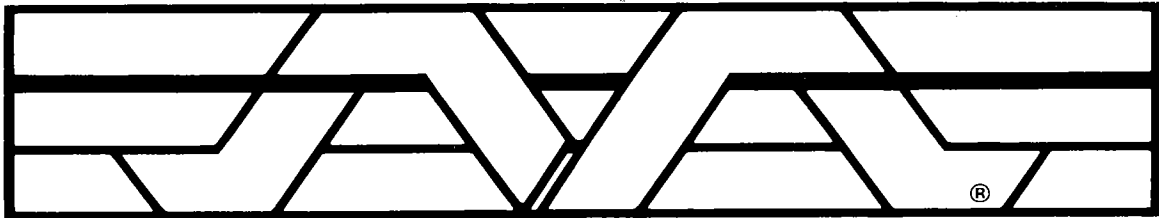
**MODEL CW-2205-0MB0 (OLD)**



CW-220

MB0 (OLD)

Ref. No.	Description	Part No.	Ref. No.	Description	Part No.
1	Bolt	27-0015	46	Hex nut	30-0006
2	Bushing engine shaft	9-0005	47	Bolt	27-0173
3	Belts	11-0005	48	Hex nut	30-0004
4	Bushing pump shaft	9-0017	49	Lockwasher	29-0007
5	Sheave-pump	10-0037	50	Underbracket	13-0042
6	Pressure gauge	22-0007	51	Bolt	27-0067
7	Elbow	24-0004	52	Base plate	5-0005
8	Bypass hose	15-0035	53	Flatwasher	28-0008
9	Heat dump valve	22-0005	54	Wheel	14-0006
10	Hose barb	23-0007	55	Axle	20-0007
11	Elbow	24-0005	56	Hub cap	33-0018
12	Hex bushing	23-0023	57	Bolt	27-0066
13	Hose assembly	15-0024	58	Roll pin	43-0002
14	Hex nipple	23-0012	59	Rear handle	7-0011
15	Elbow	24-0006	60	Engine-9 H.P. Briggs & Stratton Vanguard	1-0054
16	Tee-all female	23-0009	61	Pump mounts	13-0028
17	Close nipple	23-0003	62	Pump complete	3-0008
18	Hex nipple	23-0026	63	Flatwasher	28-0005
19	Garden hose swivel	23-0021	64	Lockwasher	29-0009
20	Garden hose gasket	26-0001	65	Hex nut	30-0008
21	Strainer cap	19-0024	66	Bolt	27-0070
22	Strainer gasket	26-0072		Bolt (through angle)	27-0072
23	Stainless steel screen	19-0015	67	Hex nut	30-0002
24	Strainer bowl	19-0025	68	Lockwasher	29-0006
	Strainer complete (includes items 21-24)	19-0004	69	Flatwasher	28-0002
25	O-ring	25-0123	70	Sheave-engine	10-0029
26	Quick connect socket	17-0004	71	Beltguard	6-0001
27	Hex nipple	23-0018	72	Grommet	33-0001
28	Unloader valve complete	8-0031	73	Nozzle, 0006	18-0013
29	Hex nipple	24-0031	73	Nozzle, 1506	18-0014
30	Manifold block	51-0001	73	Nozzle, 2506	18-0043
31	Lockwasher	29-0008	73	Nozzle, 4006	18-0044
32	Bolt	27-0116	74	Key motor shaft	43-0039
33	Front handle	7-0010	75	Key pump shaft	43-0048
34	Wand holder	20-0181			
35	Hex washer head screw	27-3061			
36	Bolt-full thread	27-0576			
37	Flatwasher	28-0023			
38	Tightner angle plate	13-0003			
39	Bolt	27-0117			
40	Pump tightener bracket with nut	13-0050			
41	Screw	27-8471			
42	Washer	29-0055			
43	Hex locknut	30-0157			
44	Isolator	14-0008			
45	Bolt	27-0068			



**Mi-T-M<sup>®</sup> CORPORATION**