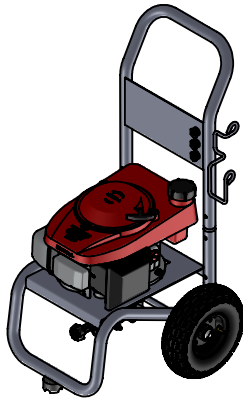


ITEM	PART NO	DESCRIPTION	QTY.
1	7103732	BASE PLATE WELDMENT #1, (H-SILVER)	1
2	7102122	SNAP BUTTON	2
3	100308	HONDA GCV160 (RED)	1
4	7103638	HANDLE ASSY, TOP LEFT GUN (SILVER)	1
5	90010	SUPER PONY 2400PSI VERTICAL PUMP STD EXT	1
5.1		PUMP, SUPERPONY 2400psi VERTICAL	1
5.2	7002257	INLET EXTENSION KIT	1
5.2.1		INLET EXTENSION	1
5.2.2		RING NUT	1
5.2.3		WATER FILTER INSERT	1
5.3	7001058	CHEMICAL INJECTION KIT	1
5.3.1		INJECTION FITTING	1
5.3.2		VALVE BALL Ø.188	1
5.3.3		VALVE SPRING TAPERED	1
5.4	7101359	THERMAL RELIEF VALVE-1/4" NPT	1
6	90010R	REFURB, MTPV93564 2400PSI VERTICAL PUMP	1
7	7103776	ENGINE MOUNT HARDWARE	1
7.1		BOLT, WHIZ 5/16-18 X 2.0	3
8	7103295	FOOT KIT	1
8.1		FOOT RUBBER OD 2" X 1.125 60 DUROMETER	1
8.2		SCREW 1/4-20 X 3/4 TORX PANHEAD	1
8.3		WASHER 5/16" X 1.0" OD FENDER WASHER	1
9	7103731	WHEEL KIT, 10 X 4	2
9.1		NUT, PAL 5/8 RUST PREV	1
9.2		WHEEL, BLACK 10/3.50 W. 5/8 BEARINGS	1
10	7103658	NOZZLE SET 2.75 3PC	1
11	7100389	GROMMET, 7/16 RUBBER	3
12	7103799	GUN 3200 PSI M22-14 M-IN X M22-14 F-OUT	1
13	7103550	LANCE, 16IN	1
14	7102037	CHEMICAL HOSE KIT	1
15	7103756	HOSE 1/4 25FT 2800	1
16	7103797	HOSE, 9/32 X 25FT	1
17	7102045	TOOL, NOZZLE CLEANING, UNIVERSAL	1
18	7102039	KEY SHAFT 3/16 X 1"	1
19	7103760	MANUAL, OPERATOR'S	1
20	7103761	BOX, DISPLAY	1

\* [

\* - NOT SHOWN



**NOTES:**

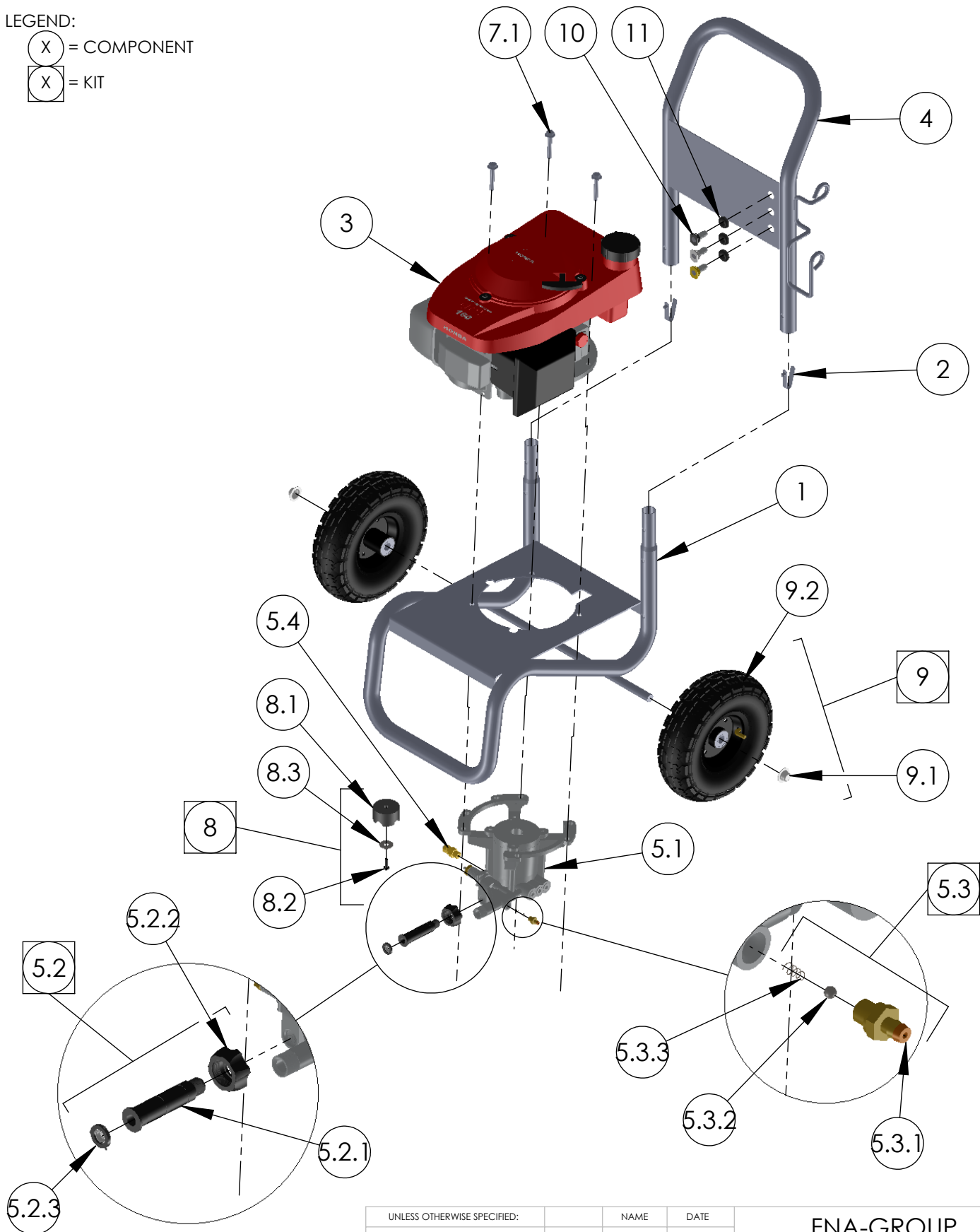
1. ALL WARRANTY REPAIRS WILL USE REFURBISHED PUMPS.

UNLESS OTHERWISE SPECIFIED:		NAME	DATE	FNA-GROUP	
DIMENSIONS ARE IN INCH [MM]		DRAWN	P.ELLIS		
TOLERANCES:		CHECKED		8/10/2010	PWH2600
ANGULAR: ±2deg		ENG APPR.			
TWO PL ±0.015 [.38]		MFG APPR.			
THREE PL ±0.005 [.13]		Q.A.			
MATERIAL AS NOTED		COMMENTS:			
FINISH N/A					
APPLICATION DO NOT SCALE DRAWING					
NEXT ASSY		USED ON		SIZE <b>A</b>	DWG. NO. 60476-S
				SCALE: N/A	WEIGHT: N/A
				REV. N/R	SHEET 1 OF 3

**PROPRIETARY AND CONFIDENTIAL**  
 THE INFORMATION CONTAINED IN THIS DRAWING IS THE SOLE PROPERTY OF SIMPSON-DELCO. ANY REPRODUCTION IN PART OR AS A WHOLE WITHOUT THE WRITTEN PERMISSION OF SIMPSON-DELCO IS PROHIBITED.

LEGEND:

- X = COMPONENT
- X = KIT

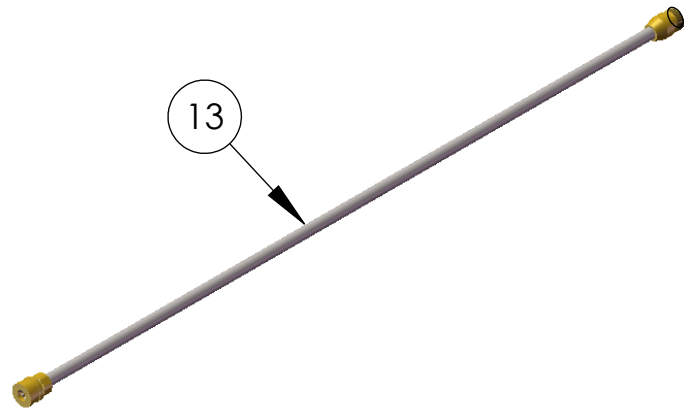


UNLESS OTHERWISE SPECIFIED:		NAME	DATE	<b>FNA-GROUP</b>	
DIMENSIONS ARE IN INCH [MM]		DRAWN	P.ELLIS		
TOLERANCES:		CHECKED		8/10/2010	<b>PWH2600</b>
ANGULAR: $\pm 2\text{deg}$		ENG APPR.			
TWO PL $\pm 0.015$ [.38]		MFG APPR.			
THREE PL $\pm 0.005$ [.13]		Q.A.			
MATERIAL		COMMENTS:			SIZE <b>A</b> DWG. NO. <b>60476-S</b> REV. <b>N/R</b> SCALE: N/A WEIGHT: N/A SHEET 2 OF 3
AS NOTED					
FINISH		DO NOT SCALE DRAWING			
APPLICATION		NEXT ASSY	USED ON		

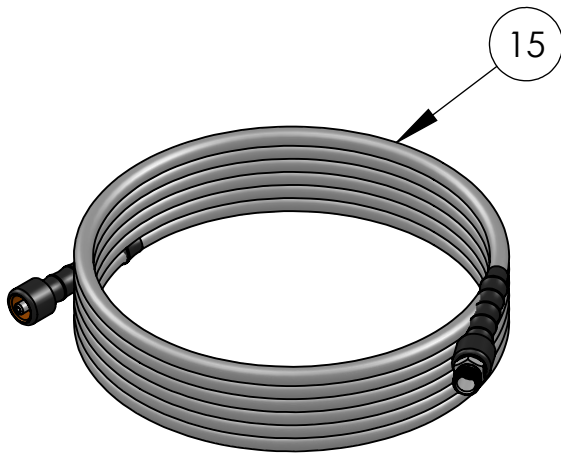
**PROPRIETARY AND CONFIDENTIAL**  
 THE INFORMATION CONTAINED IN THIS DRAWING IS THE SOLE PROPERTY OF SIMPSON-DELCO. ANY REPRODUCTION IN PART OR AS A WHOLE WITHOUT THE WRITTEN PERMISSION OF SIMPSON-DELCO IS PROHIBITED.



GUN 3200 PSI M22-14 M-IN X M22-14 F-OUT  
(PART NO. 7103799)



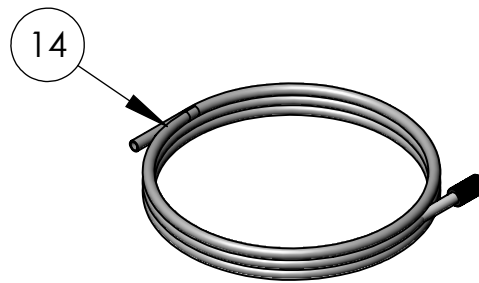
LANCE, 16IN  
(PART NO. 7103550)



HOSE 1/4 25FT 2800  
(PART NO. 7103756)



HOSE, 9/32 X 25FT  
(PART NO. 7103797)



CHEMICAL HOSE KIT  
(PART NO. 7102037)

UNLESS OTHERWISE SPECIFIED:		NAME	DATE	FNA-GROUP	
DIMENSIONS ARE IN INCH [MM]		DRAWN	P.ELLIS		
TOLERANCES:		CHECKED		8/10/2010	PWH2600
ANGULAR: ±2deg		ENG APPR.			
TWO PL ±0.015 [.38]		MFG APPR.			
THREE PL ±0.005 [.13]		Q.A.			
MATERIAL AS NOTED		COMMENTS:			
NEXT ASSY		FINISH	N/A		
USED ON		DO NOT SCALE DRAWING			
APPLICATION		SCALE: N/A			REV. N/R
PROPRIETARY AND CONFIDENTIAL		DWG. NO. 60476-S			SHEET 3 OF 3
THE INFORMATION CONTAINED IN THIS DRAWING IS THE SOLE PROPERTY OF SIMPSON-DELCO. ANY REPRODUCTION IN PART OR AS A WHOLE WITHOUT THE WRITTEN PERMISSION OF SIMPSON-DELCO IS PROHIBITED.		WEIGHT: N/A			