

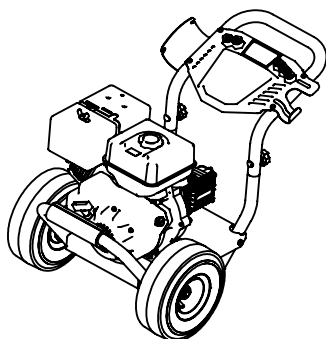
ITEM	PART NO	DESCRIPTION	QTY.
1	7107250	FRAME, ALUMINUM BASE SVC ASSY WITH LABELS	1
† 1.1		BASE TUBE, FORMED ALUMINUM FRAME 11.75" C-C	1
† 1.2		PLATE, HORIZONTAL BASE FRAME, AL, 11.75" C-C	1
† 1.3		SUB-FRAME, ALUMINUM HORIZONTAL 11.75" C-C	1
† 1.4		BRACKET, AXLE HORIZONTAL	2
† 1.5		AXLE, Ø .625 X 20.10	1
† 1.6		BOLT, 5/16"-18 x 2 1/4"	4
† 1.7		NUT, 5/16"-18 NYLOCK	5
† 1.8		WASHER, SADDLE 5/16 X 1.0 X 0.060	2
† 1.9		BOLT, 5/16"-18 X 3/4"	1
2	7107251	HANDLE, REAR SERVICE ASSEMBLY WITH LABELS	1
† 2.1		HANDLE TUBE, ALUMINUM 11.75" C-C	1
† 2.2		PLATE DASHBOARD 11.75" C-C	1
† 2.3		SCREW, 1/4-20 TORX HEAD	4
† 2.4		HOLDER, NOZZLE 2PC RUBBER STRIP	1
† 2.5		HOLDER, NOZZLE 3PC RUBBER STRIP	1
3	7107269	ENGINE, HONDA GX200 RED/WHITE	1
4	7107174	KEY, SHAFT 3/16 SQ X 1 1/4	1
5	7106573	PUMP, SERVICE ASSEMBLY	1
† 5.1		PUMP, 3200PSI@2.5GPM	1
† 5.2		CAP, UNLOADER COVER	1
† 5.3		BOLT, 5/16-24	4
† 5.4		WASHER, SPLIT 5/16	4
6	7105013	WHEEL, SERVICE KIT	2
† 6.1		WHEEL, 10 X 4 BLACK	1
† 6.2		WASHER, 5/8 FLAT	1
† 6.3		CLIP, E-TYPE 0.625 X 0.042	1
7	7107262	FOOT KIT, SERVICE KIT	2
† 7.1		FOOT, RECESSED RUBBER INSERT	1
† 7.2		SCREW, M6-1.0 X 31 TORX PANHEAD W/SHOULDER	1
† 7.3		WASHER, 5/16 X .045	1
† 7.4		SPRING, .875 X .600 WAVE TYPE	1
8	7103750	HARDWARE KIT, ENGINE MOUNT	1
† 8.1		BOLT, 5/16-18	4
† 8.2		NUT, WHIZ 5/16-18	4
9	7105474	HARDWARE KIT, PUMP MOUNT	1
† 9.1		BOLT, 5/16-24 HHCS	4
† 9.2		WASHER, 5/16 SPLIT LOCK	4
10	7104570	HARDWARE KIT, HANDLE MOUNT	2
† 10.1		BOLT, SADDLE 5/16-18	1
† 10.2		KNOB, HANDLE 5/16-18	1
11	7106671	HANDLE GRIP, KIT SIMPSON WHITE ON BLACK	1
12	7104818	NOZZLE SET, 2.8 5PC	1
13	7106275	GUN, 4500PSI @6.6GPM	1
14	7103550	LANCE, 16IN 1/4QC M22(F)	1
15	7107184	HOSE, 3700PSI 5/16 X 35FT GREY	1
16	7102207	SOAP HOSE AND FILTER KIT	1
* 17	7102045	TOOL, NOZZLE CLEANING UNIVERSAL	1
* 18	7107205	MANUAL, OPERATOR'S ALH3425 SPECIFIC	1
* 19	7107206	BOX, SHIPPING ALH3425 SPECIFIC	1

* NOT SHOWN

† NOT SOLD SEPARATELY

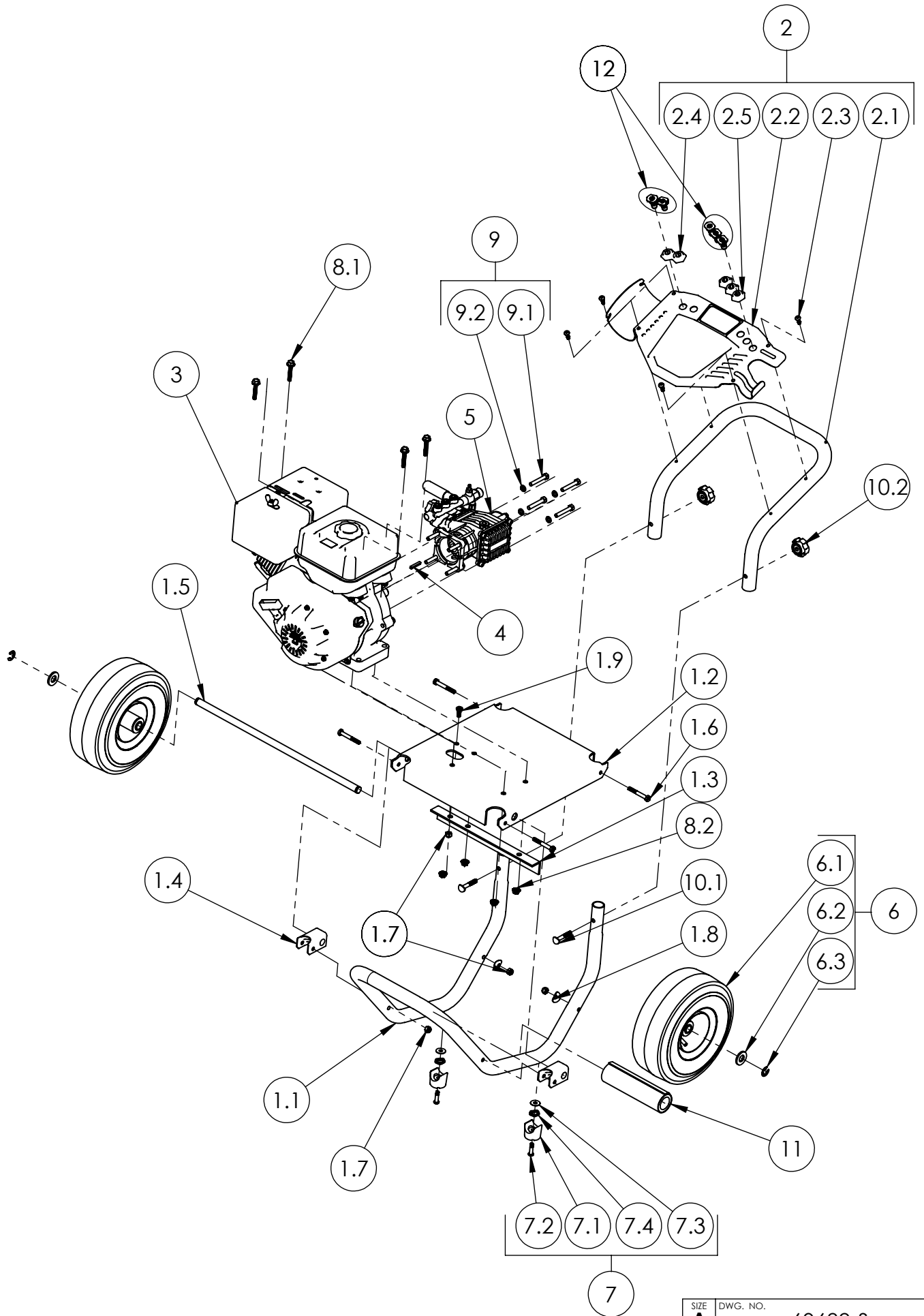
PUMP IDENTIFICATION TABLE

MACHINE SERIAL NO.	PUMP TYPE	PUMP PART NO.	PUMP KIT NO.
	PUMP, 3200PSI@2.5GPM	530001	7106573

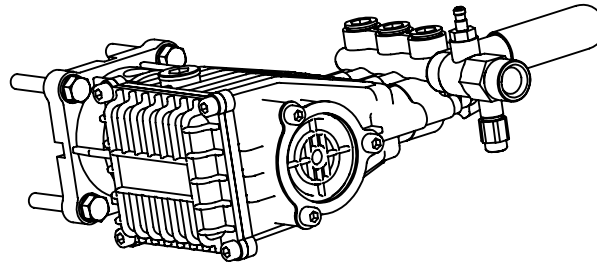


ONLY THE LATEST VERSION OF THE PUMP IS AVAILABLE FOR REPLACEMENT

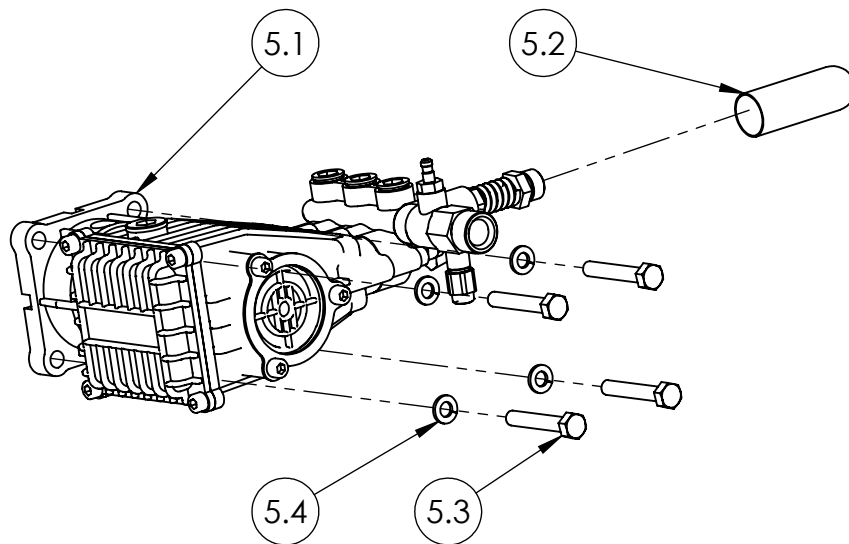
FNA-GROUP		
1265 INDUSTRIAL STREET, DECATUR, AR 72722		
TITLE: ALH3425		
PROPRIETARY AND CONFIDENTIAL THE INFORMATION CONTAINED IN THIS DRAWING IS THE SOLE PROPERTY OF FNA-GROUP. ANY REPRODUCTION IN PART OR AS A WHOLE WITHOUT THE WRITTEN PERMISSION OF FNA-GROUP IS PROHIBITED.		
SIZE	DWG. NO.	REV.
A	60689-S	A
SCALE:	N/A	ECN# DC13-0262 SHEET 1 OF 9



SIZE	DWG. NO.	REV.
A	60689-S	A
SCALE: N/A	ECN# DC13-0264	SHEET 2 OF 9



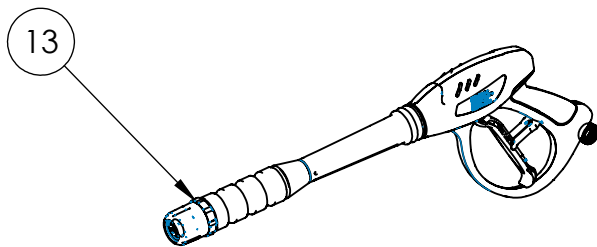
PUMP, SERVICE ASSEMBLY
PART NO. 7106573



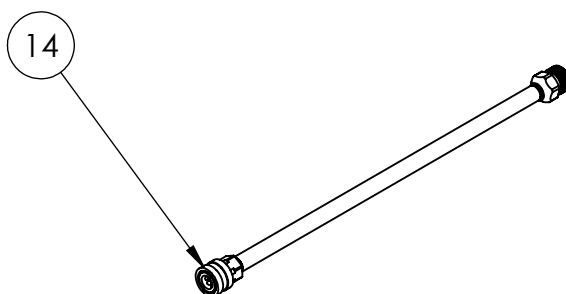
ITEM	PART NO	DESCRIPTION	QTY.
5.1	530001	PUMP, 3000PSI@2.3GPM	1
5.2		CAP, UNLOADER COVER	1
5.3		BOLT, 5/16-24	7
5.4		WASHER, SPLIT 5/16	4
* 4	7104174	BOLT, 5/16-24 X 1 HHCS	1

*

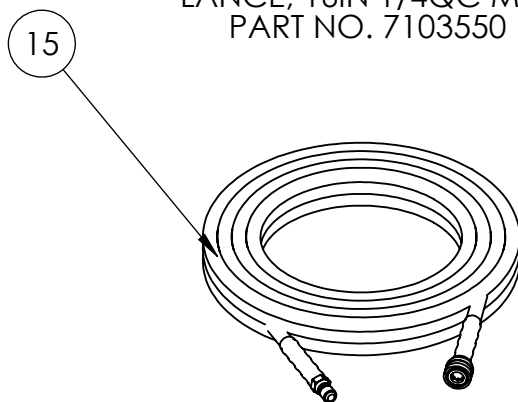
* NOT SHOWN



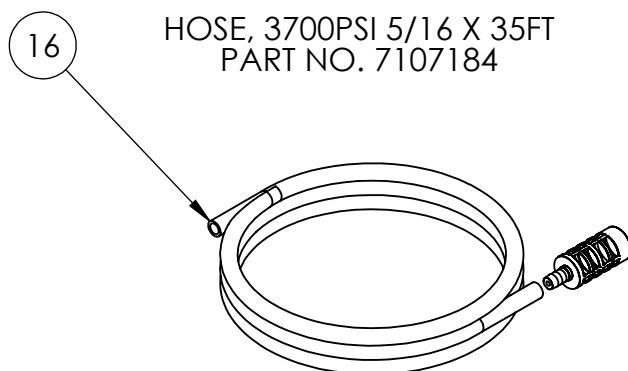
GUN, 4500PSI@6.6GPM M22(F)
PART NO. 7106275



LANCE, 16IN 1/4QC M22
PART NO. 7103550



HOSE, 3700PSI 5/16 X 35FT
PART NO. 7107184



SOAP HOSE AND FILTER KIT
PART NO. 7102207

SIZE A	DWG. NO. 60689-S	REV. A
SCALE: N/A	ECN# DC13-0264	SHEET 4 OF 9