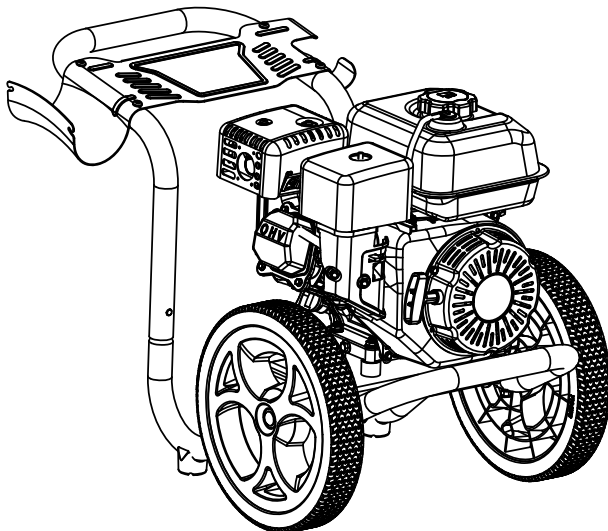


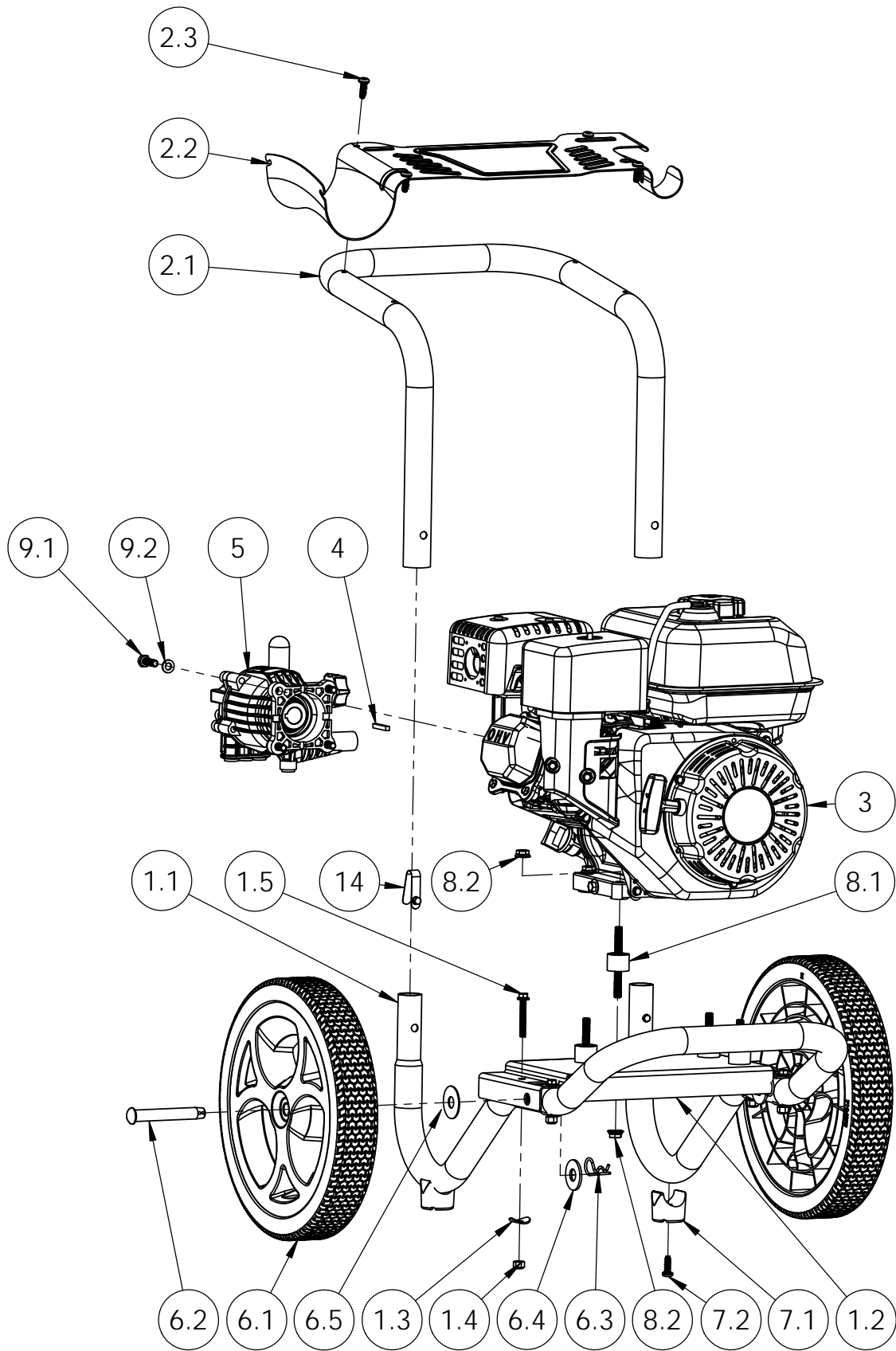
ITEM NO.	PART NO.	DESCRIPTION	QTY.
1	7108376	KIT, BASE FRAME SERVICE ASSEMBLY MS60753	1
† 1.1		TUBE, FRAME DOPP BENT 18GA BLACK	1
† 1.2		ENGINE PLATE, OPP BLACK	1
† 1.3		WASHER, SADDLE 5/16 X 1.0 X 0.060	4
† 1.4		NUT, 1/4"-20 NYLOCK	4
† 1.5		BOLT, 1/4"-20 x 1 3/4" SERRATED HHFB GR8	4
2	7108377	KIT, HANDLE SVC ASSY MS60753 W/DASHBOARD	1
† 2.1		TUBE, HANDLE OPP PUNCH-BENT 18GA BLACK	1
2.2	7108378	DASHBOARD ASSEMBLY MS 60753	1
† 2.3		SCREW, TORX PANHEAD 1/4"-20 x 3/4"	4
3	7108381	ENGINE, SVC KIT ASSY, SHINERAY 49 ST W/LABELS	1
† 3.1		ENGINE, 208CC SHINERAY 49ST BLK HORZ	1
† 3.2		KEY, SHAFT 3/16" x 3/16" x 1 1/4"	1
4	7104174	KEY, SHAFT 3/16" x 3/16" x 1 1/4"	1
5	7108379	PUMP, SVC ASSY 2800@2.4 W/O PB 11 DEG WOBBLE PLATE	1
† 5.1	520011	PUMP, 2800PSI@2.4GPM HORIZ-AX AL NO P-B	1
† 5.2		CAP, UNLOADER COVER 1 1/2" x 5/8" BLACK	1
† 5.3		BOLT 5/16"-24 x 1" HHCS GR5	4
† 5.4		WASHER, SPLIT-LOCK 5/16" RUST RESISTANT	4
† 5.5		KEY, SHAFT 3/16" x 3/16" x 1 1/4"	1
6	7106790	WHEEL KIT, 12" x 2"	2
† 6.1		POWERWASHER WHEEL 12"X2" POLYPRO/PVC BLK	1
† 6.2		AXLE, STUB .525" x 3.655" ROUND HEAD ZN	1
† 6.3		COTTER PIN, 3/8-5/8" x 3/32 x 2-3/8 STL	1
† 6.4		WASHER, 1/2" FLAT SAE THROUGH HARDENED	1
† 6.5		WASHER, 1/2 X 1.50 FENDER, ZINC PLATED	1
7	7105468	FOOT SERVICE KIT, RUBBER FOOT AND SCREW	2
† 7.1		FOOT, RUBBER 1.5OD FITTED TO 1.25 TUBE	1
† 7.2		SCREW, TORX PANHEAD 1/4"	1
8	7108382	HARDWARE KIT, ENGINE MOUNT VIBRATION DAMPING	1
† 8.1		VIBRATION MOUNT 3/4" X 1.0" DIA BLK	4
† 8.2		NUT, WHIZ 5/16"-18	8
9	7105474	HARDWARE KIT, PUMP MOUNTING	1
† 9.1		BOLT 5/16"-24 x 1" HHCS GR5	4
† 9.2		WASHER, SPLIT-LOCK 5/16" RUST RESISTANT	4
10	7107956	GUN, OEM FRONT ENTRY, OF341 3400 PSI	1
11	7108048	5-IN-1 NOZZLE WITH LANCE 0,15,25,40&SOAP	1
12	7106419	HOSE, MORFLEX 1/4" x 25' x 3100PSI M22(M) x M22(F)	1
13	7102207	SOAP HOSE AND FILTER KIT	1
14	7102122	BUTTON, SNAP	2
* 15	7102045	TOOL, NOZZLE CLEANING, UNIVERSAL	1
* 16	7108047	MANUAL, OPERATOR'S MS60753 MOD SPECIFIC	1
* 17	7108383	BOX, SVC KIT MS60753	1

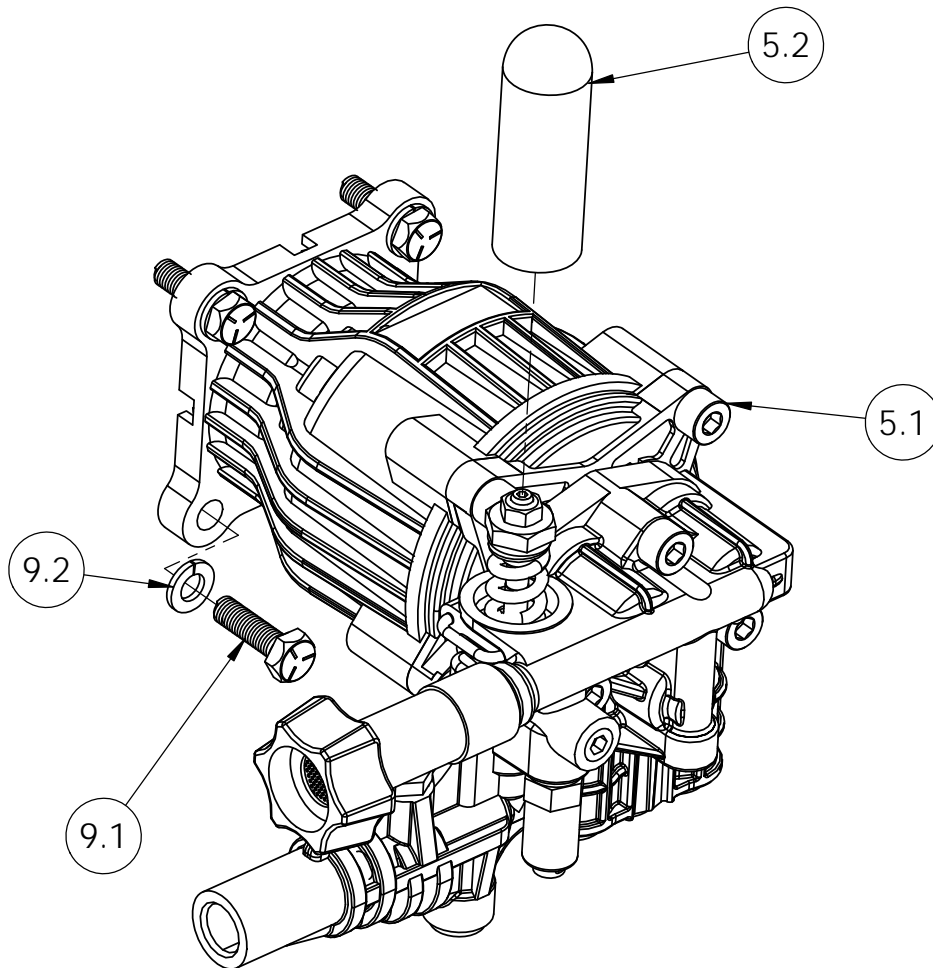
\* ITEM NOT SHOWN

† ITEM NOT SOLD SEPERATELY



NAME			DATE			FNA-GROUP		
DRAWN	KDB	6/11/15	1265 INDUSTRIAL STREET, DECATUR, AR 72722					
CHECKED	-	-	TITLE:					
ENG APPR.	-	-	MS60753 2800PSI @ 2.4GPM (49 STATE)					
MFG APPR.	-	-						
O.A. APPR.	-	-						
SERVICE APPR.	-	-						
PROPRIETARY AND CONFIDENTIAL THE INFORMATION CONTAINED IN THIS DRAWING IS THE SOLE PROPERTY OF FNA-GROUP. ANY REPRODUCTION IN PART OR AS A WHOLE WITHOUT THE WRITTEN PERMISSION OF FNA-GROUP IS PROHIBITED.								
SIZE	DWG. NO. 60753		REV. A			SHEET 1 OF 9		
SCALE: N/A			ECN# -			Version:		

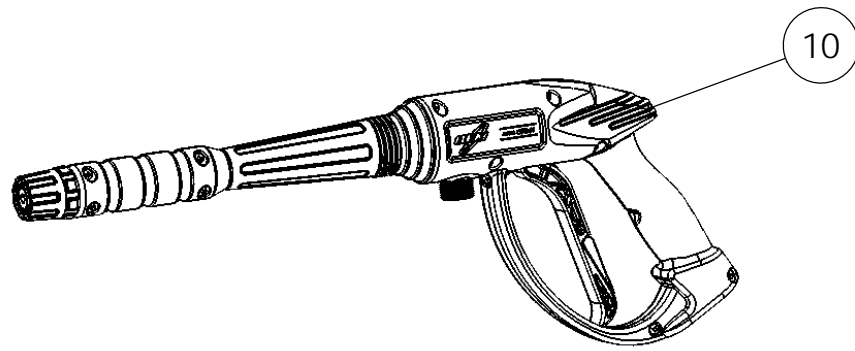




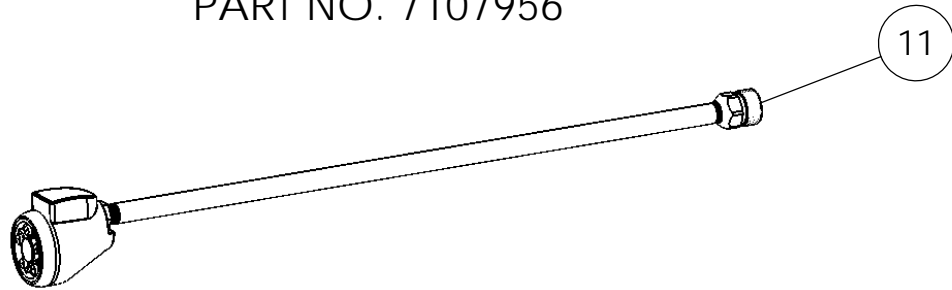
5 PUMP, SVC ASSY 2800@2.4 W/O PB 11 DEG WOBBLE PLATE  
PART NO. 7108379

ITEM NO.	PART NO.	DESCRIPTION	QTY.
5.1	520011	PUMP, 2800PSI@2.4GPM HORIZ-AX AL NO P-B	1
5.2		CAP, UNLOADER COVER 1 1/2" x 5/8" BLACK	1
9.1		BOLT 5/16"-24 x 1" HHCS GR5	4
9.2		WASHER, SPLIT-LOCK 5/16" RUST RESISTANT	4
* 4	7104174	KEY, SHAFT 3/16" x 3/16" x 1 1/4"	1

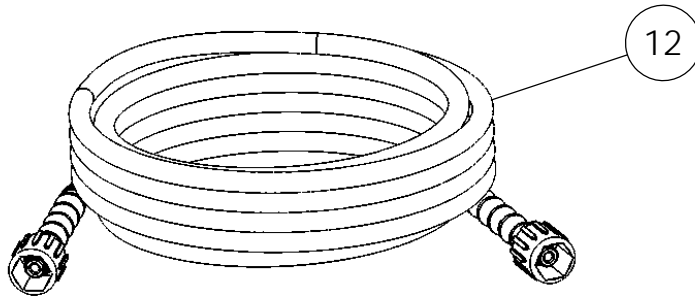
\* NOT SHOWN



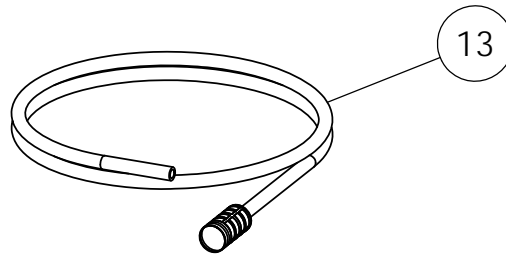
GUN, OEM FRONT ENTRY, OF341 3400 PSI  
PART NO. 7107956



5-IN-1 NOZZLE WITH LANCE 0,15,25,40&SOAP  
PART NO. 7108048

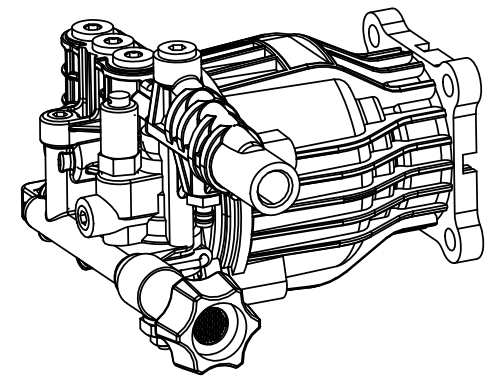
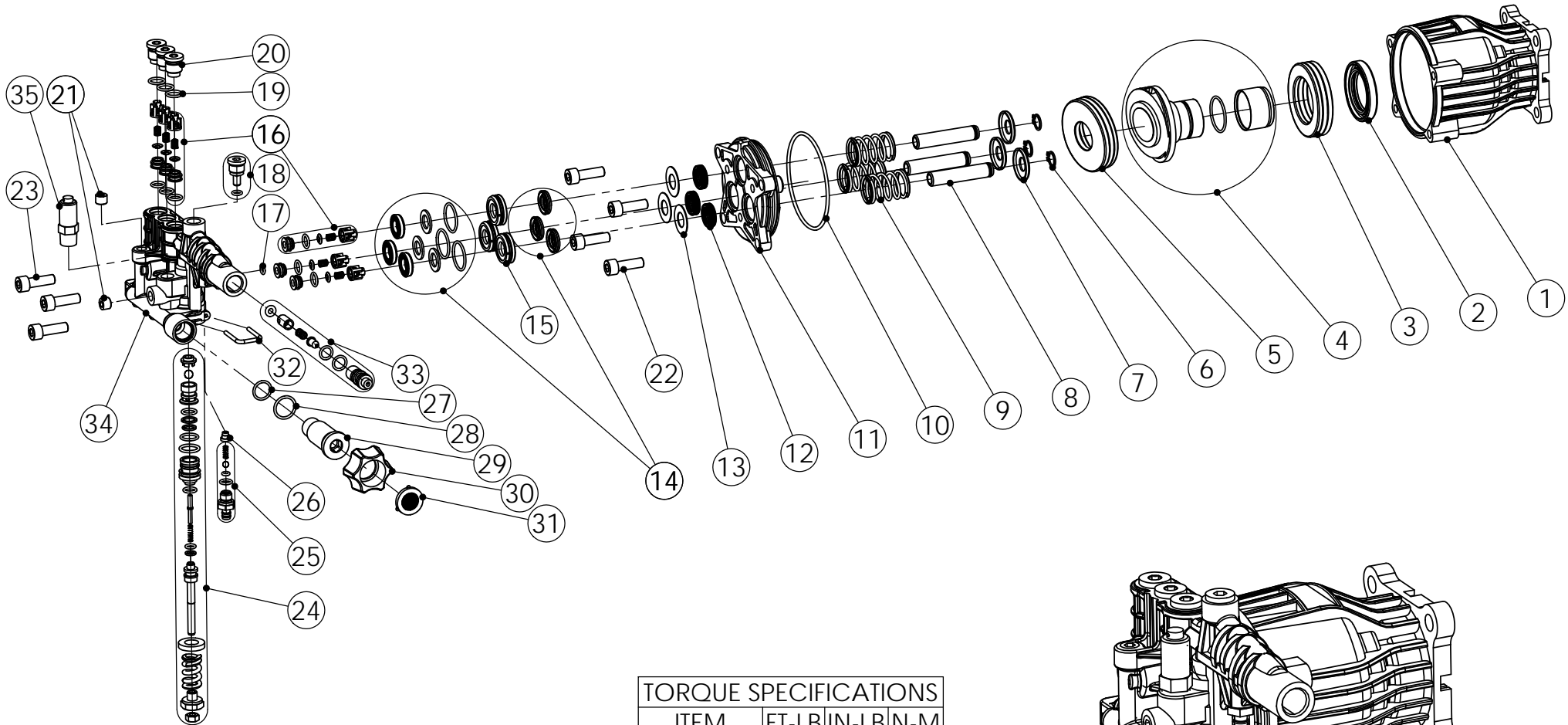


HOSE, MORFLEX 1/4" x 25' x 3100PSI M22(M) x M22(F)  
PART NO. 7106419



KIT, SOAP HOSE & FILTER  
PART NO. 7102207

PUMP, 2800PSI@2.4GPM HORIZ-AX AL NO P-B  
PART NO. 520011

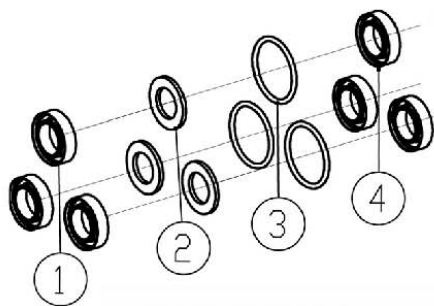


TORQUE SPECIFICATIONS			
ITEM	FT-LB	IN-LB	N-M
18	13	159	18
20	13	159	18
22	16	195	22
23	18	221	25
25	10	115	13
29	13	159	18



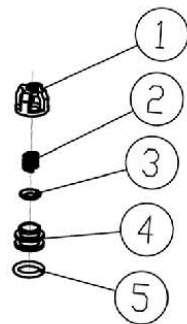
12 PART NO. 7105741

OIL SEAL KIT		
ITEM	QTY	DESCRIPTION
1	3	SEAL, OIL



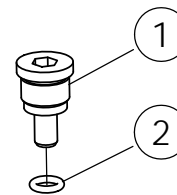
14 PART NO. 7106627

WATER SEAL KIT		
ITEM	QTY	DESCRIPTION
1	3	HIGH PRESSURE SEAL
2	3	BACK RING
3	3	O-RING
4	3	LOW PRESSURE SEAL



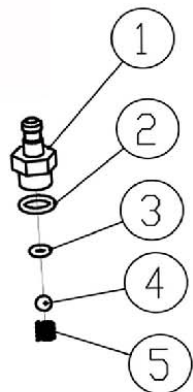
16 PART NO. 7104223

VALVE KIT		
ITEM	QTY	DESCRIPTION
1	6	VALVE CASE
2	6	SPRING
3	6	VALVE PLATE
4	6	VALVE SEAT
5	6	O-RING



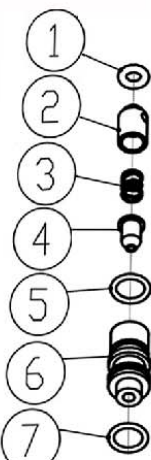
18 PART NO. 7108157

BOOST PLUG KIT		
ITEM	QTY	DESCRIPTION
1	1	BOOST PLUG
2	1	O-RING



25 PART NO. 7104228

SOAP INJECTOR KIT		
ITEM	QTY	DESCRIPTION
1	1	HOSE BARB
2	1	O-RING
3	1	O-RING
4	1	STEEL BALL
5	1	SPRING

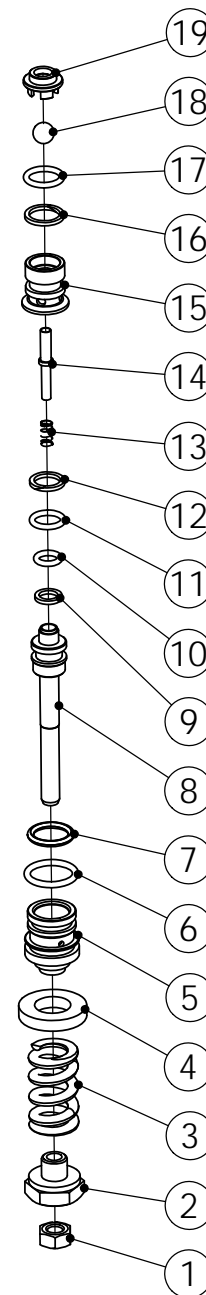


33 PART NO. 7106630

VENTURI TUBE KIT		
ITEM	QTY	DESCRIPTION
1	1	O-RING
2	1	CHECK VALVE CORE
3	1	CHECK VALVE SPRING
4	1	NOZZLE
5	1	O-RING
6	1	VENTURI TUBE
7	1	O-RING

24 PART NO. 7104226

UNLOADER KIT		
ITEM	QTY	DESCRIPTION
1	1	NUT
2	1	ADJUSTING NUT
3	1	SPRING
4	1	SEATING RING
5	1	VALVE SHEATH
6	1	O-RING
7	1	O-RING
8	1	CHECKING RING
9	1	O-RING
10	1	VALVE POLE
11	1	SPRING
12	1	CHECKING RING
13	1	O-RING
14	1	PIN
15	1	UPPER SEAT
16	1	CHECKING RING
17	1	O-RING
18	1	STEEL BALL
19	1	BACK SEAT

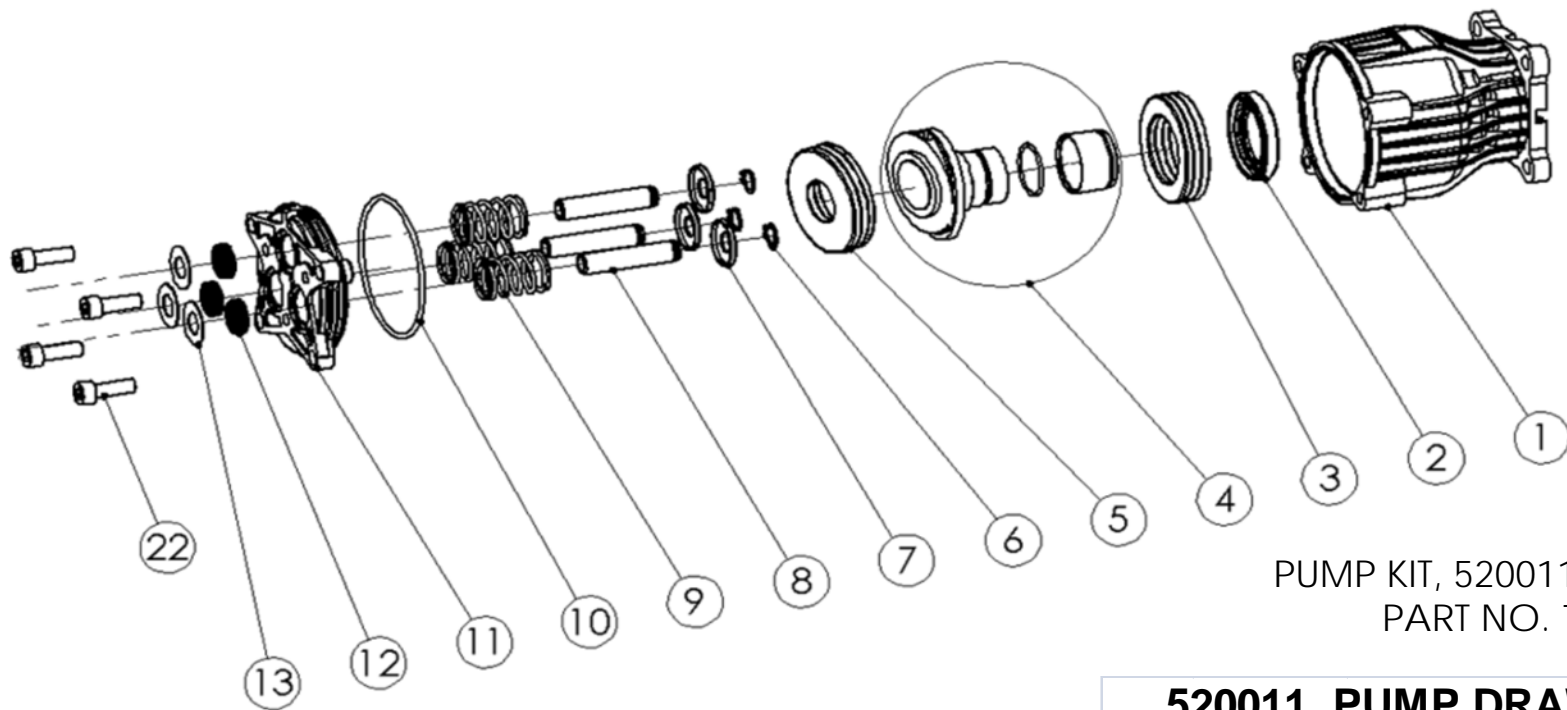


# 520011 PUMP DRAWING PARTS LIST

ITEM	PART NO.	DESCRIPTION	QTY PER PUMP	COMMENT
1		Case	1	
2		Oil Seal	1	
3		Thrusting Bearing 2	1	
4		Back Ring, Wobble Plate	1	Wobble Plate
		O-Ring	1	
		Wobble Plate	1	
5		Thrusting Bearing 1	1	
6		Clip	3	
7		Spring Base	3	
8		Plunger	3	
9		Spring, Plunger	3	
10		O-Ring	1	
11		Base, Plunger	1	
12	7105741	Oil Seal	3	Oil Seal Kit
13	7106642	Back Ring	3	
14	7106627	High Pressure Water Seal	3	Water Seal Kit
		Back Ring		
		O-Ring		
		Low Pressure Water Seal		
15	7106643	Back Ring	3	
16	7104223	Valve Case	6	Valve Kit (INLET AND OUTLET)
		Spring		
		Valve Plate		
		Valve Seat		
		O-Ring		
17	7106644	O-Ring	1	
18	7108157	Boost Plug	1	Boost Plug Kit
		O-Ring		
19	7106645	O-Ring	3	
20	7106646	Plug	3	
21	7106647	Plug	2	
22	7106648	Screw	3	
23	7106649	Screw	3	

# 520011 PUMP DRAWING PARTS LIST

ITEM	PART NO.	DESCRIPTION	QTY PER PUMP	COMMENT
24	7104226	Nut	1	Unloader Kit
		Adjusting Nut		
		Spring		
		Seating Ring		
		Valve Sheath		
		O-Ring		
		O-Ring		
		Checking Ring		
		O-Ring		
		Valve Pole		
		Spring		
		Checking Ring		
		O-Ring		
		Pin		
		Upper Seat		
		Checking Ring		
O-Ring				
Steel Ball				
Back Seat				
25	7104228	Nozzle	1	Soap Injector Kit
		O-Ring		
		O-Ring		
		Steel Ball		
Spring				
26	7106650	Venturi Tube Back Ring	1	
27	7106651	O-Ring	1	
28	7106652	O-Ring	1	
29	7106653	Inlet Connector	1	
30	7106654	Nut	1	
31	7000123	Filter Gasket	1	
32	7106655	U-Pin	1	
33	7106630	O-Ring	1	Venturi Tube Kit
		Checking Valve Core		
		Checking Valve Spring		
		Nozzle		
		O-Ring		
		Venturi Tube		
O-Ring				
34		Pump Head	1	
35	7101359	Thermal Relief Valve	1	



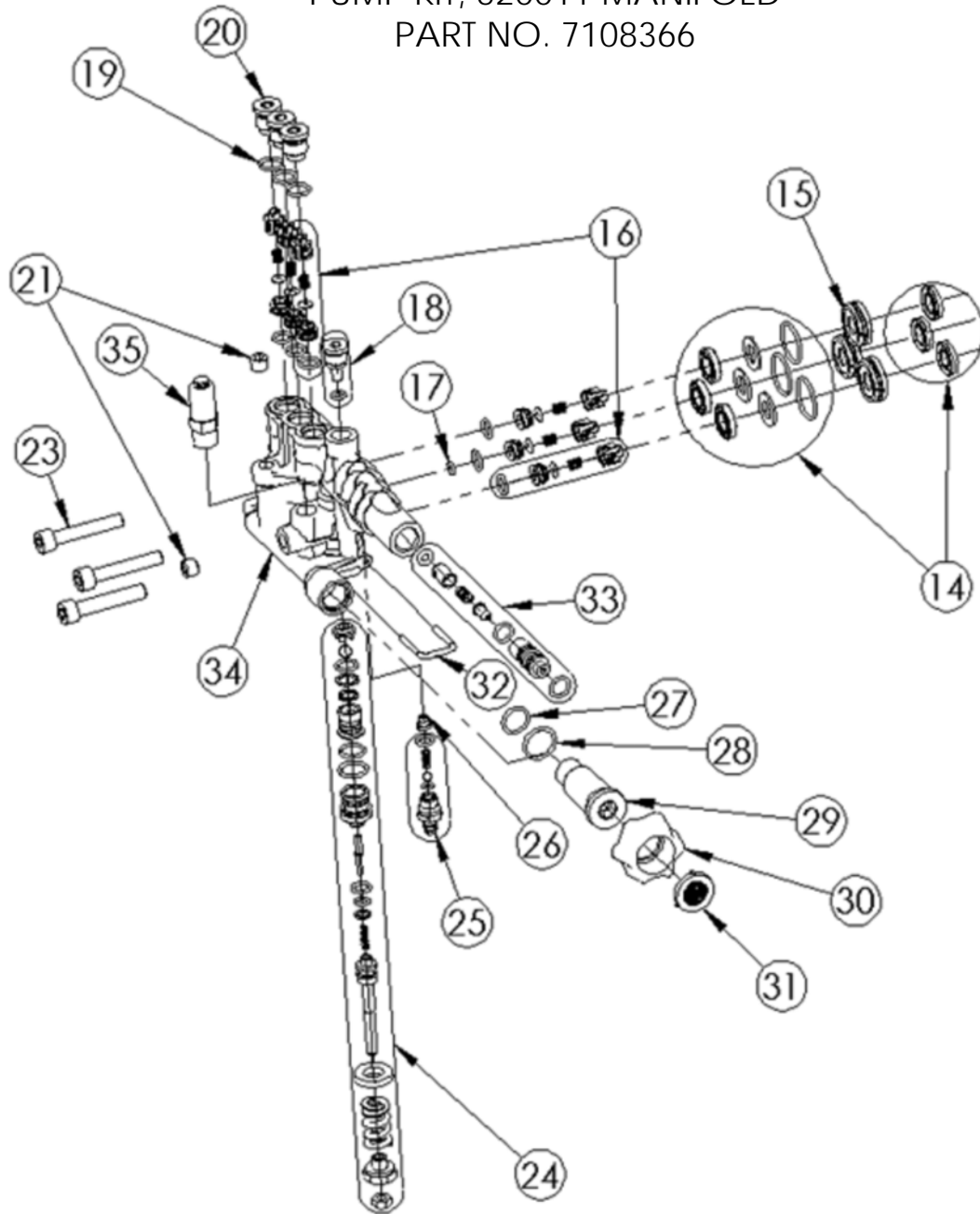
PUMP KIT, 520011 CRANKCASE  
PART NO. 7108403

### 520011 PUMP DRAWING PARTS LIST

ITEM	PART NO.	DESCRIPTION	QTY PER PUMP	COMMENT
1		Case	1	
2		Oil Seal	1	
3		Thrusting Bearing 2	1	
4		Back Ring, Wobble Plate	1	Wobble Plate
		O-Ring	1	
		Wobble Plate	1	
5		Thrusting Bearing 1	1	
6		Clip	3	
7		Spring Base	3	
8		Plunger	3	
9		Spring, Plunger	3	
10		O-Ring	1	
11		Base, Plunger	1	
12		Oil Seal	3	Oil Seal Kit
13		Back Ring	3	
22		Screw	4	



PUMP KIT, 520011 MANIFOLD  
PART NO. 7108366



**520011 PUMP EXPLOSION DRAWING PARTS LIST**

ITEM	PART NO.	PART NAME	QTY	COMMENT
14		High Pressure Water Seal	3	Water Seal Kit
		Back Ring		
		O-Ring		
		Low Pressure Water Seal		
15		Back Ring	3	
16		Valve Case	6	Valve Kit (INLET AND OUTLET)
		Spring		
		Valve Plate		
		Valve Seat		
		O-Ring		
17		O-Ring	1	
18		Boost Plug	1	Boost Plug Kit
		O-Ring		
19		O-Ring	3	
20		Plug	3	
21		Plug	2	
23		Screw	3	
24		Nut	1	Unloader Kit
		Adjusting Nut		
		Spring		
		Seating Ring		
		Valve Sheath		
		O-Ring		
		O-Ring		
		Checking Ring		
		O-Ring		
		Valve Pole		
		Spring		
		Checking Ring		
		O-Ring		
		Pin		
		Upper Seat		
		Checking Ring		
O-Ring				
Steel Ball				
Back Seat				
25		Nozzle	1	Soap Injector Kit
		O-Ring		
		O-Ring		
		Steel Ball		
		Spring		
26		Venturi Tube Back Ring	1	
27		O-Ring	1	
28		O-Ring	1	
29		Inlet Connector	1	
30		Nut	1	
31		Filter Gasket	1	
32		U-Pin	1	
33		O-Ring	1	Venturi Tube Kit
		Checking Valve Core		
		Checking Valve Spring		
		Nozzle		
		O-Ring		
		Venturi Tube		
O-Ring				
34		Pump Head	1	
35		Thermal Relief Valve	1	