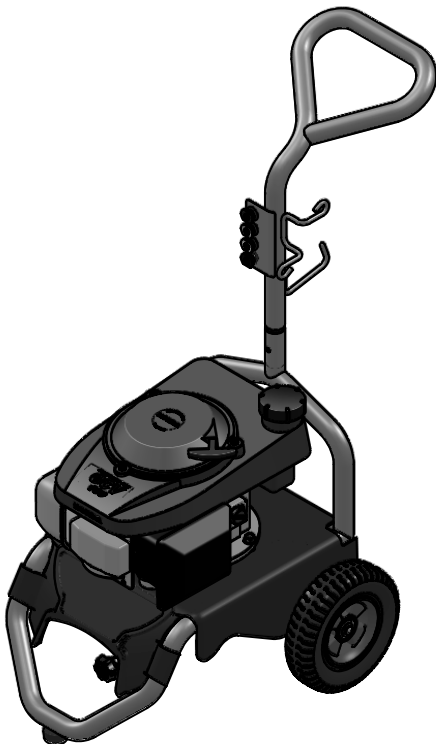


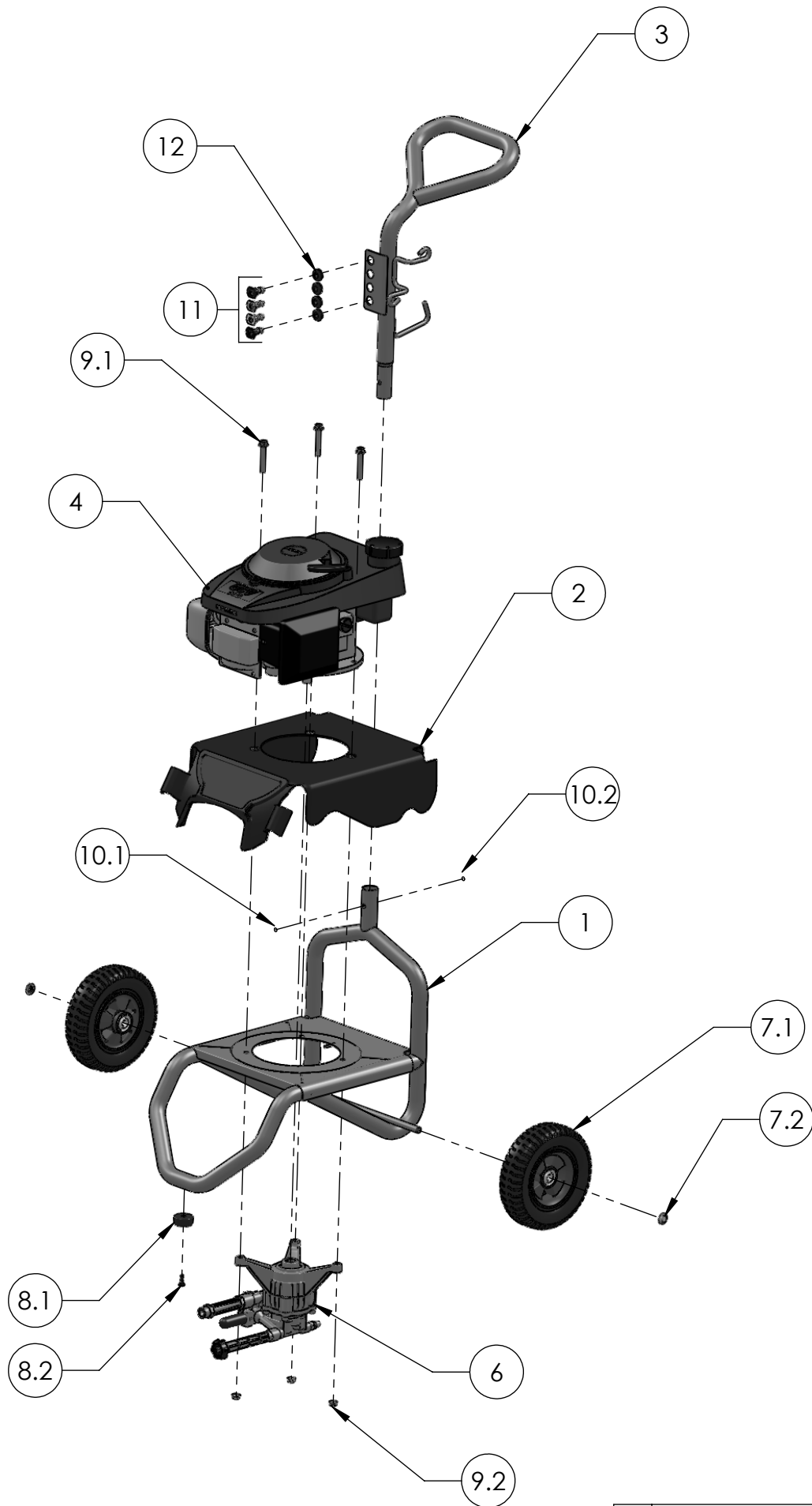
ITEM	PART NO	DESCRIPTION	QTY.
1	7104767	FRAME, BASE SILVER	1
2	7104568	PLASTIC COVER WITH LABELS	1
3	7104034	HANDLE ASSY, SILVER	1
4	7106479	ENGINE KIT, HONDA GCV160 W/KEY AND LABELS	1
5	7104174	KEY, SHAFT	1
6	7105993	PUMP KIT, PUMP VERTICAL 2400 PSI @2.0 GPM	1
†	6.1	PUMP, VERTICAL 2400PSI @ 2.0GPM	1
†	6.2	7104122 CAP, BLACK VINYL	1
†	6.3	7101359 THERMAL RELIEF VALVE	1
†	6.4	WASHER, 5/16	1
†	6.5	BOLT, 5/16-18	1
†	7	7104569 WHEEL KIT, SVC ASSY	2
†	7.1	WHEEL, 8-5/8" X 2.50"	1
†	7.2	PAL NUT, 1/2"	2
†	8	7103292 FOOT KIT, SERVICE KIT	2
†	8.1	FOOT, RUBBER 1.5 X 5/16	1
†	8.2	SCREW, 1/4-20 TORX PANHEAD	1
†	9	7104203 HARDWARE KIT, ENGINE MOUNTING	1
†	9.1	BOLT, FLANGE 5/16-18	3
†	9.2	NUT, WHIZ 5/16-18	3
	10	7104570 HARDWARE KIT, HANDLE MOUNT	1
	11	7104774 NOZZLE, SET 2.5	1
	12	7100389 GROMMET, 7/16 RUBBER	4
	13	7104847 GUN, 3500PSI 5GPM M22(M) X M22(F)	1
	14	7103550 LANCE, 16IN - 1/4 QC, M22(M)	1
	15	7102768 HOSE, 1/4IN X 25FT X 3000PSI M22 X M22	1
	16	7101682 SOAP HOSE	1
*	17	7102045 TOOL, NOZZLE CLEANING, UNIVERSAL	1
*	18	7104770 OWNERS MANUAL, S2700H	1
*	19	7104769 BOX, SHIPPING S2700H	1

* NOT SHOWN
† NOT SOLD SEPARATELY

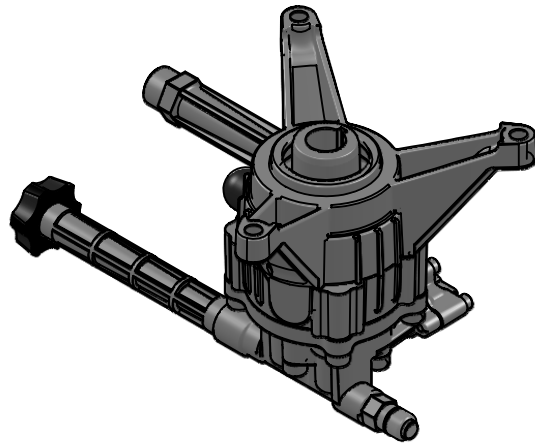


PUMP IDENTIFICATION TABLE	
PUMP PART NO.	PUMP KIT NO.
7104090	7105923

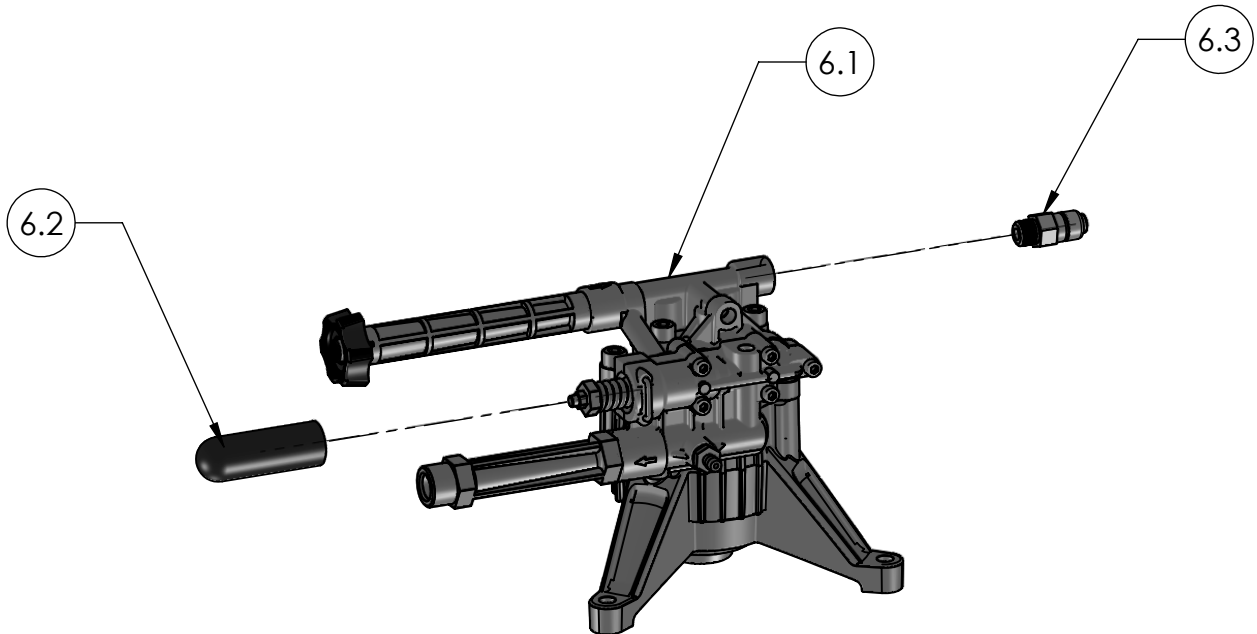
FNA-GROUP			1265 INDUSTRIAL STREET, DECATUR, AR 72722	
DRAWN	NAME	DATE	TITLE:	
CHECKED	MG	3/05/2013		
ENG APPR.	JEW	3/05/2013		
MFG APPR.	-	-		
Q.A. APPR.	JP	3/05/2013		
SERVICE APPR.	DH	3/08/2013		
PROPRIETARY AND CONFIDENTIAL THE INFORMATION CONTAINED IN THIS DRAWING IS THE SOLE PROPERTY OF FNA-GROUP. ANY REPRODUCTION IN PART OR AS A WHOLE WITHOUT THE WRITTEN PERMISSION OF FNA-GROUP IS PROHIBITED.			SIZE DWG. NO. A 60573-S-A	REV. A
SCALE: N/A			ECN# DC13-0050	SHEET 1 OF - 9



SIZE	DWG. NO.	REV.
A	60573-S-A	A
SCALE: N/A	ECN# DC13-0030	SHEET 2 OF - 9

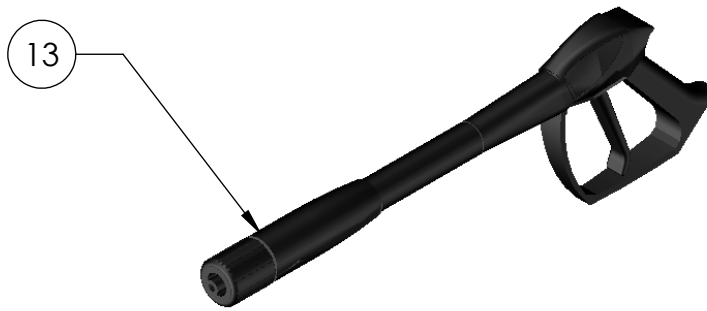


PUMP, VERTICAL 2400PSI @ 2.0GMP SERVICE KIT
PART NO. 7105993

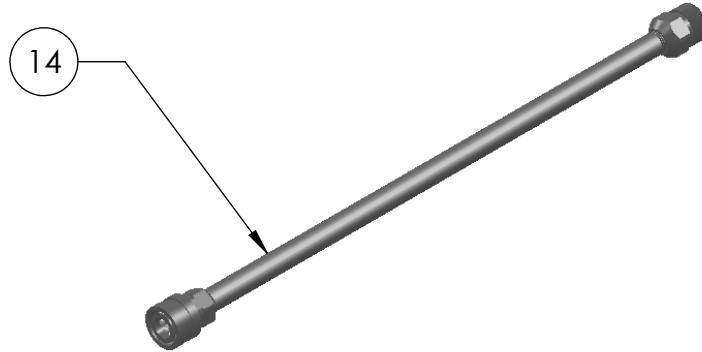


ITEM	PART NUMBER	DESCRIPTION	QTY
6.1	7104090	PUMP, VERTICAL 2400PSI @ 2.0GPM	1
6.2	7104122	THERMAL RELIEF VALVE	1
6.3	7101359	THERMAL RELIEF VALVE	1
* 6.4		WASHER, 5/16	1
* 6.5		BOLT, 5/16-18	1
* 5	7104174	KEY, SHAFT, 3/16SQ X 1-1/4	1

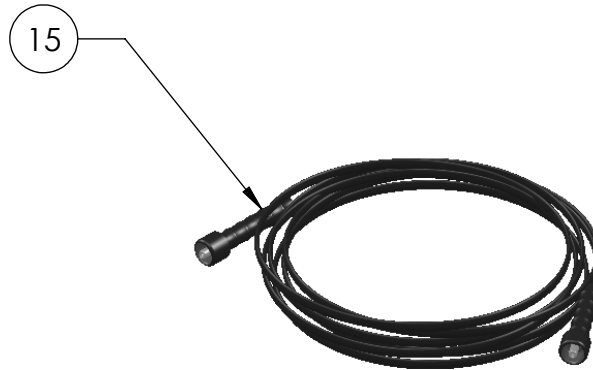
* NOT SHOWN



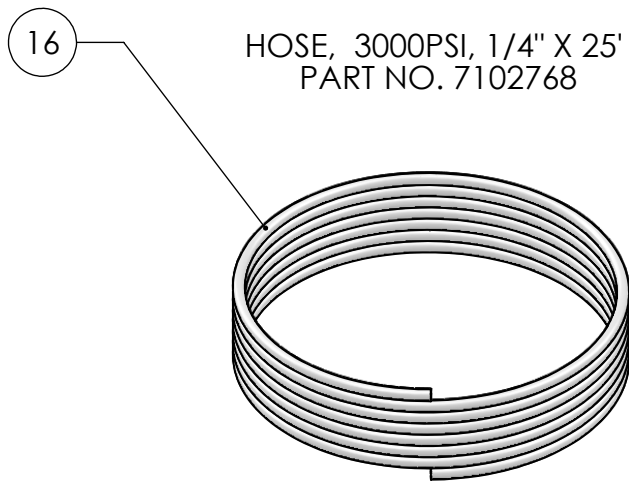
GUN, 3000PSI M22(M) IN, M22(M) OUT
PART NO. 7104847



LANCE, 16" QC(F), M22(M)
PART NO. 7103550

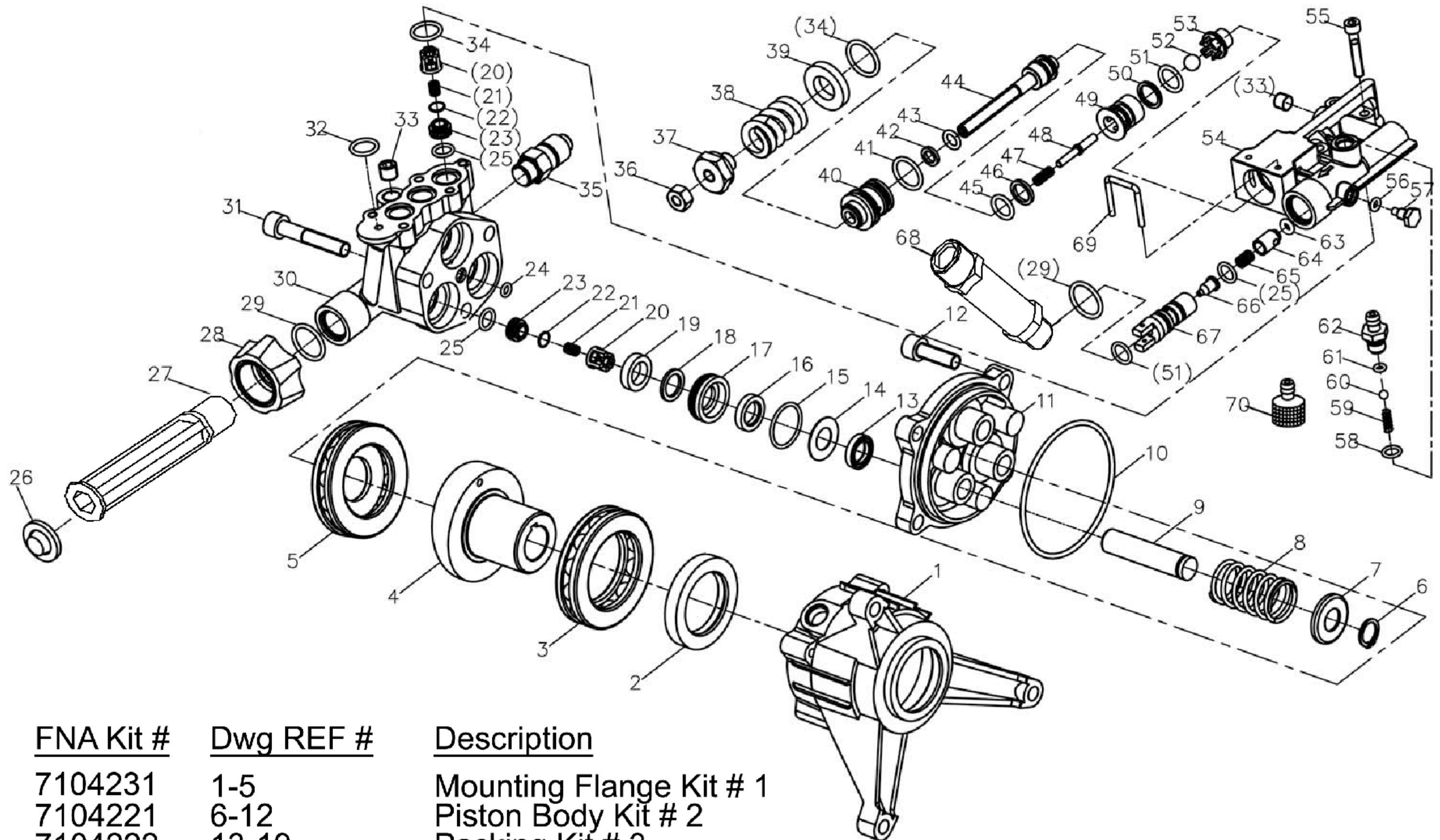


HOSE, 3000PSI, 1/4" X 25'
PART NO. 7102768



HOSE, SOAP CLEAR, 1/4" X 51"
PART NO. 7101682

SIZE	DWG. NO.	REV.
A	60573-S-A	A
SCALE: N/A	ECN# DC13-0030	SHEET 4 OF - 9



<u>FNA Kit #</u>	<u>Dwg REF #</u>	<u>Description</u>
7104231	1-5	Mounting Flange Kit # 1
7104221	6-12	Piston Body Kit # 2
7104222	13-19	Packing Kit # 3
7104223	20-23, 25	Valve Kit # 4
7104232	26-29	Water Inlet Kit # 5
7104225	24, 30-33	Pump Head Kit # 6
7104226	34, 36-48	Unloader Kit # 7
7104227	49-53	By-Pass Valve Kit # 8
7104228	58-62	Soap Injector Kit # 9
7104229	25, 33-67, 69	Manifold Kit # 10
7104233	29, 68	Outlet Extension Kit # 11

Pump # 7104090

2400 PSI @ 2.0 GPM

FNA Group, Inc
8 - 09 - 12
Rev A

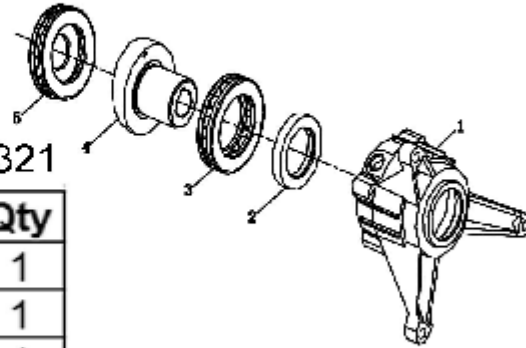
ENC : DC12 - 0088

SIZE C	DWG. NO. 60573-S-A	REV
WEIGHT:	SCALE: 1:1	SHEET 5 OF 9

7104090

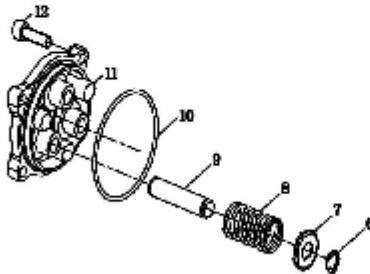
Kit 1 - Mounting Flange Kit - 7104321

Item	Part Description	Qty
1	Wobble Plate Case	1
2	Oil Seal	1
3	Thrust Bearing	1
4	Wobble Plate	1
5	Thrust Bearing	1



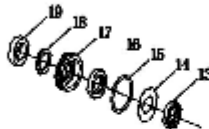
Kit 2 - Piston Body Kit - 7104221

Item	Part Description	Qty
6	Retainer Ring	3
7	Spring Clip	3
8	Backhaul Spring	3
9	Piston	3
10	O-Ring	1
11	Piston Seat	1
12	Screw	4



Kit 3 - Packing Kit - 7104222

Item	Part Description	Qty
13	Oil Seal	3
14	Washer	3
15	O-Ring	3
16	Subsidiary Seal Washer	3
17	Subsidiary Seal Seat	3
18	Water Seal Washer	3
19	Water Seal	3

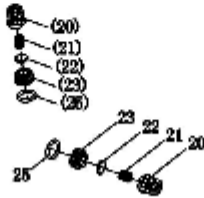


ENC : DC12 - 0088 Rev A

SIZE A	DWG. NO. 60573-S-A	REV.
SCALE: N/A	ECN# N/A	SHEET 6 OF -

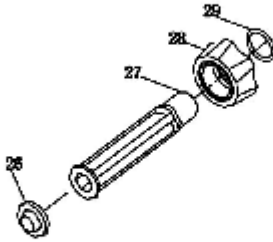
7104090

Kit 4 - Water Inlet Kit - 7104223



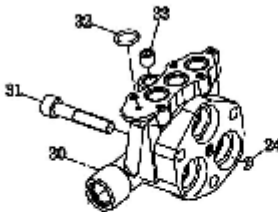
Item	Part Description	Qty
20	Valve Cover	6
21	Valve Spring	6
22	Valve Gasket	6
23	Valve Seat	6
25	O-Ring	6

Kit 5 - Water Inlet Kit - 7104232



Item	Part Description	Qty
26	Water Inlet Filter	1
27	Water Inlet Connector	1
28	Hand-Tight Nut	1
29	O-Ring	1

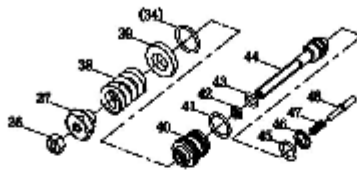
Kit 6 - Pump Head Kit - 7104225



Item	Part Description	Qty
24	O-Ring	1
30	Manifold	1
31	Screw	3
32	O-Ring	1
33	Block	1

ENC : DC12 - 008B Rev A

7104090



Kit 7 - Unloader Kit - 7104226

Item	Part Description	Qty
34	O-Ring	1
36	Nut	1
37	Regulating Nut	1
38	Regulating Spring	1
39	Washer	1
40	Valve Sheath	1
41	O-Ring	1
42	Close Retainer Ring	1
43	O-ring	1
44	Valve Rod	1
45	O-Ring	1
46	Uncork Retainer Ring	1
47	Peak Pin Spring	1
48	Peak Pin	1

Kit 8 - By-Pass Valve Kit - 7104227



Item	Part Description	Qty
49	Upper Seat	1
50	Uncork Retainer Ring	1
51	O-Ring	1
52	Steel Ball	1
53	Lower Seat	1

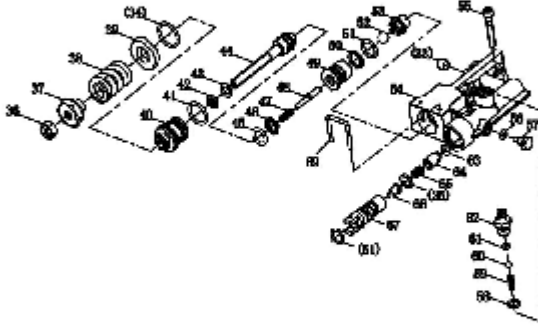
Kit 9 - Soap Injector Kit - 7104228



Item	Part Description	Qty
58	O-Ring	1
59	Injector Spring	1
60	Steel Ball	1
61	O-Ring	1
62	Injector	1

ENC : DC12 - 0088 Rev A

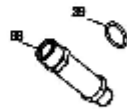
7104090



Kit 10 - Manifold Kit - 7104229

Item	Part Description	Qty
25	O-Ring	1
33	Block	1
34	O-Ring	3
51	O-Ring	1
54	Outlet Valve Body	1
55	Screw	5
56	O-Ring	1
57	Block	1
63	O-Ring	1
64	Unilateral Valve Core	1
65	Unilateral Valve Spring	1
66	Nozzle	1
67	Venturitube	1
69	U Pin	1
34	O-Ring	1
36	Nut	1
37	Regulating Nut	1
38	Regulating Spring	1
39	Fastness washer	1
40	Valve Sheath	1
41	O-Ring	1
42	Close Retainer Ring	1
43	O-Ring	1
44	Valve Rod	1
45	O-Ring	1
46	Uncork Retainer Ring	1
47	Peak Pin Spring	1
48	Peak Pin	1
49	Upper Seat	1
50	Uncork Retainer Ring	1
51	O-Ring	1
52	Steel Ball	1
53	Lower Seat	1
58	O-Ring	1
59	Injector Spring	1
60	Steel Ball	1
61	O-Ring	1
62	Injector	1

Kit 11 - Outlet Extension Kit - 7104233



Item	Part Description	Qty
29	O-Ring	1
68	Outlet Connector	1

ENC : DC12 - 0088 Rev A