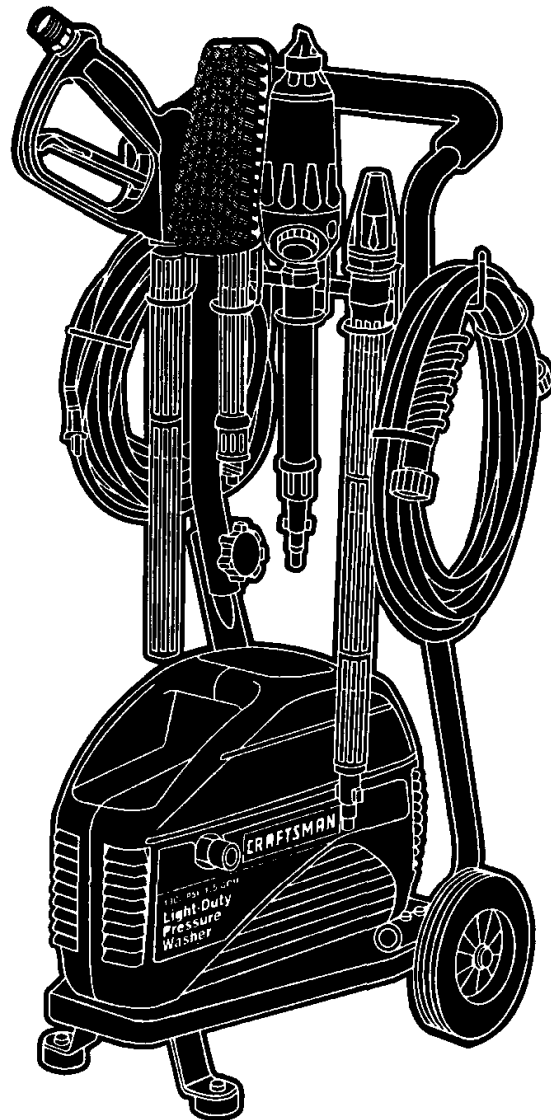


Mfg. No: 1279-0
580.760000, 1,300 PSI Craftsman



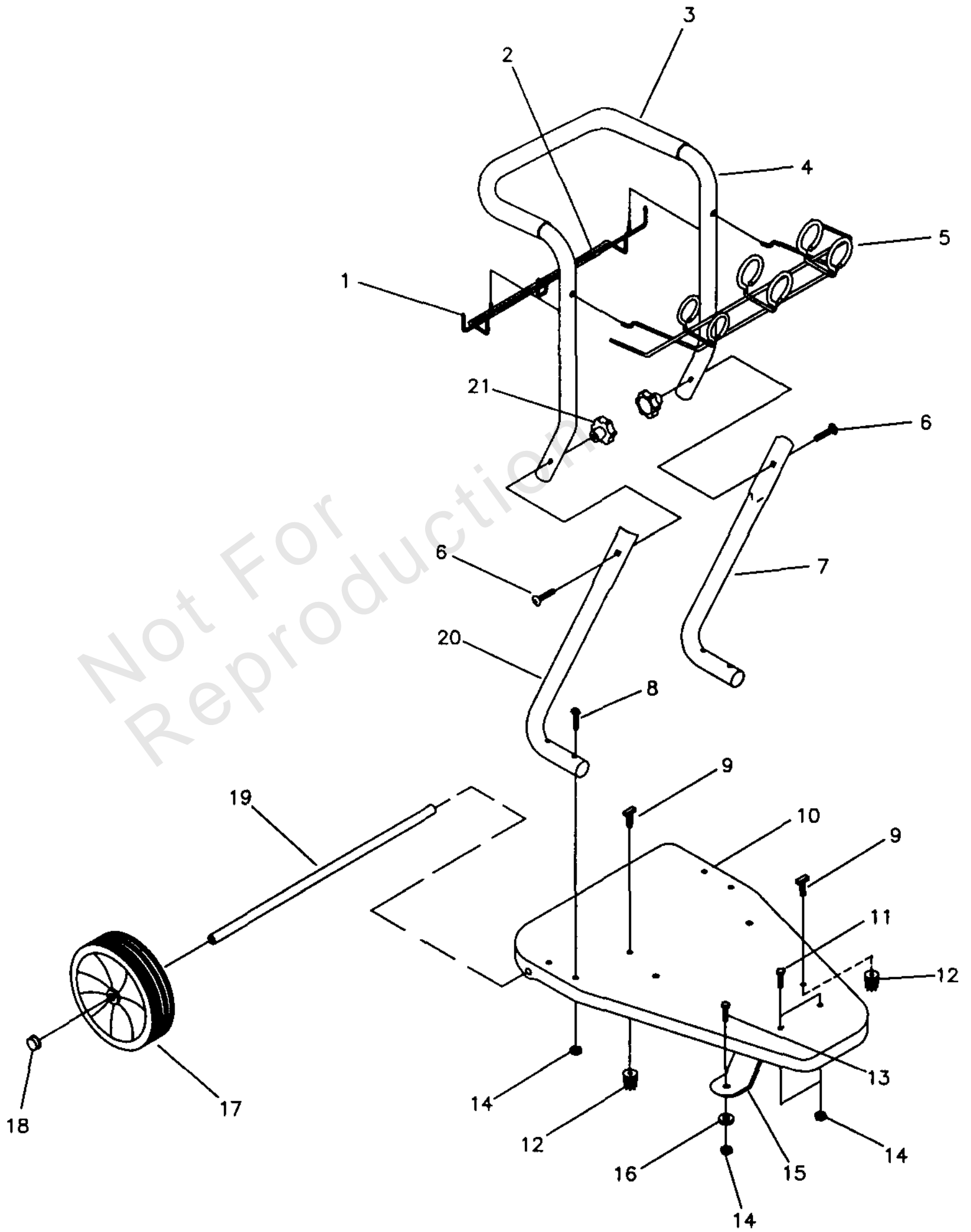
Model Components	Page
Handle & Base Assembly.....	4
Housing & Decals.....	6
Pump Assembly.....	8
Torque Specification Chart.....	10

Not For
Reproduction

Handle & Base Assembly

Note: Unless noted otherwise, use the standard torque specifications

Mfg. No: 1279-0



Handle & Base Assembly

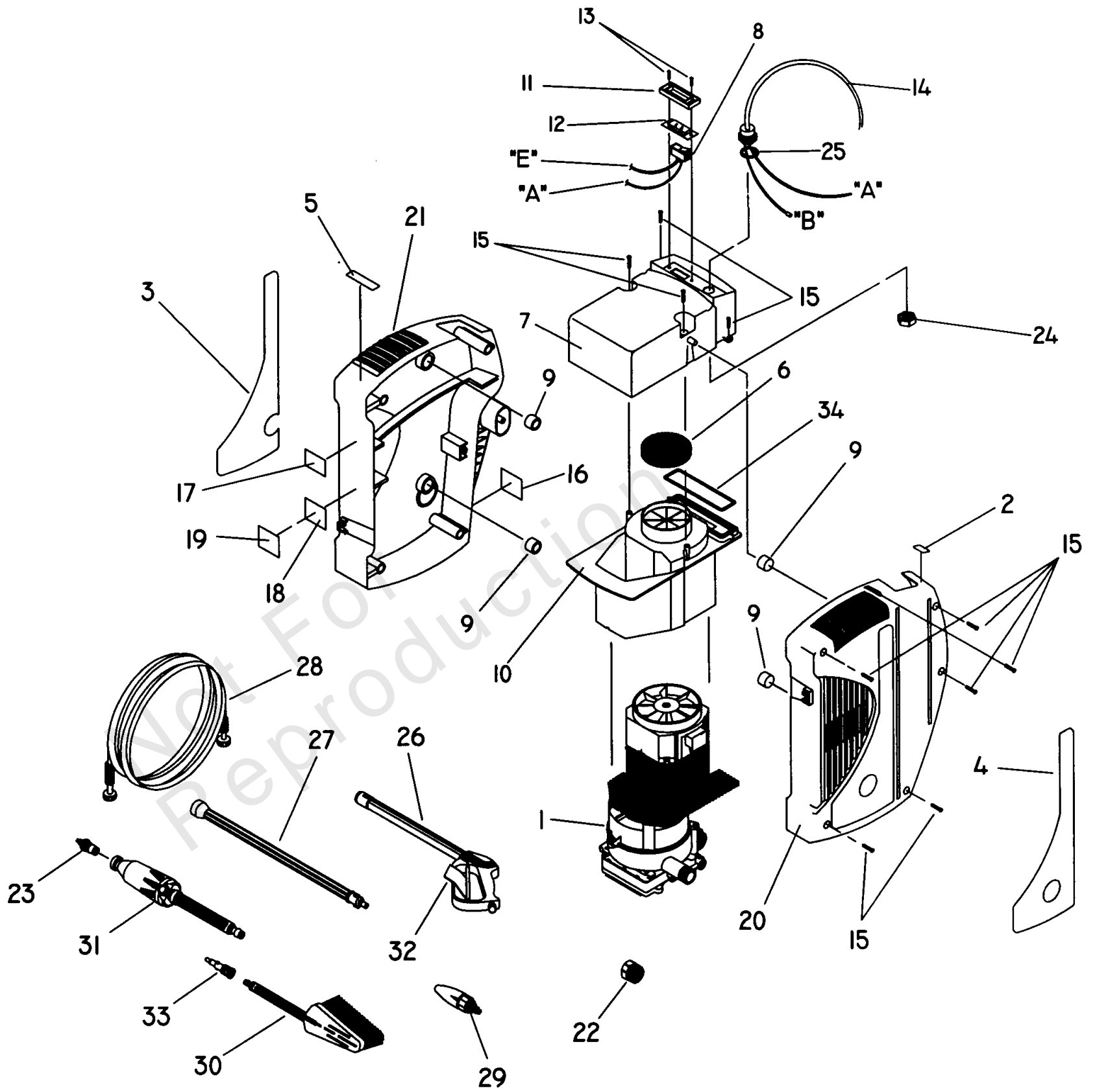
REF NO	PART NO	QTY	DESCRIPTION
1	A1721	3	CAP, Vinyl 3/16"
2	21467	1	HOLDER, Hose and Bottle
3	21520	1	HANDLE, Grip
4	99851	1	HANDLE
5	21176	1	HOLDER, Accessories
6	21892	2	BOLT, Carriage
7	99934	1	LEG, Left
8	21496	4	PPHMS, M6 - 1.0 x 30 Lg.
9	21498	2	BOLT, T-Head M6 - 1.0 x 15 Lg.
10	99682	1	BASE
11	43116	2	HHCS, M6 - 1.0 x 12 Lg.
12	21497	2	NUT, Wing
13	47411	2	HHCS, M6 - 1.0 x 16 Lg.
14	A1703	8	NUT, Nylock M6 - 1.08
15	21564	1	FOOT, Cart
16	87841	2	MOUNT, Donut
17	21499	2	WHEEL
18	75402A	2	PUSHNUT, 3/8"
19	21500	1	AXLE
20	99857	1	LEG, Right
21	21865	1	KNOB, Handle

Not For
Reproduction

Housing & Decals

Note: Unless noted otherwise, use the standard torque specifications

Mfg. No: 1279-0



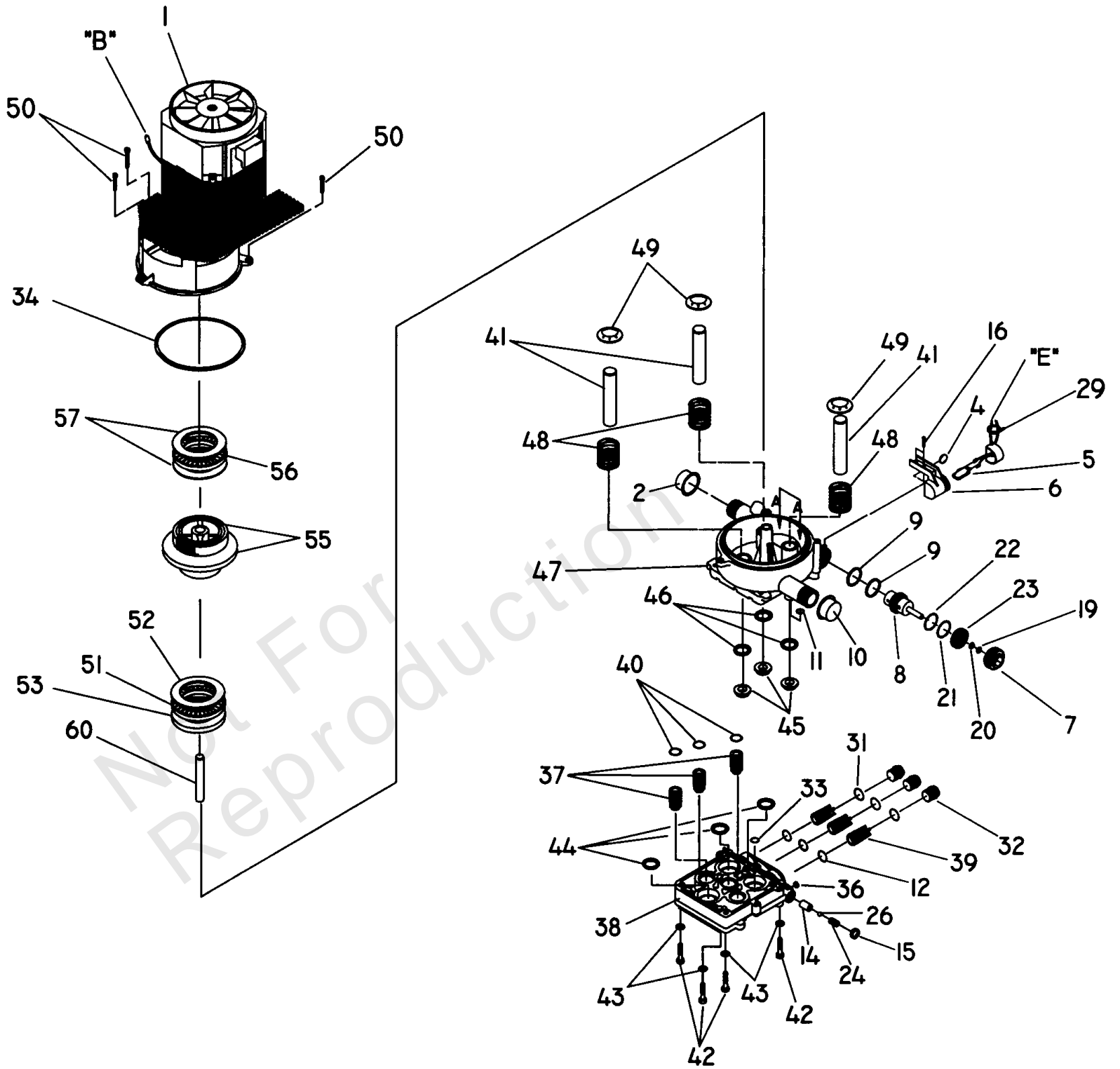
Housing & Decals

REF NO	PART NO	QTY	DESCRIPTION
1	-----	1	ASSY., Pump & Motor -(See "Pump Assembly" Illustration & Parts List)
2	B1415	1	DECAL, Branch Circuit
3	B3723	1	DECAL, Unit
4	21318	1	DECAL, Instructions
5	B3765	1	DECAL, 800 #
6	98806	1	FOAM, Air In, Fan-end
7	B1650	1	HOUSING, Switch Assy
8	20984	1	SWITCH, Rocker
9	98801	4	MOUNT, Rubber
10	B1566	1	COVER, Motor
11	20985	1	ENCLOSURE, Rocker Switch, Boot
12	20986	1	BOOT, Rocker Switch
13	84543B	2	SCREW, 35mm x 12mm Plastite
14	98805	1	ASSY., Power Cord
15	84358	10	SCREW, #6-19 x .75" Plastite
16	B3532	1	DECAL, User Guide
17	B1053	1	DECAL, ETL
18	B3664	1	DECAL, Data
19	79552	1	LAMINATE, Over
20	97694	1	HOUSING, Inlet
21	97695	1	HOUSING, Outlet
22	21424	1	CONNECTOR, Garden Hose
23	B2433	1	NOZZLE, Foamer
24	A1484	1	NUT, Strain Relief, Lock
25	A1485	1	SEAL RING, Strain Relief
26	21336	1	GUN, Spray
27	21337	1	ASSY., Extension Lance
28	B3337	1	HOSE, High Pressure
29	B1300D	1	NOZZLE, Turbo
30	88185	1	BRUSH, Utility
31	B2390	1	FOAMER
32	B1866	1	DECAL, EPW Gun
33	B1051	1	ADAPTER, Accessory
34	97835	1	"O" RING, Housing Seal
	7175187		Garden Hose Quick Connect -Optional Accessories Not Illustrated
	7175199		Rotating Brush -Optional Accessories Not Illustrated
	7176430		Broom Brush -Optional Accessories Not Illustrated
	7175116		&-Ring Repair Kit -Optional Accessories Not Illustrated
	7176403		Degreaser -Optional Accessories Not Illustrated
	7176402		Vehicle/Boat Wash -Optional Accessories Not Illustrated
	7176400		House Multi Purpose Wash -Optional Accessories Not Illustrated
	7176401		Deck Wash -Optional Accessories Not Illustrated

Pump Assembly

Note: Unless noted otherwise, use the standard torque specifications

Mfg. No: 1279-0



Pump Assembly

REF NO	PART NO	QTY	DESCRIPTION
1	B1514	1	ASSY, Motor Complete
2	97100	1	CAP, HP
4	21055	1	GROMMET, Rubber
5	20138	1	SWITCH, Auto
6	20928	1	HOUSING, Auto-Switch
7	20218	1	CAP, Retainer
8	B3384	1	PISTON ASSY, Kit
9	21525	2	WIPER, Piston Bore
10	B1124	1	CAP, inlet
11	97855	1	"O" RING, dia. 6.5 x 2.01mm
12	97934	3	"O" RING, Chk Valve dia. 12.4 x .78mm
14	B1960	1	SEAT, Ball
15	B2240	1	SCREW, Lock Socket
16	A1495	2	TAPTITE, M4-0.7 x 10mm SW MTG
19	21124	1	RING, Backup dia. 4.34 Id x 1.24
20	21123	1	"O" RING dia. 3.68 Id x 1.78 CS [.070"]
21	21126	1	RING, Backup dia. 26.0 ID
22	21125	1	"O" RING dia. 25.07 ID x 2.62 CS [.103"]
23	20217	1	STOP, Piston Return
24	A1130	1	SPRING, Pop-off Valve
26	97852	1	BALL, dia. 3/16" Pop-off Valve
29	28739A	1	TIE, Wrap
31	97840	3	"O" RING, Hi-press dia. 15.6 x 1.78mm
32	97841	3	CAP, Check Valve
33	97837	1	"O" RING, Hi-press dia. 9.2 xm 2.62mm
34	97835	1	"O" RING, Hsg Seal, dia. 82.2 x 2.62mm
36	76353A	1	PLUG, Taper dia. 5.4
37	B2664	3	ASSY., Inlet Check Valve
38	A1111A	1	PUMP, Head
39	97839	3	ASSY., Outlet Check Valve
40	97851	3	"O" RING, Piston dia. 10.82 x 1.78mm
41	97832	3	PISTON dia. 15 x 65mm
42	40946	4	BOLT, SHCS M6- 1.0 x 35mm
43	93873	4	LOCKWASHER, M6 Ribbed
44	93667	3	SEAL, Piston "U" Cup
45	97831	3	SPACER, Pilot
46	93680	3	SEAL, Oil-piston dia. 15 TC4
47	B1119	1	HOUSING, Piston
48	99503	3	SPRING, Piston Return
49	97830	3	RETAINER, Piston Spring
50	40945	3	BOLT, SHCS M6-1.0 x 20mm
51	97824A	1	BEARING, Needle dia. 40 x 60mm
52	97826	1	WASHER, Brg dia. 40 x 60 x 1mm
53	97825	1	WASHER, Brg dia. 36 x 60 x 6mm
55	B2663	1	ASSY., Cam/Gear
56	97822	1	BEARING, Ndle Thrust dia. 35 x 52mm
57	20610	2	WASHER, Brg dia. 35 x 55 x 3mm
60	97833	1	SHAFT, Idler Axial Cam

Hardware Identification & Torque Specifications

Torque Specification Chart								
FOR STANDARD METRIC MACHINE HARDWARE (Tolerance ± 20%)								
Property Class	5.6		8.8		10.9		12.9	
	Class 5.6		Class 8.8		Class 10.9		Class 12.9	
Size Of Hardware	in/lbs	Nm.	in/lbs	Nm.	in/lbs	Nm.	in/lbs	Nm.
	ft/lbs		ft/lbs		ft/lbs		ft/lbs	
M3	5.88	.56	13.44	1.28	19.2	1.80	22.92	2.15
M4	13.44	1.28	30.72	2.90	43.44	4.10	52.56	4.95
M5	26.4	2.50	60.96	5.75	5.97	8.10	7.15	9.7
M6	44.64	4.3	7.3	9.9	10.3	14	12.1	16.5
M7	5.2	7.1	12.1	16.5	16.9	23	19.9	27
M8	7.7	10.5	17.7	24	25	34	29	40
M10	15	21	35	48	50	67	59	81
M12	26	36	61	83	86.2	117	103	140
M14	42	58	101	132	136	185	162	220
M16	64	88	147	200	210	285	250	340
M18	89	121	202	275	287	390	346	470
M20	126	171	290	390	405	550	486	660
M22	169	230	390	530	559	745	656	890
M24	217	295	497	375	708	960	840	1140
M27	320	435	733	995	1032	1400	1239	1680
M30	435	590	995	1350	1401	1900	1681	2280
M33	590	800	1349	1830	1902	2580	2278	3090
M36	759	1030	1740	2360	2441	3310	2935	3980
M39	988	1340	2249	3050	3163	4290	3798	5150

Torque Specification Chart						
FOR STANDARD MACHINE HARDWARE (Tolerance ± 20%)						
Hardware Grade	No Marks		SAE Grade 5		SAE Grade 8	
	SAE Grade 2		SAE Grade 5		SAE Grade 8	
Size Of Hardware	in/lbs	Nm.	in/lbs	Nm.	in/lbs	Nm.
	ft/lbs		ft/lbs		ft/lbs	
8-32	19	2.1	30	3.4	41	4.6
8-36	20	2.3	31	3.5	43	4.9
10-24	27	3.1	43	4.9	60	6.8
10-32	31	3.5	49	5.5	68	7.7
1/4-20	66	7.6	8	10.9	12	16.3
1/4-28	76	8.6	10	13.6	14	19.0
5/16-18	11	15.0	17	23.1	25	34.0
5/16-24	12	16.3	19	25.8	29	34.0
3/8-16	20	27.2	30	40.8	45	61.2
3/8-24	23	31.3	35	47.6	50	68.0
7/16-14	30	40.8	50	68.0	70	95.2
7/16-20	35	47.6	55	74.8	80	108.8
1/2-13	50	68.0	75	102.0	110	149.6
1/2-20	55	74.8	90	122.4	120	163.2
9/16-12	65	88.4	110	149.6	150	204.0
9/16-18	75	102.0	120	163.2	170	231.2
5/8-11	90	122.4	150	204.0	220	299.2
5/8-18	100	136	180	244.8	240	326.4
3/4-10	160	217.6	260	353.6	386	525.0
3/4-16	180	244.8	300	408.0	420	571.2
7/8-9	140	190.4	400	544.0	600	816.0
7/8-14	155	210.8	440	598.4	660	897.6
1-8	220	299.2	580	788.8	900	1,244.0
1-12	240	326.4	640	870.4	1,000	1,360.0

The guides and ruler furnished below are designed to help you select the appropriate hardware.



Nut, M8

Thread Diameter (mm)

Inside Diameter (in) Threads per inch

Nut, 1/2-16



Screw, M8- 1.25 x 25

Thread Diameter (mm) Distance between threads (mm) Body Length (mm)

Body Diameter Threads per inch Body Length (in)

Screw, 1/2- 16 x 2



Standard Hardware Sizing

When a washer or nut is identified as 1/2" (M8), this is the *Nominal size*, meaning the *inside diameter* is 1/2 inch (8mm metric thread diameter); if a second number is present it represents the *threads per inch* (distance between threads).

When bolt or capscrew is identified as 1/2 - 16 x 2" (M8 - 1.25 x 50), this means the *Nominal size*, or body diameter is 1/2 inch (8mm metric thread diameter), the second number, 16, represents the *threads per inch*, (*distance between threads*). The final number is the body length of the bolt or screw, 2 inches (50mm).

NOTES

- These torque values are to be used for all hardware excluding: locknuts, self-tapping screws, thread forming screws, sheet metal screws and socket head setscrews.
- Recommended seating torque values for locknuts:
 - for prevailing torque locknuts - use 65% of grade 5 torques.
 - for flange whizlock nuts and screws - use 135% of grade 5 torques.
- Unless otherwise noted on assembly drawings, all torque values must meet this specification.

Common Hardware Types

Hex Head Capscrew



Washer



Carriage Bolt



Hex Nut

Wrench & Fastener Size Guide

1/4" Bolt or Nut Wrench—7/16"	5/16" Bolt or Nut Wrench—1/2"	3/8" Bolt or Nut Wrench—9/16"	7/16" Bolt or Nut Wrench (Bolt)—5/8" Wrench (Nut)—11/16"	1/2" Bolt or Nut Wrench—3/4"
M6 Bolt or Nut Wrench—10mm	M8 Bolt or Nut Wrench—13mm	M10 Bolt or Nut Wrench—17mm	M12 Bolt or Nut Wrench—19mm	M14 Bolt or Nut Wrench—22mm

CRAFTSMAN®