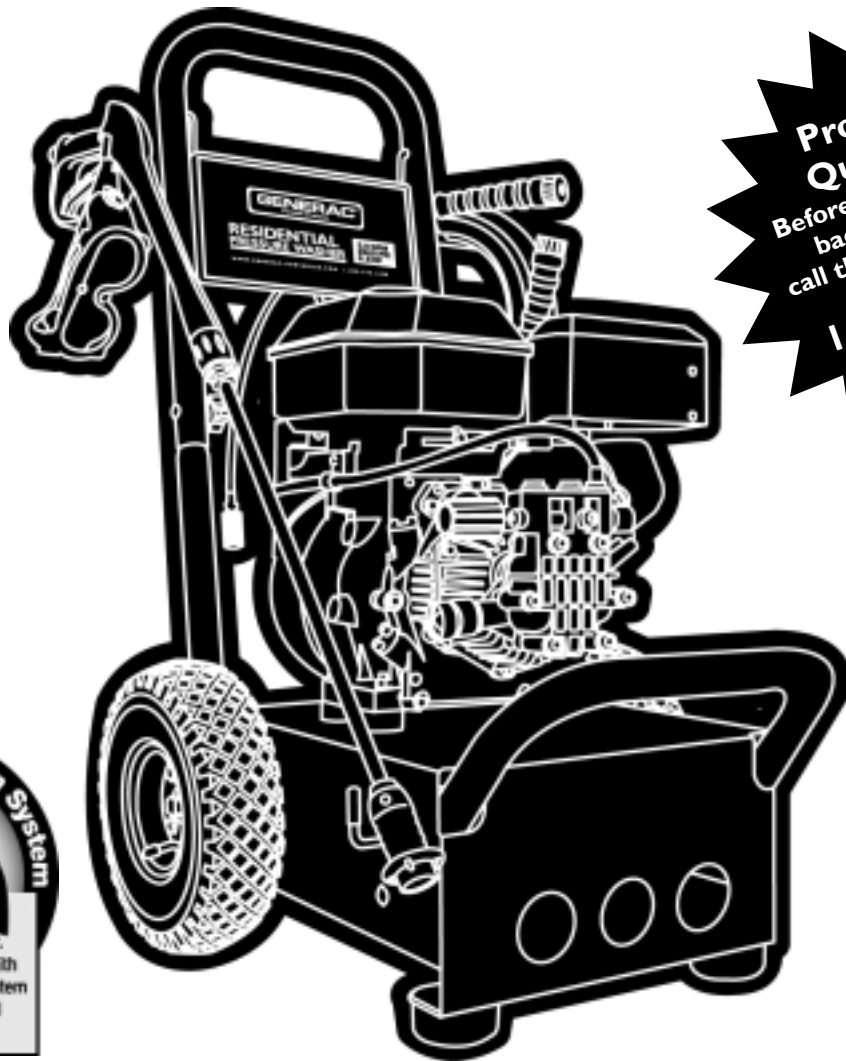


**GENERAC®**  
Portable Products

# 2600PSI

*High Pressure Washer Owner's Manual*



**Problems?  
Questions?**  
Before taking your unit  
back to the store,  
call the pressure washer  
helpline at  
**1-800-270-1408**  
**M-F 8-5 CT**



Model No. I441-0 (2,600 PSI High Pressure Washer) Manual No. B5814 Revision 2 (4/4/2001)

Visit our Generac website: [www.generac-portables.com](http://www.generac-portables.com)



This is the safety alert symbol. It is used to alert you to potential personal injury hazards. Obey all safety messages that follow this symbol to avoid possible injury or death.



## EQUIPMENT DESCRIPTION

**CONGRATULATIONS** on your purchase of a GENERAC high pressure washer. It has been designed, engineered and manufactured to give you the best possible dependability and performance.

This manual contains information for a high pressure washer that operates at 2,600 PSI at a flow rate of 3.0 gallons per minute. This high quality residential system features large 10" wheels, pump equipped with an automatic cool down system, chemical injection system, adjustable spray nozzle, safety goggles, heavy duty 25' hose, and more.

Please read and retain this manual. The instructions will enable you to assemble your unit without tools, and maintain your high pressure washer properly.

Every effort has been made to ensure that the information in this manual is both accurate and current. However, Generac reserves the right to change, alter or otherwise improve the product and its documentation at any time without prior notice.

Should you experience any problem you cannot easily fix, call the pressure washer helpline at **1-800-270-1408**.

## CUSTOMER RESPONSIBILITIES

- Read and observe the safety rules.
- Follow regular schedule in maintaining, caring for and using your high pressure washer.
- For off-season storage, review "Preparing The Unit For Storage" on page 13.

## SAFETY RULES

**CAUTION!** When setting up, transporting, adjusting or making repairs to your high pressure washer, always disconnect the spark plug wire from the spark plug and place the wire where it cannot contact spark plug.

**DANGER!** Engine exhaust gases contain DEADLY carbon monoxide gas. This dangerous gas, if breathed in sufficient concentrations, can cause unconsciousness or even death. Operate this equipment only in the open air where adequate ventilation is available.

**WARNING!** Gasoline is highly FLAMMABLE and its vapors are EXPLOSIVE. **Do Not** permit smoking, open flames, sparks or heat in the vicinity while handling gasoline. Avoid spilling gasoline on a hot engine. Allow unit to cool for 2 minutes before refueling. Comply with all laws regulating storage and handling of gasoline.

**Read this manual carefully and become familiar with your pressure washer. Know its applications, its limitations, and any hazards involved.**

	<b>WARNING:</b>	
<b>The engine exhaust from this product contains chemicals known to the State of California to cause cancer, birth defects, or other reproductive harm.</b>		

- Locate this pressure washer in areas away from combustible materials, combustible fumes or dust.
- The high pressure equipment is designed to be used with Generac authorized parts only. If you use this equipment with parts that do not comply with minimum specifications, the user assumes all risks and liabilities.
- Some chemicals or detergents may be harmful if inhaled or ingested, causing severe nausea, fainting or poisoning. The harmful elements may cause property damage or severe injury.
- **Do Not** allow CHILDREN to operate the pressure washer at any time.



- Operate engine only at governed speed. Running the engine at excessive speeds increases the hazard of personal injury. **Do Not** tamper with parts which may increase or decrease governed speed.
- **Do Not** wear loose clothing, jewelry or anything that may be caught in the starter or other rotating parts.
- Before starting the pressure washer in cold weather, check all parts of the equipment and be sure ice has not formed there.
- **Never** use a spray gun which does not have a trigger lock in place and in working order.
- Keep the hose connected to the machine and the spray gun while the system is pressurized. Disconnecting the hose while the unit is pressurized is dangerous.
- **Never** operate units with broken or missing parts, or without protective housing or covers.
- Check the fuel system for leaks or signs of deterioration, such as chafed or spongy hose, loose or missing clamps, or damaged tank or cap. Correct all defects before operating the pressure washer.
- Keep water spray away from electric wiring or fatal electric shock may result.
- Use a respirator or mask whenever there is a chance that vapors may be inhaled. Read all instructions with mask so you are certain the mask will provide the necessary protection against inhaling harmful vapors.
- **Never** aim the gun at people, animals or plants. The high pressure stream of water this equipment produces can pierce skin and its underlying tissues, leading to serious injury and possible amputation.
- **Never** allow any part of the body to come in contact with the fluid stream. **Do Not** come in contact with a fluid stream created by a leak in the high pressure hose.
- Always wear eye protection when you use this equipment or when you are in the vicinity where the equipment is in use.
- High pressure spray can cause paint chips or other particles to become airborne.
- **Do Not** operate the pressure washer above the rated pressure.
- **Never** move the machine by pulling on the high pressure hose. Use the handle provided on the unit.
- Always be certain the spray gun, nozzles and accessories are correctly attached.
- **Do Not** secure the spray gun in the (open) position.
- High pressure spray may damage fragile items including glass. **Do Not** point spray gun at glass when in the jet spray mode.
- Hold the spray gun firmly in your hand before you start the unit. Failure to do so could result in an injury from a whipping spray gun. **Do Not** leave the spray gun unattended while the machine is running.
- The cleaning area should have adequate slopes and drainage to reduce the possibility of a fall due to slippery surfaces.
- **Do Not** spray flammable liquids.
- **Do Not** by-pass any safety device on this machine.
- The muffler and engine heat up during operation and remain hot immediately after shutting it down. Avoid contact with a hot muffler or engine as you could be severely burned.
- Operate and store this unit on a stable surface.
- High pressure hose can develop leaks from wear, kinking, abuse, etc. Water spraying from a leak is capable of injecting material into skin. Inspect hose each time before using it. Check all hoses for cuts, leaks, abrasions or bulging of cover, or damage or movement of couplings. If any of these conditions exist, replace hose immediately. **Never** repair high pressure hose. Replace it with another hose that exceeds maximum pressure rating of your unit.
- The muffler and air cleaner must be installed and in good condition before operating the pressure washer. These components act as spark arrestors if the engine backfires.

In the State of California a spark arrester is required by law (Section 4442 of the California Public Resources Code). Other states may have similar laws. Federal laws apply on federal lands.

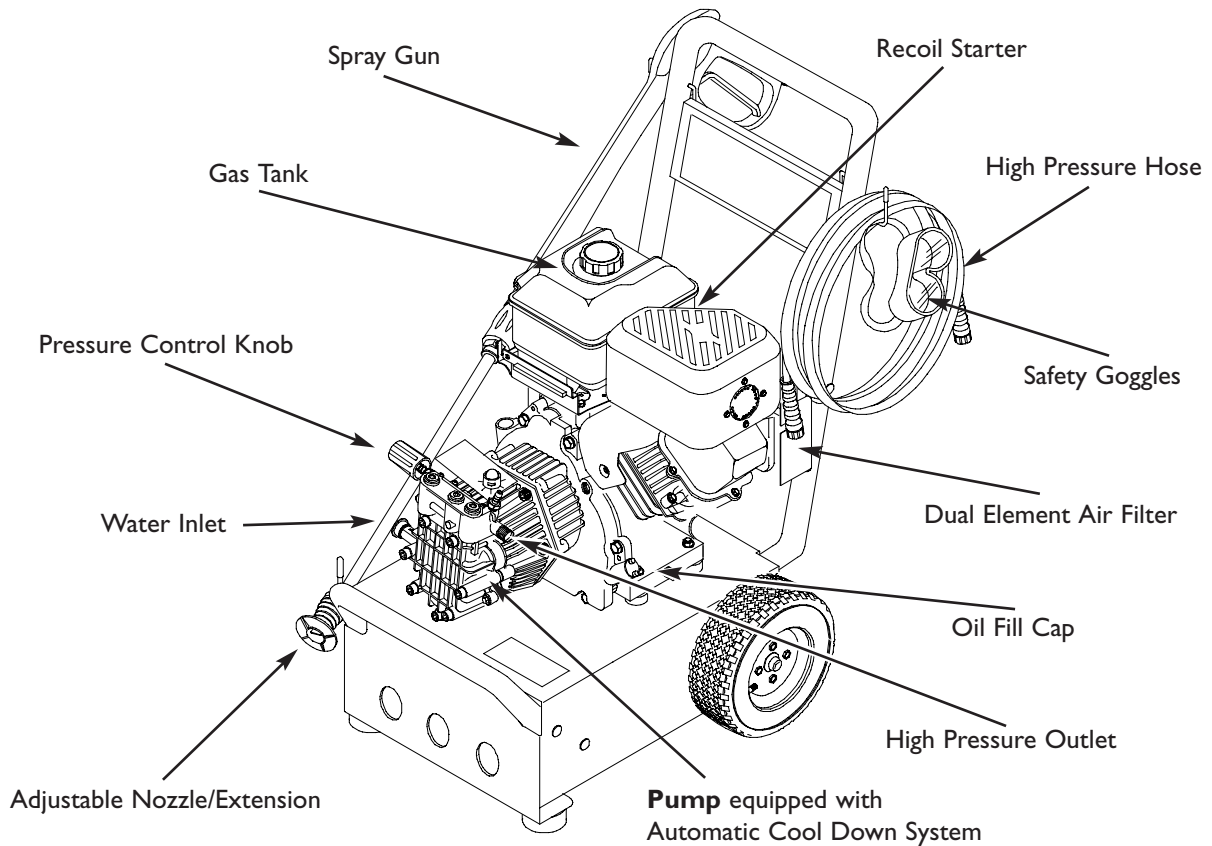
**NOTE:** If you equip the muffler with a spark arrester, it must be maintained in effective working order. You can order a spark arrester through your authorized Briggs and Stratton service dealer.



## KNOW YOUR PRESSURE WASHER

Read this owner's manual and safety rules before operating your high pressure washer.

Compare the illustrations with your high pressure washer to familiarize yourself with the locations of various controls and adjustments. Save this manual for future reference.



**Adjustable Nozzle/Extension** — Always attached to nozzle extension. Pull back for high pressure or push forward for low pressure; turn clockwise for narrow spray or turn counterclockwise for fan spray.

**Automatic Cool Down System** — Cycles water through pump when water reaches 140°-145°F. **Warm water will discharge from pump onto ground. This system prevents internal pump damage.**

**Dual Element Air Filter** — Filter limits the amount of dirt and dust that gets in the engine.

**Gas Tank** — Fill tank with regular unleaded gasoline. Always leave room for fuel expansion.

**High Pressure Hose** — Connect one end to the water pump and the other end to the spray gun.

**High Pressure Outlet** — Connection for high pressure hose.

**Oil Fill Cap** — Fill engine with oil here.

**Pressure Control Knob** — Varies the pressure of the high pressure spray.

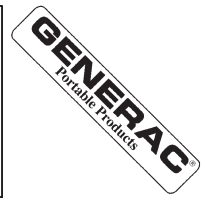
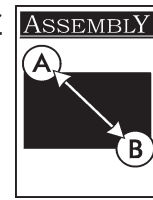
**Pump** — Develops high pressure.

**Recoil Starter** — Use for starting the engine manually.

**Safety Goggles** — Always use the supplied goggles or other eye protection when running your pressure washer.

**Spray Gun** — Controls the application of water onto cleaning surface with trigger device. Includes safety latch.

**Water Inlet** — Connect garden hose here.



**IMPORTANT:** Read entire owner's manual before you attempt to assemble or operate your new pressure washer.

## REMOVE PRESSURE WASHER FROM CARTON

- Remove the parts box included with pressure washer.
- Slice two corners at the end of carton from top to bottom so the panel can be folded down flat, then remove all packing material.
- Roll pressure washer out of carton.

## CARTON CONTENTS

### Items in the carton include:

- Main Unit
- High Pressure Hose
- Parts Box (which includes the following):
  - Carriage Bolts (2)
  - Engine Manual
  - Goggles
  - Handle
  - Knobs (2)
  - Nozzle Cleaning Kit
  - Nozzle Extension
  - Owner's Manual
  - Owner's Registration Card
  - Oil Bottle
  - O-Ring Maintenance Kit
  - Spray Gun
  - Wireform

If any of the above parts are missing or damaged, call the pressure washer helpline at **1-800-270-1408**.

## PREPARING PRESSURE WASHER FOR USE

If you have any problems with the assembly of your pressure washer or if parts are missing or damaged, call the pressure washer helpline at **1-800-270-1408**.

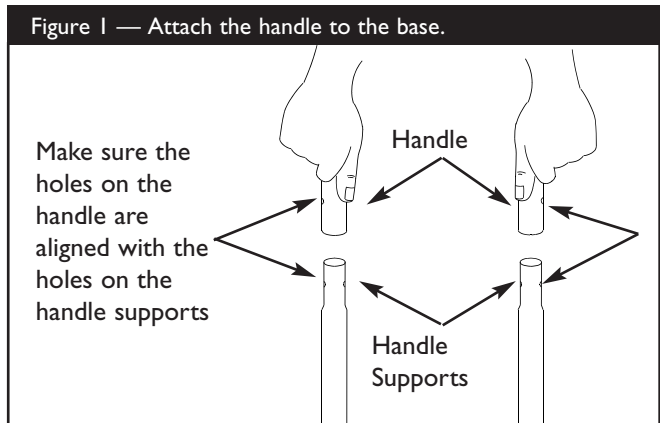
**To prepare your pressure washer for operation, you will need to perform these tasks:**

- Attach the handle and the wire form that holds the high pressure hose and spray gun.
- Connect the high pressure hose to the spray gun and the pump.
- Connect the water supply to the pump.
- Add oil to the engine crankcase.
- Add fuel to the fuel tank.

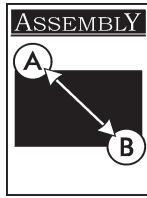
### Attach Handle and Wire Form

**NOTE:** All assembly in this section will be as if assembling from the rear of the pressure washer.

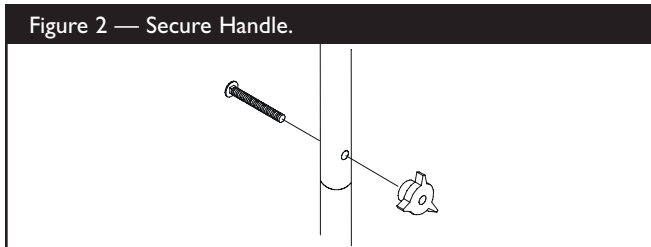
- Place the handle onto the handle supports already connected to the main unit. Make sure the holes in the handle align with the holes on the handle supports. (Figure 1)



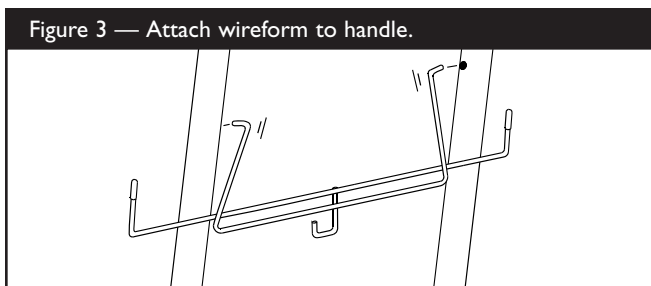
**NOTE:** It may be necessary to move the handle supports from side to side in order to align the handle so it will slide over the handle supports.



- Insert the carriage bolts through the holes on the handle and attach the plastic knobs. Tighten the knobs by hand (Figure 2).



- Insert the wire form into the handle with the longer arm positioned on the left. From behind the unit, the hook should resemble a “J” (Figure 3).



## Add Engine Oil

See engine owner’s manual for proper oil filling.

**NOTE:** The pump is pre-lubricated and sealed, requiring no additional lubrication for the life of the pump.

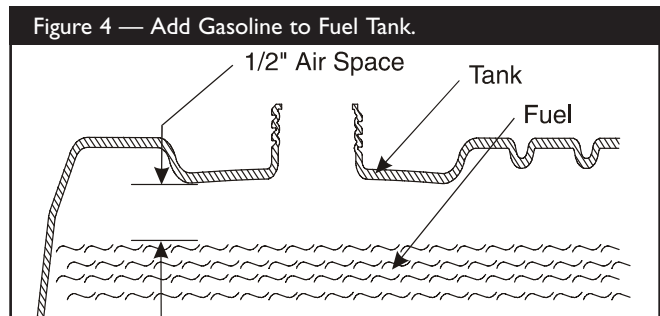
## Add Gasoline

**WARNING!** Never fill fuel tank indoors. Never fill fuel tank when engine is running or hot. Do Not smoke when filling fuel tank.

**WARNING!** Never fill fuel tank completely full. Provide space for fuel expansion. Wipe away any fuel spillage from engine and equipment before starting.

- Use clean regular unleaded fuel and store in approved clean covered containers. Use clean fill funnels. **Never** use “stale” gasoline left over from last season or gasoline stored for long periods.

- Clean the area around the fuel fill cap, remove the cap. Slowly fill tank to about 1/2” below the bottom of the filler neck (Figure 4).



- Install the fuel cap and wipe up any spilled gasoline.

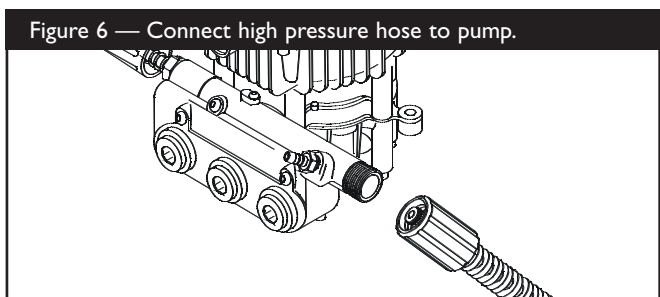
## Connect Hose and Water Supply to Pump

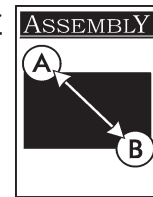
**IMPORTANT:** You must assemble the nozzle extension to the spray gun and attach all hoses before you start the engine. Starting engine without all hoses connected and water supplied will damage the pump.

- Uncoil the high pressure hose and attach one end of the hose to the base of the spray gun (Figure 5).



- Attach the other end of the high pressure hose to the high pressure fitting on the pump (Figure 6).





- Before you connect your garden hose to the water inlet, inspect the inlet screen (Figure 7). Clean the screen if it contains debris, replace it if it is damaged. **DO NOT RUN THE PRESSURE WASHER IF THE SCREEN IS DAMAGED. NEVER SIPHON INLET WATER.**

- Turn ON the water and squeeze the trigger on the gun to purge the pump system of air and impurities.

**CAUTION!** Before starting the pressure washer, be sure you are wearing adequate eye protection.



- Run water through your garden hose for 30 seconds to clean out any debris. Turn off water.
- Connect the garden hose to the water inlet. Tighten by hand (Figure 7).

**CAUTION!** There MUST be at least ten feet of unrestricted garden hose between the pressure washer inlet and any flow shut off device, such as a ‘Y’ shut-off connector or other convenience-type water shut-off valve. Damage to pressure washer resulting from disregarding this warning will not be covered by the warranty.

## CHECKLIST BEFORE STARTING ENGINE

Review the unit’s assembly to confirm you have performed all of the following:

- Make sure the handle and wireform are in place and secure.
- Check for properly tightened hose connections.
- Check to make sure that there are no kinks, cuts, or damage to the high pressure hose.
- Check that oil has been added to the proper level in the engine crankcase.
- Add the proper gasoline to fuel tank.
- Provide a proper water supply (not to exceed 100°F) at an adequate flow.
- Be sure to read the “Safety Rules” (page 2) and “Preparing Pressure Washer For Use” (page 5) before using the pressure washer.



## HOW TO USE YOUR PRESSURE WASHER

If you have any problems operating your pressure washer, please call the pressure washer helpline at **1-800-270-1408**.

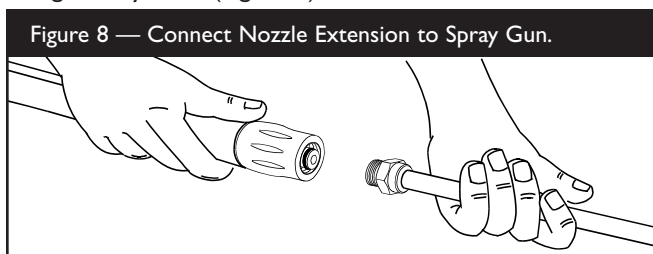
### How to Start Your Engine

The best way to start your engine-powered pressure washer for the first time is to follow these instructions step-by-step. You may also refer to your engine owner's manual. This starting information also applies whenever you start the engine after you have let the pressure washer sit idle for at least a day.

- Place the pressure washer in an area close enough to an outside water source capable of supplying water at a flow rate greater than 3.3 gallons per minute.
- Check that the high pressure hose is tightly connected to the spray gun and to the pump. See "Preparing Pressure Washer for Use" (page 5) for illustrations.
- Make sure unit is in a level position.
- Connect the garden hose to the water inlet on the pressure washer pump. **Turn on the water.**

**CAUTION! Do Not** run the pump without the water supply connected and turned on. You must follow this caution or the pump will be damaged.

- Squeeze the trigger on the gun until you have a steady stream of water. This purges the pump of air and impurities.
- Attach the adjustable nozzle extension to the spray gun. Tighten by hand (Figure 8).



- Position the nozzle in the low pressure mode (see "How to Use the Adjustable Nozzle" and squeeze the trigger on the spray gun to relieve the air pressure caused by turning ON the water. Water will flow out of the gun in a thin stream.

- Continue to hold trigger until there is a steady stream of water and no air remains in the system. This will make it easier to pull start the engine. Release the trigger.
- Engage the safety latch to the spray gun trigger (Figure 9).



- Position the choke to the "**Full**" choke position.
- NOTE:** For a warm engine, be sure the choke lever is in the "**No**" choke position.
- Move throttle lever to "**Fast**" position.
  - Grasp the starter grip handle and pull slowly until you feel some resistance. Then pull rapidly to start the engine.
  - Return the starter grip handle slowly. **Do Not** let rope "snap back" against recoil housing.
  - If the choke was placed in the "**Full**" choke position to start the engine, slowly push it to the "**No**" choke position as soon as the engine warms up enough to run smoothly.
  - If the engine fails to start, review instructions given in the engine owner's manual.

### How to Stop Your Pressure Washer

- Move throttle lever to "**Stop**" position.
- **Squeeze trigger on the spray gun to relieve pressure in the hose.**

**NOTE:** A small amount of water will squirt out when you release the pressure.

### How to Use the Adjustable Nozzle

You now should know how to **START** your pressure washer and how to **STOP** it. The information in this section will tell you how to adjust the spray pattern and apply detergent or other cleaning chemicals.

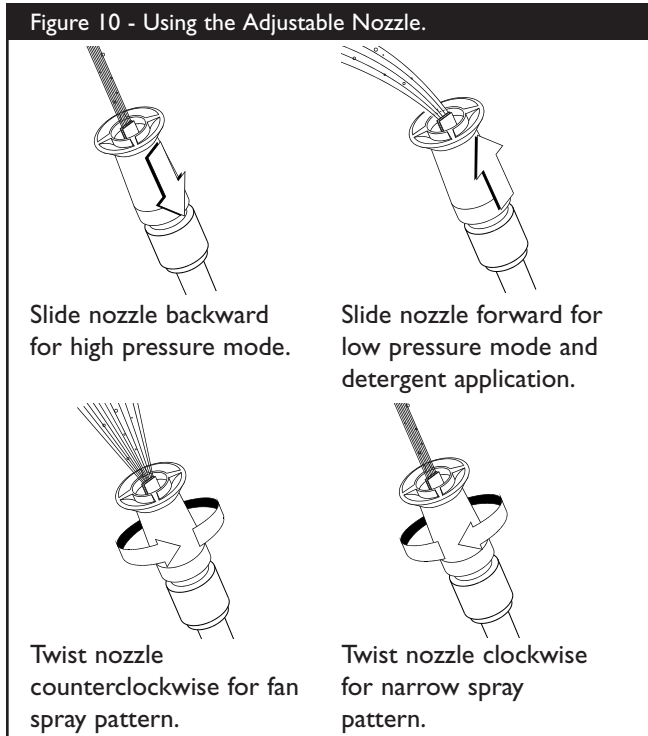
**CAUTION! Never** adjust spray pattern when spraying. **Never** put hands in front of nozzle to adjust spray pattern.



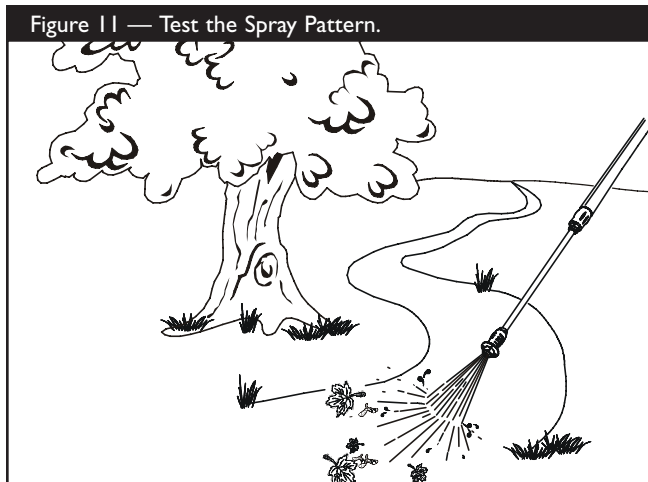


The adjustable nozzle permits you to adjust the spray pressure and the spray pattern, as follows:

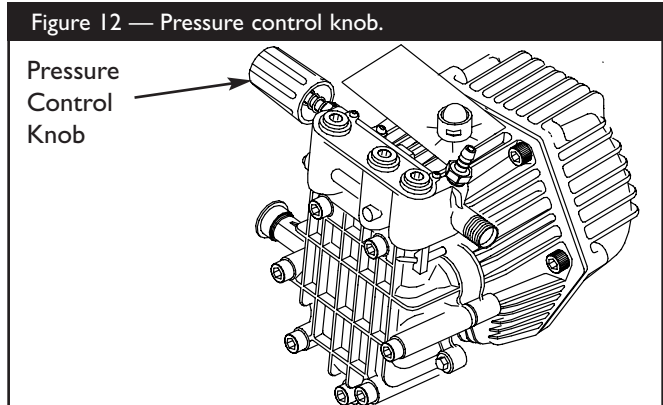
- Slide the nozzle forward to adjust the spray to low pressure mode (Figure 10). Slide the nozzle backward to achieve high pressure.



- Twisting the nozzle adjusts the spray pattern from a narrow pattern to a fan pattern (Figure 10).
- Point the nozzle toward the ground and press the trigger to test the pattern (Figure 11).



- Increase or decrease the pressure of the spray by turning the pressure control knob counterclockwise or clockwise respectively (Figure 12).



- For most effective cleaning, keep the spray nozzle between 8 to 24 inches away from cleaning surface.
- If you get the spray nozzle too close, especially using high pressure mode, you may damage the surface being cleaned.
- **Do Not** get closer than 8 inches when cleaning tires.

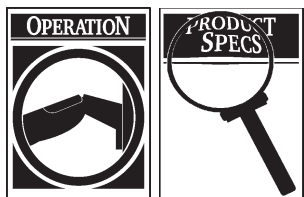
### Applying Detergent with the Adjustable Nozzle

**IMPORTANT:** Use soaps designed specifically for pressure washers. Household detergents could damage the pump.

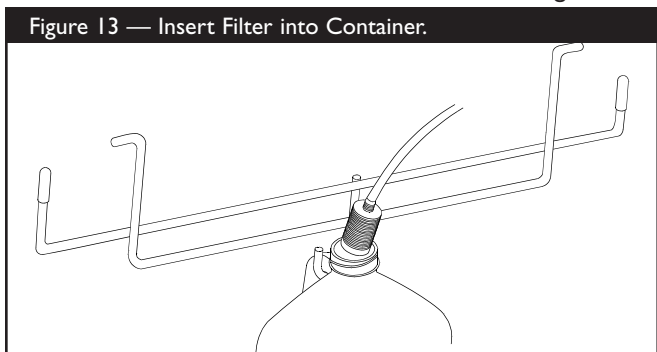
**IMPORTANT:** You must **attach all hoses** before you start the engine. Starting the engine without all the hoses connected and without the water turned ON will damage the pump.

**To apply detergent, follow these steps:**

- Review the use of adjustable nozzles.
- Prepare the detergent solution as required by the job.



- Hang the detergent solution on the hook of the wireform attached to the handle, as shown in Figure 13.



- Place the small filter end of the detergent siphoning tube into the detergent container.

**CAUTION!** Keep the detergent siphoning tube from coming in contact with the hot muffler. This will damage the plastic tube. When inserting the filter into a cleaning solution bottle, route the tube so as to keep it from inadvertently contacting the hot muffler.

- Slide the adjustable nozzle forward to low pressure mode. Detergent cannot be applied with the nozzle in high pressure position.
- Make sure the garden hose is connected to the water inlet. Check that the high pressure hose is connected to the spray gun and the pump (see “How To Use Your Pressure Washer”, page 8). Start the engine.
- Apply detergent to a dry surface, starting from the bottom and working up.
- Allow the detergent to “soak in” for 3-5 minutes before washing and rinsing. Reapply as needed to prevent surface from drying.
- For washing, start at lower portion of area to be washed and work upward, using long, even, overlapping strokes.

### Pressure Washer Rinsing

**WARNING!** Be extremely careful if you must use the pressure washer from a ladder, scaffolding or any other relatively unstable location. Pressure in a running washer builds as you climb. When you press the trigger, the recoil from the initial spray could cause you to fall. The high pressure spray could also cause you to fall if you are too close to the cleaning surface.

### For Rinsing:

- Slide the nozzle backward to high pressure, press the trigger and wait for the detergent to clear.

**NOTE:** You can also stop detergent from flowing by simply removing detergent siphoning tube from bottle.

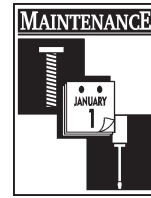
- Keep the spray gun a safe distance from the area you plan to spray.
- Apply a high pressure spray to a small area, then check the surface for damage. If no damage is found, it is okay to continue cleaning.
- Start at the top of the area to be rinsed, working down with same overlapping strokes as you used for washing and applying detergent.

### Automatic Cool Down System (Thermal Relief)

If you run the engine on your pressure washer for 3-5 minutes without pressing the trigger on the spray gun, circulating water in the pump can reach a temperature between 140–145°F. When the water reaches this temperature, the automatic cool down system engages and cools the pump by **discharging the warm water onto the ground**. This system prevents internal damage to the pump.

## SPECIFICATIONS

- Outlet Pressure** . . . . . 2,600 psi
- Flow Rate** . . . . . 3.0 gallons per minute (gpm)
- Detergent** . . . . . Use detergent approved for pressure washers
- Water Supply** . . . . . Not to Exceed 100°F
- Temperature**
- Automatic Cool Down System** . . . . . Will cycle when water reaches 140°-145°F



## GENERAL MAINTENANCE RECOMMENDATIONS

The pressure washer warranty does not cover items that have been subjected to operator abuse or negligence. To receive full value from the warranty, the operator must maintain the high pressure washer as instructed in this manual.

- Some adjustments will need to be made periodically to properly maintain your high pressure washer.
- All maintenance in this manual and the engine owner's manual should be made at least once each season.
- Once a year you should clean or replace the spark plug, clean or replace the air filter and check the gun and adjustable nozzle extension assembly for wear. A new spark plug and clean air filter assure proper fuel-air mixture and help your engine run better and last longer. Please refer to your engine owner's manual for more details.

### BEFORE EACH USE

- Check engine oil level.
- Check water inlet screen for damage.
- Check in-line filter for damage.
- Check high pressure hose for leaks.
- Check detergent siphoning tube and filter for damage.
- Check gun and adjustable nozzle extension assembly for leaks.
- Rinse out garden hose to flush out debris.

## PRESSURE WASHER MAINTENANCE

### Check and Clean Inlet Screen

Examine the screen on the water inlet. Clean it if the screen is clogged or replace it if screen is damaged.

### Check High Pressure Hose

The high pressure hose can develop leaks from wear, kinking, or abuse. Inspect the hose each time before using it. Check for cuts, leaks, abrasions or bulging of cover, damage or movement of couplings. If any of these conditions exist, replace the hose immediately.

**WARNING!** Water spraying from a leak is capable of injecting material into skin. Inspect hose each time before using it. **Never** repair a high pressure hose. Replace it with another hose that exceeds the maximum pressure rating of your pressure washer.

### Check Detergent Siphoning Tube

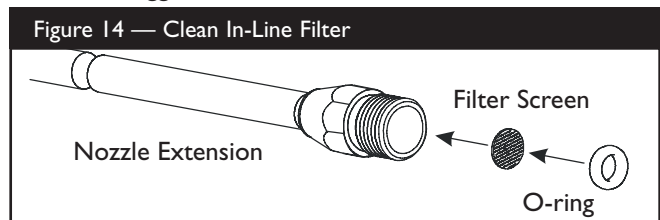
Examine the filter on the detergent tube and clean if clogged. The tube should fit tightly on the barbed fitting. Examine the tube for leaks or tears. Replace the filter or tube if either is damaged.

### Check Gun and Adjustable Nozzle Extension

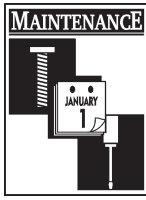
Examine the hose connection to the gun and make sure it is secure. Test the trigger by pressing it and making sure it "springs back" into place when you release it. Put the safety latch in the **ON** position and test the trigger. You should not be able to press the trigger.

### Check In-Line Filter

Refer to Figure 14 and service the in-line filter if it becomes clogged, as follows:



1. Detach gun and nozzle extension from high pressure hose. Detach nozzle extension from gun and remove o-ring and screen from nozzle extension. Flush the screen, gun, and adjustable nozzle extension with clean water to clear debris.



2. If the screen is damaged, the o-ring kit contains a replacement in-line filter screen and an o-ring. If undamaged, reuse screen.
3. Place the in-line filter screen into the threaded end of the nozzle extension. Direction does not matter. Push the screen in with the eraser end of a pencil until it rests flat at the bottom of the opening. Take care to not bend the screen.
4. Place the o-ring into the recess. Push the o-ring snugly against the in-line filter screen.
5. Assemble the nozzle extension to the spray gun, as described earlier in this manual.

## Purge Pump of Air and Contaminants

### To remove air from the pump, follow these steps:

- Set up the pressure washer as described in “Preparing Pressure Washer For Use” (page 5). Connect the water supply and turn water on.
- Pull the trigger on the gun and hold.
- When the water supply is steady and constant, engage the safety latch and refasten the nozzle attachment.

### To remove contaminants from the pump, follow these steps:

- Set up the pressure washer as described in “Preparing Pressure Washer For Use” (page 5). Connect the water supply and turn water on.
- Remove the nozzle extension from the gun.
- Start the engine according to instructions in “How To Use Your Pressure Washer” (page 8).
- Squeeze the trigger on the gun and hold.
- When the water supply is steady and constant, engage the safety latch and refasten the nozzle attachment.

## Cleaning Detergent Siphoning Tube

If you used the detergent siphoning tube, you must flush it with clean water before stopping the engine.

- Place the detergent siphoning tube in a bucket full of clean water.

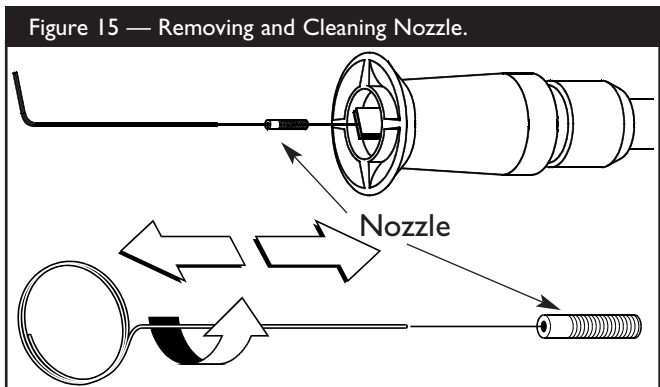
- Slide the adjustable nozzle forward to the low pressure position. Flush for 1-2 minutes.
- Shut off the engine.

**IMPORTANT:** Simply shutting OFF engine will not release pressure in the system. **When the engine has shut down, squeeze the trigger on the gun to relieve the pressure in the hose.**

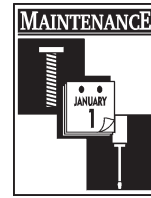
## Nozzle Maintenance

A pulsing sensation felt while squeezing the spray gun trigger may be caused by excessive pump pressure. The principal cause of excessive pump pressure is a nozzle clogged or restricted with foreign materials, such as dirt, etc. To correct the problem, immediately clean the nozzle using the tools included with your pressure washer and follow these instructions:

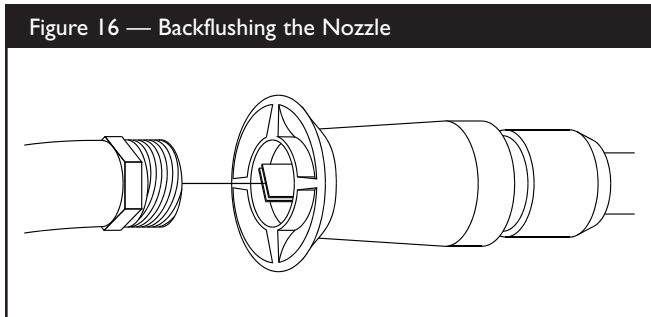
1. Shut off the engine and turn off the water supply.
2. Detach the nozzle extension from the spray gun. Twist the nozzle clockwise to the stream position. Using the supplied 2mm (5/64) allen wrench, remove the nozzle from the end of the nozzle extension (Figure 15).



3. Remove the in-line filter from the other end of the nozzle extension.
4. Use the wire included in the kit (or a small paper clip) to free any foreign material clogging or restricting the nozzle (Figure 15).



5. Using a garden hose, remove additional debris by back flushing water through the nozzle extension (Figure 16). Back flush between 30 to 60 seconds. Turn the adjustable nozzle extension to stream spray and move the nozzle from low to high while flushing.



6. Reinstall the nozzle and in-line filter into the nozzle extension. Do Not overtighten the nozzle with the allen wrench.
7. Reconnect the nozzle extension to the spray gun.
8. Reconnect the water supply, turn on the water, and start the engine.
9. Test the pressure washer by operating with nozzle in the high and in the low positions.

## O-Ring Maintenance

Through the normal operation of your pressure washer, o-rings, which keep the connections of the hoses and gun tight and leak-free, may become worn or damaged.

Provided with your pressure washer is an O-Ring Maintenance Kit which includes replacement o-rings, rubber washer and water inlet filter.

### To remove a worn or damaged o-ring:

- Use a small flathead screwdriver to get underneath the o-ring and pry it off.

## ENGINE MAINTENANCE

See the engine owner's manual for instructions on how to properly maintain the engine.

- CAUTION!** Avoid prolonged or repeated skin contact with used motor oil. Used motor oil has been shown to cause skin cancer in certain laboratory animals. Thoroughly wash exposed areas with soap and water.
- KEEP OUT OF REACH OF CHILDREN. DON'T POLLUTE. CONSERVE RESOURCES. RETURN USED OIL TO COLLECTION CENTERS.

## PREPARING THE UNIT FOR STORAGE

Water should not remain in the unit for long periods of time. Sediments or minerals can deposit on pump parts and "freeze" pump action. If you do not plan to use the pressure washer for more than 30 days, follow this procedure:

1. Flush detergent siphoning tube by placing the filter into a pail of clean water while running pressure washer in low pressure mode (adjustable nozzle in the forward position). Flush for one to two minutes.
2. Shut off the engine and let it cool, then remove all hoses. Disconnect spark plug wire from spark plug.
3. Empty the pump of all pumped liquids by pulling the recoil handle about 6 times. This should remove most of the liquid in the pump.

**NOTE:** To protect the unit from freezing temperatures, draw RV antifreeze (non-alcohol) into the pump by pouring the solution into a 3-foot section of garden hose connected to inlet adapter and pulling recoil handle twice.

4. Store unit in a clean, dry area.

## STORING THE ENGINE

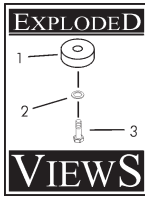
See the engine owner's manual for instructions on how to properly prepare the engine for storage.



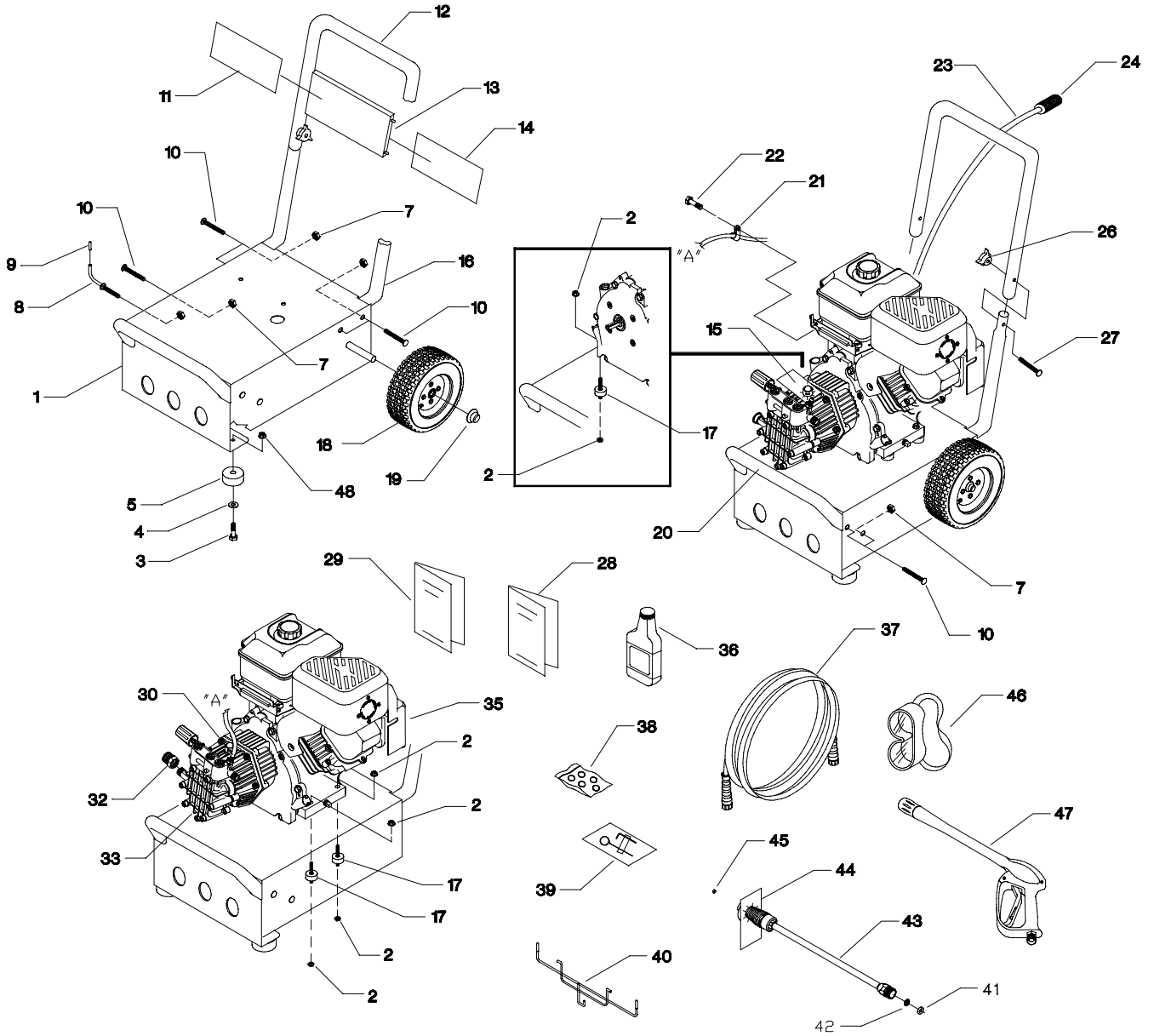


## TROUBLESHOOTING

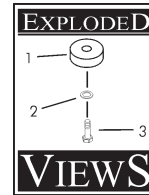
Problem	Cause	Correction
<b>Pump has following problems: failure to produce pressure, erratic pressure, chattering, loss of pressure, low water volume.</b>	<ol style="list-style-type: none"> <li>1. Nozzle in low pressure mode.</li> <li>2. Water inlet is blocked.</li> <li>3. Inadequate water supply.</li> <li>4. Inlet hose is kinked or leaking.</li> <li>5. Clogged inlet hose strainer.</li> <li>6. Water supply is over 100°F.</li> <li>7. High pressure hose is blocked or leaks.</li> <li>8. Gun leaks.</li> <li>9. Nozzle is obstructed.</li> <li>10. Pump is faulty.</li> </ol>	<ol style="list-style-type: none"> <li>1. Pull nozzle backward for high pressure mode.</li> <li>2. Clear inlet.</li> <li>3. Provide adequate water flow.</li> <li>4. Straighten inlet hose, patch leak.</li> <li>5. Check and clean inlet hose strainer.</li> <li>6. Provide cooler water supply.</li> <li>7. Clear blocks in outlet hose.</li> <li>8. Replace gun.</li> <li>9. Clean nozzle.</li> <li>10. Contact Generac service facility.</li> </ol>
<b>Detergent fails to mix with spray.</b>	<ol style="list-style-type: none"> <li>1. Detergent siphoning tube is not submerged.</li> <li>2. Chemical filter is clogged.</li> <li>3. Dirty In-Line filter.</li> <li>4. Nozzle is in high pressure mode.</li> </ol>	<ol style="list-style-type: none"> <li>1. Insert detergent siphoning tube into detergent.</li> <li>2. Clean or replace filter/detergent siphoning tube.</li> <li>3. See "Check In-Line Filter" on page 11.</li> <li>4. Push nozzle forward for low pressure mode.</li> </ol>
<b>Engine runs good at no-load but "bogs" when load is added.</b>	Engine speed is too slow.	Move throttle control to FAST position. If engine still "bogs down", contact Briggs and Stratton service facility.
<b>Engine will not start; or starts and runs rough.</b>	<ol style="list-style-type: none"> <li>1. Low oil level.</li> <li>2. Dirty air cleaner.</li> <li>3. Out of gasoline.</li> <li>4. Stale gasoline.</li> <li>5. Spark plug wire not connected to spark plug.</li> <li>6. Bad spark plug.</li> <li>7. Water in gasoline.</li> <li>8. Overchoking.</li> <li>9. Excessively rich fuel mixture.</li> <li>10. Intake valve stuck open or closed.</li> <li>11. Engine has lost compression.</li> </ol>	<ol style="list-style-type: none"> <li>1. Fill crankcase to proper level.</li> <li>2. Clean or replace air cleaner.</li> <li>3. Fill fuel tank.</li> <li>4. Drain gas tank; fill with fresh fuel.</li> <li>5. Connect wire to spark plug.</li> <li>6. Replace spark plug.</li> <li>7. Drain gas tank; fill with fresh fuel.</li> <li>8. Open choke fully and crank engine.</li> <li>9. Contact Briggs and Stratton service facility.</li> <li>10. Contact Briggs and Stratton service facility.</li> <li>11. Contact Briggs and Stratton service facility.</li> </ol>
<b>Engine shuts down during operation.</b>	<ol style="list-style-type: none"> <li>1. Out of gasoline.</li> <li>2. Low oil level.</li> </ol>	<ol style="list-style-type: none"> <li>1. Fill fuel tank.</li> <li>2. Fill crankcase to proper level.</li> </ol>
<b>Engine lacks power.</b>	Dirty air filter.	Replace air filter.
<b>Engine "hunts" or falters.</b>	Choke is opened too soon.	Move choke to halfway position until engine runs smoothly.



# EXPLODED VIEW — UNIT



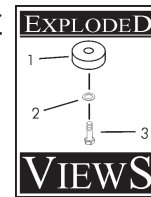




## PARTS LIST — UNIT

Item	Part #	Qty.	Description
1	AB5721	1	BASE, PWDR Coat Red
2	67989	8	NUT, M8 Flange Serrated
3	42909	2	HHCS, M8 1.25 x 30
4	50190	2	WASHER, M8 .34" x 1"
5	27007	2	MOUNT, Donut Type Vibration
7	99583	8	NUT, Flange Lock 5/16"-18
8	B2150	1	HOOK, Gun Holder
9	B2516	1	CAP, Vinyl (black)
10	B2043	7	BOLT, 5/16"-18 x 1-3/4" Carriage
11	B5810	1	DECAL, Logo
12	B1983	1	HANDLE
13	B1631A	1	BILLBOARD, Plastic
14	B1932	1	DECAL, Instructions
15	B1288	1	TAG, Breather Cap
16	B1981	2	SUPPORT, Handle
17	21217	4	MOUNT, Rubber Shock
18	B4966	2	WHEEL, 3 x 10 Steel Hub
19	75402C	2	PUSHNUT, 5/8" Dia.
20	B1982	1	BUMPER
21	B1232	1	CLAMP, Hose 7/16" Dia.
22	32713	1	SCREW, Taptite #10-32 x 5/8"
23	A1040D	1	HOSE, 4-1/2' Chemical Clear
24	A1041	1	FILTER, Chemical Hose
26	97178	2	KNOB, Handle 1/4" - 20 PW
27	31669	2	BOLT, 1/4" - 20 x 1-3/4" Carriage
28	B3297	1	MANUAL, Engine
29	B5814	1	MANUAL
30	48031G	1	CLAMP, Hose 3/8"
32	21424	1	CONNECTOR, Garden Hose
33	NSP	1	ASSEMBLY, Pump (see pages 18-19)
35	NSP	1	ENGINE
36	BB3061B	1	OIL, 20oz Bottle
37	B3635	1	HOSE, High Pressure 25'
38	B5830	1	KIT, O- Ring
39	188287	1	KIT, Nozzle Cleaning
40	B2168A	1	ASSEMBLY, Wireform
41	97837	1	O-RING, High Pressure Trans.
42	B4224	1	SCREEN, Gun Inlet
43	B3264C	1	WAND, Hi/Lo
44	97566	1	TAG, Nozzle Instructions
45	92661	1	NOZZLE, 1.20 Blue Replacement
46	87815	1	GOGGLES, Safety
47	B3263	1	GUN, High Pressure
48	52858	2	NUT, Locking M8 - 1.25





## PARTS LIST — PUMP

Item	Part #	Qty	Description	Item	Part #	Qty	Description
1	B3287	1	O-RING, Engine Adapter	42	.....	1	SPRING, Unloader
2	B2260	1	ADAPTER, Housing, Cam	43	.....	1	ASSEMBLY, Spindle
3	B2217	4	O-RING, Engine Adapter Bolt	45	.....	1	O-RING, Spindle
4	B2261B	4	SCREW, Button Hd 5/16 - 24 x 3/4"	46	.....	1	SEAT, Ball Unloader
5	96400	3	SPRING, Piston Return	47	.....	1	BALL, Stainless Steel 9/32 Dia.
6	99735	1	ASSEMBLY, Oil Breather	48	.....	1	SEAT, Trapped Line Pressure
7	93790	1	O-RING, Crankcase	49	.....	1	O-RING, Trapped Line Pressure
8	40945	6	SHCS, M6 x 1.0 x 20mm	50	.....	1	VALVE, Shuttle Piston
9	93652	1	SPRING, Thermal By-Pass	51	.....	1	SPRING, Piston Trapped Pressure
10	95416	1	PISTON, Thermal By-Pass	52	.....	1	VENTURI, Chemical
11	93876	1	O-RING, Thermal By-Pass	53	.....	1	O-RING, Venturi
12	A2069	1	GASKET, Head	56	.....	1	ASSEMBLY, Head, Brass
13	93644	1	ACTUATOR, Thermal By-Pass	60	.....	3	SPACER, High Pressure Seal
14	96053	3	SEAL, High Pressure	35	<b>185933</b>	<b>0</b>	<b>KIT, Check Valve</b>
15	96015	3	RING, Bearing	16	.....	6	WASHER, Steel Special
16	B2665	6	WASHER, Steel Special	17	.....	6	BOLT, Head M8 x 1.25 x 70mm
17	A2013	6	BOLT, Head M8 x 1.25 x 70mm	36	.....	6	O-RING, Check Valve
18	97840	3	O-RING, Cap	37	.....	6	ASSEMBLY, Check Valve
19	97841	3	CAP, Outlet Port	38	<b>B3479</b>	<b>0</b>	<b>KIT, Unloader Spindle</b>
20	A1320	1	SPACER PLATE, Inlet	39	.....	1	CAP, Plastic
21	93680	3	SEAL, Oil Piston	40	.....	1	SET SCREW, M6 x 8
22	94944	3	SHOE, Piston Pivot	41	.....	1	HANDLE, Unloader
23	99427	3	ASSEMBLY, Ceramic Piston & Cap	42	.....	1	SPRING, Unloader
24	<b>185751</b>	<b>0</b>	<b>KIT, Crankcase</b>	43	.....	1	ASSEMBLY, Spindle
1	.....	1	O-RING, Engine Adapter	44	<b>B3510</b>	<b>0</b>	<b>KIT, High Pressure Outlet</b>
2	.....	1	ADAPTER, Housing, Cam	45	.....	1	O-RING, Spindle
3	.....	4	O-RING, Engine Adapter Bolt	46	.....	1	SEAT, Ball Unloader
4	.....	4	SCREW, Button Hd 5/16 - 24 x 3/4"	47	.....	1	BALL, Stainless Steel 9/32 Dia.
5	.....	3	SPRING, Piston Return	48	.....	1	SEAT, Trapped Line Pressure
6	.....	1	ASSEMBLY, Oil Breather	49	.....	1	O-RING, Trapped Line Pressure
7	.....	1	O-RING, Crankcase	50	.....	1	VALVE, Shuttle Piston
8	.....	6	SHCS, M6 x 1.0 x 20mm	51	.....	1	SPRING, Piston Trapped Pressure
12	.....	1	GASKET, Head	52	.....	1	VENTURI, Chemical
16	.....	6	WASHER, Steel Special	53	.....	1	O-RING, Venturi
17	.....	6	BOLT, Head M8 x 1.25 x 70mm	54	<b>185943</b>	<b>0</b>	<b>KIT, Chemical Injector</b>
21	.....	3	SEAL, Oil Piston	55	.....	1	BARB HOSE, Brass with Nylon Insert
22	.....	3	SHOE, Piston Pivot	57	.....	1	BALL, 5.5 dia. Chemical Injector
23	.....	3	ASSEMBLY, Ceramic Piston & Cap	58	.....	1	SPRING, Chemical Injector
25	.....	2	BEARING SET, Thrust 15.5	59	<b>185889</b>	<b>0</b>	<b>KIT, O-Ring Seals</b>
30	.....	3	SPACER, Pilot	1	.....	1	O-RING, Engine Adapter
31	.....	1	ASSEMBLY, Cam	3	.....	4	O-RING, Engine Adapter Bolt
26	.....	1	CAM, Axial 6.0 Lift	7	.....	1	O-RING, Crankcase
27	.....	1	WASHER, Thrust	8	.....	6	SHCS, M6 x 1.0 x 20mm
28	.....	1	RETAINER, Push - On	9	.....	1	SPRING, Thermal By-Pass
29	.....	1	C-RING, Cam Retainer	10	.....	1	PISTON, Thermal By-Pass
33	.....	1	ADAPTER, Shaft Hex	11	.....	1	O-RING, Thermal By-Pass
32	.....	1	HOUSING, Piston	12	.....	1	GASKET, Head
34	<b>185752</b>	<b>0</b>	<b>KIT, Complete Head</b>	14	.....	3	SEAL, High Pressure
12	.....	1	GASKET, Head	16	.....	6	WASHER, Steel Special
13	.....	1	ACTUATOR, Thermal By-Pass	17	.....	6	BOLT, Head M8 x 1.25 x 70mm
14	.....	3	SEAL, High Pressure	18	.....	3	O-RING, Cap
15	.....	3	RING, Bearing	21	.....	3	SEAL, Oil Piston
16	.....	6	WASHER, Steel Special	36	.....	6	O-RING, Check Valve
17	.....	6	BOLT, Head M8 x 1.25 x 70mm	37	.....	6	ASSEMBLY, Check Valve
18	.....	3	O-RING, Cap	45	.....	1	O-RING, Spindle
19	.....	3	CAP, Outlet Port	49	.....	1	O-RING, Trapped Line Pressure
36	.....	6	O-RING, Check Valve	53	.....	1	O-RING, Venturi
37	.....	6	ASSEMBLY, Check Valve	60	.....	3	SPACER, High Pressure Seal
39	.....	1	CAP, Plastic	61	.....	3	SEAL, U-Cup
40	.....	1	SET SCREW, M6 x 8				
41	.....	1	HANDLE, Unloader				

Item numbers 24, 34, 35, 38, 44, 54, and 59 are service kits and include all parts shown within the box. Certain parts may only be available as components of a kit.

# LIMITED PRESSURE WASHER WARRANTY

GENERAC PORTABLE PRODUCTS (hereafter referred to as the COMPANY) warrants to the original retail purchaser, the pressure washer manufactured by the COMPANY to be free from defects in material and workmanship for the period(s) set forth below from the date of original purchase. This warranty is not transferable. The term "original purchaser" means the person for whom the pressure washer is originally purchased.

## Warranty Schedules

Electric Power Washer	1 year (does not apply to commercial or rental applications)		
		CONSUMER*	COMMERCIAL*
All Other Engine-driven	<b>Engine:</b>	Warranted solely by Engine Manufacturer	Warranted solely by Engine Manufacturer
	<b>Pump:</b>	1 year	90 days

**\* NOTE: For the purpose of this warranty "consumer" use means personal residential household use by original purchaser. "Commercial" use means all other uses, including rental, construction, commercial and income producing purposes. Once a pressure washer has experienced commercial use, it shall thereafter be considered a commercial use pressure washer for the purposes of this warranty.**

During said warranty period, the COMPANY will, at its option, repair or replace any part which, upon examination by the COMPANY or COMPANY-Authorized Dealers, is found to be defective under normal use and service\*\*. All transportation costs under warranty, including return to the factory if necessary, are to be borne by the purchaser and prepaid by the purchaser.

**\*\* NORMAL WEAR: As with all mechanical devices, pressure washers need periodic parts service and replacement to perform well. This warranty does not cover repair when normal use has exhausted the life of a part or pressure washer pump.**

**This warranty does not include:** Used products and demonstration equipment. Parts, such as GUNS, HOSES, WANDS, NOZZLES or other wear items such as quick couplers, oil, gauges, belts, o-rings, filters, pump packing, etc. Pumps which have been run without water supplied. Damage or malfunctions resulting from: accidents, abuse, modifications, alterations, or improper servicing. Freezing or chemical deterioration. Normal maintenance such as adjustments, fuel system cleaning and obstruction (due to chemical, dirt, carbon or lime, etc.).

THIS WARRANTY IS IN PLACE OF ALL OTHER WARRANTIES, EXPRESS OR IMPLIED, SPECIFICALLY, THE COMPANY MAKES NO OTHER WARRANTIES AS TO MERCHANTABILITY OR FITNESS FOR A PARTICULAR PURPOSE. THE DURATION OF ANY IMPLIED WARRANTIES WHICH CANNOT BE DISCLAIMED IS LIMITED TO THE TIME PERIOD AS SPECIFIED IN THE EXPRESS WARRANTY. LIABILITY FOR CONSEQUENTIAL, INCIDENTAL, OR SPECIAL DAMAGES UNDER ANY AND ALL WARRANTIES IS EXCLUDED, EVEN IF SUCH DAMAGES ARE A DIRECT RESULT OF THE COMPANY'S NEGLIGENCE. THE COMPANY ALSO DISCLAIMS ANY RESPONSIBILITY FOR INCIDENTAL OR CONSEQUENTIAL DAMAGES SUCH AS THE LOSS OF TIME OR THE USE OF THE POWER EQUIPMENT, OR ANY COMMERCIAL LOSS DUE TO THE FAILURE OF THE EQUIPMENT: AND ANY IMPLIED WARRANTIES ARE LIMITED TO THE DURATION OF THIS WRITTEN WARRANTY.

Some states do not allow limitations on how long an implied warranty lasts, or the exclusion or limitation of incidental or consequential damages, so the above limitations or exclusions may not apply to you. This warranty gives you specific legal rights and you may also have other rights, which vary from state to state.

For service, see your nearest COMPANY-Authorized warranty service facility or call 1-877-544-0982. Warranty service can be performed only by a COMPANY-Authorized service facility. This warranty will not apply to service at any other facility. At the time of requesting warranty service, evidence of original purchase date must be presented.

**Generac Portable Products**

Jefferson, Wisconsin U.S. A.