

APW5102



Owner's Manual

3000PSI PRESSURE WASHER



SAFETY GUIDELINES

Thank you for purchasing a Pressure Washer. Whether you are doing light cleaning at home or are needing power to do the tough jobs, pressure washers are built to give you the power you need. Your pressure washer will serve you in the future, following proper break-in procedures, by using recommended set-up and operating procedures, and performing preventive maintenance as specified in this and the accompanying engine manual.


Most important is the safety of you and those around you. Remember that while the pressure washer gives you the power you need to complete your job, safety rules should always be followed.

Thank you for selecting our product.

Safety Symbols

The following symbols are used throughout this manual. Follow listed instructions to ensure your safety.

⚠ DANGER



Indicates an imminently hazardous situation which, if not avoided, will result in death or serious injury.

⚠ WARNING



Indicates an imminently hazardous situation which, if not avoided, will result in death or serious injury.

⚠ CAUTION



Indicates a potentially hazardous situation exists, which if not avoided, may result in minor or moderate injury or product damage.

Note: Indicates operation or maintenance information helpful to improve performance or operation.

The following Safety Precautions apply whenever using storing or servicing Pressure Washers or their engines to reduce the possibility of personal injury.

Overlooking or ignoring these precautions can lead to personal injury or product damage.

⚠ WARNING

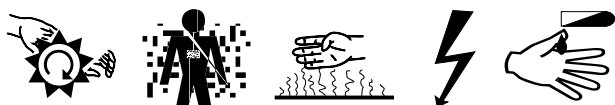


- Read this manual carefully. Know your equipment. Consider applications, potential hazards and limitations for your unit.
- This equipment is designed for specific applications. Do not modify or use for any application other than which it is designed.
- Store the pressure washer in a well ventilated area with the fuel tank empty. Fuel should not be stored near the pressure washer.
- Never operate under these conditions:
 - a. A noticeable change in engine speed.
 - b. A noticeable loss of pressure.
 - c. The engine misfires.
 - d. Smoke or flames are present.
 - e. Enclosed compartment.
 - f. Excessive vibration.
 - g. Rain or inclement weather.
- Water spray must never be directed towards any electric wiring or directly towards the pressure washer.
- Do not allow the hose to come in contact with the hot muffler.
- Equipment must be placed on a firm, supporting surface.
- Remove the spark plug or cable from the spark plug to prevent accidental starting, when not in use, or prior to detaching the high pressure hose.
- Keep the pressure washer clean and free of oil, mud and other foreign matter.
- Do not wear loose clothing, jewelry, or anything that may be caught in the engine.
- Never direct spray at people or animals.
- Never allow children to operate pressure washer at any time.
- Use both hands to control the wand.

GENERAL PRECAUTIONS



WARNING



- Do not touch the nozzle or water spray while operating.
- Wear safety goggles while operating.
- Only approved hoses and nozzles should be used.
- Do not kink the high pressure hose.
- All hose connections must be properly sealed.
- Prior to starting the pressure washer in cold weather, be sure ice has not formed in any part of the equipment.
- Use only recommended chemicals.
- Outdoor use only.
- Place the pressure washer away from cleaning site during operation.
- To prevent accidental discharge, the spray gun should be secured by locking trigger when not in use.
- Do not run the pressure washer for more than five minutes without depressing the trigger or damage to the pump may result.
- Check the fuel system periodically for leaks or signs of deterioration such as chafed or spongy hose, loose or missing clamps, or damaged tank or cap. All defects should be corrected before operation.
- Do not touch hot muffler.
- Service, operate and refuel under the following conditions:
 - a. Good ventilation.
 - b. Refuel the pressure washer in a well lighted area.
 - c. Avoid fuel spills and never refuel while the pressure washer is operating.
 - d. Avoid an ignition source when refueling.
 - e. Use lead free fuel with a minimum of 85 octane.
- Do not smoke near the pressure washer.
- Do not use damaged high pressure hoses.

SAFETY FEATURES

THERMAL RELIEF VALVE

A thermal relief valve is provided to protect the pump from overheating if the spray gun is closed for an extended length of time or the nozzle becomes plugged. However, it is intended to be used as a backup system and every effort should be made to not permit the pump to heat up.

We recommend turning the pressure washer off if it will not be used for more than five minutes. This saves wear on the unit, reduces fuel consumption and extends the life of the pump by avoiding heat.

SAFETY LOCK OFF LATCH

To prevent accidental discharge of high pressure water, the safety latch on the trigger should be engaged whenever the pressure washer is not in use.

LOW-OIL SHUTDOWN

Some engines are equipped with low-oil shutdown. If the engine oil level becomes lower than required, the pressure washer will automatically shut off. (Refer to the engine manual for this feature). This protects your pressure washer engine from operating without proper lubrication.

If the pressure washer engine shuts off and the oil level is according to specification, check to see if the pressure washer is sitting at an angle that forces oil to shift. Place on an even surface to correct this. If the engine fails to start, the oil level may not be sufficient to deactivate low oil level switch. Be sure the pump is completely full of oil.



CAUTION



The pump will overheat and may be damaged, or cause damage if allowed to circulate more than five minutes.

BEFORE OPERATION

NOTE: The engine and pump on your pressure washer will often have improved performance after a break-in period of several hours.

PRE-START PREPARATION

Before starting the pressure washer, check for loose or missing parts and for any damage which may have occurred during shipment.

ASSEMBLY & START-UP

HOSE AND GUN ASSEMBLY

NOTE: Align threaded connections carefully to prevent damaging threads during assembly. Tighten connections securely to prevent leaks during operation.

Attach the hose to the inlet of the trigger gun.

LUBRICATION

DO NOT attempt to start the pressure washer engine without filling the engine crank case with the proper amount and type of oil. (See the accompanying engine manual for this information.) Your pressure washer engine has been shipped from the factory without oil in the engine crankcase.

Operating the unit without oil will ruin the engine.

The pump has been shipped with oil. Before operating the pressure washer check the oil level of the pump to make sure the oil level is to pump's manufacturers required level. Use oil that is recommended from the pump's manufacturer. **DO NOT OVERFILL!**

FUEL

Fill the tank with clean, fresh unleaded automotive gasoline. Regular grade gasoline may be used provided a high octane rating is obtained (at least 85 pump octane).

⚠ WARNING



Gasoline is very dangerous. Serious injury may result from fire caused by gasoline engine contracting hot surfaces.

OPERATING CONNECTIONS

HIGH PRESSURE HOSE

Attach the high pressure hose to the pressure washer by pulling back the collar on the quick connect coupling on the hose and pushing it over the coupling half on the pressure washer outlet.

NOTE: **DO NOT** use a high pressure hose from another manufacturer.

WATER CONNECTION

Before connecting to unit, run water through the garden hose (not supplied) to flush out any foreign matter.

Attach garden hose to the pressure washer water inlet.

NOTE: The water supply must provide a minimum of 4 g.p.m. at 20p.s.i. or the pump may be damaged.

OPERATING INSTRUCTIONS

START-UP PROCEDURE

1. Make sure water supply is connected and turned on.
2. Release gun safety if locked.
3. To allow air to escape from the hose, squeeze trigger on the gun until there is a steady flow of water coming from the nozzle.
4. Remove any dirt or foreign matter from the gun outlet and the male connector of the wand.
5. Insert the nozzle wand into the gun wand and tighten the twistfast fitting securely by hand.

⚠ WARNING



If the wand is not securely locked into place, it could be ejected under high pressure when operating the gun, possibly causing injury or damage.

STARTING ENGINE

- 1) Check oil and gas
- 2) Connect hose & turn on water
- 3) Squeeze trigger
- 4) Make sure pressure washer is on the on position
- 5) Set gas lever to open
- 6) Set choke if available & set throttle to fast
- 7) When starting engine, pull cord slowly until resistance is felt, & then pull rapidly to avoid kickback
- 8) If engine starts & fails to continue to run or if increase resistance is felt during starting pull attempts repeat steps 3

CHEMICAL INJECTION

⚠ CAUTION

This pressure washer is intended for use only with liquid car wash detergents, developed specifically for pressure washer and with mild soaps. Only use chemicals compatible with the aluminum and brass parts of the pressure washer. Powdered soaps may clog the injection system. Always use chemicals according to the manufacturer directions. We assume no responsibility for any damages caused by chemicals injected through this pressure washer.

1. Attach injection tube assembly to the siphon injector on the pump.
2. Open a container of chemicals and place next to the unit near the injection tube.
3. Visually inspect strainer at the end of the injection tube to verify that it is not clogged.
4. Insert the injection tube into the container all the way to the bottom.

3000PSI PRESSURE WASHER

MAINTENANCE

5. Remove the high pressure nozzle from the wand and install the black injection nozzle. The solution will automatically mix with the water and discharge through the nozzle.

NOTE: For certain models, if the engine throttle is not in the fast position, the injection of the solution may be decreased or stopped.

CLEANING TECHNIQUES

Cleaning Techniques

When cleaning with the pressure washer, many cleaning tasks can be solved with water alone, but for most tasks, it is advantageous to use a detergent also. A detergent ensures a quick soaking of the dirt allowing the high pressure water to penetrate and remove the dirt more effectively.

APPLICATION OF SOAP OR DEGREASER

1. Apply the solution to a DRY work surface. On a vertical surface, apply horizontally from side to side starting from the bottom to avoid streaking.

NOTE: Wetting the surface first is not recommended, it dilutes the detergent and reduces its cleaning effects.

Avoid working on hot surfaces or in direct sunlight to minimize the chances of the chemical damaging painted surfaces. Damage may occur to painted surface if chemical is allowed to dry on the surface. Hold nozzle far enough away from surface to prevent damage to the surface.

2. Allow chemical to remain on the surface for a short time before rinsing.
3. Rinse with clean water under high pressure. On a vertical surface, first rinse from the bottom up, then rinse from the top down. Hold nozzle 6 to 8 inches from the work surface at a 45° angle using the flat spray as a peeling tool rather than a scrub brush.

APPLICATION OF WAX

1. Immediately after cleaning, apply wax. Place injection tube in container of wax.
2. Apply the wax sparingly in an even layer. Apply to wet surfaces from bottom up for even distribution and to avoid streaking.
3. Remove the suction tube from the wax bottle rinse off the surplus wax.

NOTE: IF SURPLUS WAX IS NOT REMOVED, A HAZY FINISH MAY RESULT.

4. Wipe dry to reduce water spotting.

END OF OPERATION

End of Operation

When you have completed use of the chemical injection system, remove tube from container. Continue to run in low pressure position and inject clean water through the tube and injection system by placing end of tube in a container of clean water. Continue to run until it is thoroughly cleaned.

MAINTENANCE

CONNECTIONS

Connection on pressure washer hoses, gun and spray wand should be cleaned regularly and lubricated with the manufacturer's recommended grease to prevent leakage and damage to the o-rings.

NOZZLE

Clogging of the nozzle causes the pump pressure to be too high and cleaning is immediately required.



WARNING



A nozzle cleaner must only be used when the spray wand is disconnected from the gun or personal injury could occur

1. Separate the wand from the gun.
2. Clear the nozzle with a small rigid piece of wire such as a paper clip.
3. Flush the nozzle backwards with water.
4. Reconnect the wand to the gun.

Restart the pressure washer and depress the trigger on the spray gun. If the nozzle is still plugged or partially plugged, repeat above instructions 1-4.

If the previous procedure does not clear the nozzle, replace with a new nozzle.

WATER SCREEN

The pressure washer is equipped with a water inlet screen to protect the pump. If the screen is not kept clean, it will restrict the flow of water to the pressure washer and may cause damage to the pump. Do not damage the screen while removing or cleaning screen. Any foreign particles entering the pump may damage the pump. Do not operate pressure washer without the screen in place.

Remove the screen and backflush to remove impurities from screen. Replace immediately.

3000PSI PRESSURE WASHER

MAINTENANCE

ENGINE MAINTENANCE

During the winter months, rare atmospheric conditions may develop which will cause an icing condition in the carburetor. If this develops, the engine may run rough, lose power and may stall. This temporary condition can be overcome by deflecting some of the hot air from the engine over the carburetor area.

NOTE: Refer to the engine manufacturer's manual for service and maintenance of the engine.

STORAGE

PUMP STORAGE

If you must store your pressure washer in a location where the temperature is below 32°F, you can minimize the chance of damage to your machine by utilizing the following procedure:

1. Shut off water supply and relieve pressure in the spray gun by depressing the trigger. Disconnect the garden hose from the pressure washer, but leave the high pressure hose connected.
2. Tip the unit on its side with the inlet connection pointing up.
3. Insert a small funnel (to prevent spilling) into the inlet and pour in approximately 1/4 cup of RV antifreeze.
4. Disconnect spark plug wire.
5. Without connecting garden hose pull the recoil several times to circulate the antifreeze in the pump system.
6. Disconnect spark plug wire.



CAUTION

Prior to restarting, thaw out any possible ice from the pressure washer hoses, spray gun and wand.

Another method of reducing risks of freeze damage is to drain your pressure washer as follows:

1. Stop the pressure washer and detach supply hose and high pressure hose. Squeeze the trigger of the discharge gun to drain all water from the wand and hose.
2. Restart the pressure washer and let it run briefly (about 5 seconds) until water no longer discharge from the high pressure outlet.

ENGINE STORAGE

When the pressure washer is not being operated or is being stored more than one month, follow these instructions:

1. Replenish engine oil to upper level.

2. Drain gasoline from fuel tank, fuel line, fuel valve and carburetor.
3. Pour about one teaspoon of engine oil through the spark plug hole, pull the recoil starter slowly until you feel increased pressure which indicates the piston is on its compression stroke and leave it in that position. This closes both the intake and exhaust valves to prevent the inside of the cylinder from rusting.
4. Cover the pressure washer and store in a clean, dry place that is well ventilated away from open flame or sparks.

NOTE: The use of a fuel additive, such as STA-BIL, or an equivalent, will minimize the formulation of fuel gum deposits during storage. Such an additive may be added to the gasoline in the fuel tank of the engine, or to the gasoline in a storage container.

TECHNICAL SPECIFICATION

Maximum Inlet Pressure.....	Up to 90PSI
RPM.....	3450RPM
Temperature of Pumped Fluids.....	Up to 80 F
Inlet Ports.....	(2) 1/2" BSP
Discharge Ports.....	(2) 1/2" BSP
Weight.....	20 lbs.
Pump oil.....	4.7 fl.oz.
Pump oil.....	SAE 30W Nondetergent

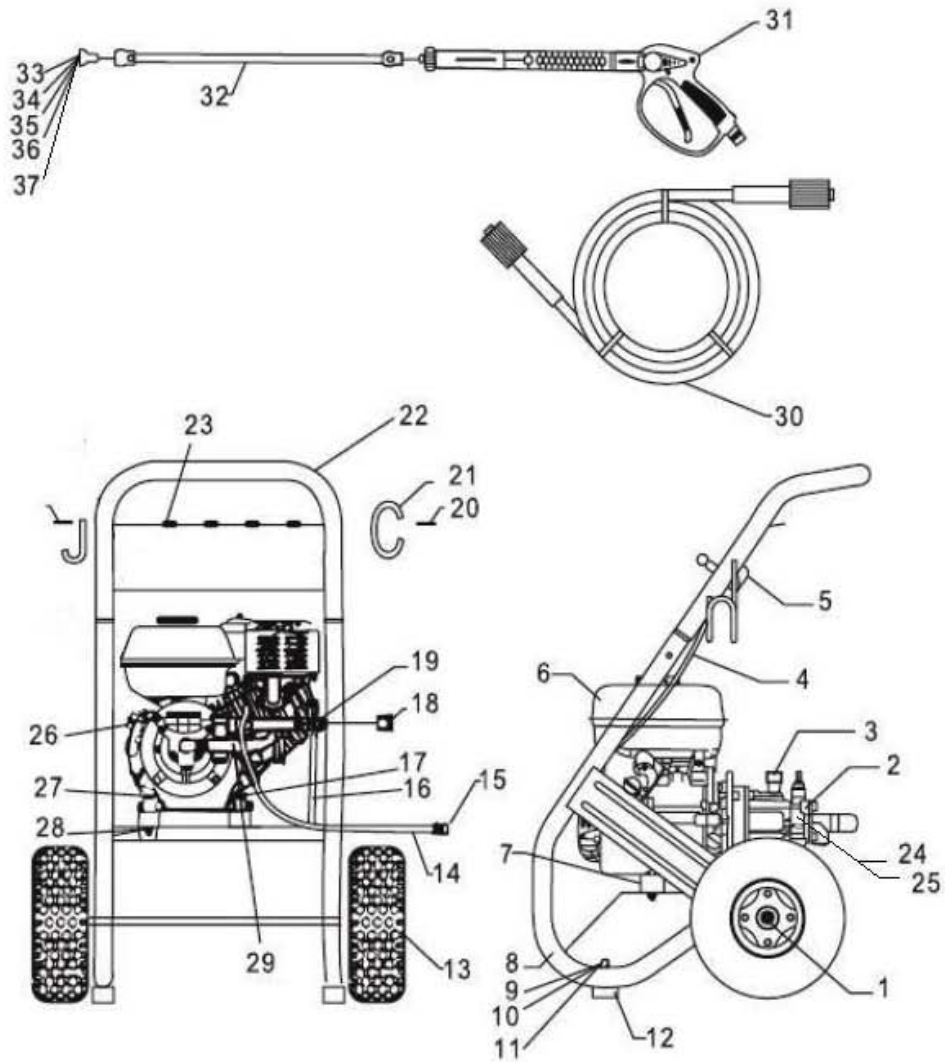
Consult the factory for special requirements that must be met if the pump is to operate beyond one or more of the limits specified above.

3000PSI PRESSURE WASHER

TROUBLE SHOOTING

PROBLEM	PROBLEM CAUSE	CORRECTION
Engine will not start or stops while operating.	Low-oil shutdown	Fill engine with oil
	Engine switch not in "ON" position	Turn switch "ON"
	Pressure built up in the hose	Squeeze trigger while starting
Engine is overloaded	Nozzle partially blocked	Clean nozzle
	Excessive pressure	Shorten the spring coil of the reflux valve
Pressure increases when gun is closed	Bypass valve blocking	Clean the bypass valve
Engine is running but pump won't build maximum pressure or has irregular pressure	Faucet closed	Open faucet
	Unit has been stored in freezing temperatures.	Thaw out unit completely including hose, gun and wand.
	Inadequate water supply	Provide a minimum of 4 gpm at 20psi
	Water inlet screen clogged	Clean screen
	Kink in garden hose	Straighten garden hose
	Wand nozzle worn or damaged	Replace nozzle
	Air in pump	Let it run with gun open and wand removed until steady stream of water is released.
	Adjustable pressure knob not set to maximum position	Set to maximum position
	Suction or discharge valves clogged or worn out	Clean the suction or discharge valves
	Bypass valve not operating effectively	Clean the bypass valve
No intake of chemicals	Injection tube not securely inserted into unit	Push firmly into injector
	Tube cracked or split	Replace tube
	Wrong nozzle	Switch to low pressure nozzle
	Injector turned off	Turn collar counter clockwise
	The axle of the inner aperture of the threeway cock is different	Use a threeway cock with the imbibition function
	Injection tube strainer clogged	Clean strainer
	Nozzle blocked	Clean nozzle
	Dried chemicals injector	Dissolve by running warm water
Trigger will not move	Gun safety lock engaged	Release safety lock
	High humidity	Change oil more frequently
Water in crankcase	Worn seals	Change the oil seals
	Worn bearings	Change the bearing
Noisy operation	Air mixed with water	Check inlet lines for restrictions and/or proper sizing
	Inlet restriction	Check system for stoppages, air leaks, correctly sized inlet plumbing to pump
Rough/pulsating operating with pressure drop	Unloader	Check unloader for proper operation
	Air mixed in water	Check inlet lines for restrictions and/or proper sizing
	Wrong grade of oil	Use recommended oil
High crankcase temperatures	Improper amount of oil in crankcase	Adjust oil level to proper amount

APW5102 PARTS LIST



Part Number	Description	NOTE
APW5102-G-1	Hub cap	
APW5102-G-2	Pump assembly	
APW5102-G-3	Inlet cover	
APW5102-G-4	Accelerator wire drawing	

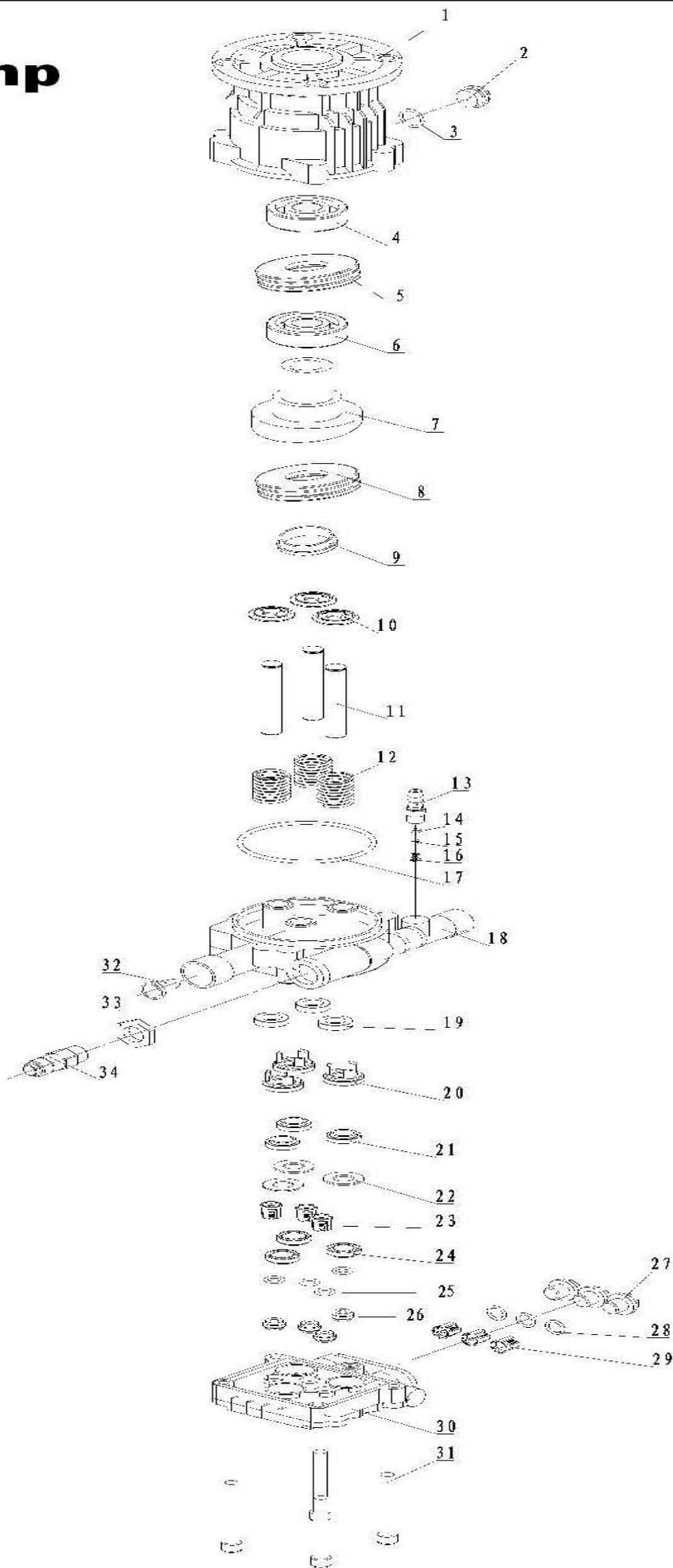
3000PSI PRESSURE WASHER

Part Number	Description	NOTE
APW5102-G-5	Component of accelerator control level	
APW5102-G-6	Engine	
APW5102-G-7	Isolator	
APW5102-G-8	Carriage	
APW5102-G-9	Nut	
APW5102-G-10	Plant	
APW5102-G-11	Bolt	
APW5102-G-12	Rubber foot	
APW5102-G-13	Wheel	
APW5102-G-14	Chemical hose	
APW5102-G-15	Chemical filter	
APW5102-G-16	Whiz bolt	
APW5102-G-17	Hose adapter	
APW5102-G-18	Nut	
APW5102-G-19	Nut lock	
APW5101-G-20	Screw	
APW5102-G-21	Vinyl cap	
APW5102-G-22	Handle	
APW5102-G-23	Grommet	

Part Number	Description	NOTE
APW5102-G-24	Thermal Relief Valve	
APW5102-G-25	Thermal Relief Cap	
APW5102-G-26	Oil fill pump cap	
APW5102-G-27	Bolt	
APW5102-G-28	Nut	
APW5102-G-29	Whip Hose	
APW5101-G-30	Hose	
APW5101-G-31	Gun assy.	
APW5102-G-32	Assy. Wand & quick connect	
APW5102-G-33	Nozzle black	INCLUDED IN ASSEMBLY APW5102-G-33-37
APW5102-G-34	Nozzle red	INCLUDED IN ASSEMBLY APW5102-G-33-37
APW5102-G-35	Nozzle yellow	INCLUDED IN ASSEMBLY APW5102-G-33-37
APW5102-G-36	Nozzle green	INCLUDED IN ASSEMBLY APW5102-G-33-37
APW5102-G-37	Nozzle white	INCLUDED IN ASSEMBLY APW5102-G-33-37

- All repairs and part replacement should be performed by a qualified technician or service center. Some parts may not be available as single replacement.

pump



PART NUMBER	DESCRIPTION	NOTE
APW5102-P-1	Connection Base	
APW5102-P-2	Hexangular Bolt	
APW5102-P-3	O-ring	
APW5102-P-4	Frame Oil Seal	
APW5102-P-5	Thrust Bearing	
APW5102-P-6	Bearing	
APW5102-P-7	Short Shaft	
APW5102-P-8	Thrust Bearing	
APW5102-P-9	Eccentric Bowl	
APW5102-P-10	Plunger Wedge	
APW5102-P-11	Plunger	
APW5102-P-12	Plunger Spring	
APW5102-P-13	Soap Input	
APW5102-P-14	O-ring	
APW5102-P-15	Steel Ball	
APW5102-P-16	Plunger Spring	
APW5102-P-17	O-ring	
APW5102-P-18	Pump Body	
APW5102-P-19	Oil Seal	
APW5102-P-20	Tripod plunger frame	
APW5102-P-21	Gasket	

3000PSI PRESSURE WASHER

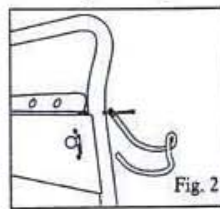
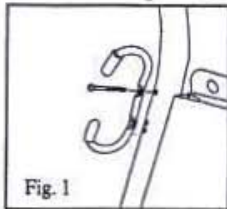
PART NUMBER	DESCRIPTION	NOTE
APW5102-P-22	Gasket	
APW5102-P-23	Inlet valve	
APW5102-P-24	Water Seals	
APW5102-P-25	O-ring	
APW5102-P-26	Valve Cap	
APW5102-P-27	Bridge Pipe	
APW5102-P-28	O-ring	
APW5102-P-29	One-Way Valve	
APW5102-P-30	Pump Cover	
APW5102-P-31	Hexangular Bolt	
APW5102-P-32	Inlet Filter	
APW5102-P-33	Bridge Pipe	
APW5102-P-34	Overheat Protection	
APW5102-E-06	Recoil Stater Grip	
APW5102-E-05	Spark Plug	

- The last two digitals of the Part Number refer to the reference number in the picture.
- The last two parts which are APW5102-E-06 and APW5102-E-05 are the only offered parts of the engine.
- All repairs and part replacement should be performed by a qualified technician or service center. Some parts may not be available as single replacement.

INSTALLATION

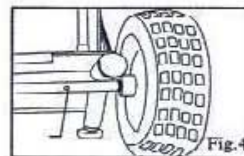
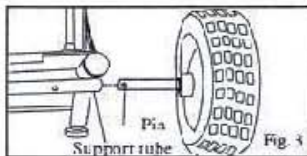
Assembly

1. Installing the right and left hooks
 - a) Install the left hook using the bolts, nuts, and washers supplied (see Figure 1)
 - b. Install the right hook using the bolts, nuts, and washers supplied (see Figure 2)



2. Installing the wheels

- 1) Hold the locating pin in the wheel set backward in horizontal level and press the locating pin into supporting tube until the click is heard, which indicates the pin clutches at the supporting tube (see Fig. 3).
- 2) Until the pin is higher than the thickness of supporting wall (see Fig. 4).



START-UP PROCEDURE

PRE-START PREPARATION

Before starting the pressure washer, check for loose or missing parts and for any damage which may have occurred during shipment.

PUMP PREPARATION

The pump is shipped with a shipping plug, this will need to be replaced with the vent plug that is supplied.

START-UP PROCEDURE

1. Make sure water supply is connected and turned on.
2. Release gun safety if locked.
3. To allow air to escape from the hose, squeeze trigger on the gun until there is a steady flow of water coming from the nozzle.
4. Remove any dirt or foreign matter from the gun outlet and the male connector of the wand.
5. Insert the nozzle wand into the gun wand and tighten the fitting securely.
6. Place the throttle in the HI position.

STARTING ENGINE

- 1) Check oil and gas
- 2) Connect hose & turn on water
- 3) Squeeze trigger
- 4) Make sure pressure washer is on the on position
- 5) Set gas lever to open
- 6) Set choke if available & set throttle to fast
- 7) When starting engine, pull cord slowly until resistance is felt, & then pull rapidly to avoid kickback
- 8) If engine starts & fails to continue to run or if increase resistance is felt during starting pull attempts repeat steps 3

SPRAY NOZZLE SELECTION

Following information concerning the four nozzles provided with your pressure washer. (If four nozzles are provided.)

NOTE: The force of the spray on the surface you are cleaning increases as you move closer to the surface.

0°: High Pressure (Red) : The water stream discharged is very aggressive. Use with extreme caution to prevent damage to the surface being cleaned or injury to persons or animals.

15°: High Pressure (Yellow): This is the nozzle used for most cleaning applications. It provides wide coverage and a powerful water stream.

25°: High Pressure (Green) : This is the nozzle used for most cleaning applications. It provides wide coverage and a powerful water stream.

45°: High Pressure (White): This is the nozzle used for cleaning with a wider coverage over a larger area with a powerful water stream.

Soap: Low Pressure (Black): Provides lower pressure spray for a wider coverage. Used primarily when operating the chemical injector to apply chemicals.

Limited Warranty

All-Power America warrants to the original purchaser who uses the product in a consumer application (personal, residential or household usage) that all products covered under this warranty are free from defects in material and workmanship for one year from the date of purchase. All products covered by this limited warranty which are used in commercial applications (i.e. income producing) are warranted to be free of defects in material and workmanship for 90 days from the date of original purchase. Products covered under this warranty include air compressors, air tools, service parts, pressure washers, and generators.

All-Power America will repair or replace, at All-Power America's sole option, products or components which have failed within the warranty period. Service will be scheduled according to the normal work flow and business hours at the service center location, and the availability of replacement parts. All decisions of All-Power America with regard to this limited warranty shall be final.

This warranty gives you specific legal rights, and you may also have other rights which vary from state to state.

RESPONSIBILITY OF ORIGINAL PURCHASER (initial User):

- To process a warranty claim on this product, DO NOT return item to the retailer. The product must be evaluated by an Authorized Warranty Service Center. For the location of the nearest Authorized Warranty Service Center contact the retailer or place of purchase.
- Retain original cash register sales receipt as proof of purchase for warranty work.
- Use reasonable care in the operation and maintenance of the product as described in the Owners Manual(s).
- Deliver or ship the product to the nearest Authorized Warranty Service Center. Freight costs, if any, must be paid by the purchaser.
- If the purchaser does not receive satisfactory results from the Authorized Warranty Service Center, the purchaser should contact All-Power America.

Limited Warranty (cont'd)

THIS WARRANTY DOES NOT COVER:

- Merchandise sold as reconditioned, used as rental equipment, or floor or display models.
- Merchandise that has become damaged or inoperative because of ordinary wear, misuse, cold, heat, rain, excessive humidity, freeze damage, use of improper chemicals, negligence, accident, failure to operate the product in accordance with the instructions provided in the Owners Manual(s) supplied with the product, improper maintenance, the use of accessories or attachments not recommended by All-Power America, or unauthorized repair or alterations.
- Repair and transportation costs of merchandise determined not to be defective.
- Costs associated with assembly, required oil, adjustments or other installation and start-up costs.
- Expendable parts or accessories supplied with the product which are expected to become inoperative or unusable after a reasonable period of use.
- Merchandise sold by All-Power America which has been manufactured by and identified as the product of another company, such as gasoline engines. The product manufacturer's warranty, if any, will apply.
- ANY INCIDENTAL, INDIRECT OR CONSEQUENTIAL LOSS, DAMAGE, OR EXPENSE THAT MAY RESULT FROM ANY DEFECTS, FAILURE OR MALFUNCTION OF THE PRODUCT IS NOT COVERED BY THIS WARRANTY. Some states do not allow the exclusion, so it may not apply to you.
- IMPLIED WARRANTIES, INCLUDING THOSE OF MERCHANTABILITY OR FITNESS FOR A PARTICULAR PURPOSE, ARE LIMITED TO ONE YEAR FROM THE DATE OF ORIGINAL PURCHASE. Some states do not allow limitations on how long an implied warranty lasts, so the above limitations may not apply to you.

All-Power America

16273 E. Gale Ave.

City Of Industry, CA 91745

626.855.0840

www.allpoweramerica.com

all rights reserved
