



Illustrated Parts List

Pressure Washer / Lavadora de Presión
Model / Modelo 020293-1



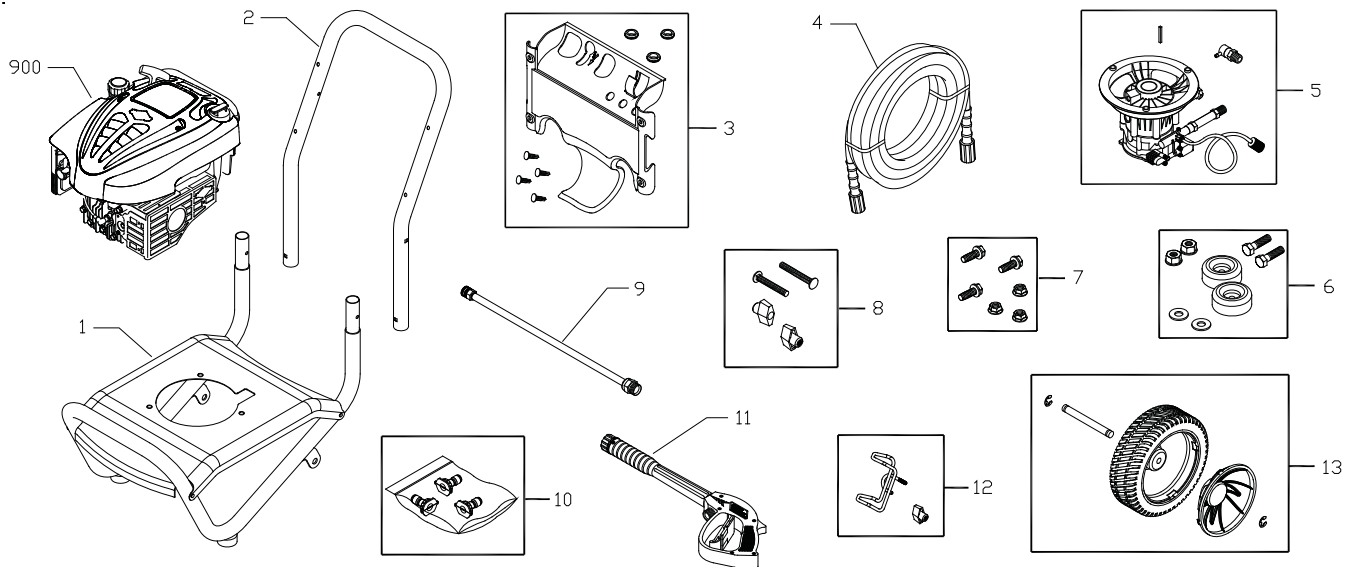
Questions? Preguntas?
Helpline - 1-888-611-6708 M-F 8-5 CT

Troy-Bilt® is a registered trademark of MTD Products Inc and is used under license to Briggs & Stratton Power Products.
Troy-Bilt® es una marca registrada de MTD y se usa abajo licencia a Briggs & Stratton Power Products

Briggs & Stratton Power Products Group, LLC
Jefferson, Wisconsin, U.S.A.

Exploded Views and Parts List

EXPLODED VIEW AND PARTS LIST — MAIN UNIT



| Item | Part # | Description |
|------|------------|----------------------------------|
| 1 | 201560GS | ASSY, Base |
| 2 | P199110GS | HANDLE |
| 3 | 201371GS | ASSY, Billboard w/Decals & Clips |
| | 195964GS | Clips, Tree |
| | 30809GS | Grommet |
| 4 | 196006GS | HOSE, 25' |
| 5 | 202605GS | ASSY, Pump |
| | 194298GS | Valve, Thermal Relief |
| | 23139GS | Key |
| 6 | 192310GS | KIT, Vibration Mount |
| 7 | 192529GS | KIT, Pump Mounting Hardware |
| 8 | B2203GS | KIT, Handle Connector |
| 9 | 200595GS | EXTENSION |
| 10 | 201324GS | KIT, Nozzles |
| | 198841GS | Nozzle, Plastic, Soap |
| | 195983AEGS | Nozzle, QC, Red |
| | 195983QGS | Nozzle, QC, Grn |
| 11 | 193482GS | GUN |
| 12 | 201661GS | KIT, Gun Holder |

| Item | Part # | Description |
|------|----------|-------------|
| 13 | 201394GS | KIT, Wheel |
| | 201313GS | Axle |
| | 200519GS | Hubcap |
| | 192050GS | E-Ring |
| 900 | NSP | ENGINE |

Parts Not Illustrated

| | |
|-----------|--------------------------|
| 203777GS | MANUAL, Operator's |
| 194256GS | KIT, Tag/Warning Service |
| 699869 | COVER, Shroud/Label Assy |
| 201331GS | DECAL, 6.75HP |
| 790245 | CAP, Tank Assy |
| BB3061BGS | OIL BOTTLE |
| 87815GS | GOGGLES |

Optional Accessories

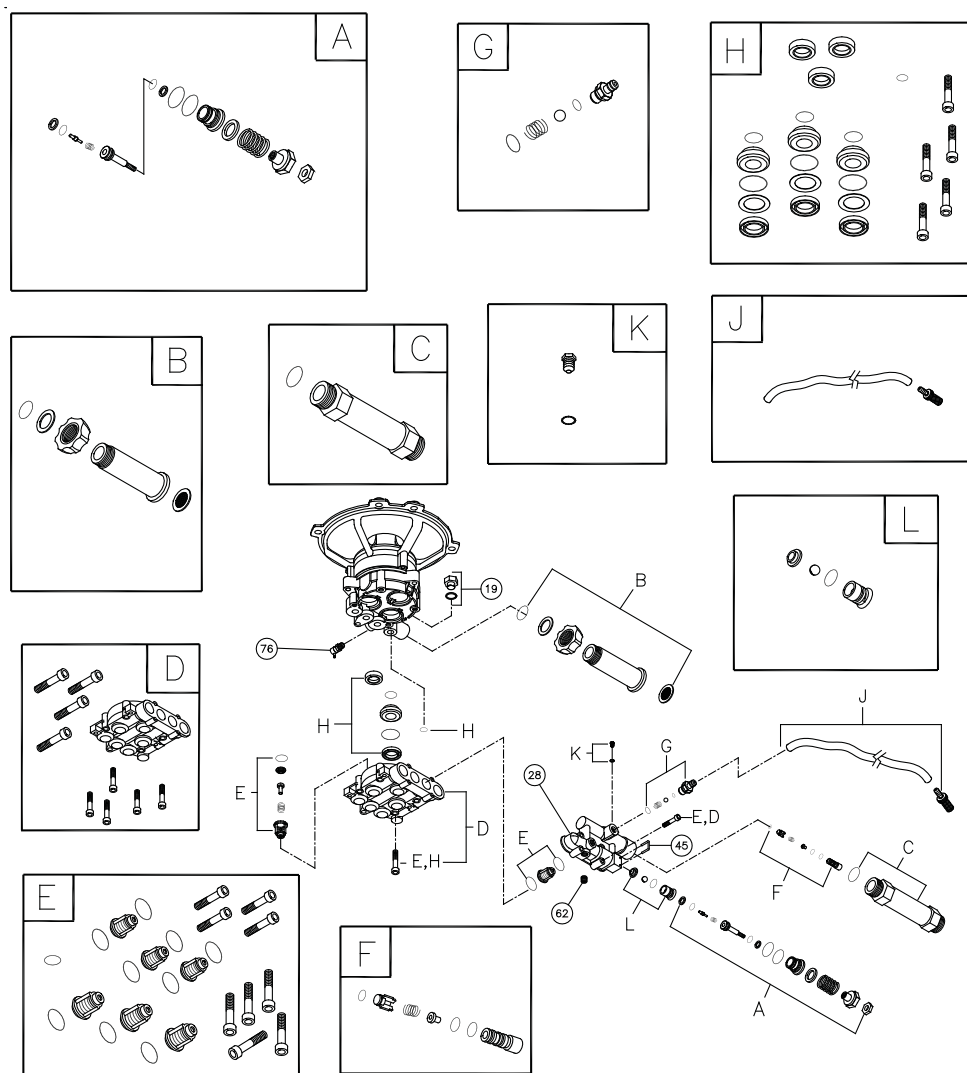
| | |
|------|-------------|
| 6048 | KIT, O-Ring |
| 6039 | PUMP SAVER |

§ - Contact Engine Manufacturer

Copyright © 2009 Briggs & Stratton Power Products Group, LLC. All rights reserved. No part of this material may be reproduced or transmitted in any form without the express written permission of Briggs & Stratton Power Products Group, LLC.

Exploded Views and Parts List

EXPLODED VIEW AND PARTS LIST — PUMP



| Item | Part # | Description |
|------|----------|-------------------------|
| 19 | 190571GS | CAP, Oil |
| 28 | 190627GS | MANIFOLD |
| 45 | 190578GS | PIN |
| 62 | 190581GS | CAP, 1/8 |
| 76 | 194298GS | THERMO RELIEF |
| A | 190594GS | KIT, UNLOADER STEM |
| B | 190632GS | KIT, WATER INLET, ALUM |
| C | 190634GS | KIT, OUTLET, ALUMINIUM |
| D | 203631GS | KIT, HEAD ALUMINIUM |
| E | 193806GS | KIT,CHECK VALVES |
| F | 190592GS | KIT, INLET CHECK |
| G | 190593GS | KIT, CHEMICAL INJECTION |

| Item | Part # | Description |
|------|----------|--------------------|
| H | 193807GS | KIT, SEAL SET |
| J | 189971GS | KIT, CHEMICAL HOSE |
| K | 193971GS | KIT, PIPE FITTING |
| L | 193972GS | KIT, UNLOADER SEAT |

Parts Not Illustrated
 B2384GS FILTER, Inlet

NOTE: Item letters A - L are service kits and include all parts shown within the box.